

SOLAR FIRE



SIZE: 53" H X 42" W | LEVEL: CONFIDENT BEGINNER | DESIGNED BY MARINDA STEWART

FABRIC REQUIREMENTS

46" X 60" BACKING AND BATTING



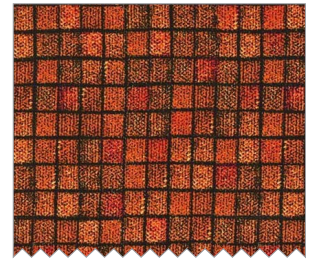
K1082 (Grey)
Krystal
1" x 2" Piece



Jet Black
7/8 Yard



CM0376 Hollyberry
Fairy Frost
Fat 1/4



CJ6818 Orange
Textured Tiles
1/4 Yard



CJ6817 Fire
Pixel Plaid
1/4 Yard



CJ6822 Orange
Blurred Lines
1/4 Yard



CX6699 Papaya
Hashdot
1/4 Yard



K1142 (Orange)
Krystal
Fat 1/8



CJ4816 Yellow
Painter's Canvas
6" Square



CX1087 Parchment
Marble
7" Square



CX6992 Black
Flames
7/8 Yard

SELVAGE TO SELVAGE 43 INCHES



K1024 (Gold)
Krystal
3" x 8" Piece



CG0376 Glow
Fairy Frost
5" x 10" Piece



CX6699 Pistachio
Hash Dot
4" x 5" Piece



CM0376 Twilight
Fairy Frost
3" x 6" Piece



CM0376 Garland
Fairy Frost
3" x 10" Piece



CJ4816 Orange
Painter's Canvas
Fat 1/8

Solar Fire

Quilt by Marinda Stewart

Size: 42" W x 53"H

Skill Level: Confident Beginner

Fabrics	Yardage	Cutting
CX6992 Black Flames	7/8 yard	(1) 28 ½" x 40 ½" * (5) 2 ½" x W.O.F. – binding (96) 2" square (16) 1 ½" square (8) 1 ½" x 6 ½" (16) 1 ½" x 2 ½" (8) 1 ½" x 4 ½"
Jet Black	7/8 yard	(2) 1 ½" x 40 ½" (2) 1 ½" x 30 ½"
CM0376 Holly Berry Fairy Frost	1/4 yard	(24) 2 ½" x 6 ½"
CJ6818 Orange Textured Tiles	1/4 yard	(24) 2 ½" x 6 ½"
CJ6817 Fire Pixel Plaid	1/4 yard	(24) 2 ½" x 6 ½"
CJ6822 Orange Blurred Lines	1/4 yard	(24) 2 ½" x 6 ½"
CX6699 Papaya Hash Dot	1/4 yard	(24) 2 ½" x 6 ½"
CJ4816 Orange Painters Canvas	Fat 1/8	(16) 1 ½" squares
K1142 (Orange) Krystal	Fat 1/8	(16) 1 ½" squares
CJ4816 Yellow Painters Canvas	6" square	(4) 2 ½" squares
CX1087 Parchment Marble	7" square	(1) 6" circle **
CM0376 Garland Fairy Frost	3" x 10" piece	(1) outer planet ring **
K1024 (Gold) Krystal	3" x 8" piece	(1) inner planet ring **
CG0376 Glow Fairy Frost	5" x 10" piece	(2) large stars (5) medium stars (6) small stars **
CX6699 Pistachio	4" x 5" piece	(1) 3" planet

Hash Dot		(1) 1" planet **
CM0376 Twilight Fairy Frost	3" x 6" piece	(1) 1 ¼" planet (1) 1 ½" planet (1) 2 ½" planet **
K1082 (Grey) Krystal	1" x 2" piece	(2) moons **

Also Needed: 46" x 60" backing, 46" x 60" batting, scissors, straight pins, acrylic ruler, rotary cutter, mat, threads to match - (optional: metallic silver and gold for applique), and fusible web.

OPTIONAL: (but recommended) iron-on tear-away stabilizer.

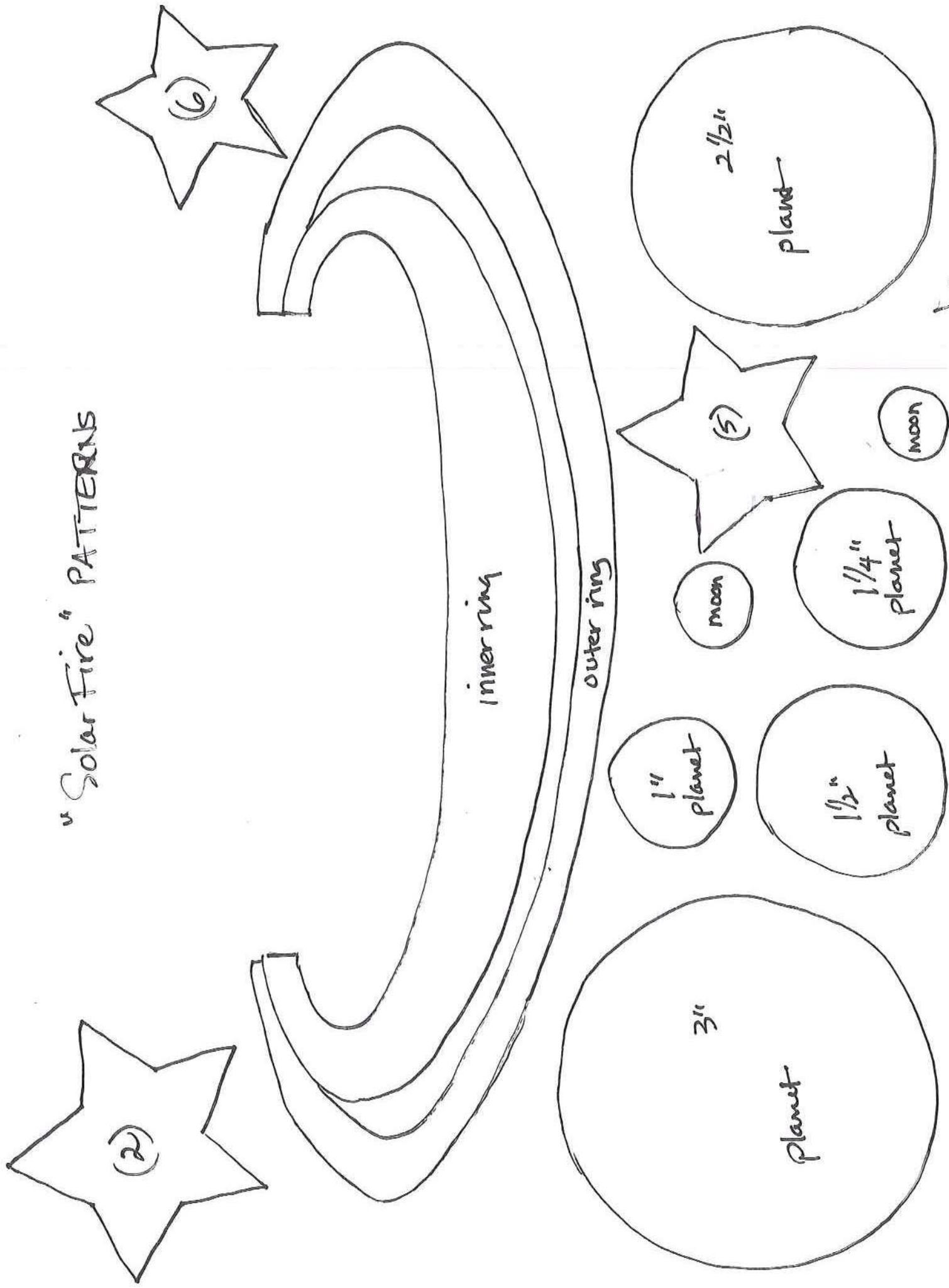
* Cut with as much black area as possible. Trim excess from red side of selvedge.

** See patterns

- Trace patterns onto paper side of the fusible web. Rough cut out. Iron pattern pieces onto the wrong side of the designated fabrics following manufacturer's directions. Cut out on pattern lines. Remove paper backing. Iron planets, moons, and stars in place as shown or as desired. Machine applique all raw edges to finish. NOTE: Metallic gold thread was used for the planet rings and metallic silver thread was used for all the grey planets and moons. OPTIONAL: (but recommended) Iron iron-on tear-away stabilizer on the wrong side of the quilt panel behind each star, moon, and planet before stitching. Stitch. Remove all traces of the stabilizer after stitching. Stabilizer improves stitch quality and eliminates distortion.
- Sew one CM0376 Holly Berry 1 ½" x 40 ½" piece to each side. Sew one CM0376 Holly Berry 1 ½" x 30 ½" piece to the top and bottom.
- For pickets: Place one Jet Black 2" square right sides together on top of one CJ6818 2" x 6 ½" piece. Sew diagonally across the right corner from corner to corner of the black square. Make (24) total. Repeat using CJ6817. Make (24) total. Repeat using CX6699 Papaya and CJ6822 2" x 6 ½" pieces changing the direction to sew across the left corner of each strip. Press black triangle upward. Trim excess fabric from the back of each picket.
- Sew pickets together in pairs of (1) CJ6818 and (1) CX6699 Papaya and CJ6817 and CJ6822. Make (48) pairs total – (24) of each combination. Sew together (5) of each combo in a 10 pair row. Alternate combinations. Make (2) rows. Sew one to the top and bottom of the quilt. Make (2) 14-pair rows for the sides. Set aside.

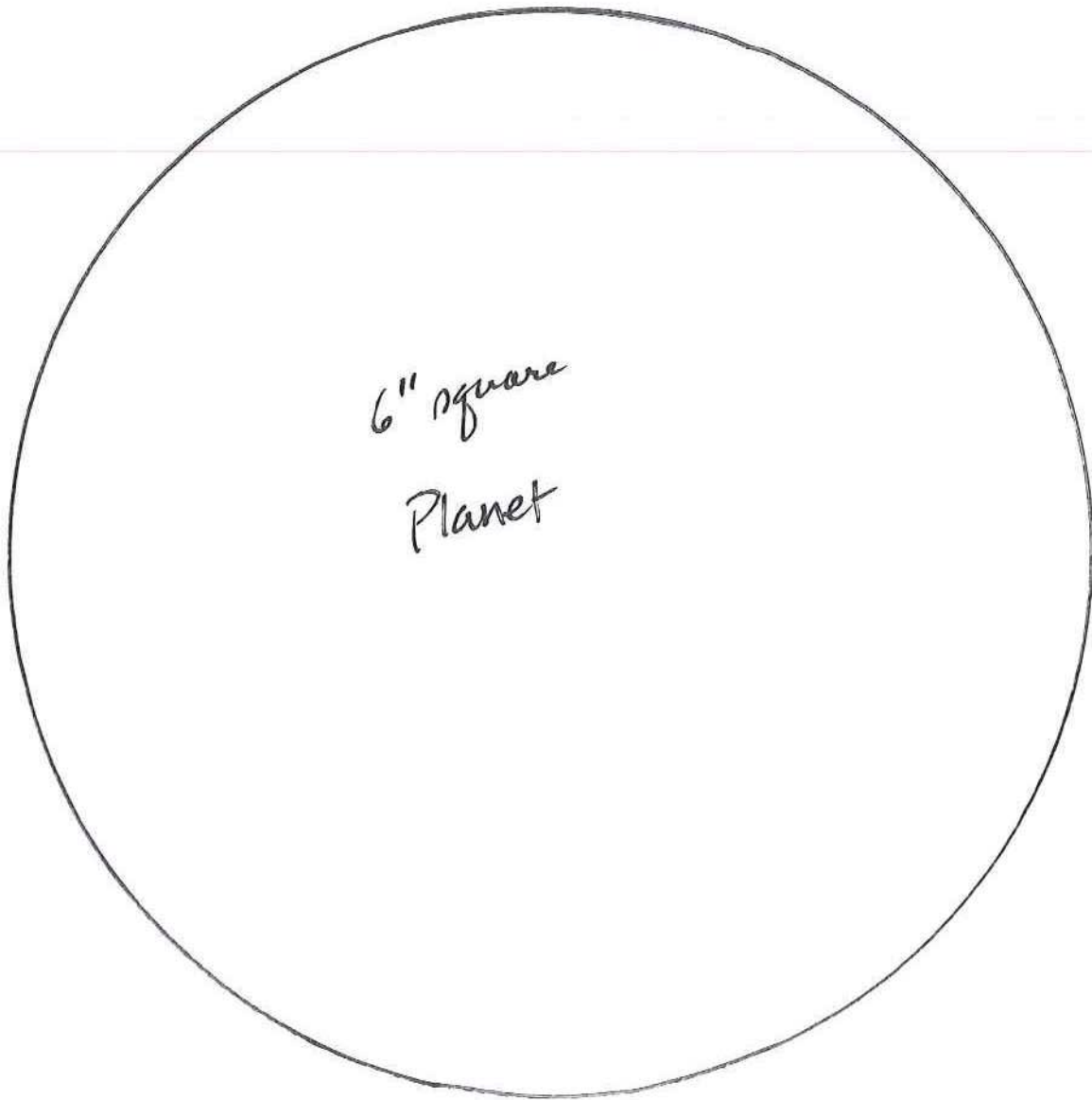
5. For the cornerstone star blocks – sew one CJ4816 Orange 1 ½” square diagonally across the left corner as in step #3 and one 1 ½” K1142 on the right corner as shown. Press. Trim excess from the back. Make (4). Sew one to the top and bottom of one CJ4816 Yellow 2 ½” square. Sew one Jet Black 1 ½” square to each end of each remaining unit. Sew to each side of the CJ4816 Yellow block as shown. Make (4) total.
6. Sew one Jet Black 1 ½” x 4 ½” piece to the top and bottom of the star block. Sew one Jet Black 1 ½” x 6 ½” to each side. Sew one block to each end of the (14) pair rows. Sew completed strip to each side of the quilt.
7. Layer backing, batting, and quilt top. Baste.
8. Quilt as desired.
9. Bind quilt using Jet Black 2 ½” strips, pieced as needed for length.

"Solar Fire" PATTERNS



Marinda ©2015

"Solar Fire" PATTERNS



*Marinda © 2015