

THIS END UP



SIZE: 44" x 48" | QUILT DESIGNED BY GIUSEPPE RIBAUDO

FABRIC REQUIREMENTS

BACKING: 2 Yards

Binding: 1/2 Yard



MC6886 Coin

Plucked

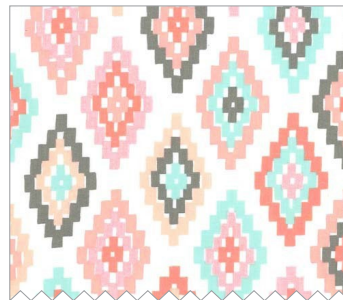
3/4 yard



MC6987 Blush

Offline

1 1/3 yards



PC6988 Blush

Cornered

Fat 1/4 + 1/2 yard-binding



MC6990 Grape

Arrows

Fat 1/4



MC6990 Blush

Arrows

Fat 1/4



MC6990 Coin

Arrows

Fat 1/4



MC6990 Luna

Arrows

Fat 1/4



MC6990 Bright White

Arrows

Fat 1/4



SC5333 Blush

Cotton Couture

Fat 1/4



SC5333 Grape

Cotton Couture

Fat 1/4



SC5333 Bright White

Cotton Couture

Fat 1/4



SC5333 Luna

Cotton Couture

Fat 1/4

This End Up
Quilt by Giuseppe Ribaud
Size: 44" x 48"
Backing: 2 yards
Binding: ½ yard

MC6988 Blush Cornered	Fat 1/4 + ½ yard for binding
MC6987 Blush Offline	1 ⅓ yard
MC6986 Coin Plucked	¾ yard
MC6990 Grape Arrows	Fat 1/4
MC6990 Blush Arrows	Fat 1/4
MC6990 Coin Arrows	Fat 1/4
MC6990 Luna Arrows	Fat 1/4
MC6990 Bright White Arrows	Fat 1/4
SC5333 Bright White Cotton Couture	Fat 1/4
SC5333 Blush Cotton Couture	Fat 1/4
SC5333 Grape Cotton Couture	Fat 1/4
SC5333 Luna Cotton Couture	Fat 1/4
Your choice for backing	2 yards

Arrow Flight Quilt or This End Up Quilt Instructions

- for -

Cotton Couture by Michael Miller Fabrics

- Quilt Design and Pattern by Giuseppe Ribaudo -

FINISHED QUILT SIZE: 44" x 48"

CUTTING INSTRUCTIONS

- Flying Geese [makes 80 unfinished 2.5" x 4.5" geese, you need 78 for the pattern]
 - Cut 20 5 1/4" pieces for the center part of your geese
 - Cut 80 2 7/8" pieces for the background of your geese
- Background
 - Strips:
 - 2 2 1/2" x 4 1/2" strips
 - 2 2 1/2" x 8 1/2" strips
 - 2 2 1/2" x 12 1/2" strips
 - 2 2 1/2" x 16 1/2" strips
 - 2 2 1/2" x 20 1/2" strips
 - 2 16" x 28" rectangles
- Border
 - 4 2 1/2" x 44" strips

FLYING GEESE

- Take one 5 1/4" piece of the center part of your geese and cut in half diagonally. Without moving the pieces, cut diagonally again in the other direction. This will give you four center geese.
- Take one 2 7/8" pieces of the background of your geese. Cut it in half on the diagonal.
- Take one of your center geese triangles and the two smaller triangles you just cut. Using a scant 1/4", sew the diagonal side of the smaller triangle to one of the diagonal sides of the triangle. Press. Repeat for the other side. Press.
- Repeat for remaining geese.

ARRANGING YOUR ARROW

- Start by laying out the arrow top. The first row consists of 1 goose, the second row has three, the third row has 5, the fourth row has 7, the fifth row has 9, the sixth row has 11. Lay each of the rows out, centering them off the first row goose so they cascade symmetrically on both sides of the arrow top.
- Next add your strips. Arrange them from longest to shortest, top to bottom, on either side of your geese rows. Meaning row 1 with 1 goose gets the 2 2 1/2" x 20 1/2" strips with one on each side of the goose, the second row gets 2 2 1/2" x 16 1/2" strips, so on and so forth.
- For the base of the arrow, arrange 14 rows, 3 geese in each row.

ASSEMBLING YOUR ARROW

- From the bottom, join each of your 14 rows of 3 geese from left to right, pressing as you go. Once all 14 rows are sewn, join the rows from top to bottom. Once your unit is sewn up it will measure 12" across and 28" length-wise.
- Sew each of your 16" x 28" rectangles onto either side of your arrow base, your geese rows in the center. Your piece will measure 44" across and 28" length-wise.

- For the top of the arrow, join each of your rows from left to right, pressing as you go. Once all 6 rows are sewn, join the rows from top to bottom. Once your unit is sewn up it will measure 44" across and 12" length-wise.
- Join the top part with the bottom, the top of the arrow base to the bottom of the arrow. Your piece will measure 44" x 40".
- Add 2 of the 2 1/2" x 44" border strips onto the top and bottom of the quilt (the 44" side). Press seams.
- Add the last 2 2 1/2" x 44" strips onto the sides of the quilt. Press seams.