

SEA HOLLY

From the Sea Holly Collection
By Sarah Campbell - July 2015



michae|miller FABRICS

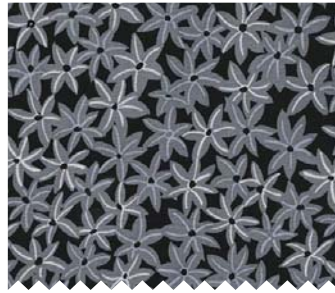
SIZE: 58" W X 58" H | QUILT BY SUSAN EMORY | LEVEL: INTERMEDIATE

© Swirly Girls Design, Inc. Permission is granted to shop owners and teachers to make copies for promotional or educational purposes.
This pattern may not be reproduced for commercial purposes.

FABRIC REQUIREMENTS



DC7085_Teal
Seaside Garden
1 1/2 yards



DC7084_Black
Star Flowers
1 1/4 yards



DC7083_Olive
Meadow Puffs
1/4 yards



DC7083_Gray
Meadow Puffs
1/4 yards



DC7081_Gray
Butterfly Blossoms
1/4 yards



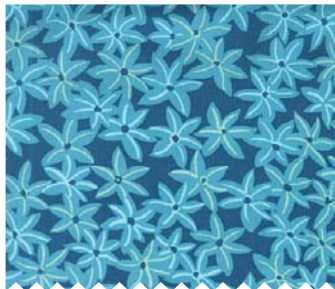
DC7080_Teal
Flutter-by Clouds
1/4 yards



DC7080_Blossom
Flutter-by Clouds
1/4 yards



DC7082_Straw
Little Posies
1/4 yards
(4 yards backing)



DC7084_Teal
Star Flowers
1/4 yards



DC7087_Teal
Tiny Patches
1/4 yards



SC5333_Cream
Cotton Couture
1 1/2 yards

Sea Holly

by Swirly Girls Design

58" x 58"

Cutting:

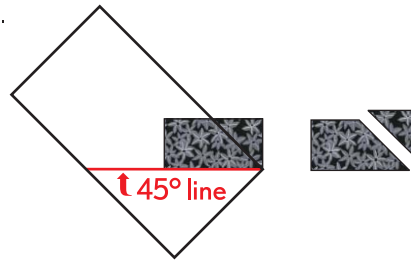
WOF = Width of Fabric

Cut once diagonally = 

Cut twice diagonally = 

DC7084 Black: Cut [4] 3-7/8" x WOF strips; subcut [32] 3-7/8" squares and cut once diagonally

[10] 2-5/8" x WOF strips; subcut [64] 2-5/8" x 5-1/8" rectangles
With fabric Right Side Up, align the 45° line on your ruler with the bottom, right edge of rectangle and trim.



SC5333 Cream: Cut [5] 5-3/8" x WOF strips; subcut [32] 5-3/8" squares and cut once diagonally

[4] 3-7/8" x WOF strips; subcut [32] 3-7/8" squares and cut once diagonally

[2] 2-5/8" x WOF strips; subcut [16] 2-5/8" squares

Each of 8 Prints: Cut [2] 7-1/4" squares and cut twice diagonally

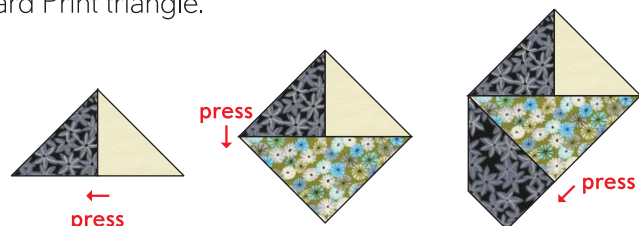
DC7085 Teal: Cut [6] 5-1/2" x WOF strips (borders)

[7] 2-1/2" x WOF strips (binding)

Piecing:

Sew a DC7804 Black triangle to the left side of a small Cream triangle as shown. Press toward Black triangle.
Sew a Print triangle to the bottom of unit and press toward Print triangle.
Sew a trimmed Black rectangle to the unit as shown.
Press toward trimmed Black rectangle.

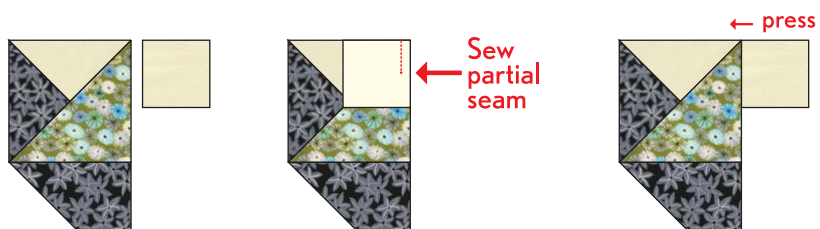
Repeat to make a total of [4] matching units.



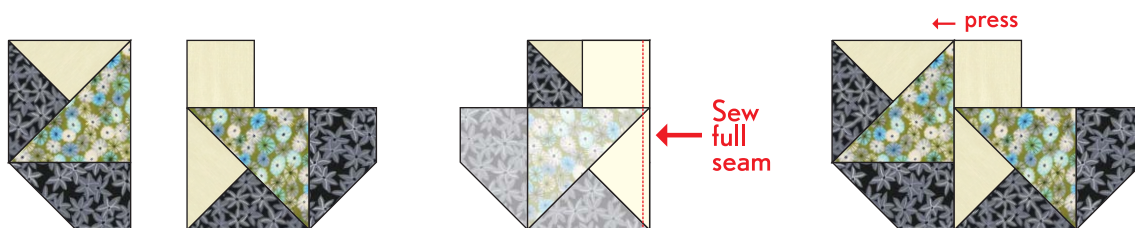
Make 4

Partial Seam Technique:

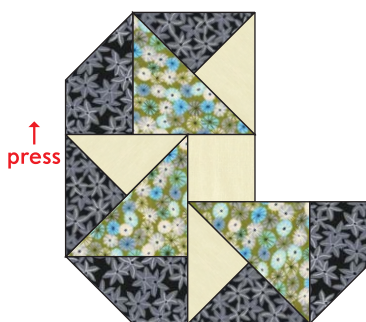
Arrange a pieced unit and a 2-5/8" Cream square as shown. Flip Cream square, rights sides together, onto the pieced unit. Sew a seam approximately 1/2 way down the Cream square. Press toward pieced unit.



Turn center square unit 90° and arrange a second, matching pieced unit on the left side. Sew a full seam along edge, as shown below. Press toward newly-added pieced unit.

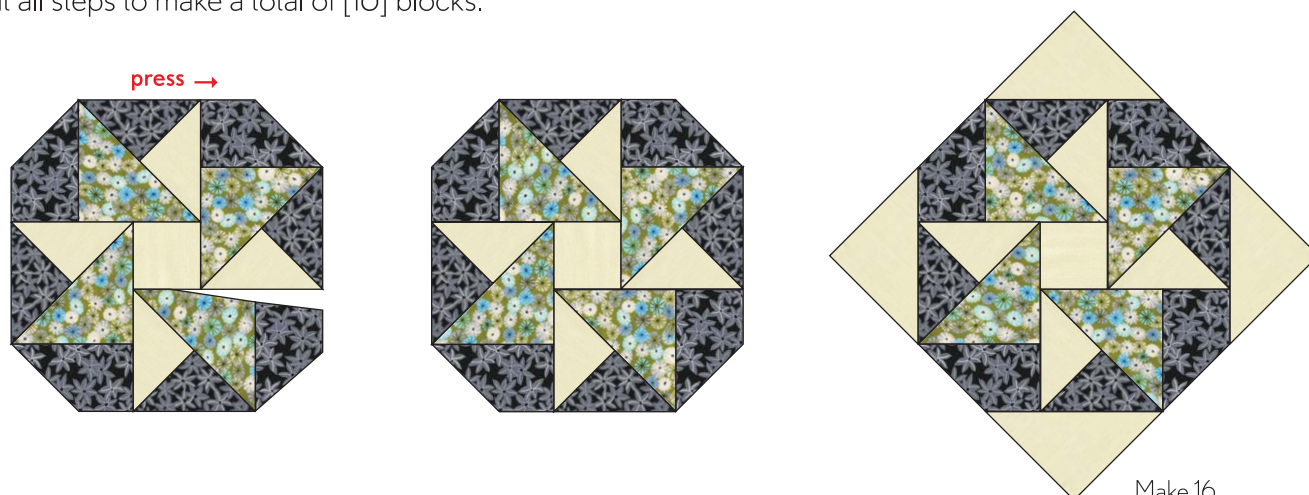


Sew another matching pieced unit to the top edge. Press toward newly-added pieced unit.



With the first partially-sewn, pieced unit out of the way, sew a fourth pieced unit to the remaining side of the center square. Press toward newly-added pieced unit. Align the partially-sewn, pieced unit with the fourth pieced unit, finish sewing the seam and press.

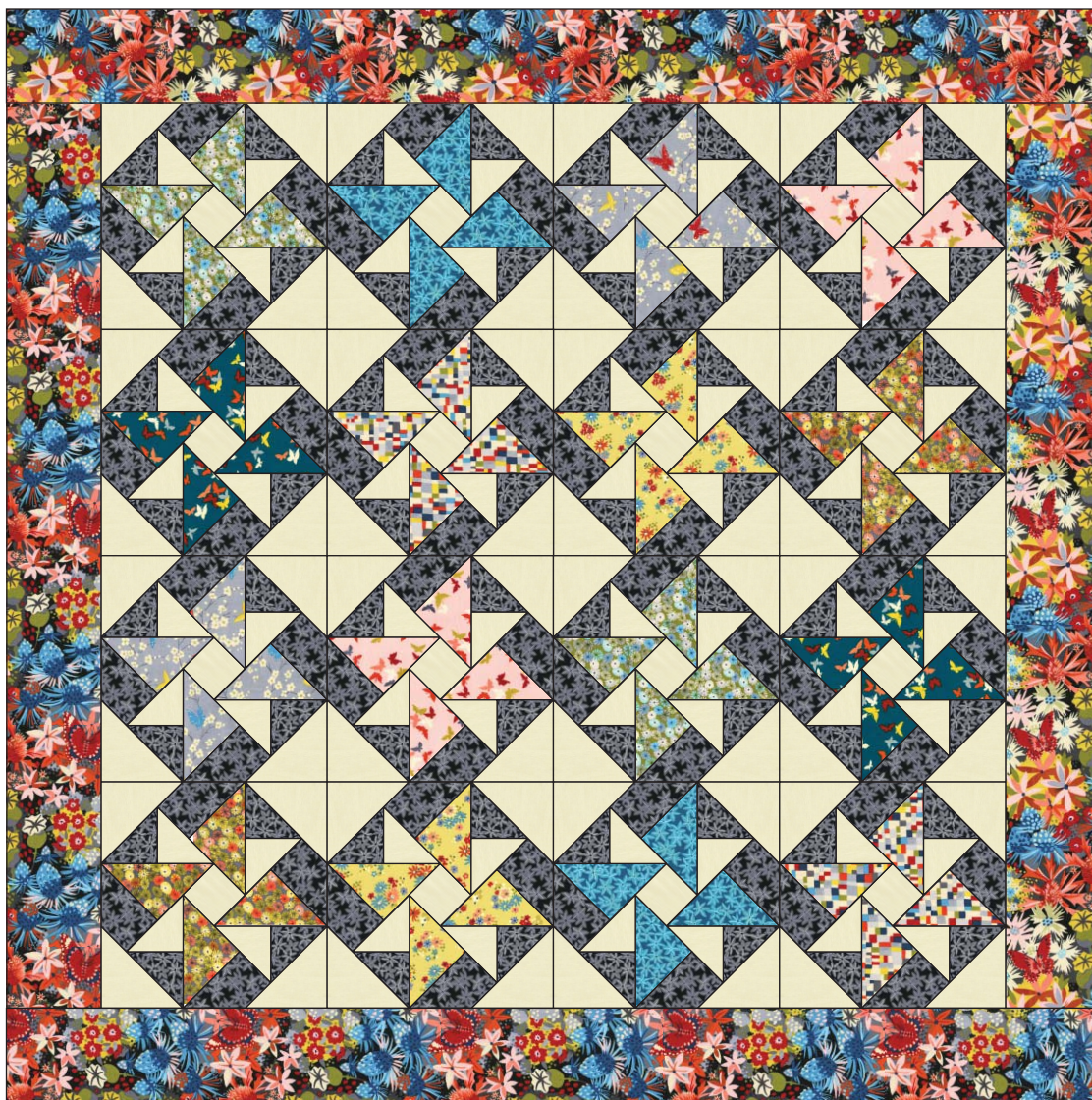
Center a large Cream triangle on each side of the block and sew. Press toward Cream triangles. Repeat all steps to make a total of [16] blocks.



Make 16

Arrange blocks as shown below. Sew blocks into horizontal rows and press seams in opposite directions, row to row. Sew rows together and press to complete quilt center.

Sew 5-1/2" DC7085 Teal border strips together end to end. Cut [2] strips 48-1/2" long and sew to sides of quilt center. Press toward border. Cut [2] strips 58-1/2" long and sew to top and bottom of quilt center. Press toward border to complete quilt top.




Swirly Girls

www.swirlygirlsdesign.com

© Swirly Girls Design, Inc. Permission is granted to shop owners and teachers to make copies for promotional or educational purposes.
This pattern may not be reproduced for commercial purposes.