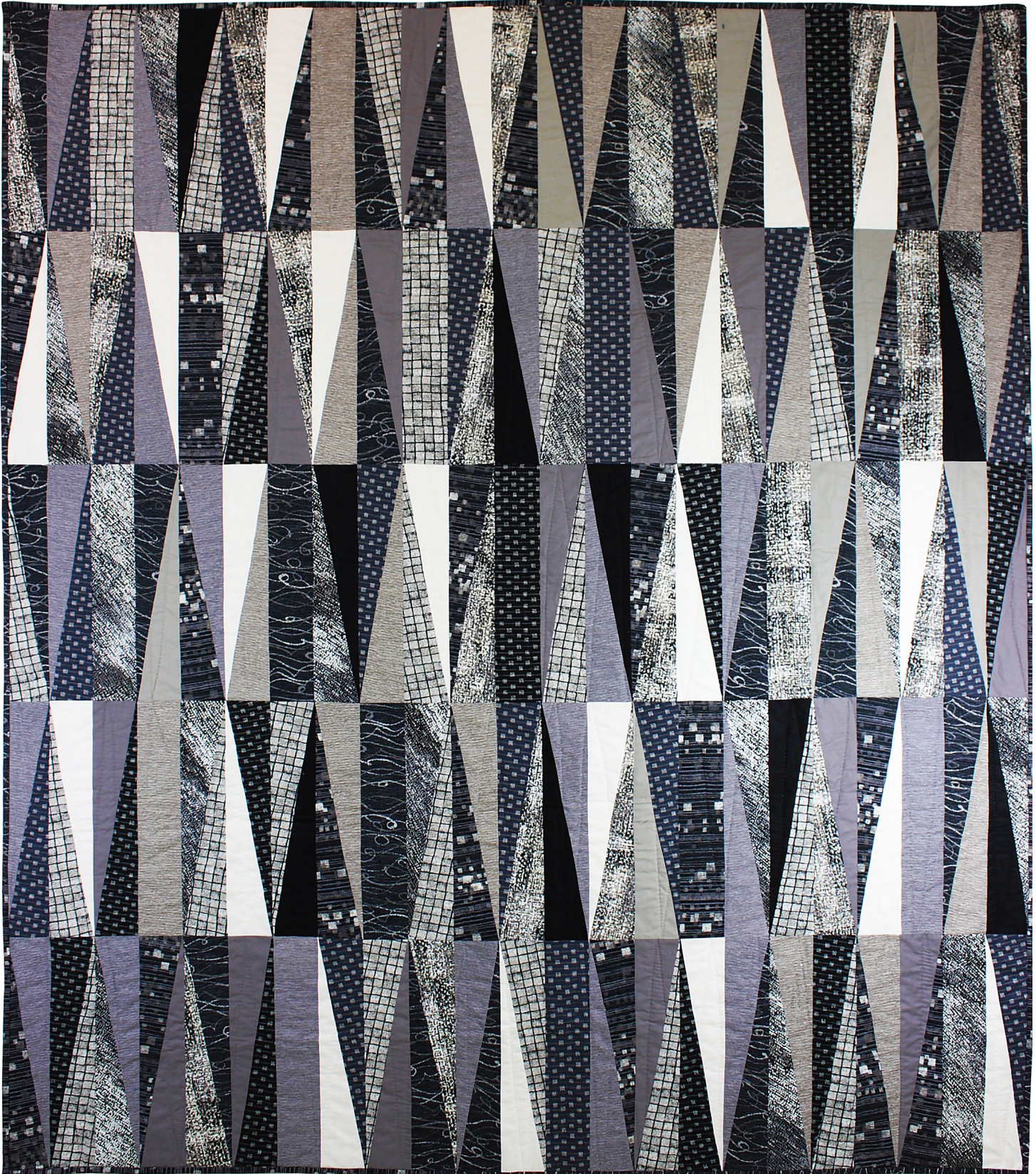


# PIXALLUSION



SIZE: 67" H X 59" W | QUILT DESIGNED BY EMILY HERRICK



# FABRIC REQUIREMENTS

BINDING: 1/2 YARD CJ6819 EBONY



CJ6816 Taupe  
Pixelism  
3/4 yard



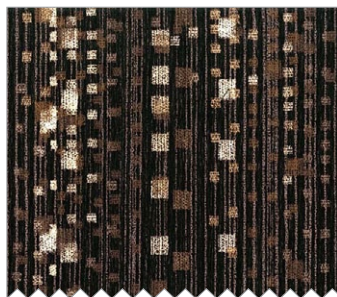
CJ6817 Taupe  
Pixel Plaid  
3/4 yard



CJ6818 Taupe  
Textured Tiles  
3/4 yard



CJ6819 Ebony  
Streamers  
3/4 yard + 1/2 yard-binding



CJ6820 Ebony  
Cityscape  
3/4 yard



CJ6821 Charcoal  
Crossroads  
3/4 yard



CJ6821 Ebony  
Crossroads  
3/4 yard



CJ6822 Stone  
Blurred Lines  
3/4 yard



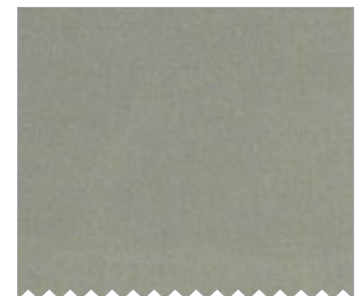
CJ6822 Taupe  
Blurred Lines  
3/4 yard



SC5333 Black  
Cotton Couture  
3/4 yard



SC5333 Coin  
Cotton Couture  
3/4 yard



SC5333 Earth  
Cotton Couture  
3/4 yard



SC5333 Cream  
Cotton Couture  
3/4 yard

## "Pixelism"

Quilt by Emily Herrick

Size: Approximately 59" W x 67" H Skill Level : Intermediate

### Materials

Fabric	Yardage	Cutting
CJ6816-TAUP	3/4 yd	(6) 3 1/2" x WOF strips from each print (1) 3" x WOF strips from each print
CJ6817-TAUP		
CJ6818-TAUP		
CJ6819-EBON		
CJ6820-EBON		
CJ6821-CHAR		
CJ6821-EBON		
CJ6822-STON		
CJ6822-TAUP		
SC5333-BLACK		
SC5333-COIN		
SC5333-EARTH		
SC5333-CREAM		
<b>Also Needed:</b> Template Plastic 65" x 72" backing, 65 x 72" batting, threads to match, scissors, straight pins, rotary cutter, acrylic ruler.		

### Disclaimers

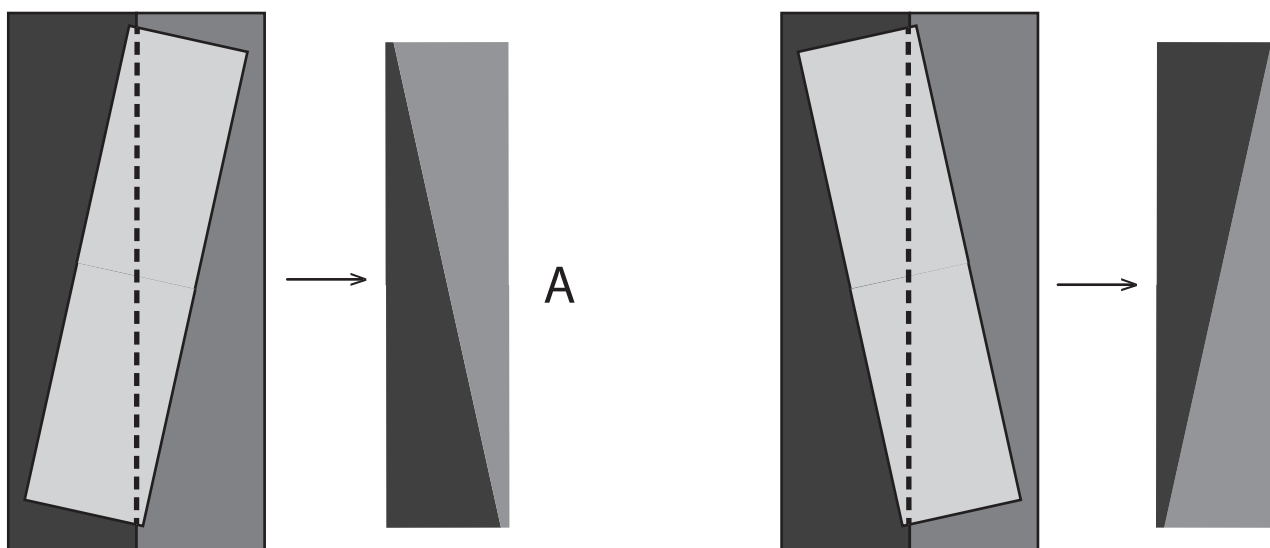
This pattern is provided as a courtesy to quilt stores, catalogs, and quilters. Michael Miller Fabrics, LLC is not responsible for the accuracy of any kits packaged to accompany this pattern. Please direct any inquiries to the kit maker.

While every attempt has been made to give accurate measurements, yardage requirements, and construction directions; this does not allow personal variations in measuring, cutting, and or sewing. The enclosed directions were used in the construction of the original quilt.

## Directions

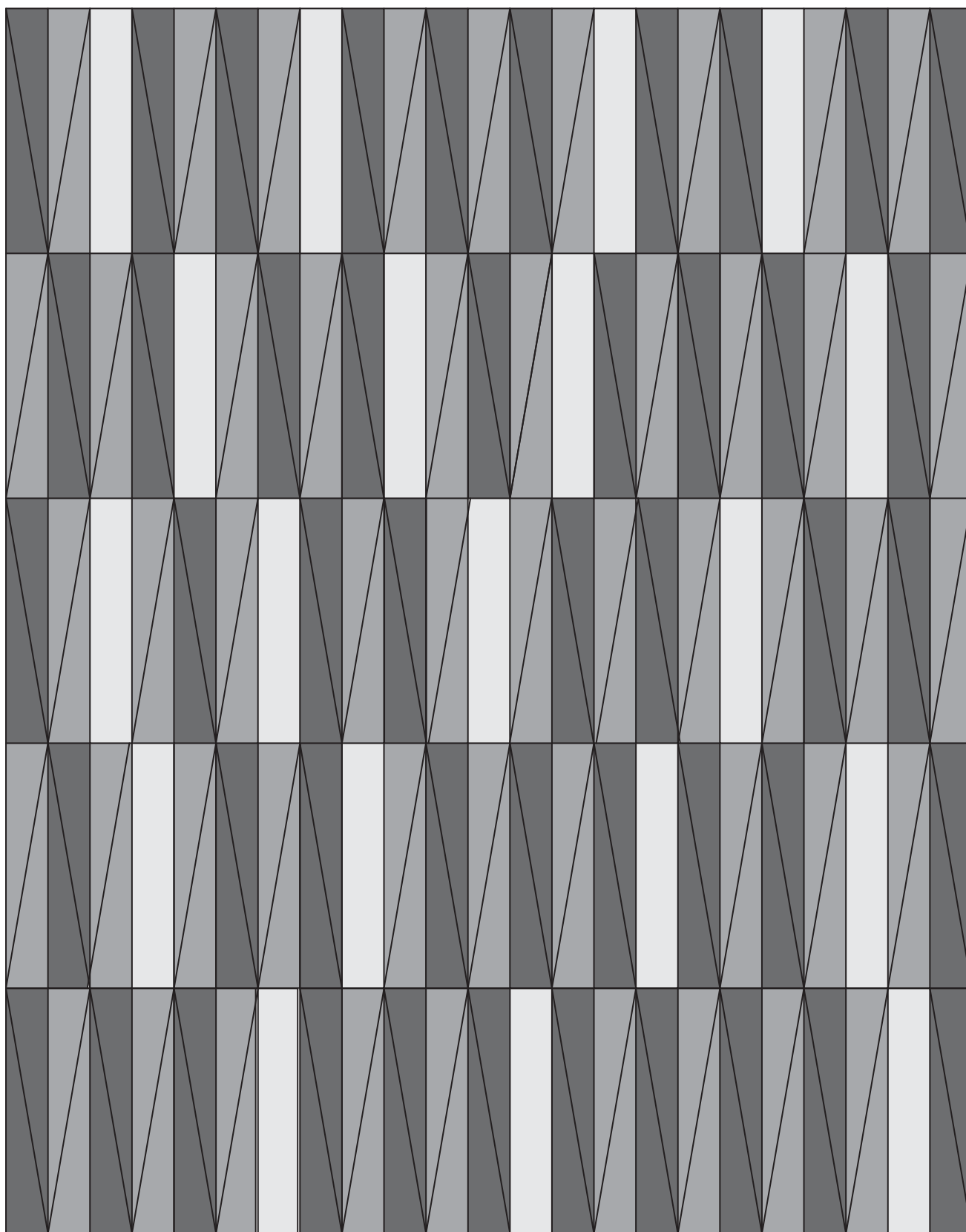
Use 1/4" seam allowance and press all seams open unless otherwise directed

1. From the 3" x WOF strips cut (2) 14" long pieces from each. These are block "C". Set aside.
2. Sew the 3 1/2" x WOF strips in contrasting pairs lengthwise. Press seams open. Continue sewing pairs until all strips have been sewn.
3. Carefully trace half of each template onto template plastic. Line up the second template using the alignment marks and continue tracing the remaining half of each template. Label each template. Cut out on the solid line.
4. Place template "A" on a strip set as close to the top as possible, aligning the diagonal line with the strip set seam as shown in the diagram below. Carefully cut out "A" Block.



5. Continue moving template "A" down the strip cutting (3) blocks from the strip set.
6. Cut a total of 57 "A" blocks from 19 strip sets.
7. Repeat the process of aligning the template and cutting out blocks with template "B".
8. Cut a total of 60 "B" blocks from 20 strip sets.
9. Refer to the Quilt Assembly Diagram for block placement. Mix and Match blocks until you're pleased with their placement.
10. Assemble blocks together in rows, then sew rows together. Press seams open.
11. Quilt as desired, bind and Enjoy!

# Quilt Assembly Diagram



A 

B 

C 

# Pixelism Templates

