

GLITZ SAMPLER



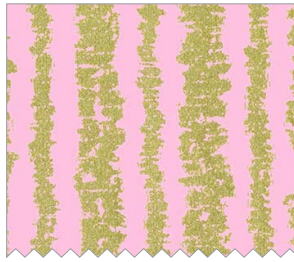
LEVEL: INTERMEDIATE | SIZE: 40" SQUARE | QUILT DESIGNED BY MARINDA STEWART

FABRIC REQUIREMENTS

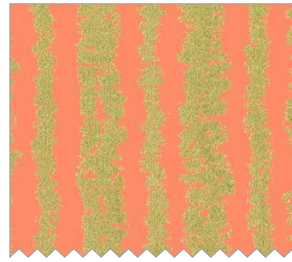
45" X 45" BACKING & BATTING



MC6932 Aqua
Glitz Garden
1/4 yard



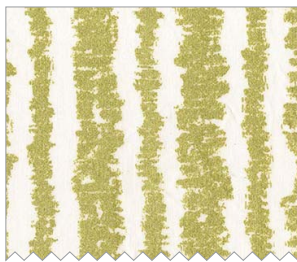
MC6930 Pink
Glitz Bars
Fat 1/8



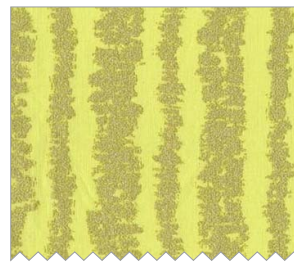
MC6930 Peach
Glitz Bars
Fat 1/8



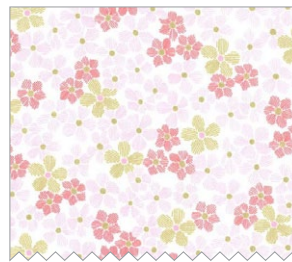
MC6930 Shell
Glitz Bars
Fat 1/8



MC6930 Bright White
Glitz Bars
Fat 1/8



MC6930 Pluto
Glitz Bars
Fat 1/8



MC6931 Pink
Glitz Flower
3" x 6" piece



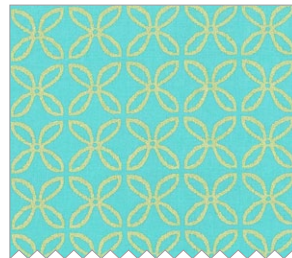
MC6931 Peach
Glitz Flower
3" x 6" piece



MC6931 Aqua
Glitz Flower
Fat 1/8



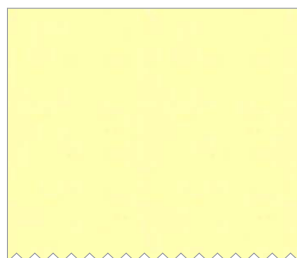
MC6933 Aqua
Glitz Diamonds
8" square



MC6957 Luna
Clover
1/8 yard



SC5333 Bright White
Cotton Couture
1 1/2 yards



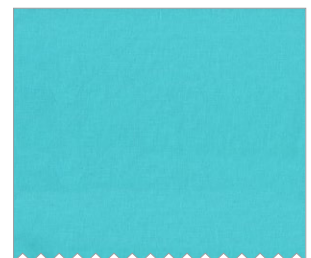
SC5333 Pluto
Cotton Couture
Fat 1/8



SC5333 Coral
Cotton Couture
4" x 14" piece



SC5333 Primrose
Cotton Couture
Fat 1/8



SC5333 Luna
Cotton Couture
2 1/2" x 6" piece

Glitz Sampler

Quilt by Marinda Stewart | Skill Level: Intermediate | Size: 40" Square

Fabric	Yardage	Cutting
MC6932 Aqua Glitz Garden	1/4 yard	(3) 7 ½" square (2) 1 ½" x 4 ½" (2) 1" x 5 ½" (2) 1 ¼" x 5" (2) 1 ½" x 6 ¾"
MC6930 Pink Glitz Bars	Fat 1/8	(10) 2 ½" squares (4) 3 ½" squares
MC6930 Peach Glitz Bars	Fat 1/8	(17) 2 ½" squares
MC6930 Shell Glitz Bars	Fat 1/8	(17) 2 ½" squares
MC6930 Bright White Glitz Bars	Fat 1/8	(2) 7 ½" squares
MC6930 Pluto Glitz Bars	Fat 1/8	(1) 1 ½" x 14 ½" (2) 1 ¼" x 2 ¾" (2) 1 ¼" x 3 ½" (2) 1 ½" x 3 ½" (2) 1 ½" x 4 ½"
MC6931 Pink Glitz Flower	3" x 6" piece	(2) small flowers (see pattern)
MC6931 Peach Glitz Flower	3" x 6" piece	(2) small flowers (see pattern)
MC6931 Aqua Glitz Flower	Fat 1/8	(4) 3" squares (2) small flowers (see pattern)
MC6933 Aqua Glitz Diamonds	8" square	(2) 2 ¾" squares – center on motif
MC6957 Luna Clover	1/8 yard	(2) 1 ¼" x 24"
SC5333 Bright White Cotton Couture	1 1/2 yards	(6) 7 ½" square (1) 4 ½" x 14 ½" (3) 1 ½" x 7 ½" (9) 2 ½" x 7 ½" (2) 1 ½" x 6" (2) 1 ½" x 7 ½" (2) 1 ½" x 7" (2) 1 ½" x 8 ½" (2) 6 ½" x 28 ½" (2) 6 ½" x 41" 1 ¼" wide bias = 4 5/8 yard *
SC5333 Pluto	Fat 1/8	(4) 3" square

Cotton Couture		(12) ½ leaves (see pattern) (4) large leaves (see pattern)
SC5333 Coral Cotton Couture	4" x 14" piece	(22) petals (see pattern)
SC5333 Primrose Cotton Couture	Fat 1/8	(6) lotus (see pattern)
SC5333 Luna Cotton Couture	2 1/2" x 6" piece	(6) lotus calyx (see pattern)
Also Needed: 45" x 45" backing, batting, scissors, straight pins, thread to match, acrylic ruler, rotary cutter, mat, hand sewing needle, fusible web, (6) ½" pink buttons, and (4) ½" gold buttons.		
OPTIONAL: (but recommended) iron-on tear-away stabilizer. If not making SC5333 Bright White bias, purchase (2) packages of pre-made bias for binding edge of quilt.		
* Pieced for length or (2) packages of pre-made bias.		

Disclaimers

This pattern is provided as a courtesy to quilt stores, catalogs, and quilters. Michael Miller Fabrics, LLC is not responsible for the accuracy of any kits packaged to accompany this pattern. Please direct any inquiries to the kit maker. Yardage requirements for this pattern may allow for excess yardage to accommodate specific placement of motifs or to allow for any fussy-cutting to achieve the finished quilt design. While every attempt has been made to give accurate measurements, yardage requirements, and construction directions; this does not allow personal variations in measuring, cutting, and or sewing. The enclosed directions were used in the construction of the original quilt.

Directions:

- Following manufacturer's directions, trace (6) small flowers onto the paper side of the fusible web. Rough cut out. Iron (2) each on MC6931 Pink, Peach, and Aqua. Cut out on pattern line. Remove paper backing. Arrange one of each color as shown or as desired on MC6931 Bright White 7 ½" square. Fuse in place. Machine satin stitch around raw edges to finish. Make (2). Set aside. **NOTE:** Recommended – iron iron-on tear-away stabilizer on the back of the 7 ½" square **BEFORE** stitching. Stitch through all layers. Remove all traces of stabilizer after stitching. Stabilizer improves stitch quality and removes distortion. This is recommended for all the applique blocks.
- For the coral daisy block – trace (11) petals and (2) large leaves onto fusible web. Cut out. Iron petals onto SC5333 Coral and the leaves onto SC5333 Pluto. Cut out. Remove paper. Arrange on SC5333 Bright White 7 ½" square as shown. Machine satin stitch all raw edges to finish. Add stem when finishing the leaves. Make (2). Set aside.
- Trace (12) half-leaf patterns onto fusible web. Cut out and iron onto SC5333 Pluto. Arrange (3) sets of half-leaves as shown on SC5333 Bright White 7 ½" square. Machine applique in place. Make two. Set aside.
- Trace (6) lotus and (6) lotus calyx onto fusible web. Cut out. Iron lotus onto SC5333 Primrose and lotus calyx onto SC5333 Luna. Cut out. Arrange (6) lotus on SC5333 Bright White 4 ½" x 14 ½" piece. Iron in place. Add (6) lotus calyx on top of lotus as shown. Finish all raw edges with satin stitching. Sew one MC6930 Pluto 1 ½" x 14 ½" piece to the right side of the lotus strip.

5. To make a right square triangle – place one MC6931 Aqua 3" square right sides together on top of one SC5333 Pluto 3" square. Draw a line diagonally from one corner to the opposite corner. Sew $\frac{1}{4}$ " on each side of the drawn line. Cut apart on the drawn line. Press open. Yield (2) right square triangles. Trim each to an accurate $2\frac{1}{2}$ " square. Sew (7) right square triangles into a strip $14\frac{1}{2}$ " long. Sew strip to the left side of the lotus panel. Set aside.
6. To make the offset log cabin block – sew one MC6930 Pluto $1\frac{1}{4}$ " x $2\frac{3}{4}$ " piece to the top of one MC6933 $2\frac{3}{4}$ " square. Sew one MC6930 Pluto $1\frac{1}{4}$ " x $3\frac{1}{2}$ " piece to the right side. Sew one SC5333 Pluto $1\frac{1}{2}$ " x $4\frac{1}{2}$ " piece to the left side. Round #2 – sew one MC6932 $1\frac{1}{2}$ " x $4\frac{1}{2}$ " piece to the top, one MC6932 $1"$ x $5\frac{1}{2}"$ piece to the right, one MC6932 $1\frac{1}{4}"$ x $5"$ piece to the bottom and one MC6932 $1\frac{1}{2}"$ x $6\frac{3}{4}"$ piece to the right. Round #3 – sew one SC5333 Bright White $1\frac{1}{2}"$ x $6"$ piece to the top, one SC5333 Bright White $1\frac{1}{2}"$ x $7\frac{1}{2}"$ piece to the right, one SC5333 Bright White $1\frac{1}{2}"$ x $7"$ piece to the bottom and one $1\frac{1}{2}"$ x $8\frac{1}{2}"$ piece to the left. Trim finished block to an accurate $7\frac{1}{2}"$ square. Make (2). Set aside.
7. For the prairie point block – To make a prairie point - fold one $2\frac{1}{2}"$ square in half. Fold the folded edges to meet in the center making a triangle. Press firmly to hold. Make (9) each from MC6930 Pink, Shell, and Peach $2\frac{1}{2}"$ squares. To assemble one block – arrange one prairie point of each color, evenly spaced on one SC5333 Bright White $2\frac{1}{2}"$ x $7\frac{1}{2}"$ piece. Place one SC5333 $1\frac{1}{2}"$ x $7\frac{1}{2}"$ right sides together along the top edge. Stitch in place. Press. Repeat for rows two and three of the block alternating the placement of the colors. Make (3) $7\frac{1}{2}"$ square blocks. Set aside.
8. Assemble the quilt in vertical rows as follows – Row #1 – MC6932 $7\frac{1}{2}"$ block, (3) half-leaf block, prairie point block, and log cabin block. Row #2 – MC6930 Bright White block, log cabin block, daisy block, and MC6932 $7\frac{1}{2}"$ square. Sew to the right side of Row #1. Row #3 – Prairie point block, lotus panel, and (3) half-leaf blocks. Sew to the right side of Row #2. Row #4 – Daisy block, MC6932 $7\frac{1}{2}"$ square, MC6930 Bright White block, and prairie point block. Sew to the right side of Row #3.
9. Sew one SC5333 Bright White $6\frac{1}{2}"$ x $28\frac{1}{2}"$ piece to the top and bottom of the quilt. Sew one SC5333 Bright White $6\frac{1}{2}"$ x $41"$ piece to each side. **NOTE:** Quilt may be bound as is or continue to create asymmetrical edge.
10. Layer backing, batting, and quilt top. Baste.
11. Quilt as desired.
12. Free hand draw the asymmetrical edge on all four sides as shown. Trim away excess.
13. Make the remaining MC6930 Pink, Peach, and Shell $2\frac{1}{2}"$ squares into prairie points. Do the same for the MC6930 Pink $3\frac{1}{2}"$ squares. Arrange prairie points randomly on all four sides of the quilt as shown. Align raw edges of the prairie points with the raw edges of the quilt. Points will face in. Sew $1\frac{1}{4}"$ bias, right sides together, to all four sides. Press binding to the back of the quilt. Turn under raw edges and stitch in place. Clean finish each corner. Prairie points will extend beyond the finished edge of the quilt.

- 14.** To make dimensional aqua flowers for block in Step #3 – fold 1/8” to the back side of MC6957 1 ¼” x 24” strip. Press. Repeat. Topstitch hem in place. Mark every 1 ½” along the raw edge. With a threaded hand sewing needle run a basting stitch in a ‘U’ pattern between marks (UUUU). Hem edge is at the open top of the ‘U’. Pull thread tightly to gather, creating a series of petals. Loosely wrap petal strip into a spiral. Sew in place as shown on leaf block. Make (2). Sew one gold button in the center of each flower.
- 15.** Sew one gold button in the center of each daisy as shown. Sew one pink button in the center of each of the flowers in the MC6930 Bright White blocks to complete the quilt.

"Glitz Sampler" PATTERNS

