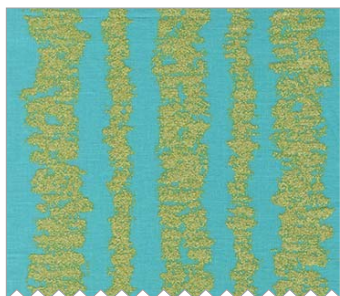


# GLITZ PLACEMAT SET

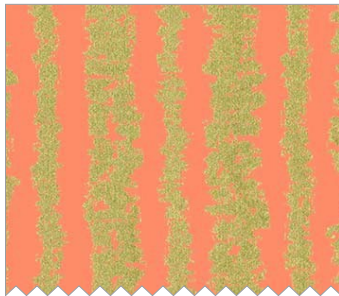


# FABRIC REQUIREMENTS

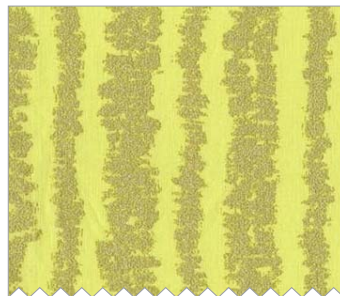
BATING 12 1/2" X 18 1/2"



MC6930 Luna  
Glitz Bars  
3/8 yard



MC6930 Peach  
Glitz Bars  
3/8 yard



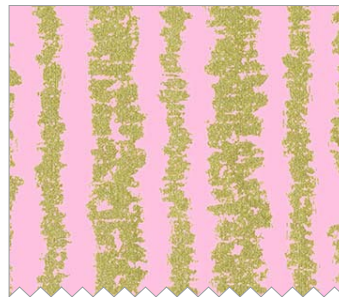
MC6930 Pluto  
Glitz Bars  
3/8 yard



MC6930 Shell  
Glitz Bars  
3/8 yard



MC6930 Bright White  
Glitz Bars  
3/8 yard



MC6930 Pink  
Glitz Bars  
3/8 yard



MC6957 Bright White  
Clover  
Fat 1/4



MC6957 Luna  
Clover  
Fat 1/4



MC6957 Shell  
Clover  
Fat 1/4



MC6957 Peach  
Clover  
Fat 1/4



MC6957 Pink  
Clover  
Fat 1/4



MC6957 Pluto  
Clover  
Fat 1/4



SC5333 Bright White  
Cotton Couture  
Fat 1/8

## Glitz Placemat, Napkin, and Napkin Ring

Set designed by Marinda Stewart | Skill Level: Confident Beginner

Placemat = 11 1/2" H x 17 1/2" W Napkin = 17" Square Napkin Ring = 1 3/8" x 1 3/4"
--

### For one placemat:

Fabric	Yardage	Cutting
MC6930 - Glitz Bars (6) colors used: Luna, Shell, Peach, Pink, Pluto, and Bright White	3/8 yard	(1) 12 1/2" x 18 1/2" (2) 2 3/4" x 14" (2) 2 3/4" x 20"
SC5333 Bright White Cotton Couture	Fat 1/8	(1) 7 3/4" x 14" **
<b>Also Needed:</b> 12 1/2" x 18 1/2" batting, thread to match (including metallic gold for quilting), scissors, straight pins, acrylic ruler, rotary cutter, and mat. <b>Optional:</b> (but recommended) metallic thread sewing machine needle.		
* Save scraps for Napkin Ring		
** Total yardage for (6) placemats = 1/2 yard		

### Disclaimers

This pattern is provided as a courtesy to quilt stores, catalogs, and quilters. Michael Miller Fabrics, LLC is not responsible for the accuracy of any kits packaged to accompany this pattern. Please direct any inquiries to the kit maker. Yardage requirements for this pattern may allow for excess yardage to accommodate specific placement of motifs or to allow for any fussy-cutting to achieve the finished quilt design. While every attempt has been made to give accurate measurements, yardage requirements, and construction directions; this does not allow personal variations in measuring, cutting, and or sewing. The enclosed directions were used in the construction of the original quilt.

### Directions for one placemat:

1. Sew one MC6930 2 3/4" x 20" piece centered on one side of SC5333. Begin and end stitching 1/4" in from the edge of SC5333. Sew one MC6930 2 3/4" x 14" piece one centered on one side of SC5333. Miter corner where ends overlap. Trim away excess. Repeat for the remaining sides and corners.
2. Layer placemat top on top of 12 1/2" x 18 1/2" batting. Stitch in the ditch around all sides of SC5333 center.

3. Mark off center in generous 1" measurements horizontally and vertically on SC5333. Thread top of the machine with metallic thread (use a needle especially for metallic thread). Stitch across SC5333 horizontally and vertically in a grid. Pull all threads to the back.
4. Place quilted top right sides together on top of MC6930 12 ½" x 18 ½" piece. Sew around all four side, leaving a 5" opening for turning. Trim corners. Turn to the right side. Press. Turn raw edges of the opening to the interior of the placemat. Slip stitch closed. Topstitch around the edge 1/8" inches. Make one placemat in each of the six colors = Luna, Shell, Peach, Pink, Pluto, and Bright White.

#### Directions for one Napkin Ring:

**From MC6930 scraps – (1) 7" x 2 ¾", and (1) 1 ¾" x 11" - 12"**

- (1) Piece 1" wide white grosgrain ribbon 6 ½"
- (1) Piece batting 1 3/8" x circumference of cardboard tube
- (1) Piece cardboard tube 1 3/8" wide
- (1) Gold tone button
- (1) Hand sewing needle

Threads to match, fabric glue, and scissors

1. Cut batting to fit outside of cardboard tube. Glue in place. Butt edges, do not overlap batting.
2. Fold under ¼" hem on MC6930 2 ¾" x 7" piece on 2 ¾" edge. Wrap around the cardboard tube overlapping the edges with the fold on top. Fold excess fabric to the inside of the cardboard tube. Glue in place.
3. To finish the inside, turn under ¼" hem on one end of the grosgrain ribbon. Glue inside of the cardboard tube, covering the raw edges of MC6930. Overlap folded end on top.
4. Sew MC6930 1 ¾" x 12" piece right sides together along the 1 ¾" ends using a generous 1/8" seam. Press open. Turn under 1/8" on top edge of circle. Press. Repeat. Topstitch hem in place.
5. Using a threaded hand sewing needle, gather circle along raw edge. Pull thread tightly to make a gathered circle. Knot off. Glue to the cardboard tube over the seam. Glue gold tone button in the center to finish.

#### Directions for one Napkin:

(1) Fat quarter MC6957 Clover in colors: Luna, Shell, Peach, Pink, Pluto, and Bright White.  
Threads to match.

1. From MC6957 Clover cut one 18" x 18" square. Turn under ¼" on all four sides. Press. Repeat. Topstitch pressed hem in place on all four sides.