

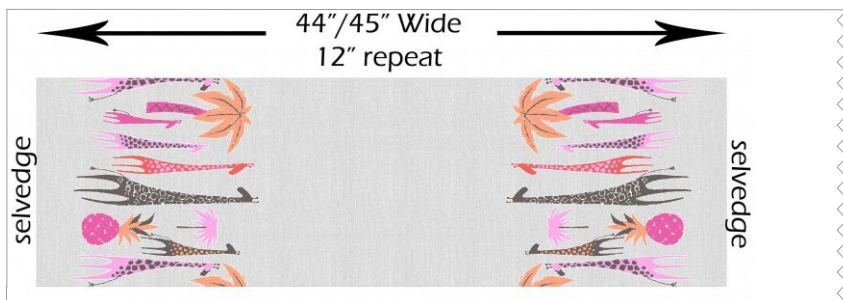
MIGRATION



SIZE: 64 3/4" W X 81 1/4" H | QUILT DESIGNED BY MARSHA EVANS MOORE

FABRIC REQUIREMENTS

4 3/4 YARDS BACKING & 66" X 84" BATTING



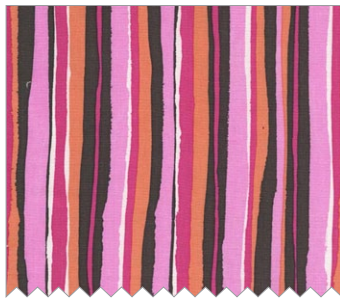
CX6891 Pink
Giraffe Border
2 yards



CX6890 Pink
Giraffes
1/2 yard



CX6892 Fuchsia
Pineapple Palm
1/4 yard



CX6894 Pink
Palm Stripe
3/8 yard



CX6895 Pink
Tangier Tiles
3/8 yard



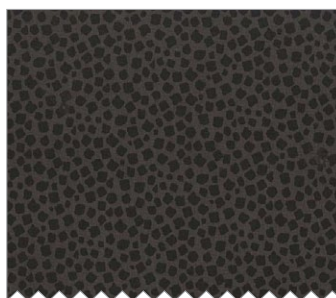
CX6897 Pink
Migration
7/8 yard



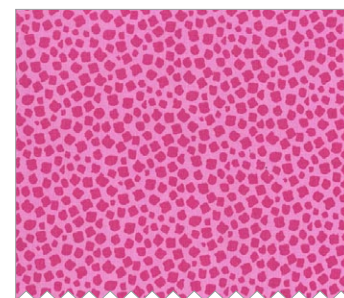
CX6893 Pink
Geo Giraffe
3/4 yard



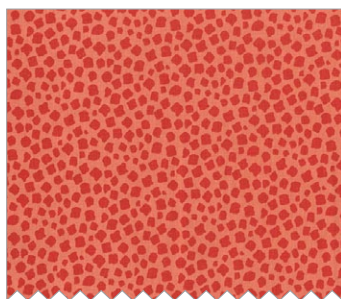
CX6893 Mist
Geo Giraffe
3/4 yard



CX6896 Charcoal
Giraffe Spots
3/8 yard



CX6896 Strawberry
Giraffe Spots
1/2 yard



CX6896 Melon
Giraffe Spots
3/8 yard



CX6898 Fuchsia
Bark Cloth
1 yard



CX6898 Melon
Bark Cloth
1/4 yard



CX6898 Charcoal
Bark Cloth
1/4 yard

Migration!

Quilt by Marsha Evans Moore

Size: 64 $\frac{3}{4}$ " x 81 $\frac{1}{4}$ "

Material Requirements:

Migration! Fabrics by Michael Miller Fabric

Fabric	Yardage	Cutting
CX6891 Pink Giraffe Border	2 yards	Cut two 64 $\frac{1}{2}$ " x 13" border strips
CX6890 Pink Giraffes	$\frac{1}{2}$ yard	Cut seven 5 $\frac{1}{2}$ " x 7 $\frac{1}{2}$ " blocks
CX6892 Fuchsia Pineapple Palm	$\frac{1}{4}$ yard	Cut four 5 $\frac{1}{2}$ " x 7 $\frac{1}{2}$ " blocks
CX6894 Pink Palm Stripe	$\frac{3}{8}$ yard	Cut four 11 $\frac{1}{2}$ " x 2" vertical frames Cut six 11 $\frac{1}{2}$ " x 2 $\frac{1}{2}$ " rectangles Cut four 5 $\frac{1}{2}$ " x 2 $\frac{1}{2}$ "
CX6895 Pink Tangier Tiles	$\frac{3}{8}$ yard	Cut four 11 $\frac{1}{2}$ " x 2" vertical frames Cut seven 11 $\frac{1}{2}$ " x 2 $\frac{1}{2}$ " rectangles Cut four 5 $\frac{1}{2}$ " x 2 $\frac{1}{2}$ " horizontal frames
CX6897 Pink Migration	$\frac{7}{8}$ yard	Cut six WOF x 2 $\frac{1}{4}$ " strips Cut four 25" x 2 $\frac{1}{4}$ " strips
CX6893 Pink Geo Giraffe	$\frac{3}{4}$ yard	Cut two WOF x 3" strips Cut one WOF x 1 $\frac{1}{2}$ " strip Cut two 25" x 3" strips Cut one 25" x 1 $\frac{1}{2}$ " strip Cut four 11 $\frac{1}{2}$ " x 2 $\frac{1}{2}$ " rectangles Cut 21 2 $\frac{1}{4}$ " x 2 $\frac{1}{4}$ " prairie points
CX6893 Mist Geo Giraffe	$\frac{3}{4}$ yard	Cut two WOF x 3" strips Cut one WOF x 1 $\frac{1}{2}$ " strip Cut two 25" x 3" strips Cut one 25" x 1 $\frac{1}{2}$ " strip Cut nine 11 $\frac{1}{2}$ " x 2 $\frac{1}{2}$ " rectangles Cut 21 2 $\frac{1}{4}$ " x 2 $\frac{1}{4}$ " prairie points
CX6896 Charcoal Giraffe Spots	$\frac{3}{8}$ yard	Cut eight 11 $\frac{1}{2}$ " x 2 $\frac{1}{2}$ " rectangles Cut 21 2 $\frac{1}{4}$ " x 2 $\frac{1}{4}$ " prairie points
CX6896 Strawberry Giraffe Spots	$\frac{1}{2}$ yard	Cut four 11 $\frac{1}{2}$ " x 2" vertical frames Cut two 11 $\frac{1}{2}$ " x 2 $\frac{1}{2}$ " rectangles Cut four 5 $\frac{1}{2}$ " x 2 $\frac{1}{2}$ " horizontal frames Cut 41 2 $\frac{1}{4}$ " x 2 $\frac{1}{4}$ " prairie points

CX6896 Melon Giraffe Spots	3/8 yard	Cut six 11 1/2" x 2" vertical frames Cut seven 11 1/2" x 2 1/2" rectangles Cut four 5 1/2" x 2 1/2" horizontal frames
CX6898 Fuchsia Bark Cloth	1 yard	Cut four 11 1/2" x 2" vertical frames Cut three 11 1/2" x 2 1/2" rectangles Cut four 5 1/2" x 2 1/2" horizontal frames Cut 41 2 1/4" x 2 1/4" prairie points
CX6898 Melon Bark Cloth	1/4 yard	Cut 41 2 1/4" x 2 1/4" prairie points
CX6898 Charcoal Bark Cloth	1/4 yard	Cut 21 2 1/4" x 2 1/4" prairie points

4 3/4 yards backing fabric

You will also need: 66" x 84" piece quilt batting, thread to match fabrics, sewing machine, pins, a sewing needle, iron, acrylic ruler, rotary cutter and cutting mat.

Cutting

1. Cut the Giraffe border piece centered on the border print.
2. Cut the 5 1/2" x 7 1/2" blocks centered over the motifs on the fabric.
3. Cut the zigzag strips centered over the white zigzag lines on the fabric.

Directions

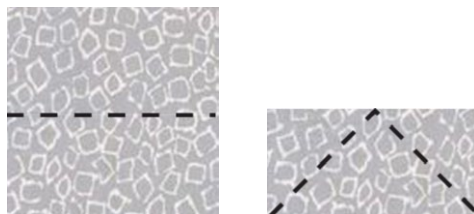
Stitch all seams right sides together unless otherwise indicated.

Prairie Points and Borders

1. Stitch the 25" x 3" Geo Giraffe strips to the WOF strips matching the colors.
Trim the joined strips to 64 1/2".



2. Fold each prairie point square in half right side out and press with your iron.



3. Fold the corners of the folded edge to the center of the raw edges and press the folds in place.



4. Pin the prairie points folded side down to one long edge of the right side of the pink Geo Giraffe strip in the following order: Pink Bark, Gray Geo Giraffe, Orange Spots, Pink spots and Black. Alternate the Black Bark and Black Spots in the black position. You will use 48-50 prairie points along each strip. Baste the prairie points to the strip $\frac{1}{4}$ " from the edge. (Only a portion of the strip is shown in the top diagram.)



5. Pin the prairie points folded side down to one long edge of the right side of the gray Geo Giraffe strip in the following order: Pink Bark, Pink Geo Giraffe, Orange Spots, Pink spots and Black. Alternate the Black Bark and Black Spots in the black position. Baste the prairie points to the strip $\frac{1}{4}$ " from the edge.



6. Stitch the edge of the gray Geo Giraffe strips with the prairie points to the upper edge of the Giraffe Border. Stitch the edge of the pink Geo Giraffe strips with the prairie points to the lower edge of the Giraffe Border.



Blocks and Rectangles

1. Following the diagram for color combinations, stitch the horizontal frames to the top and bottom edges of the blocks. Then stitch the vertical frames to the sides of the blocks.



2. Arrange four blocks for the top and bottom rows with five rectangles between each block and 1 rectangle on each end as shown in the diagram.
3. Arrange three blocks for the center row with five rectangles between each block.
4. Stitch the rectangles in each group together.



5. Stitch the rectangles and blocks together to complete the rows. Trim the top and bottom rows with 4 blocks to $64 \frac{1}{2}$ " wide. (Only the top row of four blocks is shown. Make a second row of four blocks as shown in the photo.)



6. Stitch the $25'' \times 3''$ zigzag strips to the WOF strips matching the colors and the pattern of the zigzags. Trim the joined strips to $64 \frac{1}{2}''$.
7. Stitch the zigzag strips with orange to the upper edge of the rows. Stitch and zigzag strips with the pink to the lower edge of the rows.

Joining

Follow the photo to join the rows.

1. Stitch the rows of blocks and rectangles to the edges of the geo giraffe strips.
2. Stitch the $25'' \times 1 \frac{1}{2}''$ Geo Giraffe strips to the WOF strips matching the colors. Trim the joined strips to $64 \frac{1}{2}''$.
3. Stitch the pink geo giraffe strips to the upper edge of the quilt and the gray geo giraffe strip to the lower edge of the quilt.