

Birds & THE BEES
tamaraKATE.....

Flight Medallion QUILT



Flight Medallion Quilt

Fabric Requirements



DC6823 CORAL
FEATHERED FLOCK
1/4 yard



DC6823 STONE
FEATHERED FLOCK
1/2 yard



DC6824 CORAL ALL
THE WEE BEASTS 1/4
yard



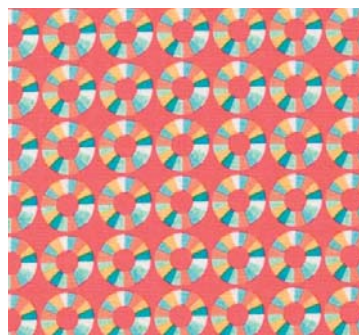
DC6825 CORAL
LOVE BUG
1 yard



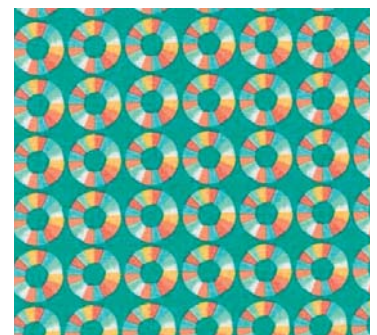
DC6825 STONE
LOVE BUG
1/4 yard



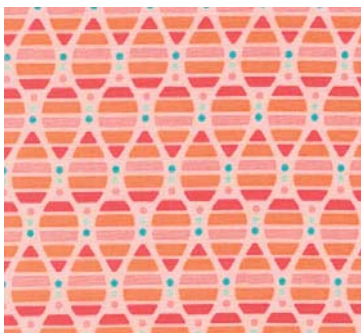
DC6826 CORAL
TOUTES LES PLUMES
1 yard



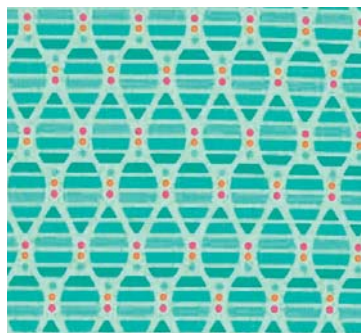
DC6827 CORAL
EYE CANDY
1/4 yard



DC6827 PEACOCK
EYE CANDY
1/4 yard



DC6828 CORAL
HONEY HONEY
1/4 yd + **BACKING:** 3 yds



DC6828 PEACOCK
HONEY HONEY
1/4 yard



DC6829 STONE
BABY THE STARS SHINE BRIGHT
1/4 yard



DC6829 TEAL
BABY THE STARS SHINE BRIGHT
1/4 yard



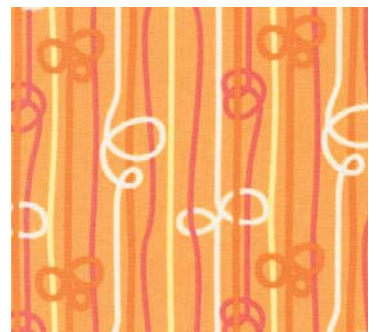
DC6830 CORAL
BLOSSOMING
1/4 yard



DC6830 PEACOCK
BLOSSOMING
1/4 yard



DC6830 LEAF
BLOSSOMING
1/4 yard



DC6831 MANGO LOOP-
DI-LOOP
1/4 yd + **BINDING:** 1/2 yard

Flight Medallion Quilt

Finished Quilt Size: 48" x 48"

Skill Level: Beginner

All seam allowances are ¼".

Also Needed:

- 48" x 48" quilt batting.
- A rotary cutter, a long acrylic ruler with 45° markings, cutting mat, thread, scissors, pins, pencil.

Cutting Instructions:

- DC6831 LOOP-DI-LOOP - MANGO - Cut 5 strips 2¼" x WOF. Set aside for binding.
- DC6828 HONEY HONEY - CORAL - Cut 2 pieces 52" x WOF (Width of Fabric). Sew together along long edges. Press seams open. Trim to 52" wide. Set aside for backing.
- DC6823 FEATHERED FLOCK - CORAL - Fussy cut (2) 6½" squares, centred on birds of your choice.
- DC6823 FEATHERED FLOCK - STONE - Fussy cut (4) 6½" squares, centred on birds of your choice.
- DC6828 HONEY HONEY - CORAL - Cut (2) 5¾" squares. Cut these in half diagonally.
- DC6824 ALL THE WEE BEASTS - CORAL - Cut (2) 7½" squares. Cut these in half diagonally.

Cut the following squares from remaining fabrics:

FABRIC	CUT 6½" SQUARES	CUT 7½" SQUARES
DC6824 CORAL ALL THE WEE BEASTS		2
DC6825 CORAL LOVE BUG	4	13
DC6825 STONE LOVE BUG		3
DC6826 CORAL TOUTES LES PLUMES		13
DC6827 CORAL EYE CANDY		2
DC6827 PEACOCK EYE CANDY		1
DC6828 CORAL HONEY HONEY	1	

FABRIC	CUT 6½" SQUARES	CUT 7½" SQUARES
DC6828 PEACOCK HONEY HONEY		2
DC6829 STONE BABY THE STARS SHINE BRIGHT		1
DC6829 TEAL BABY THE STARS SHINE BRIGHT		4
DC6830 CORAL BLOSSOMING	1	2
DC6830 PEACOCK BLOSSOMING		2
DC6830 LEAF BLOSSOMING		4
DC6831 MANGO LOOP-DI-LOOP	1	3

Making Half Square Triangles:

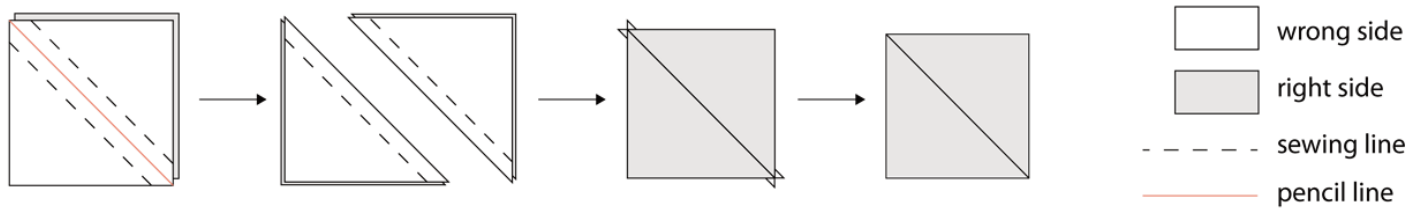
Sort your 7½" squares into pairs as follows:

- 3 pairs DC6825 LOVE BUG - STONE & DC6826 TOUTES LES PLUMES - CORAL
- 1 pairs DC6829 BABY THE STARS SHINE BRIGHT - STONE & DC6826 TOUTES LES PLUMES - CORAL
- 4 pairs DC6829 BABY THE STARS SHINE BRIGHT - TEAL & DC6826 TOUTES LES PLUMES - CORAL
- 4 pairs DC6830 BLOSSOMING - LEAF & DC6825 LOVE BUG - CORAL
- 2 pairs DC6824 ALL THE WEE BEASTS - CORAL & DC6825 LOVE BUG - CORAL
- 2 pairs DC6830 BLOSSOMING - CORAL & DC6825 LOVE BUG - CORAL
- 2 pairs DC6827 EYE CANDY - CORAL & DC6825 LOVE BUG - CORAL
- 3 pairs DC6831 LOOP-DI-LOOP - MANGO & DC6825 LOVE BUG - CORAL
- 2 pairs DC6830 BLOSSOMING - PEACOCK & DC6826 TOUTES LES PLUMES - CORAL
- 2 pairs DC6828 HONEY HONEY - PEACOCK & DC6826 TOUTES LES PLUMES - CORAL
- 1 pairs DC6827 EYE CANDY - PEACOCK & DC6826 TOUTES LES PLUMES - CORAL

Flight Medallion Quilt

Making Half Square Triangles (cont'd):

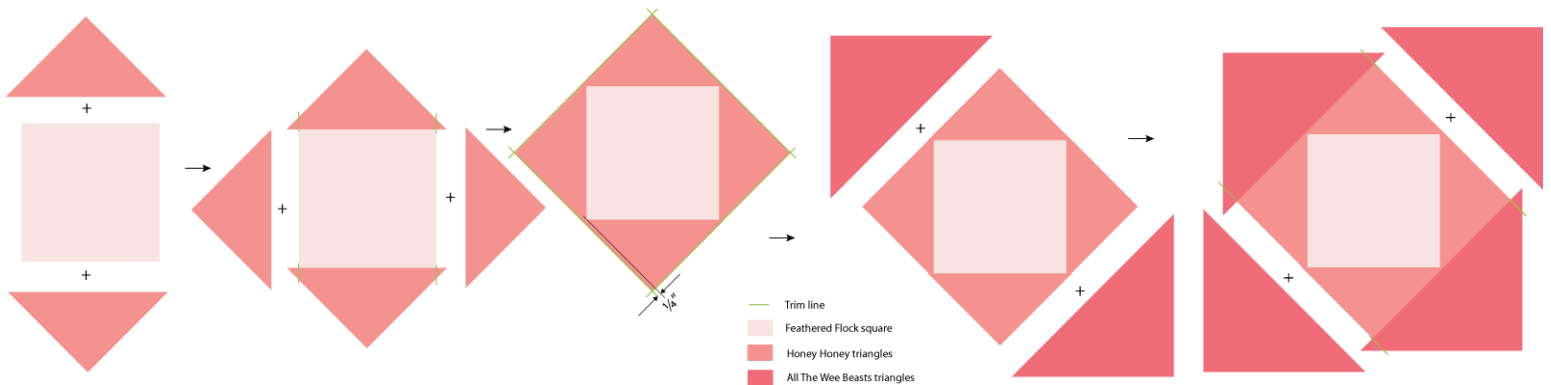
For each pair: With right sides together, place the lighter square on the darker and draw a diagonal line (with a pencil) from one corner to another. Use this line as a guide to sew a $\frac{1}{4}$ " seam down one side of the line. Turn your square around and repeat down the other side of the line. Cut directly along the pencil line, resulting in two new squares when opened. Press the seams open. Place one corner of your acrylic ruler on top of the sewn square, lining up the **seam line** (not the fabric edges) with the 45° diagonal ruler guides and making sure you have at least $6\frac{1}{2}$ " square of fabric under the ruler. (The accuracy of this step is important for perfectly matched corners when piecing the quilt). Trim the 2 exposed edges with your rotary cutter, spin the fabric around to the opposite corner and repeat, leaving a perfect $6\frac{1}{2}$ " square of fabric. You will have a few of these left over at the end.



Making Centre Square in a Square Block:

This block consists of: (1) DC6823 FEATHERED FLOCK - CORAL $6\frac{1}{2}$ " square, (4) DC6828 HONEY HONEY - CORAL $5\frac{3}{4}$ " triangles and (4) DC6824 ALL THE WEE BEASTS - CORAL $7\frac{1}{2}$ " triangles.

Piece these together as indicated in the following diagram, keeping triangles centred on sides of square. Press seams open. Square up finished block (keeping centre square centred), so that it measures $12\frac{1}{2}$ ".



Quilt Layout:

Lay the quilt top out as in the quilt photo.

Piecing Quilt Top:

Piece together as in **fig. 1**. Press seams open.

Assembling Quilt:

Layer backing, batting and quilt top. Baste or pin.

Quilt as desired.

Square up quilt top.

Join binding strips together and bind in your preferred fashion.

Flight Medallion Quilt

fig. 1

