

FLASHY



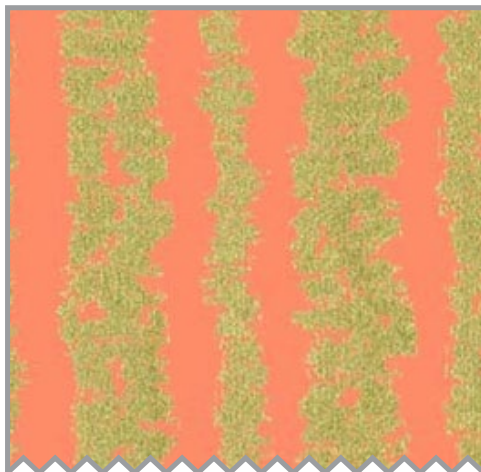
SIZE:43" X 43" | SKILL LEVEL: INTERMEDIATE | QUILT DESIGNED BY STACEY DAY

FABRIC REQUIREMENTS

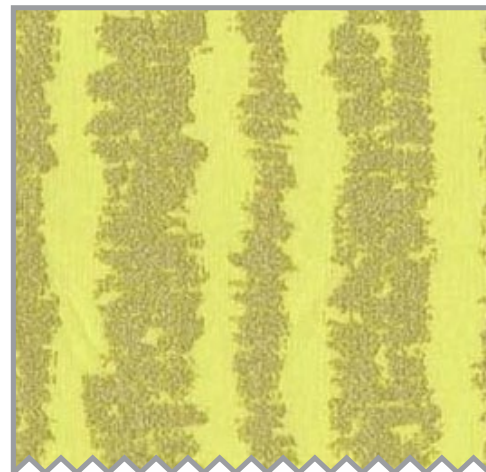
QUILT BACKING 1.5 YARDS
& BATTING 54" X 54"



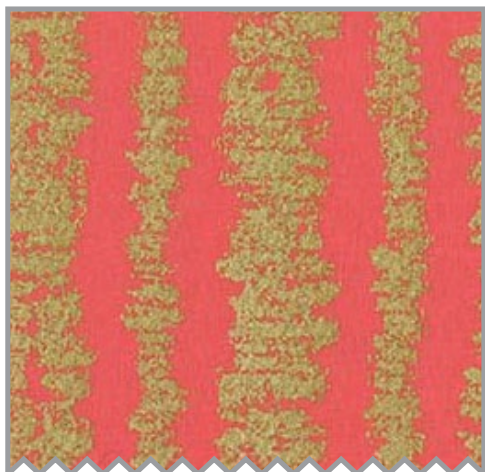
MC6930 Luna
Glitz Bars
1/2 yard



MC6930 Peach
Glitz Bars
1/2 yard



MC6930 Pluto
Glitz Bars
1/2 yard



MC6930 Shell
Glitz Bars
1/2 yard



MC6930 Bright White
Glitz Bars
1/4 yard



MC6933 Aqua
Glitzy Diamond
1 1/2 yards



SC5333 Soft White
Cotton Couture
1 1/2 yards

Flashy

Quilt designed by Stacey Day

Finished Size: 43"x 43"

Finished block: 10" square

Skill Level: Intermediate

54"x 54" piece of batting

Fabric Requirements

Fabric	Yardage	Cutting
SC5333 Soft White Cotton Couture	1 1/2 yards	2 squares, 15 3/8"; sub cut on both diagonals to make 8 Quarter Square Triangles (QST) 16 rectangles, 2 1/4"x 11 1/2" 2 squares, 8"; sub cut on one diagonal to make 4 Half Square Triangles (HST) 9 squares, 7 1/4"
MC6930 Luna Glitz Bars	1/2 yard	8 rectangles, 3 3/4"x 11" fussy cut identically so the metallic bars run perpendicular to the long edge
MC6930 Peach Glitz Bars	1/2 yard	16 squares, 3 7/8"
MC6930 Pluto Glitz Bars	1/2 yard	16 rectangles, 2 1/4"x 11 1/2" fussy cut identically so the metallic bars run parallel with the long edge
MC6930 Shell Glitz Bars	1/2 yard	5 strips, 2 1/4"x 42"
MC6930 Bright White Glitz Bars	1/4 yard	4 rectangles, 2 1/4"x 11 1/2" fussy cut identically so the metallic bars run parallel with the long edge
MC6933 Aqua	1 1/2 yards	Backing

Glitzy Diamond		
----------------	--	--

Disclaimers

This pattern is provided as a courtesy to quilt stores, catalogs, and quilters. Michael Miller Fabrics, LLC is not responsible for the accuracy of any kits packaged to accompany this pattern. Please direct any inquiries to the kit maker. Yardage requirements for this pattern may allow for excess yardage to accommodate specific placement of motifs or to allow for any fussy-cutting to achieve the finished quilt design.

While every attempt has been made to give accurate measurements, yardage requirements, and construction directions; this does not allow personal variations in measuring, cutting, and or sewing. The enclosed directions were used in the construction of the original quilt.

Instructions

All seams are 1/4" unless otherwise stated. Pieces are sewn right sides together.

1. Take the white 7 1/4" squares and mark the seam allowance in each corner, on the wrong side of the square. Fold the squares in half twice and finger press the creases to mark the center of all four sides.
2. Take the MC6930-BRIGHT WHITE 2 1/4"x 11 1/2" rectangles and fold them in half lengthwise to mark the centers. Take one of the rectangles and place it right sides together with one side of the white square. Pin at the center and at both seam allowance marks on the square. Sew the pieces together, starting and stopping the stitching at the marks and backstitching 2-3 times at either end. Press towards the rectangle to make an unfinished frame block.
3. Repeat the above step for the remaining MC6930-BRIGHT WHITE rectangles. The ends of the rectangles will be free and overlap each other. Set the square aside for now, and repeat using four of the white 7 1/4" squares and the MC6930-PLUTO rectangles to make four unfinished frame blocks.
4. Take a white 7 1/4" square and sew two of the MC6930-LUNA 3 3/4"x 11" rectangles to adjacent corners of the square, using the same method as in Step 2. Repeat for the remaining white squares and MC6930-LUNA rectangles to make four unfinished half frame blocks as shown. Set all the frame blocks aside for now.
5. Take the MC6930-PEACH 3 7/8" squares and sew them together in pairs, so that the direction of the stripes alternates as shown. Press all the pairs in the same direction, then sew the pairs together into a four patch, so that the stripes travel around the blocks as shown and the center seams match. Press the center seam to one side or open as desired. Trim and square the four patch blocks to 7 1/4" square.
6. Mark the seam allowance in the corner of the four patch squares. Sew the white 2 1/4"x 11 1/2" rectangles to the squares using the same method as before to make four unfinished frame blocks.
7. Using a preferred method, or following the directions below, mitre the corners of each unfinished frame block, trimming the seam allowance to 1/4" after sewing and pressing the seams to one side, to make finished frame and half frame blocks. Trim and square the blocks to 10 1/2".

To Make a Mitred Corner: fold the block on the diagonal, right sides together, so that the ends of the frame rectangles are matching as shown. Take your ruler and line up the 45 degree angle line with the seam joining the rectangle to the center square, so the ruler crosses the rectangles on an angle. Draw a line from the mark at the end of the seam to the outer raw edge of the rectangle. Sew along that line, careful not to sew past the marked seam allowance or through the seam allowances sewing the rectangle to the center square. Repeat for the remaining corners and trim the seam allowances to 1/4".
8. Using the layout chart as a guide, sew the frame blocks, half frame blocks, white HST and white QST together into diagonal rows, and then sew the diagonal rows together into the finished quilt top.
9. Piece the backing together so it measures at least 54"x54". Layer the backing, batting and quilt top; baste and quilt as desired. Square the quilt top. Using the 2 1/2" MC6930-SHELL strips, make and sew the binding to the quilt front. Turn to the back and secure by hand or machine. Label and enjoy!