



KIDS  
SUMMER  
CRAFT CAMP

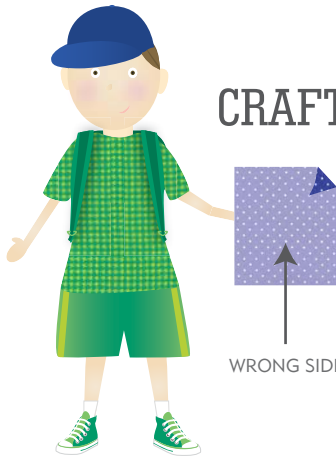
BEAN  
BAGS  
AND  
SWEET  
SMELLING  
SACHETS

**SUPPLIES**

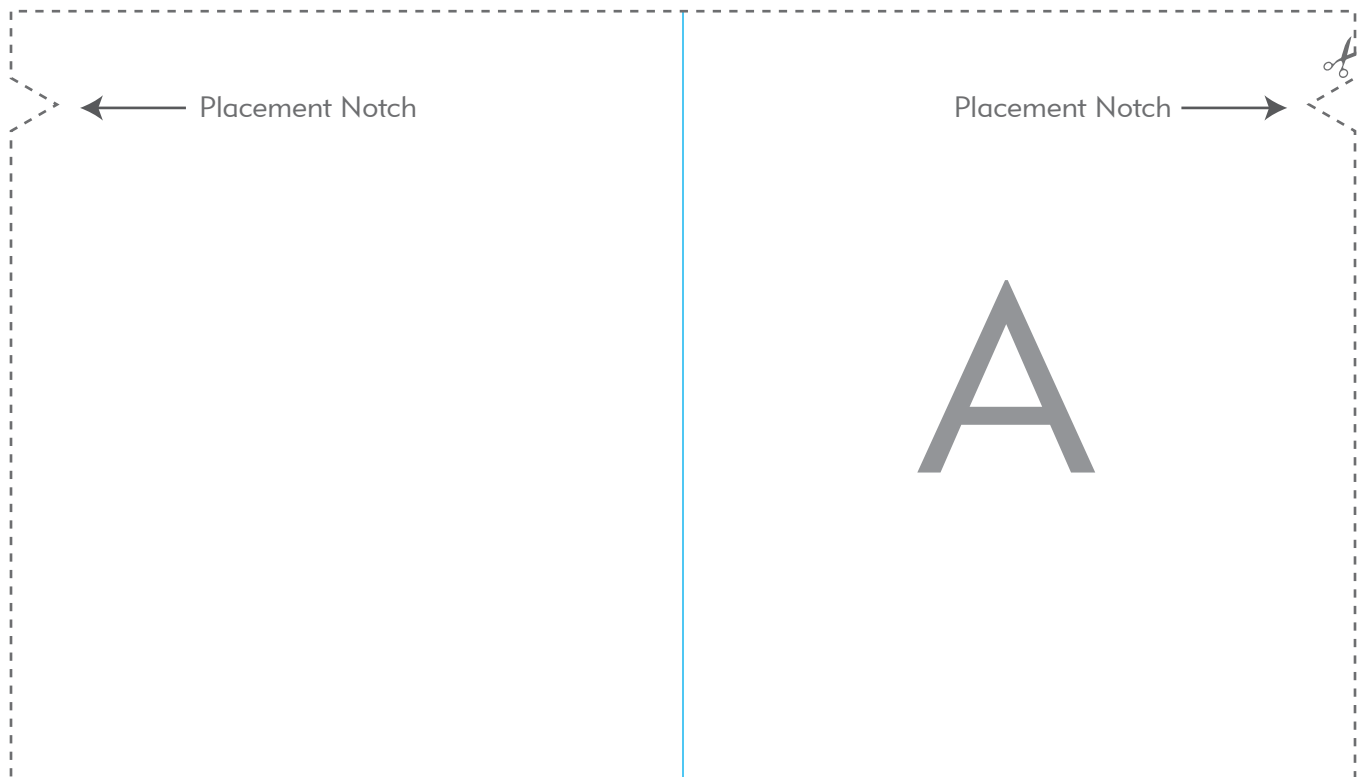
Fabric Scraps  
Sewing needle  
Threads to match  
Pins  
Scissors  
Pencil  
(to mark your stitching lines)  
Dried beans  
(for the bean bags)  
Dried Lavender  
(for the sachets)

michael miller FABRICS

## CUTTING INSTRUCTIONS FOR SIX POUCHES

<p><b>1</b> Print and cut out Pattern Piece A</p>	<p><b>3</b> Using your marking pencil, trace around Pattern Piece A, making sure to transfer the placement notches.</p>
<p><b>2</b> Place Pattern Piece A on the <b>WRONG SIDE</b> of your fabric.</p> <div data-bbox="154 588 779 1050">  <p><b>CRAFTY CAMPER TIP</b></p> <p>The wrong side of your fabric is the unprinted side- it is usually lighter than the right side</p> </div>	<p><b>4</b> Move your pattern piece over to an open space on your fabric and repeat steps 1 through 3 for the additional five pouches.</p>
<p><b>OPTIONAL</b></p> <p><b>5</b> If you are planning to use these bean bags for games, you might want three to be one color and three to be a different color. We chose to make some red and some blue.</p>	
<p><b>6</b> Cut out your fabric rectangles using the pencil line that you made in step 3.</p>	

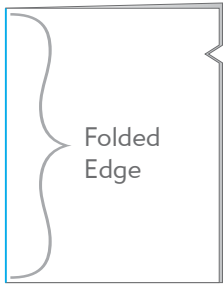
## PATTERN



 --- CUT ---  FOLD

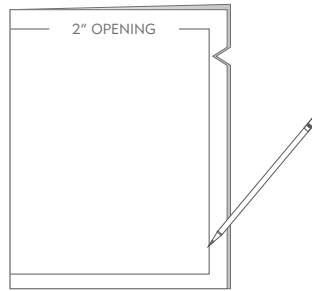
# SEWING INSTRUCTIONS

1



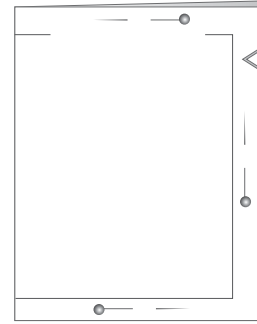
Take one fabric rectangle and fold it in half, matching the placement notches.

2



Draw a line with your pencil about 1/2" from the three raw edges and mark the 2" opening on top.

3



Pin into place

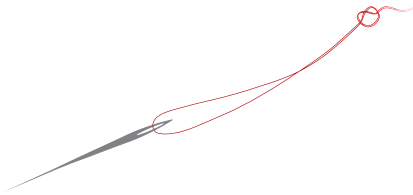
4

Sew the three open edges along your pencil line using a RUNNING STITCH making sure to leave the 2" space on top open.

A

Thread your needle and tie a knot in your doubled thread.

\*You might need an adult to help you tie the double knot!

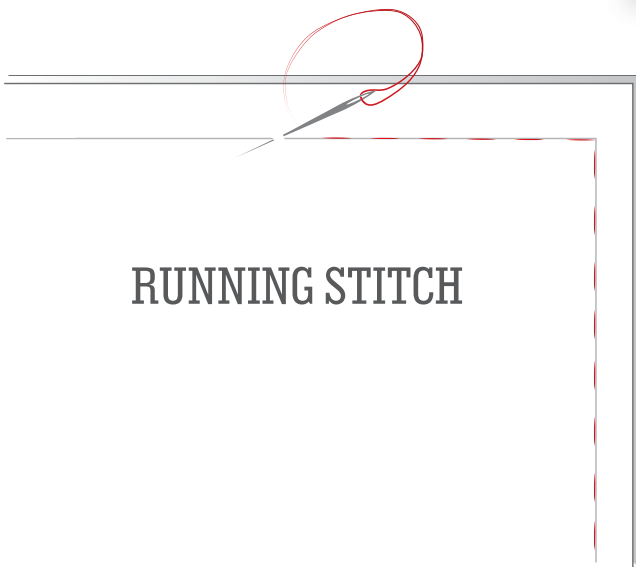


## CRAFTY CAMPER TIP

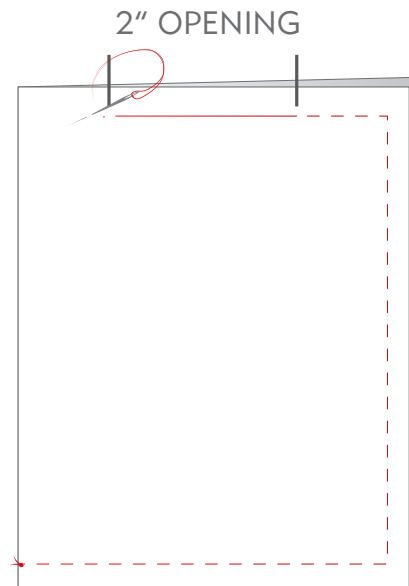
I usually measure out one arm's length of thread and I've found that a double knot will not slip through cotton fabric.

Don't forget that your stitches will need to be smaller than your beans!

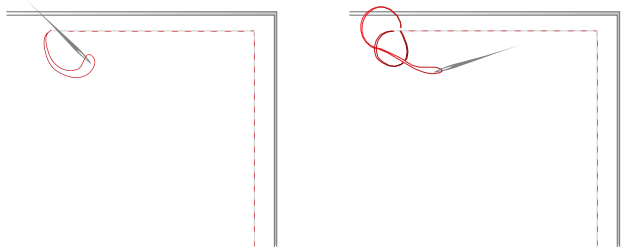
B



C



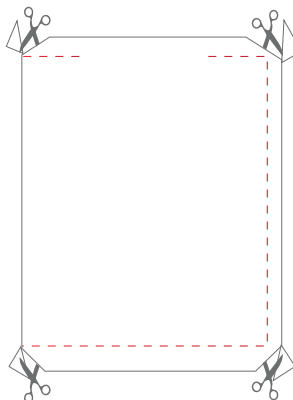
5



When you reach the end of your pencil line you will need to tie a knot to finish your stitching line.

6

Clip the corners of your pouch.



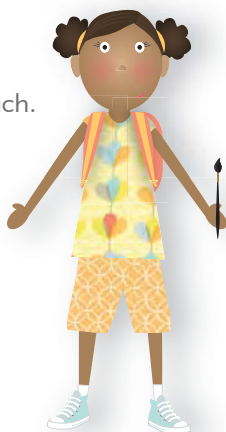
Make sure that you don't clip through your stitching line!

7

Turn your pouch through the 2" opening so the right side of the fabric is on the outside.

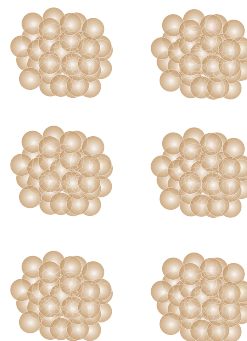
### CRAFTY CAMPER TIP

You can use the wrong end of a paintbrush or a chopstick to gently push out the corners of the pouch.



8

Fill your pouch with beans (or lavender if you're making a sachet) until they are about  $\frac{3}{4}$  full.

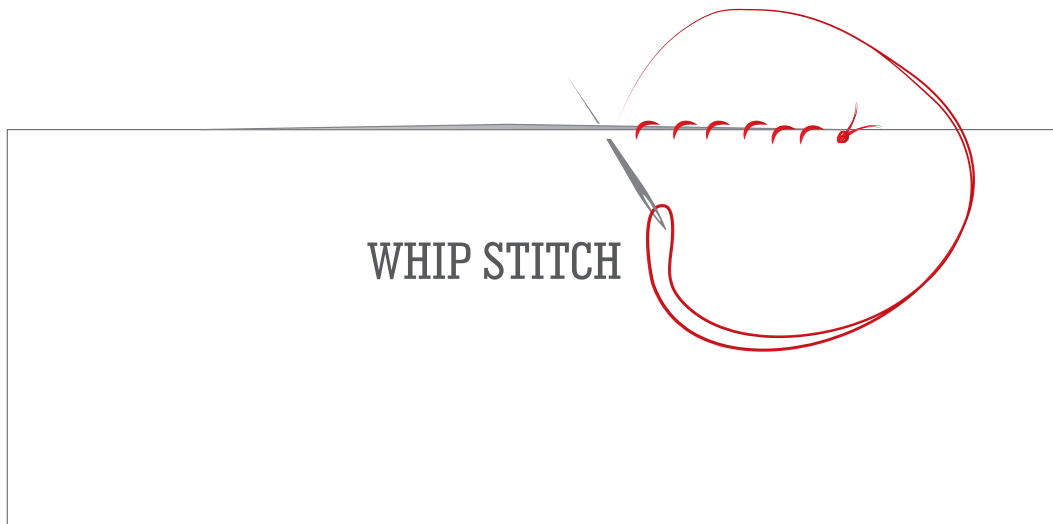


I divided a 16 oz bag of garbanzo beans into six sections. If you're making more than six pouches, you might need two bags of dried beans.

9

Now, you will WHIP STITCH the 2" opening closed. Start by knotting your thread as you did in step 4.

Make sure that you catch both the front and the back layers of your pouch and keep your stitches small so the beans don't slip out. Finish with a knot as you did in step 5.



10

AND, VOILA! You're finished with your first bean bag/sachet!  
Repeat the sewing instructions to complete all of your pouches.

