

Peacock Plume Quilt

From the Seedling Collection
by Thomas Paul - April 2015



Peacock Plume Quilt

Fabric Requirements

Quilt Size:
54" x 63"



DC 6841 CITRON 1 yard
PEACOCK PLUME



DC 6841 PEWTER 1 yard
PEACOCK PLUME



DC 6841 NAVY 1 yard
PEACOCK PLUME



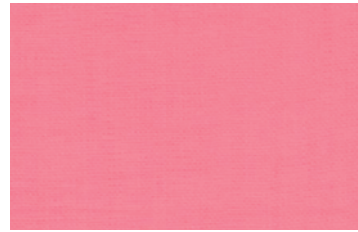
DC 6843 PEWTER 1 yard
LOTUS



SC5333 LIPSTICK 1/4 yard
COTTON COUTURE



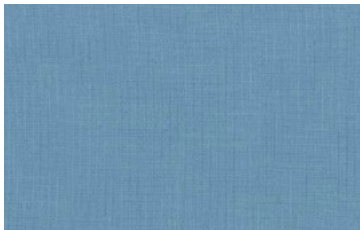
SC5333 SHELL 1/8 yard
COTTON COUTURE



SC5333 BUBBLEGUM 1/8 yard
COTTON COUTURE



SC5333 DENIM 1/8 yard
COTTON COUTURE



SC5333 WEDGEWOOD 1/8 yd
COTTON COUTURE



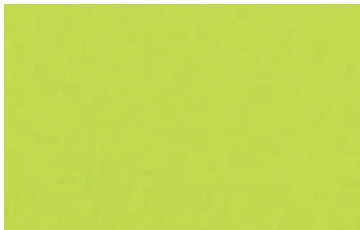
SC5333 POWDER BLUE 1/8yd
COTTON COUTURE



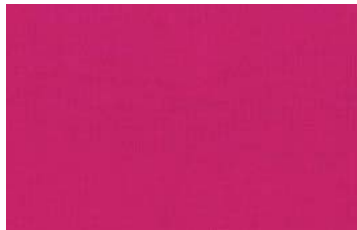
SC5333 AVOCADO 1/8 yard
COTTON COUTURE



SC5333 KRYPTONITE 1/8 yard
COTTON COUTURE



SC5333 LIMEADE 1/8 yard
COTTON COUTURE



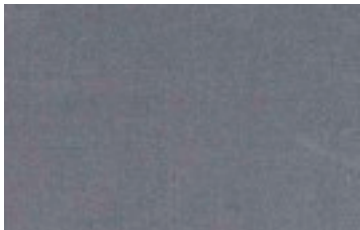
SC5333 FUSCHIA 1/8 yard
COTTON COUTURE



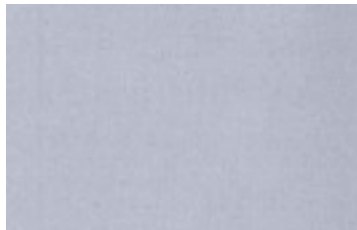
SC5333 BERRY 1/4 yard
COTTON COUTURE



SC5333 PINK 1/8 yard
COTTON COUTURE



SC5333 CLAY 1/8 yard
COTTON COUTURE



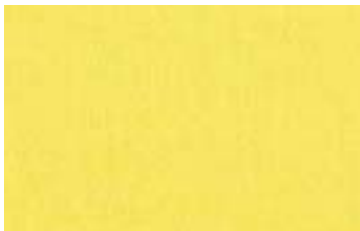
SC5333 OZONE 1/8 yard
COTTON COUTURE



SC5333 GOLD 1/8 yard
COTTON COUTURE



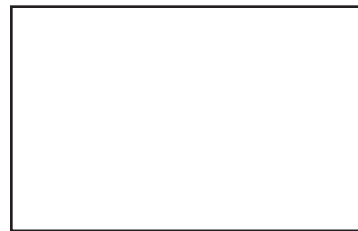
SC5333 STRAW 1/8 yard
COTTON COUTURE



SC5333 CANARY 1/8 yard
COTTON COUTURE



SC5333 STARFRUIT 1/2 yard
COTTON COUTURE
BINDING FABRIC



BACKING FABRIC: 4 yards
(your choice)

Peacock Plume Quilt

Finished Quilt Size: 54" x 63" Skill Level: Beginner

Also Needed:

- 56" x 66" quilt batting.
- A rotary cutter, a long acrylic ruler, cutting mat, thread, scissors, pins, pencil.

All seam allowances are ¼".

Cutting Instructions:

DC 6841 COTTON COUTURE - STARFRUIT - Cut 6 strips 2¼" x WOF. Set aside for binding.

Backing fabric - Cut and piece together to make a piece measuring 58" x 68".
Press seams open. Set aside.

DC 6841 PEACOCK PLUME (all colors) - Fussy cut (9) 6" x 12" rectangles each, always centering on a feather (See **fig.1**)
Subcut these rectangles into four equal smaller rectangles (3" x 6") (pink lines in **fig.1**)

DC 6843 PEWTER - LOTUS

SC5333 POWDER BLUE

SC5333 CANARY

SC5333 PINK

SC5333 LIPSTICK & BERRY

- Each color: Cut (2) strips 1½" x WOF (width of fabric). Sew short ends of 2 pieces together. Press seam open. Cut to 54" length. Set aside for sashing. Subcut remainder into 6" lengths.

SC5333 PINK, FUSCHIA, LIMEADE, KRYPTONITE, AVOCADO, POWDER BLUE, WEDGEWOOD, MIDNIGHT, BUBBLEGUM, SHELL, CANARY, STRAW, GOLD, SOFT WHITE, FOG, CLAY - Cut (1) strip 1½" x WOF (width of fabric). Subcut into 6" lengths.



fig.1

Quilt Layout:

Lay the quilt top out as in the quilt photo. For piecing, think of the top as divided into 3 horizontal sections, divided by the 2 bands of sashing.

Piecing Quilt Top:

Work one section at a time, referring to **fig. 2**. First sew together the peacock feather blocks. Press seams open. Sew each peacock block to the square / squares above and / or below it. Press seams open. Sew these vertical columns together, keeping them in the correct order. Press seams open.

Repeat for the next two sections.

Pin the sashing to the top / bottom edges of the adjacent sections. Sew together to form quilt top. Press seams open.

Assembling Quilt:

Layer backing, batting and quilt top. Baste or pin.

Quilt as desired.

Square up quilt top.

Join binding strips together and bind in your preferred fashion.

