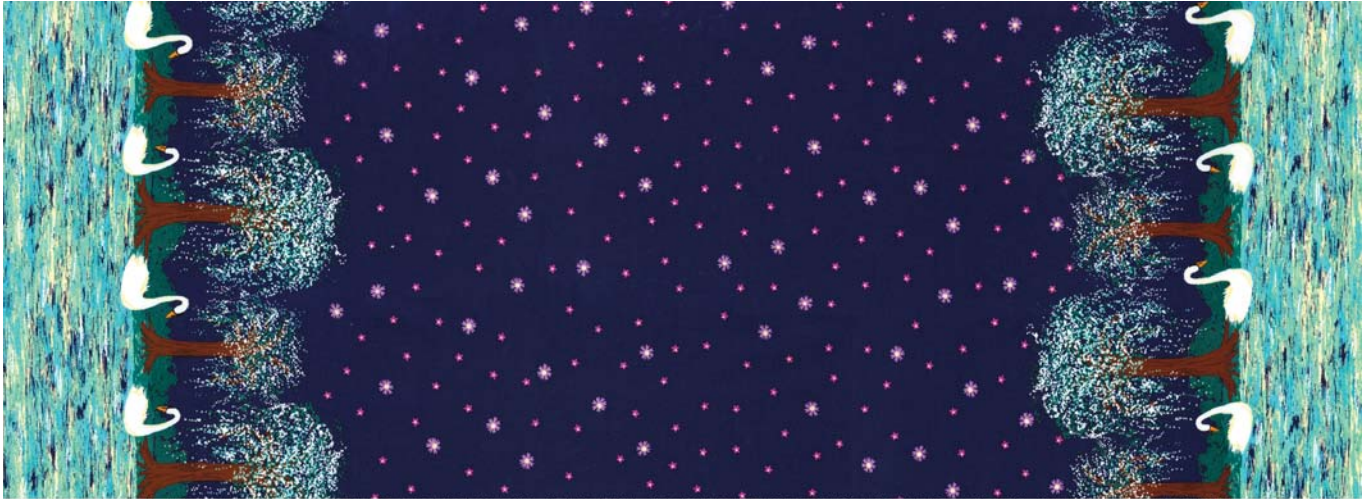


# SWAN LAKE





# FABRIC REQUIREMENTS



**CX6794\_MIDNITE**  
SWAN LAKE  
1/2 YARD



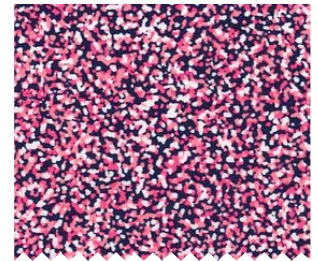
**CX6943\_MIDNITE**  
SWANS A SWIMMING  
1/3 YARD



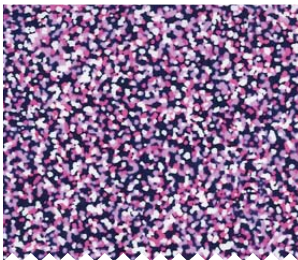
**CX6942\_MIDNITE**  
BITTY BOUQUET  
1/2 YARD



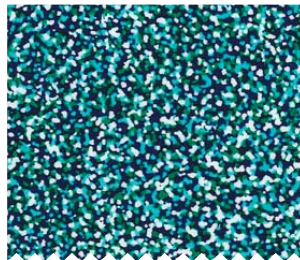
**CX6941\_MIDNITE**  
BITTY FLORAL  
2/3 YARD  
2 3/4 YARDS (BACKING)



**CX6944\_PINK**  
BITTY DOTS  
3/8 YARDS



**CX6944\_LAVENDER**  
BITTY DOTS  
1/4YARDS



**CX6944\_LUNA**  
BITTY DOTS  
1/4YARDS



**SC5333\_BRIGHT WHITE**  
COTTON COUTURE  
3/4 YARD

## "Swan Lake"

Quilt by Heidi Pridemore

Size: Approximately 37" x 41" Skill Level: Advanced Beginner

### Materials

#### Cutting instructions

**Please Note: All strips are cut across the width of fabric (WOF) from selvage to selvage edge unless otherwise noted.**

	Fabric	Yardage	Cutting
(A)	CX6794-Midnight Swan Lake – Midnight	½ yard	• Cut one 14 ½" x WOF strip. Sub-cut one 14 ½" x 18 ½" strip.
(B)	CX6944-Lavender Bitty Dots – Lavender	¼ yard	• Cut one 1 ½" x WOF strip. Sub-cut two 1 ½" x 18 ½" strips. • Cut one 1 ½" x WOF strip. Sub-cut two 1 ½" x 16 ½" strips.
(C)	CX6943-Midnight Swans A Swimming – Midnight	⅓ yard	• Cut two 4 ½" x WOF strips. Sub-cut the strips into eleven 4 ½" squares.
(D)	CX6942-Midnight Bitty Bouquet – Midnight	½ yard	• Fussy cut eleven 4 ½" squares, each centered on a bouquet.
(E)	CX6944-Luna Bitty Dots – Luna	¼ yard	• Cut two 1 ½" x 28 ½" WOF strips. • Cut two 1 ½" x 26 ½" WOF strips.
(F)	CX6941-Midnight Bitty Floral – Midnight	⅔ yard	• Cut two 4 ½" x 37 ½" WOF strips. • Cut two 4 ½" x 33 ½" WOF strips.
(G)	CX6944-Pink Bitty Dots – Pink	⅜ yard	• Cut four 2 ½" x WOF strips for the binding.
(H)	SC5333-Bright White Cotton Couture – Bright White	¾ yard	• Cut six 2 ½" x WOF strips. Sub-cut the strips into eighty-eight 2 ½" squares. • Cut two 2" x 30 ½" WOF strips. • Cut two 2" x 29 ½" WOF strips.
Backing	CX6941-Midnight Bitty Floral – Midnight	2 ¾ yards	• Cut two 45" x WOF strips. Piece the strips together and trim to make the 45" x 49" pieced backing.

#### **You will also need:**

- 45" x 49" batting, threads to match, scissors, straight pins, acrylic ruler, rotary cutter and mat.

## Disclaimers

This pattern is provided as a courtesy to quilt stores, catalogs and quilters. Michael Miller Fabrics, LLC is not responsible for the accuracy of any kits packaged to accompany this pattern. Please direct any inquiries to the kit maker.

Yardage requirements for this pattern may allow for excess yardage to accommodate specific placement of motifs or to allow for any fussy-cutting to achieve the finished quilt design.

While every attempt has been made to give accurate measurements, yardage requirements and construction directions; this does not allow personal variations in measuring, cutting or sewing. The enclosed directions were used in the construction of the original quilt.

## Block Assembly

1. Place one 2 ½" Fabric H square on the top left corner of one 4 ½" Fabric C square, right sides together (Fig. 1). Sew across the diagonal of the smaller square from the upper right corner to the lower left corner (Fig. 1). Flip open the triangle formed and press (Fig. 2). Trim away the excess fabric from behind the triangle ¼" away from the sewn seam.

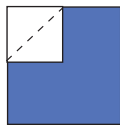


Fig. 1

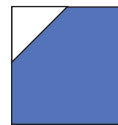


Fig. 2

2. Follow Figure 3 for the seam direction to add a 2 ½" Fabric H square to each of the remaining corners of the 4 ½" Fabric C square to make one C-block (Fig. 4).

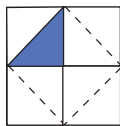


Fig. 3

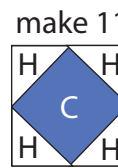


Fig. 4

3. Repeat Steps 1-2 to make eleven C-blocks total.
4. Repeat Steps 1-2 using eleven 4 ½" Fabric D squares and forty-four 2 ½" Fabric H squares to make eleven D-blocks (Fig. 5).



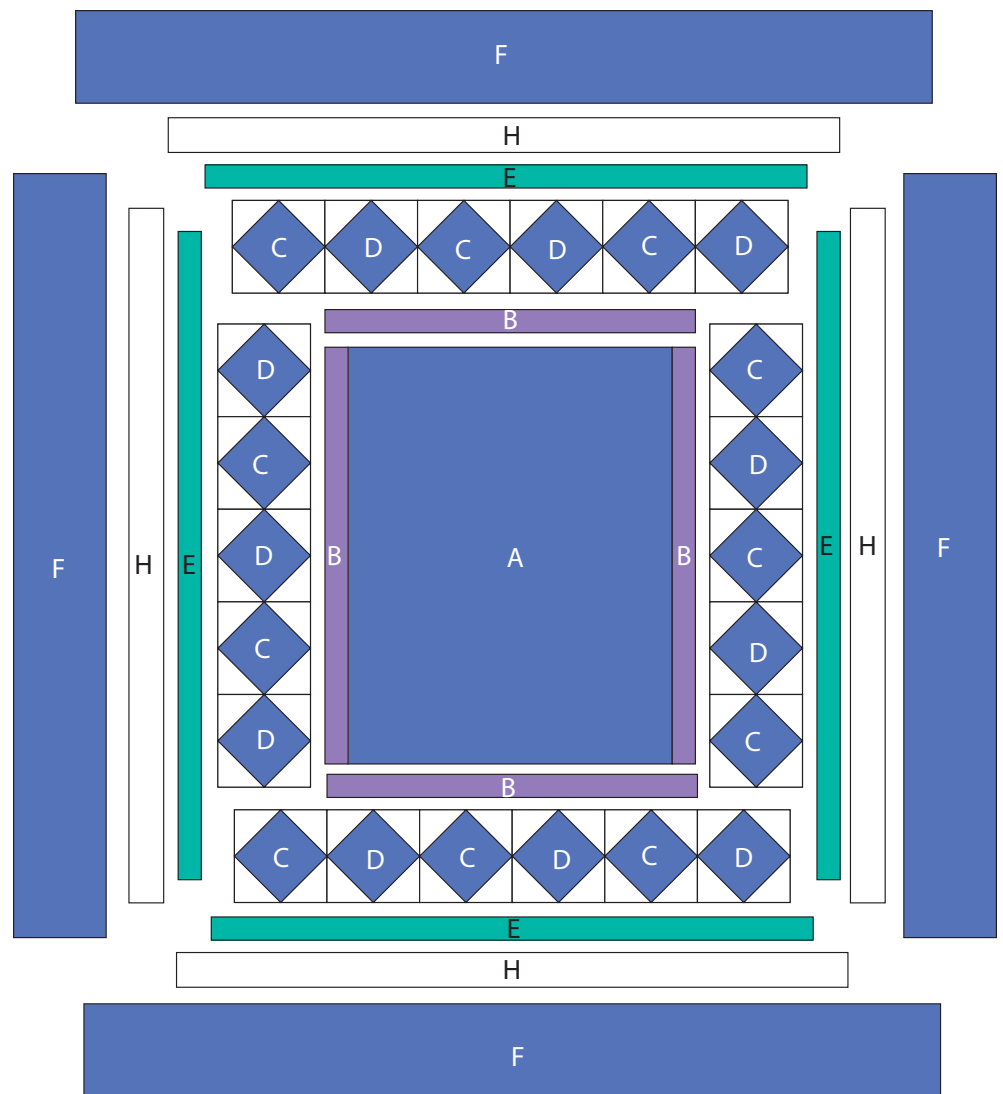
Fig. 5

## Quilt Top Assembly

*(Follow Quilt Layout while assembling the quilt top.)*

5. Sew one 1 ½" x 18 ½" Fabric B strip to each side of the 14 ½" x 18 ½" Fabric A strip. Sew one 1 ½" x 16 ½" Fabric B strip to the top and to the bottom of the Fabric A strip to make the center block.
6. Sew three D-blocks and two C-blocks together, alternating them, to make one strip. Sew this strip to the left side of the center block.

7. Sew three C-blocks and two D-blocks together, alternating them, to make one strip. Sew this strip to the right side of the center block.
8. Sew three C-blocks and three D-blocks together, alternating them, to make one strip. Repeat to make a second strip. Sew the strips to the top and to the bottom of the center block to make the quilt top.
9. Sew one 1 1/2" x 28 1/2" Fabric E strip to each side of the quilt top. Sew one 1 1/2" x 26 1/2" Fabric E strip to the top and to the bottom of the quilt top.
10. Sew one 2" x 30 1/2" Fabric H strip to each side of the quilt top. Sew one 2" x 29 1/2" Fabric H strip to the top and to the bottom of the quilt top.
11. Sew one 4 1/2" x 33 1/2" Fabric F strip to each side of the quilt top. Sew one 4 1/2" x 37 1/2" Fabric H strip to the top and to the bottom of the quilt top.
12. Layer and quilt as desired.
13. Sew the four 2 1/2" x WOF Fabric G strips together, end-to-end with 45-degree seams, to make the binding. Fold this long strip in half lengthwise with wrong sides together and press.
14. Bind as desired.



Quilt Layout