

URBAN STAR



LEVEL: CONFIDENT BEGINNER | SIZE: 45" W X 63" H | QUILT DESIGNED BY MARINDA STEWART

FABRIC REQUIREMENTS

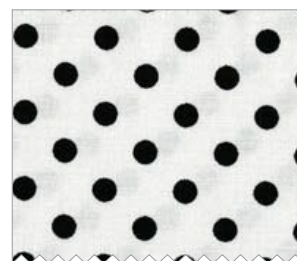
50" X 70" BACKING, 50" X 70" BATTING



CX6555 Black
Petite Hearts
1/6 yard



SC5333 Bright White
Cotton Couture
3/8 yard



CX2490 Ebony
Dumb Dot Fat
3/8 yard



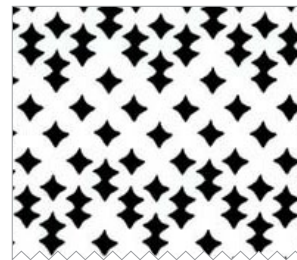
CX6556 Black
Petite Fleur de Lis
3/8 yard



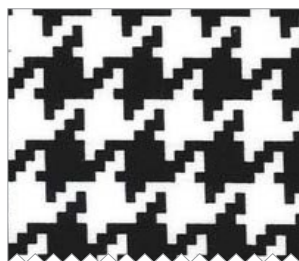
CX6555 Ebony
Petite Hearts
3/8 yard



CX6554 Black
Petite Paris
3/8 yard



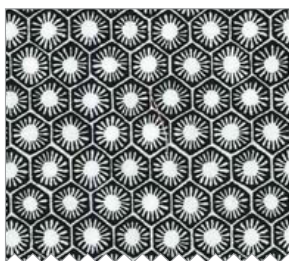
DC6210 Black
North Star
1/2 yard



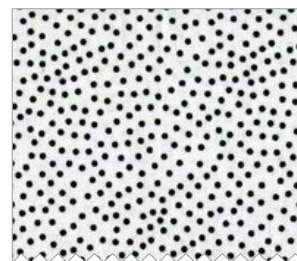
CX6363 Black
Everyday Houndstooth
1/6 yard



CX6554 Ebony
Petite Paris
3/8 yard



DC6512 Black
Sun Tiles
3/8 yard



CX1065 Dalmatian
Garden Pindot
3/8 yard



CX6557 Black
Petite Dandy Damask
3/8 yard



CX6556 Ebony
Petite Fleur de Lis
1/2 yard



CX5514 Black
Pinhead
1/2 yard



SC5333 Sun
Cotton Couture
8" Square



SC5333 Acid
Cotton Couture
8" square



SC5333 Princess
Cotton Couture
8" square



SC5333 Tangerine
Cotton Couture
8" square



SC5333 Caribbean
Cotton Couture
8" square

"Urban Star"

Quilt by Marinda Stewart

Size: Approximately 45" x 63" Skill Level : Confident Beginner

Materials

Fabric	Yardage	Cutting
SC5333 Bright White Cotton Couture	3/8 yard	(35) 3 1/2" squares
'A' CX6555 Black Petite Hearts	1/6 yard	(36) 1 1/2" x 3 1/2"
'A' CX2490 Ebony Dumb Dot	3/8 yard	(36) 1 1/2" x 5 1/2"
'A' CX6556 Black Petite Fleur de Lis	3/8 yard	(36) 1 1/2" x 5 1/2"
'A' CX6555 Ebony Petite Hearts	3/8 yard	(36) 1 1/2" x 7 1/2"
'A' CX6554 Black Petite Paris	3/8 yard	(36) 1 1/2" x 7 1/2"
'A' DC6210 Black North Star	1/2 yard	(36) 1 1/2" x 9 1/2"
'B' CX6363 Black Everyday Houndstooth	1/6 yard	(34) 1 1/2" x 3 1/2"
'B' CX6554 Ebony Petite Paris	3/8 yard	(34) 1 1/2" x 5 1/2"
'B' DC6512 Black Sun Tiles	3/8 yard	(34) 1 1/2" x 5 1/2"

Materials

Fabric	Yardage	Cutting
'B' CX1065 Dalmatian Garden Pindot	3/8 yard	(34) 1 1/2" x 7 1/2"
'B' CX6557 Black Petite Dandy Damask	3/8 yard	(34) 1 1/2" x 7 1/2"
'B' CX6556 Ebony Petite Fleur de Lis	1/2 yard	(34) 1 1/2" x 9 1/2"
CX5514 Black Pinhead	1/2 yard	(6) 2 1/2" x W.O.F. - binding
SC5333 Sun Cotton Couture	8" square each	(7) stars each (see pattern)
SC5333 Acid Cotton Couture		
SC5333 Princess Cotton Couture		
SC5333 Tangerine Cotton Couture		
SC5333 Caribbean Cotton Couture		
Also Needed: 50" x 70" backing, 50" x 70" batting, thread to match, scissors, straight pins, rotary cutter, acrylic ruler, mat and fusible web.		
OPTIONAL: (but recommended) Iron-on tear-away stabilizer		

Disclaimers

This pattern is provided as a courtesy to quilt stores, catalogs, and quilters. Michael Miller Fabrics, LLC is not responsible for the accuracy of any kits packaged to accompany this pattern. Please direct any inquiries to the kit maker.

Yardage requirements for this pattern may allow for excess yardage to accommodate specific placement of motifs or to allow for any fussy-cutting to achieve the finished quilt design.

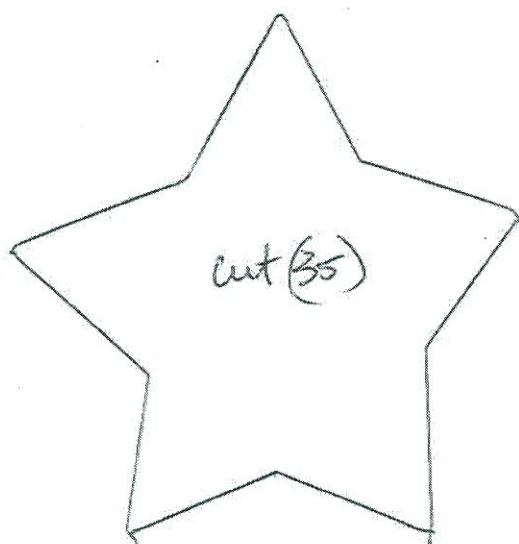
While every attempt has been made to give accurate measurements, yardage requirements, and construction directions; this does not allow personal variations in measuring, cutting, and or sewing. The enclosed directions were used in the construction of the original quilt.

Directions:

1. For Block 'A' - Sew CX6555 Black 1 1/2" x 3 1/2" piece to each side of one SC5333 White 3 1/2" square. Sew one CX2490 1 1/2" x 5 1/2" piece to the top and bottom. Sew one CX6556 Black 1 1/2" x 5 1/2" piece to each side. Sew one CX6556 Ebony 1 1/2" x 7 1/2" piece to the top and bottom. Sew one CX6554 Black 1 1/2" x 7 1/2" to each side. Sew one DC6210 1 1/2" x 9 1/2" piece to the top and bottom. Make (18) blocks total. Set aside.
2. For Block 'B' - Sew one CX6363 1 1/2" x 3 1/2" piece to the top and bottom of one SC5333 White 3 1/2" square. Sew one CX6554 Ebony 1 1/2" x 5 1/2" piece to each side. Sew one DC6512 1 1/2" x 5 1/2" piece to the top and bottom. Sew one CX1065 1 1/2" x 7 1/2" piece to each side. Sew one CX6557 1 1/2" x 7 1/2" piece to the top and bottom. Sew one CX6556 Ebony 1 1/2" x 9 1/2" piece to each side. Make (17) blocks total. Set aside.
3. Following manufacturer's directions, trace (35) stars onto the paper side of the fusible web. Rough cut out. Iron (7) stars on the wrong side of each 8" square of SC5333 (Sun, Acid, Caribbean, Princess, and Tangerine). Cut out on the pattern lines. Remove paper backing. Iron one star in the center square of each completed 8 1/2" block. Machine satin stitch all raw edges to finish.
OPTIONAL: (but recommended) Iron iron-on tear-away stabilizer on the back of each block before appliqueing the star. Stitch the raw edges. Remove all traces of stabilizer after stitching. Stabilizer improves stitch quality and eliminates distortion caused by stitching. Make (35) blocks total.
4. Row #1, #3, #5, and #7 - Begin and end with Block 'A' and alternate with Block 'B' using (5) blocks in each row.
5. Row #2, #4, and #6 - Begin and end with Block 'B' and alternate with Block 'A'. Randomly scatter the colored stars as shown.
6. Assemble the quilt top in rows by numerical order.
7. Layer backing, batting, and quilt top. Baste.
8. Quilt as desired.
9. Bind quilt using CX5514 2 1/2" strips pieced as needed for length.

"Urban Stars"

PATTERN



* Marina © 2014