

# Cobblestone Quilt



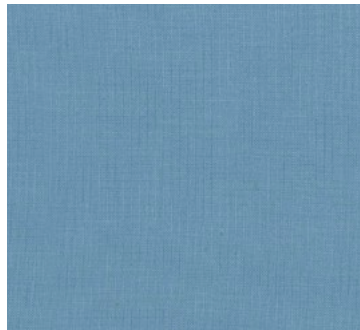


# Cobblestone Quilt

## Fabric Requirements



**SC5333** POWDER BLUE  
COTTON COUTURE  
1/4 yard



**SC5333** WEDGEWOOD  
COTTON COUTURE  
1/2 yard



**SC5333** TEAL  
COTTON COUTURE  
1/4 yard



**SC5333** KHAKI  
COTTON COUTURE  
1/4 yard



**SC5333** BLOSSOM  
COTTON COUTURE  
1/4 yard



**SC5333** MAUVE  
COTTON COUTURE  
1/2 yard



**SC5333** VENUS  
COTTON COUTURE  
1/2 yard



**SC5333** EGGPLANT  
COTTON COUTURE  
1/4 yard



**SC5333** STRAW  
COTTON COUTURE  
1/2 yard



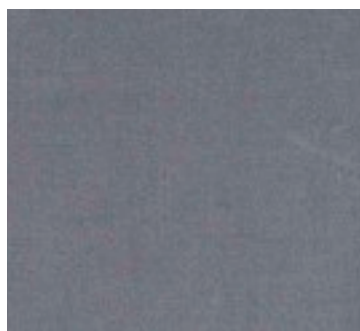
**SC5333** ACID  
COTTON COUTURE  
1/4 yard



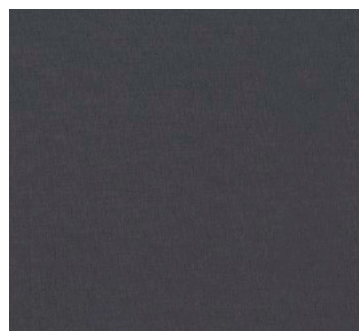
**SC5333** GOLD  
COTTON COUTURE  
1/4 yard + **BINDING:** 1/2 yard



**SC5333** FOG  
COTTON COUTURE  
1/4 yard



**SC5333** CLAY  
COTTON COUTURE  
1/4 yard



**SC5333** CHARCOAL  
COTTON COUTURE  
1/4 yard



**BACKING FABRIC:** 50" x 58"  
OF YOUR CHOICE

# Cobblestone Quilt

Finished Quilt Size: 46" x 54" Skill Level: Beginner

## Cutting Instructions:

**GOLD** - Cut 5 strips 2¼" x WOF. Set aside for binding.

**All fabrics** - Cut 1 strip 5½" x width of fabric (WOF). Cut the appropriate numbers of 5½" squares, then rectangles, then 2" squares from each fabric, as indicated below. If necessary, cut another 5½" strip.

- Retain scraps for a small amount of further cutting later.

<b>FABRIC</b>	<b>CUT 5½"</b> <b>SQUARES</b>	<b>CUT 2" x 5½"</b> <b>RECTANGLES</b>	<b>CUT 2"</b> <b>SQUARES</b>
POWDER BLUE	5	2	25
WEDGEWOOD	9	8	
TEAL	4	10	
KHAKI	7	2	
BLOSSOM	6		30
MAUVE	6	11	
VENUS	8	10	
EGGPLANT	2	16	
STRAW	9	8	16
ACID		12	
GOLD	4	10	
FOG	7	2	
CLAY	3	14	
CHARCOAL	2	15	

# Cobblestone Quilt

## Also Needed:

- 50" x 58" quilt batting.
- A rotary cutter, a long acrylic ruler, cutting mat, thread, scissors, pins, pencil.

All seam allowances are  $\frac{1}{4}$ ".

## Quilt Layout:

Lay your squares and rectangles out as indicated in **fig 1**.

Here are a few tips for arranging color (or you can refer to the quilt photo):

- Try to avoid having 2 pieces of the same colour repeat too close to each other.
- Intersperse the 2 lightest colored large squares (BLOSSOM & POWDER BLUE) evenly throughout. Work similarly with the darkest colors (EGGPLANT, TEAL & CHARCOAL).

## Making 9 Special Squares:

Once you are happy with the arrangement, choose 9 large squares to highlight (can include ones along the edges) that are relatively evenly spaced. For each of these squares, choose a second fabric from your scraps that is either a value lighter or darker than your square fabric (ex. If your square is in VENUS, you can choose a secondary fabric of either MAUVE or EGGPLANT). Cut a 2" square of each of the 9 secondary fabrics you have chosen.

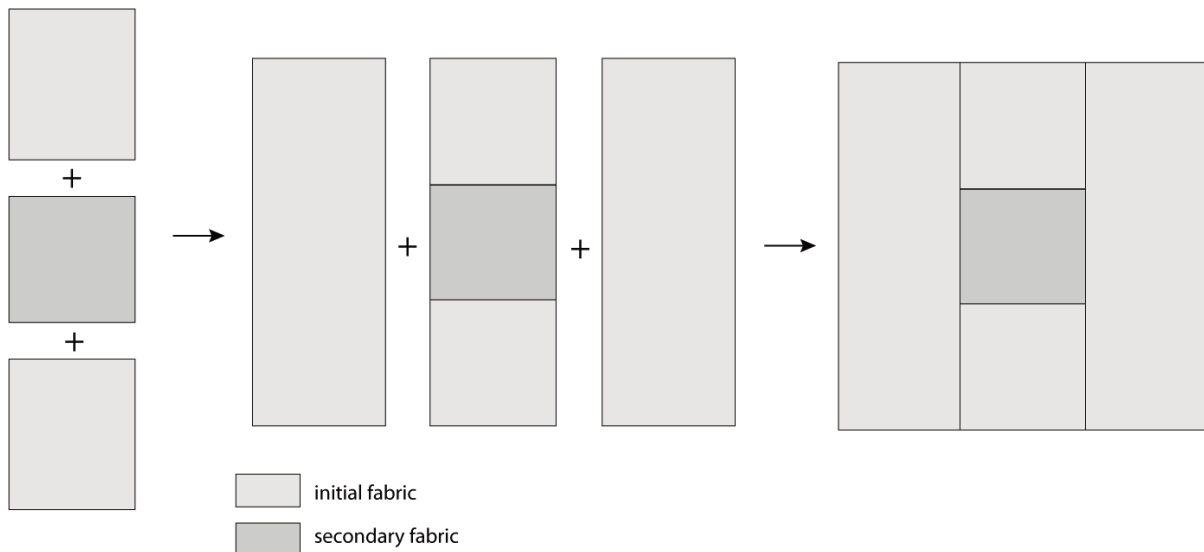
Now cut the 9 initial large squares: From each of the squares, cut 2 rectangles  $2\frac{1}{4}$ " wide. Discard the remaining strip.

From your scraps, cut 2 pieces each  $2\frac{1}{4}$ " x 2" from the same fabric.

For each square you should now have:

- OF INITIAL FABRIC: 2 pieces  $2\frac{1}{4}$ " x  $5\frac{1}{2}$ "; 2 pieces  $2\frac{1}{4}$ " x 2".
- OF SECONDARY FABRIC (a value lighter or darker than initial fabric): 1 piece 2" square.

Piece these together as indicated in the following diagram, pressing seams open. Place them back into their original positions in the quilt layout.



## Piecing Quilt Top:

Sew squares & rectangles together in diagonal rows, pressing all seams open. Sew these rows together, matching seam lines and corners. Refer to **fig. 1**

Square up quilt top by cutting  $\frac{1}{4}$ " beyond the corners as indicated by the red lines in **fig 1**.

## Assembling Quilt:

Layer backing, batting and quilt top. Baste or pin.

Quilt as desired.

Join binding strips together and bind in your preferred fashion.

# Cobblestone Quilt

Fig 1

