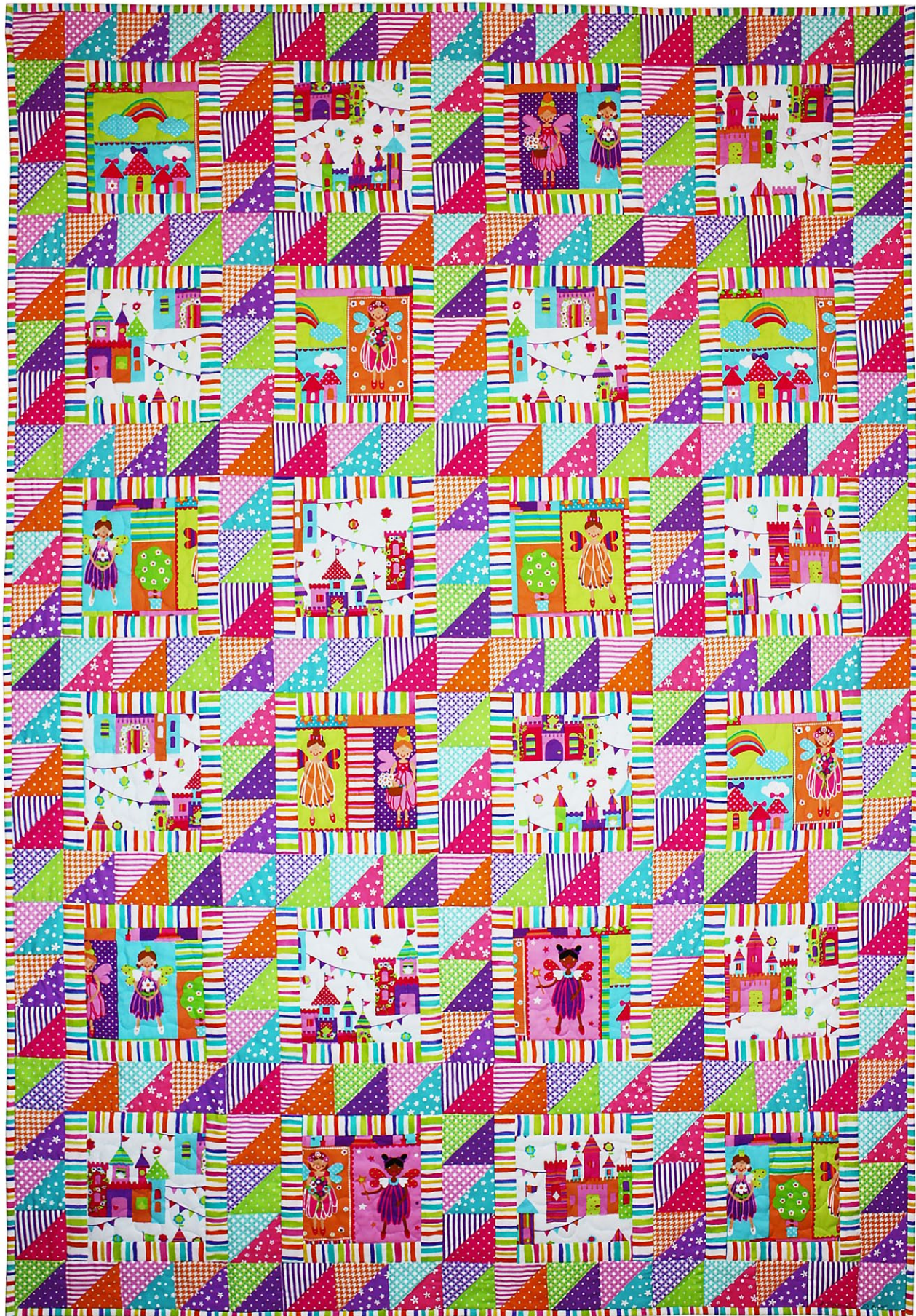


PRINCESSES AND CASTLES



LEVEL: CONFIDENT BEGINNER | SIZE: 42 1/2" W X 62 1/2" H | QUILT DESIGNED BY MARINDA STEWART

FABRIC REQUIREMENTS

46" X 66" BACKING AND BATTING



CX6738 Brite
Fairy Squares
3/8 yard



CX6736 Brite
Castle Town
3/8 yard



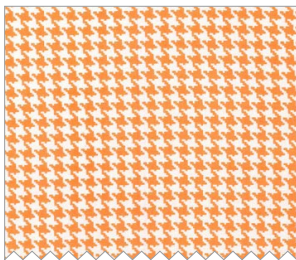
CX6544 Spring
Color Stripe
1 1/8 yards



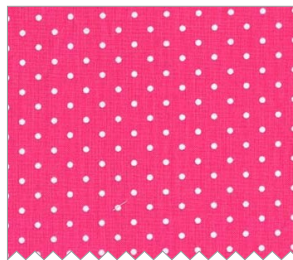
CX6566 Turquoise
Princess Blossom
12" x 19" piece



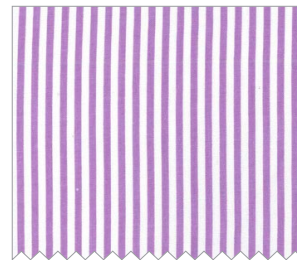
CX6566 Lavender
Princess Blossoms
12" x 19" piece



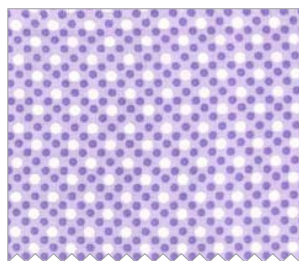
CX4835 Apricot
Tiny Houndstooth
12" x 19" piece



CX5514 Princess
Pinhead
12" x 19" piece



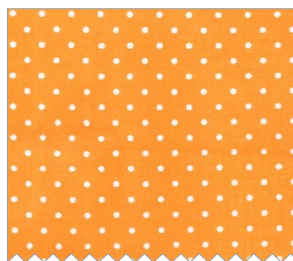
CX6574 Purple
Little Stripes
12" x 19" piece



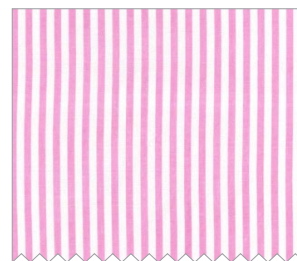
CX6322 Opal
Dim Dots
12" x 19" piece



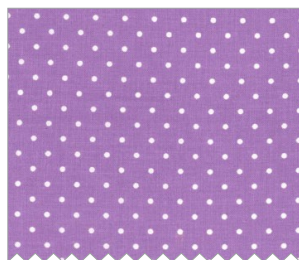
CX5514 Garden
Pinhead
12" x 19" piece



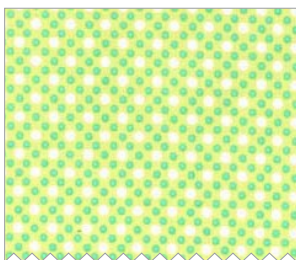
CX5514 Apricot
Pinhead
12" x 19" piece



CX6574 Pink
Little Stripes
12" x 19" piece



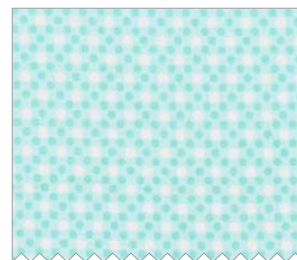
CX5514 Purple
Pinhead
12" x 19" piece



CX6322 Limeade
Dim Dots
12" x 19" piece



CX6566 Bubblegum
Princess Blossoms
12" x 19" piece



CX6322 Aqua
Dim Dots
12" x 19" piece



CX6322 Flower
Dim Dots
12" x 19" piece

"Princesses and Castles"

Quilt by Marinda Stewart

Size: Approximately 42 1/2" W x 62 1/2" H - Skill Level : Confident Beginner

Materials

Fabric	Yardage	Cutting	
CX6738 Brite Fairy Squares	3/8 yard	(12) 6" squares	
CX6736 Brite Unicorn Town	3/8 yard	(12) 6" squares	
CX6544 Spring Color Strips	1 1/8 yard	(48) 1 1/2" x 6" (48) 1 1/2" x 8"	(5) 2 1/2" x W.O.F.
CX6566 Lavender Princess Blossoms Combo #1	12" x 19" piece *	(15) 3 1/2" squares each color	
CX4835 Apricot Tiny Houndstooth Combo #1			
CX5514 Princess Pinhead Combo #2			
CX6574 Purple Little Stripes Combo #2			
CX6322 Flower Dim Dots Combo #3			
CX6566 Turquoise Princess Blossom Combo #3			
CX6322 Opal Dim Dots Combo #4			
CX5514 Garden Pinhead Combo #4			
CX5514 Apricot Pinhead Combo #5			
CX6574 Pink Little Stripes Combo #5			
CX5514 Purple Pinhead Combo #6			
CX6322 Limeade Dim Dots Combo #6			
CX6566 Bubblegum Princess Blossoms Combo #7			
CX6322 Aqua Dim Dots Combo #7			
Also Needed: 46" x 66" backing, 46" x 66" batting, scissors, straight pins, rotary cutter, acrylic ruler, mat, and threads to match.			
* or (1) Fat Quarter each color			

Disclaimers

This pattern is provided as a courtesy to quilt stores, catalogs, and quilters. Michael Miller Fabrics, LLC is not responsible for the accuracy of any kits packaged to accompany this pattern. Please direct any inquiries to the kit maker.

Yardage requirements for this pattern may allow for excess yardage to accommodate specific placement of motifs or to allow for any fussy-cutting to achieve the finished quilt design.

While every attempt has been made to give accurate measurements, yardage requirements, and construction directions; this does not allow personal variations in measuring, cutting, and or sewing. The enclosed directions were used in the construction of the original quilt.

Directions:

1. To make (1) right square triangle - place (2) different 3 1/2" squares right sides together. Draw a diagonal line from corner to corner. Sew 1/4" on each side of the diagonal line. Cut apart. Press open. Yield - (2) right square triangles. Trim each to an accurate 3" square. Make (30) right square triangles from each 2-color combination.

Combination

- #1 - CX6566 Lavender + CX4835 Apricot
- #2 - CX5514 Princess + CX6574 Purple
- #3 - CX6322 Flower + CX6566 Turquoise
- #4 - CX6322 Opal + CX5514 Garden
- #5 - CX5514 Apricot + CX6574 Pink
- #6 - CX5514 Purple + CX6322 Limeade
- #7 - CX6566 Bubblegum + CX6322 Aqua

Set blocks aside to be used for sashing (210 blocks total).

2. For large blocks sew one CX6544 1 1/2" x 5 1/2" piece to the top and bottom of the CX6738 and CX6736 5 1/2" squares - (24) total. Sew one CX6544 1 1/2" x 8" piece to each side of the 5 1/2" squares. Set aside.
3. To assemble sashing sew together (17) right square triangles into a row measuring 42 1/2". Make (7) rows. Sew together (3) right square triangles into a vertical strip to measure 7 1/2". Make (30) pieces. One block is left over.
4. For Rows 1, 3, and 5 - begin and end with a 3-piece sashing strip and alternate with (2) CX6738 blocks and (2) CX6736 blocks. For Rows 2, 4, and 6 - begin and end with a 3-piece sashing strip and alternate with (2) CX6738 blocks and (2) CX6736 blocks. Alternate the position of the large blocks in each row to create a checkerboard pattern.
5. To assemble the quilt top, begin and end with a 17-piece row and add rows in numerical order maintaining the checkerboard design.
6. Layer backing, batting, and quilt top. Baste.
7. Quilt as desired.
8. Bind quilt using CX6544 2 1/2" strips pieced as needed for length.