

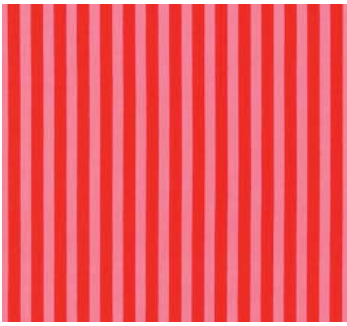
# CUPID'S ARROW QUILT





# Cupid's Arrow Quilt

## Fabric Requirements



**CX3584** POPPY  
CLOWN STRIPE  
1/2 yard



**CX6708** POPPY  
HEART O MINE  
1/4 yard



**CX5193** PINK  
HEART STRINGS  
1/2 yard



**CX6561** BLOOM  
CHERRY DOT  
1/2 yard



**CX6561** MINT  
CHERRY DOT  
1/4 yard



**CX6708** MINT  
HEART O MINE  
1/8 yard



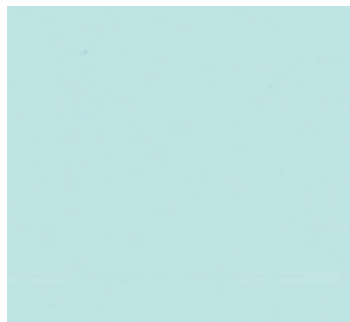
**CX6707** POPPY  
SWIRLY HEARTS  
1/4 yard



**CX6734** RED  
HELLO SUNSHINE  
1/2 yard



**SC5333** PINK  
COTTON COUTURE  
1/2 yard + **BINDING** 1/2 yard



**SC5333** SPA  
COTTON COUTURE  
1/4 yard



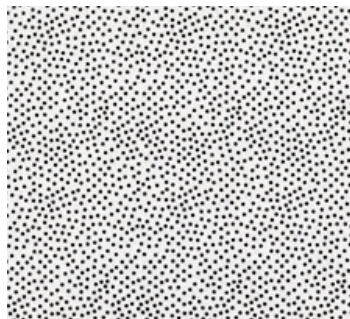
**SC5333** CHERRY  
COTTON COUTURE  
1/8 yard



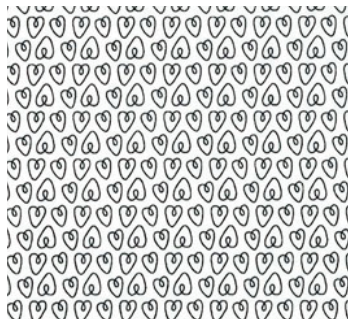
**PC6743** FLAMINGO  
LOVE HEART  
**BACKING FABRIC:** 1 1/2 yards



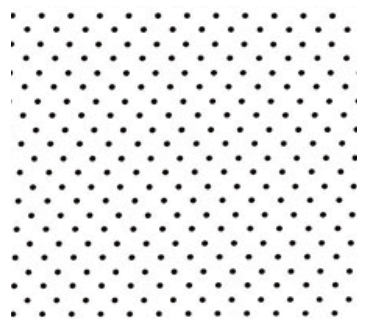
**DC6186** WHITE  
FRECKLED  
1/2 yard



**CX1065** DALMATIAN  
GARDEN PINDOT  
1/2 yard



**CX6555** EBONY  
PETITE HEARTS  
1/2 yard



**CX5514** EBONY  
PINHEAD  
1/2 yard

# Cupid's Arrow Quilt

## Cutting Instructions:

- SC5333 COTTON COUTURE - PINK

- All Ground Fabrics  
(4 black & white prints)
- Cut 5 strips 2¼" x WOF (width of fabric). Set aside for binding.

- Cut 3 strips 3½" x WOF. Set aside for sashing.

- Cut 1 strip 6½" x WOF.

- Cut 2 x 3½" squares.

Cut fabrics as indicated in the following chart. Other pieces needed will be cut from remaining fabric

FABRIC	CUT 1½" STRIPS x WOF	CUT 2½" STRIPS x WOF	CUT 3½" STRIPS x WOF	CUT 4" SQUARES	CUT 5" SQUARES
CX6561 MINT CHERRY DOT	2	1		4	
CX6707 POPPY SWIRLY HEARTS	1	1		5	
CX3584 POPPY CLOWN STRIPE	2	1		6	1
CX6708 POPPY HEART O MINE	1			3	1
CX6561 BLOM CHERRY DOT	1		1	4	1
SC5333 CHERRY COTTON COUTURE				4	
CX5193 PINK HEART STRINGS		1	1	4	
CX6734 RED HELLO SUNSHINE	1		1	5	1
SC5333 PINK COTTON COUTURE	2			3	
SC5333 SPA COTTON COUTURE	2			2	
CX6708 MINT HEART O MINE				2	
DC6186 WHITE FRECKLED				4	1
CX1065 DALMATIAN GARDEN PINDOT				4	1
CX6555 EBONY PETITE HEARTS				4	1
CX5514 EBONY PINHEAD				4	1

# Cupid's Arrow Quilt

Finished Quilt Size: 43" x 54"     Skill Level: Beginner - Intermediate

## Also Needed:

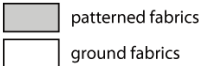
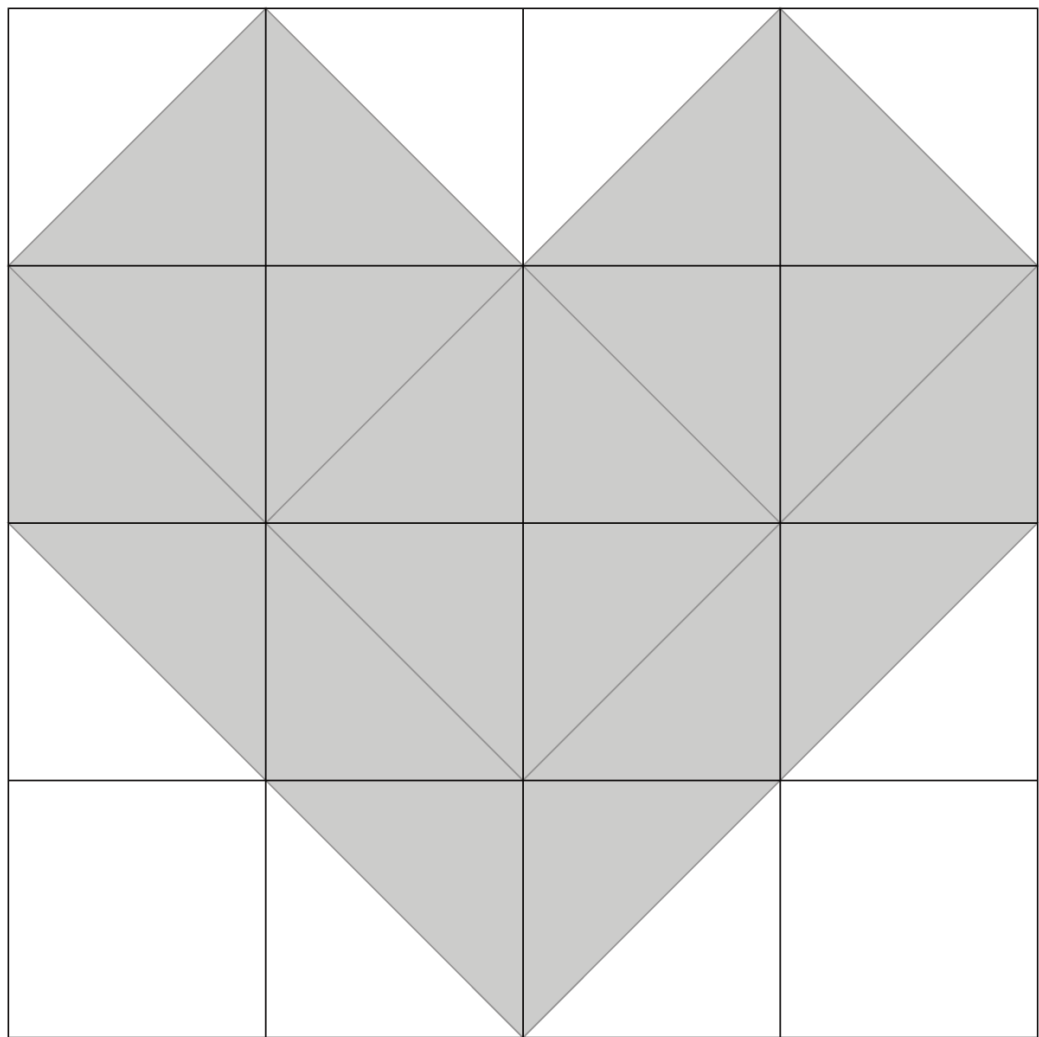
- 48" x 60" quilt batting.
- A long acrylic ruler with a 45° marking, a rotary cutter, cutting mat, thread, scissors, pins, pencil.

## Quilt Construction:

All seam allowances are  $\frac{1}{4}$ ". You will be making 4 heart & arrow blocks. The 4 blocks face **alternating directions**.

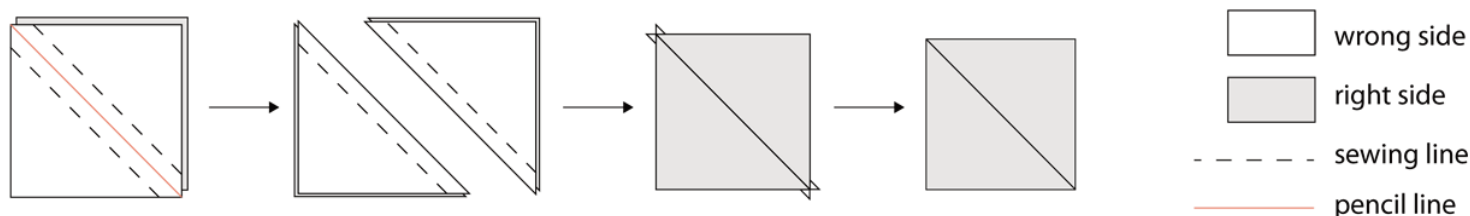
## Making Heart Block:

As shown in the following diagram, the heart block is a series of 16 squares, 14 of which are made up of half-square triangles. For each block (there are 4 in total), there are: (a) 8 squares that are half ground fabric & half colored fabrics, (b) 6 squares that are 2 colored fabrics and (c) 2 squares of ground fabric (previously cut  $3\frac{1}{2}$ " squares). Keeping these numbers in mind, randomly select fabrics from the previously cut 4" squares (or refer to the quilt photo for placement).



# Cupid's Arrow Quilt

**Making Half Square Triangles:** With right sides together (RST), place 2 squares together and draw a diagonal line (with a pencil) from one corner to another. Use this line as a guide to sew a  $\frac{1}{4}$ " seam down one side of the line. Turn your square around and repeat down the other side of the line. Cut directly along the pencil line, resulting in two new squares when opened. Press the seams open. Place the acrylic ruler on top of the sewn square, lining up the ruler corner with the square corner & the **seam line** with the  $45^\circ$  line. (The accuracy of this step is important for perfectly matched corners when piecing the quilt). Make sure you will be left with a minimum  $3\frac{1}{2}$ " square. Trim 2 sides with your rotary cutter. Spin ruler around, again aligning the seam line with the  $45^\circ$  line. Trim the other 2 sides, leaving a perfect  $3\frac{1}{2}$ " square.



Repeat this to construct all the squares necessary for the block. Lay them out in the heart formation. Sew the 4 squares in the first row together. Press seams to the right. Sew second row together. Press seams to the left. Continue alternating pressing direction for next 2 rows. Sew these rows together. Press all seams in the same direction.

Repeat to make 3 more heart blocks.

## Making Arrow:

**Making Arrow Head:** As shown in the following diagram, the arrow head is made up of two squares, each comprising a colored triangle and a ground fabric triangle. Use the previously cut 5" squares (choose fabric patterns randomly or refer to the photo for placement) to make the squares using the above Half-Square Triangle method.

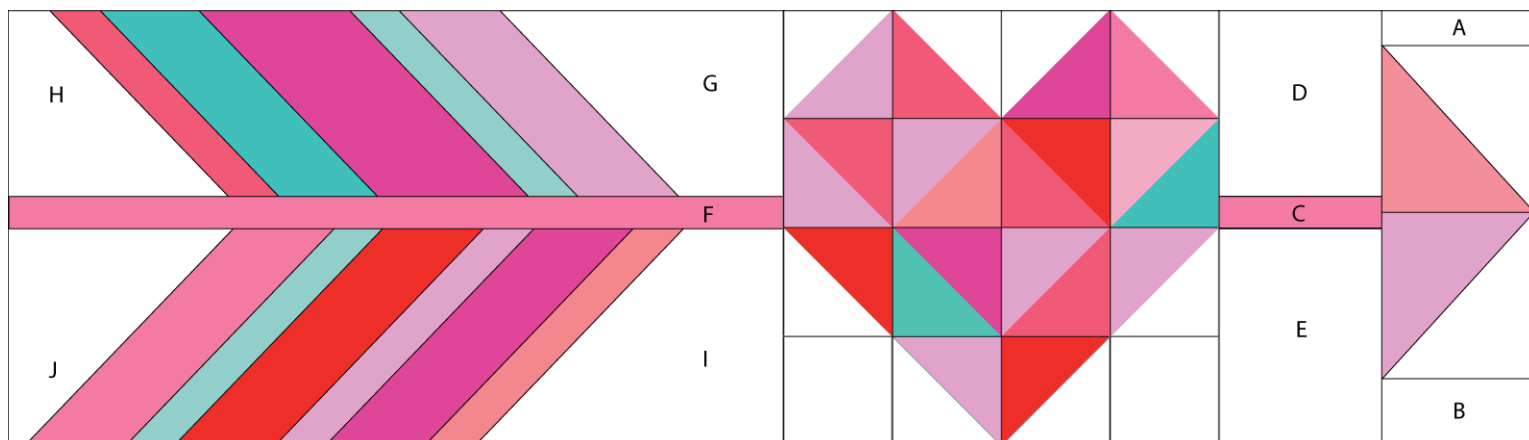
From each ground fabric, cut a piece  $2" \times 4\frac{1}{2}"$  and another  $3\frac{1}{4}" \times 4\frac{1}{2}"$  (A & B in the diagram). Choosing prints randomly, lay out pieces A, 2 half-square triangle squares & B to form arrow head segment. Sew together. Press seams toward A & B.

Repeat to make 3 more arrow head segments, remembering that 2 face the opposite direction.

From a  $1\frac{1}{2}"$  strip previously cut from the first 4 prints in the fabric cutting chart, cut a piece  $5\frac{1}{2}"$  long and another  $22\frac{1}{2}"$  long (C & F in diagram). Set aside F to be used in making the arrow tail segment.

Cut each ground fabric  $6\frac{1}{2}"$  strip in half, so each piece is about 22" long. Cut one of these in each fabric down to  $5\frac{1}{2}"$  wide. You will use the  $5\frac{1}{2}"$  pieces for pieces H, G & D and the  $6\frac{1}{2}"$  pieces for pieces J, I & E. For pieces D & E, cut a piece  $5\frac{1}{2}"$  wide from each strip. Choosing prints randomly, lay out pieces D, C & E to form the next segment. Sew together. Press seams toward C.

## Heart & Arrow Layout





# Cupid's Arrow Quilt

## Making Arrow Tail:

Cut the following pieces from the previously cut 1½", 2½", & 3½" strips. Any extra pieces should be cut from remaining fabric.

FABRIC	1½" x 9½"	2½" x 10½"	3½" x 11½"	1½" x 11"	2½" x 12"	3½" x 13"
SC5333 SPA COTTON COUTURE	3			3		
SC5333 PINK COTTON COUTURE	3			4		
CX6561 MINT CHERRY DOT	1	2		1	1	
CX6561 BLOM CHERRY DOT	2		1		1	1
CX6707 POPPY SWIRLY HEARTS		2			1	
CX5193 PINK HEART STRINGS	1	1	1		3	
CX6734 RED HELLO SUNSHINE	3		1	1	1	1
CX3584 POPPY CLOWN STRIPE	2			3	1	
CX6708 MINT HEART O MINE		1			1	

The tail “feathers” are comprised of a series of strips that, when completed, will be 1”, 2” & 3” wide. Each side (top & bottom) of each tail has a group of these pieces that total 9” (Example, for the bottom arrow in the quilt photo, the feathers at the top side of the arrow are, left to right, 3”, 1”, 1”, 1”, 2” & 1”, totalling 9”. Keep this formula in mind in constructing the arrow tails (or refer to the photo for layout).

**Pieces from the first 3 columns are to be used to make the top rows of feathers, and the last three columns for the bottom rows.**

Layout cut rectangles to form the four sets of arrow feathers. If in doubt, use the quilt photo as a reference.

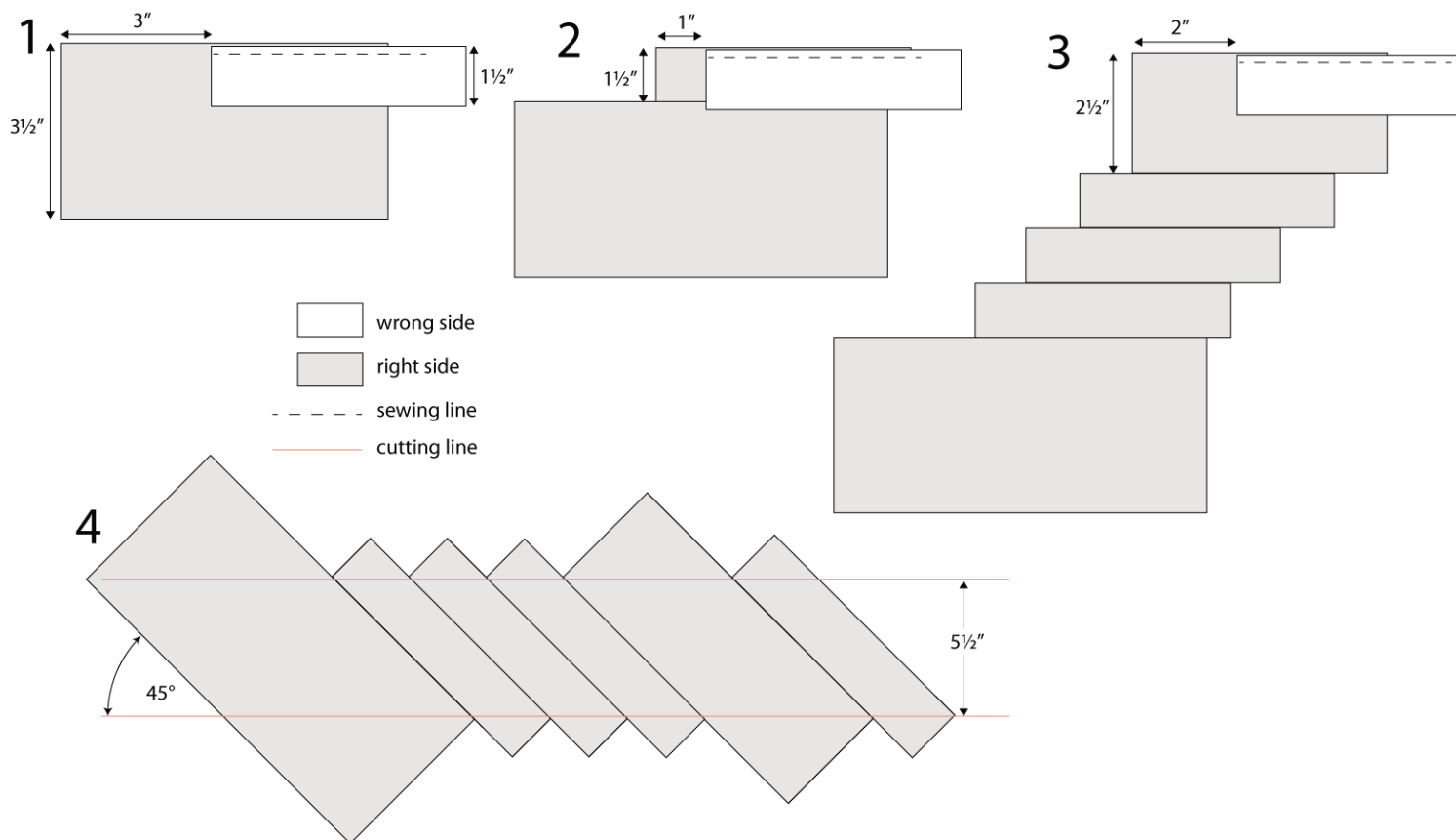
Start piecing, one row at a time. Here is the example of piecing the top row of the bottom arrow in the quilt, working left to right (Refer to the following diagram). With right sides together, place the second rectangle (1½" SC5333 SPA) upside down on top of the first (3½" CX5193), then move it over exactly 3" to the RIGHT. Sew a ¼" seam along the top, where the two pieces overlap (**fig 1**). Lift the top (2nd) fabric and place the third fabric (1½" CX6734) upside down on top of the second. Move it over exactly 1" to the RIGHT. Sew along the top, where the two pieces overlap (**fig 2**). Repeat this last step with the next 2 pieces (1½" SC5333 PINK & 2½" CX6707). Lift the top fabric and place the last fabric (1½" CX6561 BLOM)) upside down on top of the last. Move it over exactly 2" to the RIGHT. Sew along the top (**fig 3**). Press seams open. The important point here is: When adding a new piece, move the piece over 1", 2" or 3", depending on the width of the PREVIOUS piece, not the piece you are adding.

Repeat this with all feather segments leaning in the same direction, whether the top or bottom segment (Just make sure you are using the correct length strips - refer to above chart).

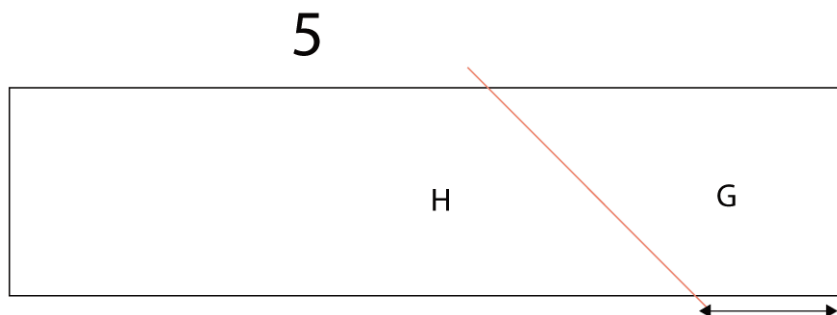
# Cupid's Arrow Quilt

Repeat the process with the segments facing the opposite direction, but (1) start at the RIGHT of the segment and (2) instead of moving each new piece 1", 2" or 3" to the right, move them to the LEFT.

Place your first row on your cutting board with the rectangle strips at an exact 45° angle. Measure a vertical 5½" segment, centered on the row. Cut the points off that extend beyond the 5½" segment. (**fig 4**) Repeat for the other 7 segments (4 of which will have rectangles heading in the opposite direction). Remember to cut the bottom segments to 6½" and the top ones to 5½".



**Assembling the Tail Segment:** Cut the remaining 5½" & 6½" strips of ground fabrics as follows (Refer to Heart & Arrow Layout Diagram): Choose two 5½" strips. Measure in 4½" from the right bottom edge. Using the acrylic ruler, mark a 45° degree line from that mark up, to the left. Cut along mark (**fig5**), creating piece G. The remaining piece will be piece H and will be trimmed later. Do the same thing with two 6½" strips, but start at the top right edge & cut toward the bottom, creating pieces I & J. Repeat this with the remaining four strips, but start at the left of the strip & cut toward the right.



Randomly choose ground fabrics and, referring to the Heart & Arrow Layout Diagram, piece together H, the 5½" tail segment and G. Piece together I, the 6½" tail segment and J. Press seams open & clip corners that extend.

Piece together these 2 strips with piece F that was previously set aside, making sure to align the right edge. Press seams toward F. Trim off excess H & J fabrics that extend beyond F.

**Assembling the Heart & Arrow Block:** Piece together the assembled segments to form the entire heart & arrow block. Repeat for other blocks.

# Cupid's Arrow Quilt

## **Piecing Quilt Top:**

Layout 4 completed blocks, alternating with sashing strips. Pin & sew together.

## **Assembling Quilt:**

Square up quilt top. Layer backing, batting and quilt top. Baste or pin.

Quilt as desired.

Join binding strips together and bind in your preferred fashion.