

PRINCESS CHARMING



LEVEL: CONFIDENT BEGINNER | SIZE: 36 1/2" W X 53" H | QUILT DESIGNED BY MARINDA STEWART

FABRIC REQUIREMENTS

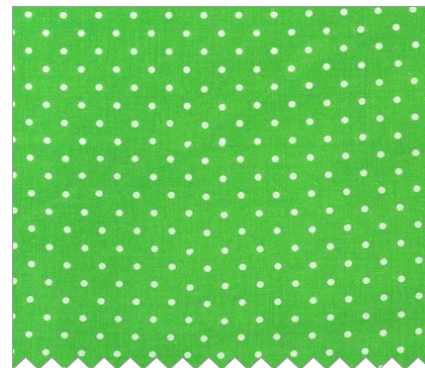
45" x 60" backing and batting



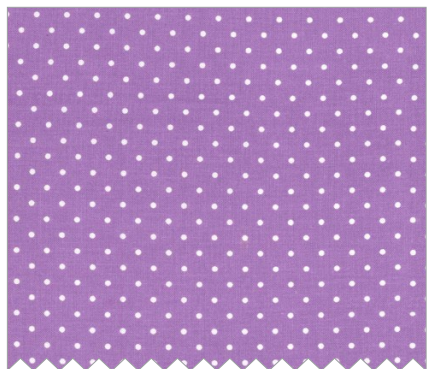
CX6544 Spring
Color Strips
1/2 yard



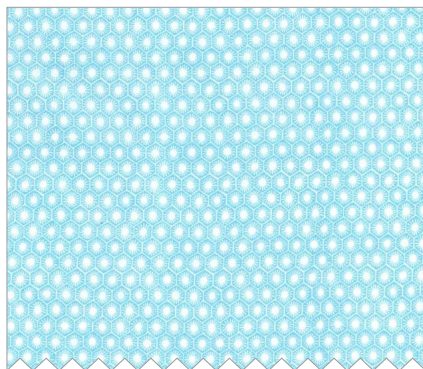
CX6746 Princess
Princess Charming
2/3 yard



CX5514 Mint
Pinhead
3/8 yard



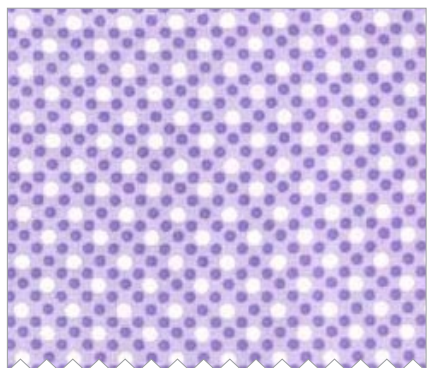
CX5514 Purple
Pinhead
6" x 7" piece



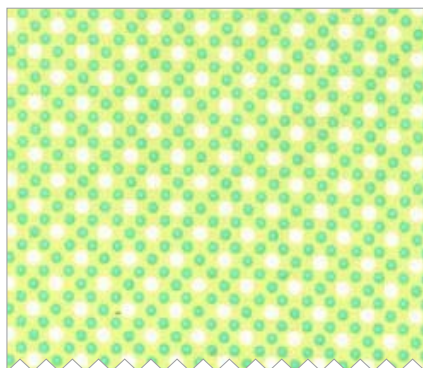
DC6512 Aqua
Sun Tiles
1/2 yard



CX6566 Lavender
Princess Blossoms
3/8 yard



CX6322 Opal
Dim Dots
3/8 yard



CX6322 Limeade
Dim Dots
7" x 10" piece



SC5333 Bright White
Cotton Couture
9" x 12" piece

"Princess Charming"
 Quilt by Marinda Stewart
 Size: 36 1/2" x 53" - Skill Level : Confident Beginner

Materials

Fabric	Yardage	Cutting
CX6544 Spring Color Strips	1/2 yard	(5) 2 1/2" x W.O.F. - binding (2) 1" x 23 1/2" (2) 1" x 28 1/2 1/2" (2) 1" x 32 1/2" (2) 1" x 40 1/2"
CX6746 Princess Princess Charming	2/3 yard *	(1) 23 1/2" W x 27 1/2" H
CX5514 Mint Pinhead	3/8 yard	(1) 5 1/2" x 24 1/2" (1) 4 1/2" x 15 3/4" (1) 4 1/2" x 16" (2) 3" x 7"
CX5514 Purple Pinhead	6" x 7" piece	(2) mountains (see pattern)
DC6512 Aqua Sun Tiles	1/2 yard	(1) 6 1/2" x 24 1/2" (1) 4 1/2" x 26" (1) 4 1/2" x 26 1/2" (44) 2" squares (2) 3" x 7" (12) 2 1/2" x 3"
CX6566 Bubblegum Princess Blossoms	3/8 yard	(10) 3 1/2" x 7" (8) 2 1/2" x 3"
CX6322 Opal Dim Dots	3/8 yard	(12) 3 1/2" x 7" (12) 2 1/2" x 3"
CX6322 Limeade Dim Dots	7" x 10" piece	(2) trees (see pattern)
SC5333 Bright White Cotton Couture	9" x 12" piece	(3) clouds (see pattern)

Also Needed: 45" x 60" backing, 45" x 60" batting, scissors, straight pins, rotary cutter, acrylic ruler, mat, threads to match including lavender, aqua, lime, yellow, orange, and hot pink for the stitched rainbow, and fusible web. OPTIONAL (but recommended) iron-on tear-away stabilizer.

 * Or amount needed for one complete repeat. Center cutting on motif as shown.

Disclaimers

This pattern is provided as a courtesy to quilt stores, catalogs, and quilters. Michael Miller Fabrics, LLC is not responsible for the accuracy of any kits packaged to accompany this pattern. Please direct any inquiries to the kit maker.

Yardage requirements for this pattern may allow for excess yardage to accommodate specific placement of motifs or to allow for any fussy-cutting to achieve the finished quilt design.

While every attempt has been made to give accurate measurements, yardage requirements, and construction directions; this does not allow personal variations in measuring, cutting, and or sewing. The enclosed directions were used in the construction of the original quilt.

Directions:

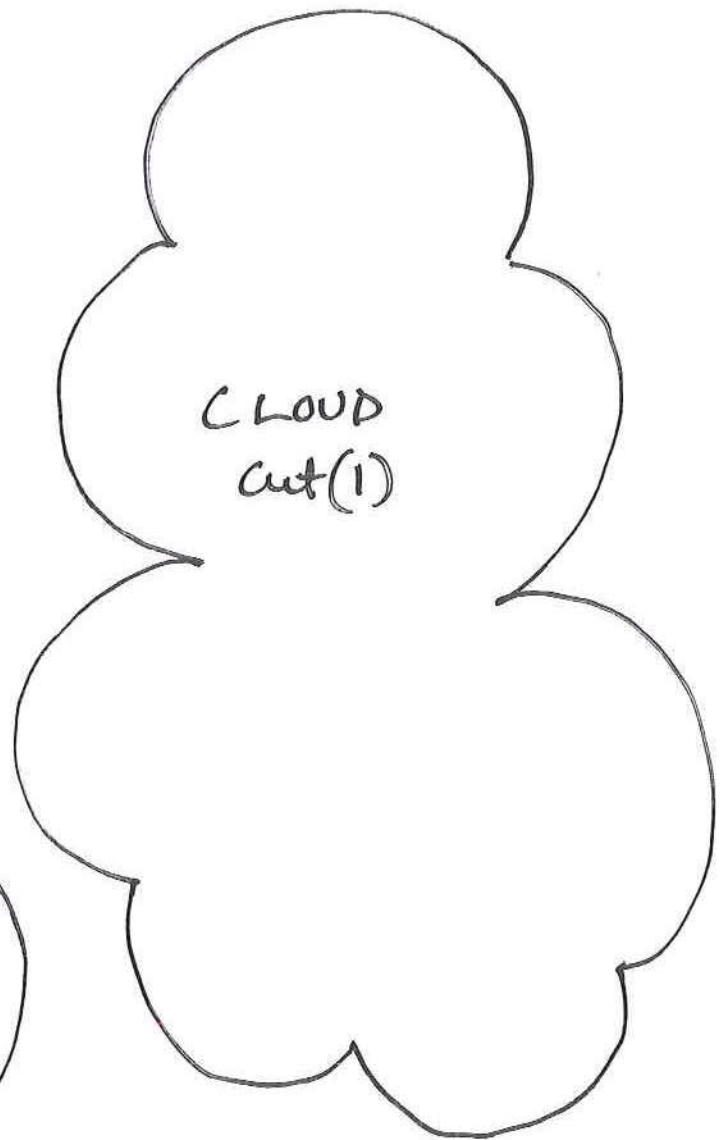
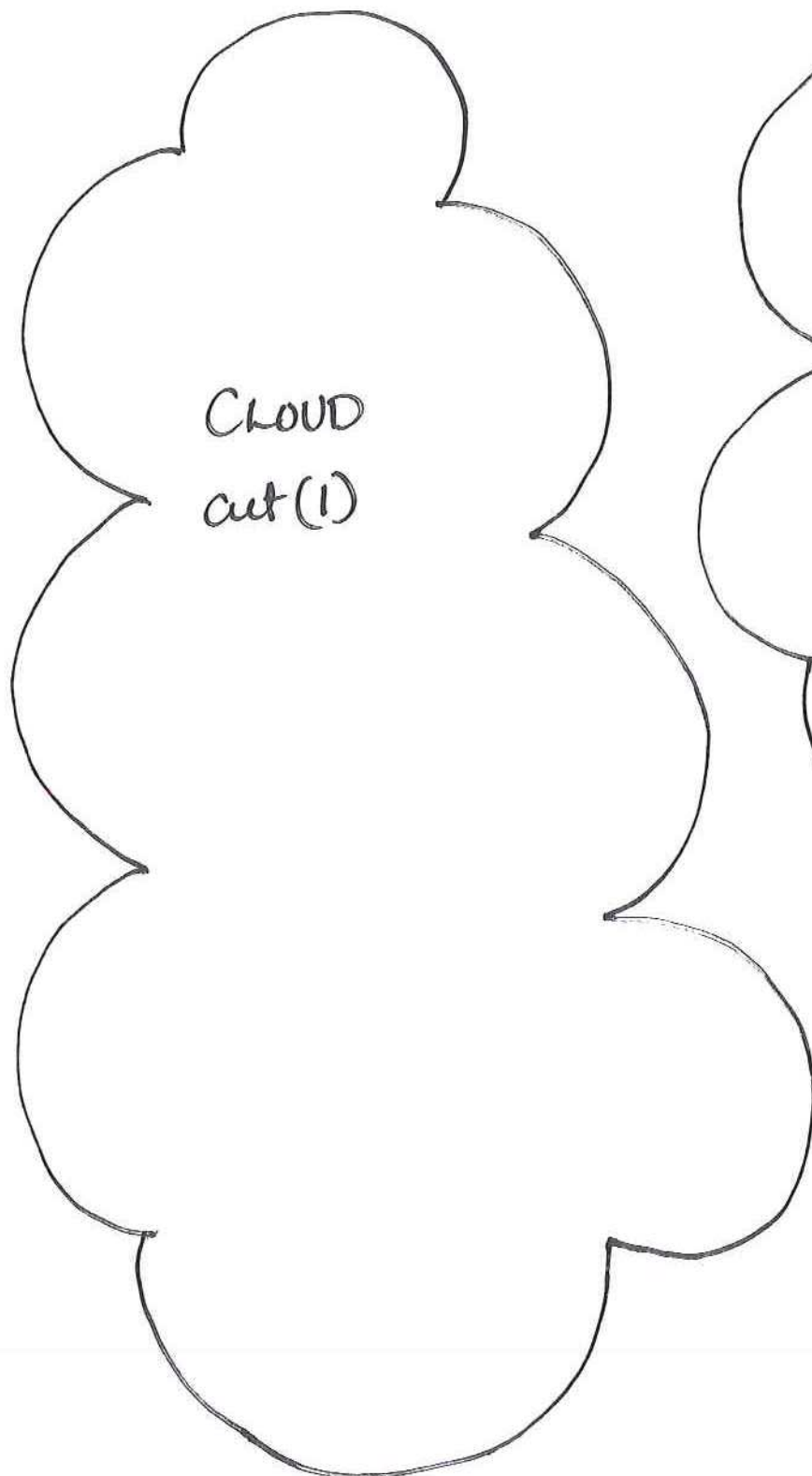
1. Sew one CX6544 1" x 23 1/2" strip to the top and bottom of the panel. Sew one CX6544 1" x 28 1/2" strip to each side.
2. Sew one DC6512 6 1/2" x 24 1/2" piece to the top of the panel. Sew one CX5514 Mint 5 1/2" x 24 1/2" piece to the bottom of the panel. Using base of the left mountain pattern, trace the edge as close to the top end of the CX5514 Mint 4 1/2" x 16" piece. Trace the bottom edge of the mountain on the bottom end of the DC6512 4 1/2" x 26 1/2". Clip curves. Sew the pieces together to make one 39 1/2" long strip. Sew to the left side of the quilt. Repeat for the right side using the right mountain panel and CX5514 Mint 4 1/2" x 15 3/4" and DC6512 4 1/2" x 26" pieces. Sew to the right side of the quilt.
3. Trace (2) trees, one each of (3) clouds, one each of the mountains onto the paper side of the fusible web. Rough cut out. Iron the trees onto the wrong side of CX6322 Limeade, the clouds onto SC5333, and the mountains onto CX5514 Purple. Cut out. Remove paper backing. Iron in place on the quilt as shown. One tree & one mountain on each side and three clouds on top. Machine applique each in place. Add the tree branches and trunk using lavender thread and a satin stitch as shown. OPTIONAL: (but recommended) Iron stabilizer on the back of the quilt before stitching. Stitch through all layers. Stabilizer improves stitch quality and helps reduce distortion. Remove all traces of stabilizer after stitching.
4. For the rainbow - lightly draw an arch guideline between mountains as shown. Machine satin stitch over the guideline using lavender thread and a wide stitch width. Follow with successive rows of satin stitch edge to the edge using aqua, lime, yellow, orange, and hot pink. Use stabilizer on the back of the quilt as in Step #3.
5. Sew CX6544 1" x 32 1/2" strip to the top and bottom of the quilt. Sew CX6544 1" x 40 1/2" strip to each side of the quilt. Set aside.
6. For the top border - place one DC6512 Aqua 2" square right sides together in the upper left corner of one CX6322 Opal 3 1/2" x 7" piece. Sew diagonally from corner to corner. Press open. Trim excess from the back. Repeat for the second corner as shown. Make (6) using CX6322 3 1/2" x 7" pieces and (5) using CX6566 3 1/2" x 7" pieces.
7. Beginning and ending with a CX6322 piece alternate with the CX6566 pieces to make 7" x 33 1/2" strip. Sew strip to the top of the quilt. Set aside.
8. Repeat step #6 using the remaining CX6322 Opal and CX6566 Bubblegum 3 1/2" x 7" pieces and CX5514 Mint 2" squares.
9. Repeat step #7 and sew completed strip to the bottom of the quilt. Set aside.
10. For one side of the quilt - from the top alternate one CX6322 Opal 2 1/2" x 3" piece. Begin with CX6322 Opal and end with DC6512 Aqua. Make two. Sew one CX5514 Mint 2 1/2" x 3" piece to one CX6566

Bubblegum 2 1/2" x 3" piece 4 times. Make (2). Sew one strip to each end of the blue and lavender strips as shown. Sew one DC6512 Aqua 3" x 7" piece to the top of each strip and one CX5514 Mint 3" x 7" to the bottom of each strip. Sew a completed strip to each side of the quilt.

11. Layer backing, batting, and quilt top. Baste.
12. Quilt as desired.
13. Bind quilt using CX6544 2 1/2" wide strips pieced as needed for length.

"Princess Charming"
PATTERNS

Pg 1 of 2



PATTERNS

MOUNTAIN
cut (1)
LEFT

MOUNTAIN
cut (1) RIGHT

"PRINCESS
CHARMING"

TREE
cut (2)

CLOUD
cut (1)