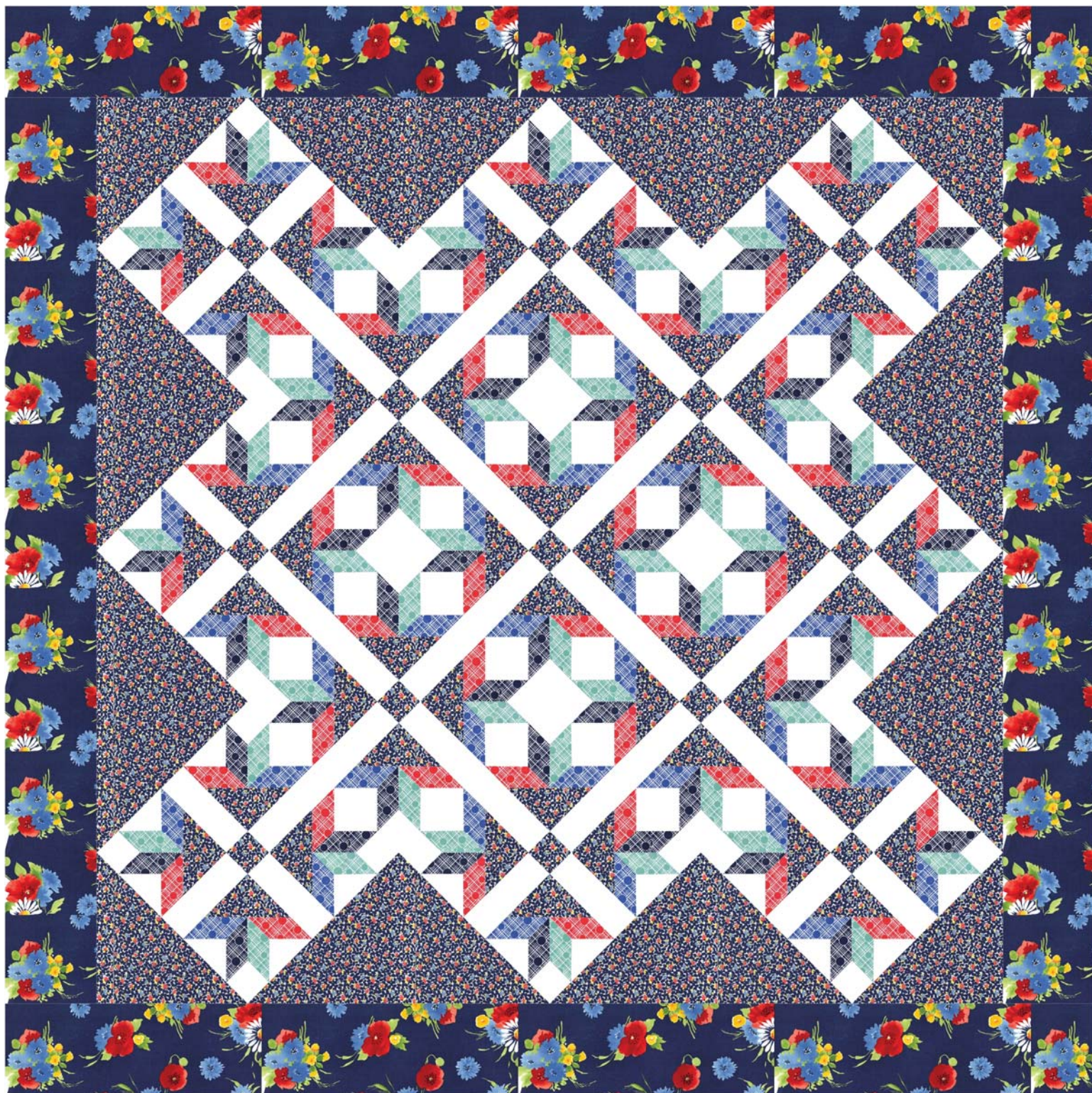


# FLORET



michael | miller FABRICS

LEVEL: INTERMEDIATE | SIZE: 72" W X 72" H | QUILT DESIGNED BY SWIRLY GIRL DESIGNS

© Swirly Girls Design, Inc. Permission is granted to shop owners and teachers to make copies for promotional or educational purposes.  
This pattern may not be reproduced for commercial purposes.



# FABRIC REQUIREMENTS



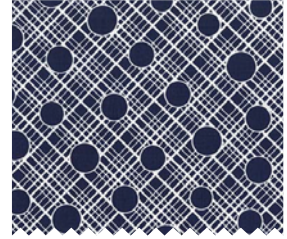
**PC6795\_NAVY**  
BETTES BOUQUET  
2 YARDS  
(INCLUDES BINDING)



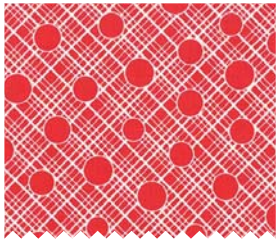
**PC6730\_NAVY**  
MARGIE  
1 3/4 YARDS  
5 YARDS (BACKING)



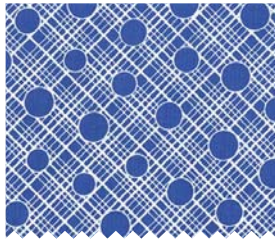
**SC5333\_BRIGHT WHITE**  
COTTON COUTURE  
1 3/4 YARD



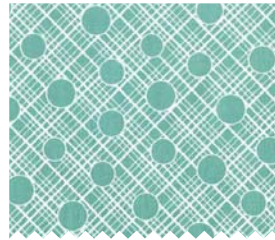
**PC6704\_NAVY**  
BABS  
1/2 YARD



**PC6704\_RED**  
BABS  
1/2 YARD



**PC6704\_BLUE**  
BABS  
1/2YARD



**PC6704\_MINT**  
BABS  
1/2 YARD


# Floret

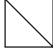
by Swirly Girls Design

72" x 72"

## Cutting:

WOF = Width of Fabric

**PC6730 Navy:** Cut [1] 21" x WOF strip; subcut [2] 21" squares and cut twice diagonally  (setting triangles)

[1] 10-3/4" x WOF strip; subcut [2] 10-3/4" squares  
and cut once diagonally  (corner triangles)

[4] 4-7/8" x WOF strips; subcut [26] 4-7/8" squares and cut once diagonally 

[1] 2-1/2" x WOF strip; subcut [13] 2-1/2" squares

**PC6704 Blue:** Cut [2] 2-7/8" x WOF strips; subcut [26] 2-7/8" squares and cut once diagonally 

[4] 2-1/2" x WOF strips; subcut [52] 2-1/2" squares

**PC6704 Mint:** Cut [2] 3" x WOF strips; subcut [26] 3" squares

[4] 2-1/2" x WOF strips; subcut [52] 2-1/2" squares

**PC6704 Navy:** Cut [2] 3" x WOF strips; subcut [26] 3" squares

[4] 2-1/2" x WOF strips; subcut [52] 2-1/2" squares

**PC6704 Red:** Cut [2] 2-7/8" x WOF strips; subcut [26] 2-7/8" squares and cut once diagonally 

[4] 2-1/2" x WOF strips; subcut [52] 2-1/2" squares

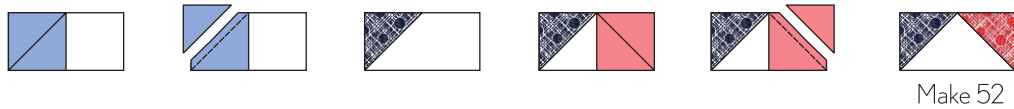
**From SC5333 Bright White:** Cut [4] 6-1/2" x WOF strips; subcut [52] 2-1/2" x 6-1/2" rectangles

[7] 4-1/2" x WOF strips; subcut [104] 2-1/2" x 4-1/2" rectangles

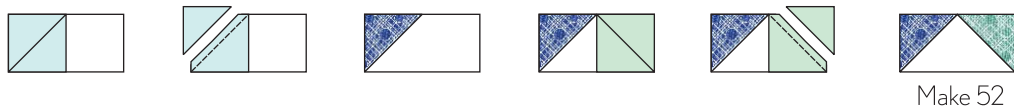
[1] 2-1/2" x WOF strip; subcut [13] 2-1/2" squares

**From CX6795 Bette's Bouquet:** Cut [7] 6-1/2" x WOF strips (borders)  
[8] 2-1/2" x WOF strips (binding)

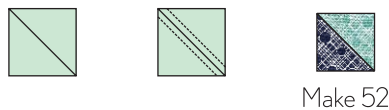
Draw a diagonal line on the wrong side of [52] 2-1/2" PC6704 Navy squares and [52] 2-1/2" PC6704 Red squares. With right sides together, place a 2-1/2" Navy square on the corner of a 2-1/2" x 4-1/2" SC5333 Bright White rectangle and stitch on the drawn line. Trim 1/4" from seam and press toward Navy. Stitch a 2-1/2" Red square to adjacent corner, trim and press toward Red. Make [52] Navy/Red flying geese units.



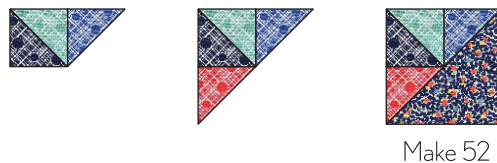
Draw a diagonal line on the wrong side of [52] 2-1/2" PC6704 Blue squares and [52] 2-1/2" PC6704 Mint squares. With right sides together, place a 2-1/2" Blue square on the corner of a 2-1/2" x 4-1/2" SC5333 Bright White rectangle and stitch on the drawn line. Trim 1/4" from seam and press toward Blue. Stitch a 2-1/2" Mint square to adjacent corner, trim and press toward Mint. Make [52] Blue/Mint flying geese units.



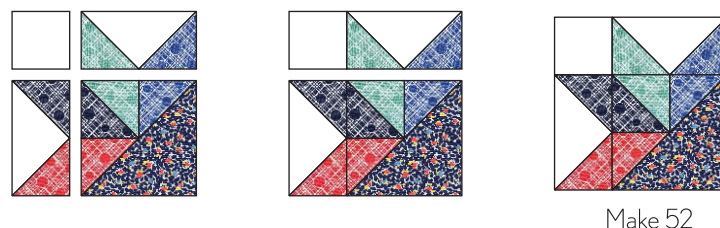
Draw a diagonal line on the wrong side of [26] 3" Mint squares. Place a 3" Mint square, right sides together, on a 3" Navy square. Stitch 1/4" on each side of the drawn line. Cut along line and press toward Navy. Trim to measure 2-1/2" square. Make [52] Mint/Navy half-square triangle units.



Sew a Blue triangle to the right side of a Mint/Navy half-square triangle unit. Press toward Blue. Sew a Red triangle to bottom of unit. Press toward Red. Sew a PC6730 Navy triangle to unit, along long side. Press toward PC6730 Navy triangle. Make [52] corner units.

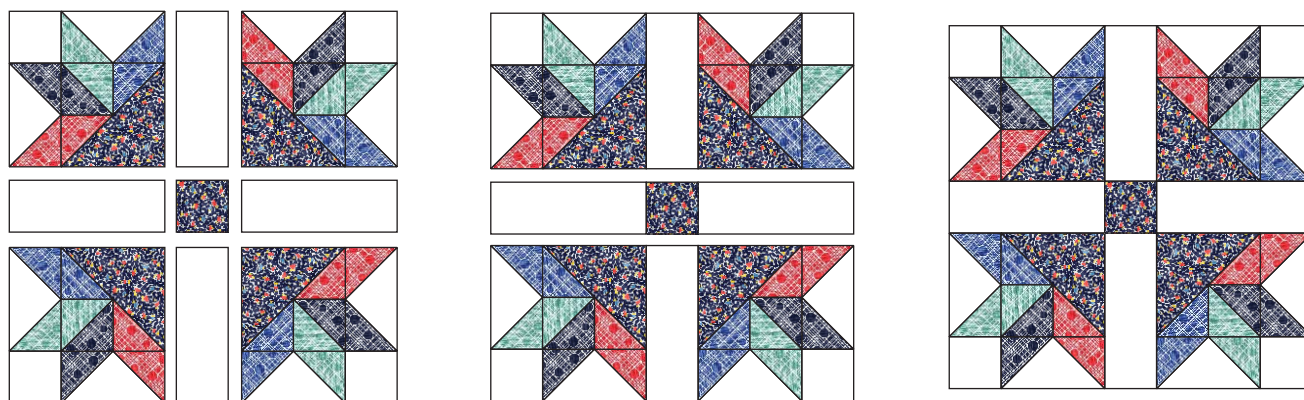


Arrange [1] 2-1/2" Bright White square, [1] Blue/Mint flying geese unit, [1] Navy/Red flying geese unit and [1] corner unit as shown. Sew Bright White square to Blue/Mint flying geese unit and press toward flying geese unit. Sew Navy/Red flying geese unit to corner unit and press toward flying geese unit. Sew pieced units together. Make [52] block corners.



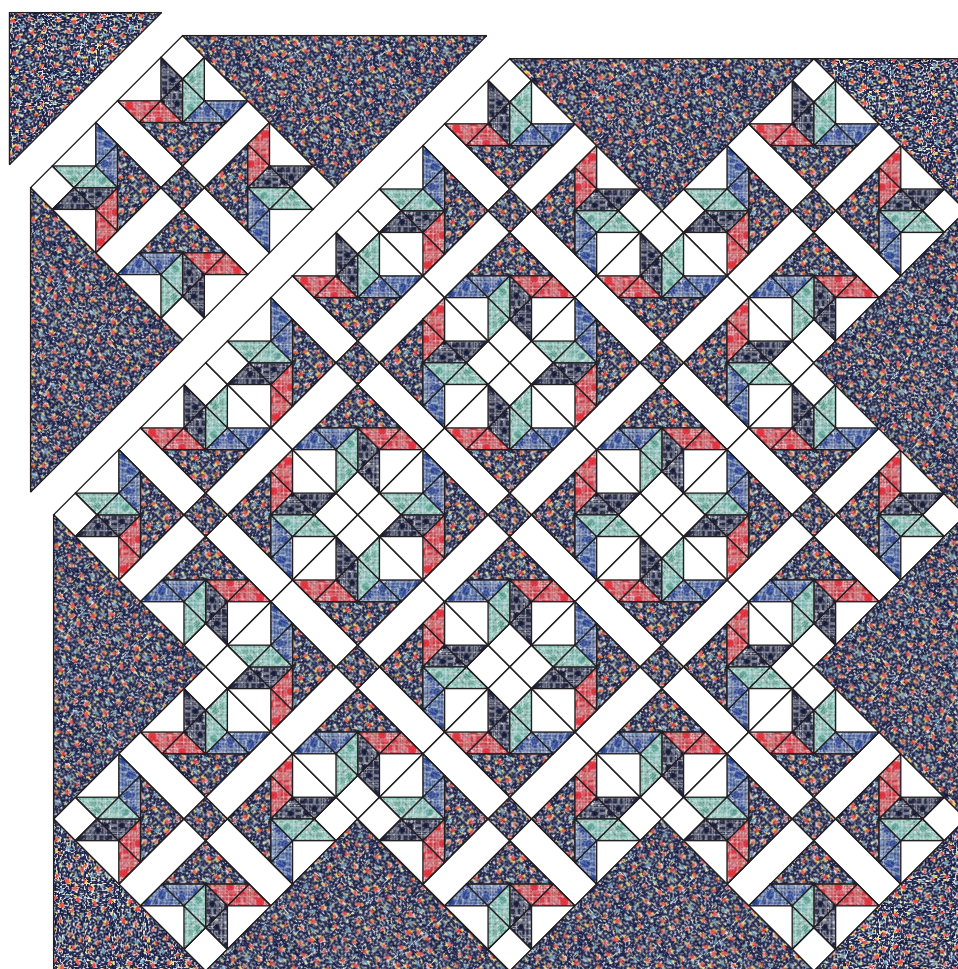


Arrange [4] block corners, [4] 2-1/2" x 6-1/2" Bright White rectangles and [1] 2-1/2" PC6730 Navy square as shown. Sew together into horizontal rows and press toward Bright White rectangles. Sew rows together and press seams to complete block. Make [13].



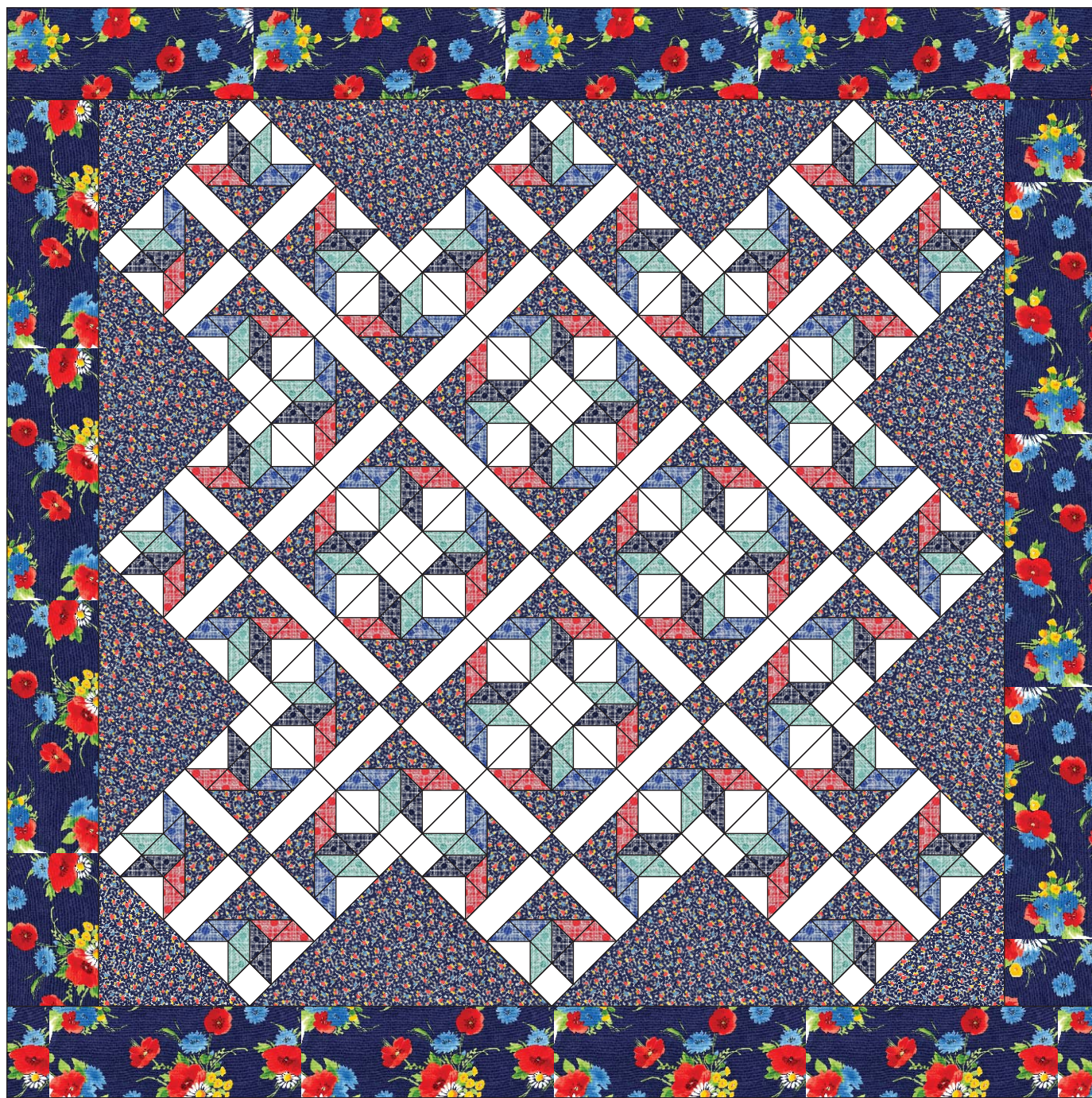
Make 13

Arrange blocks, setting triangles and corner triangles as shown below. Sew into diagonal rows and press seams open. Sew rows together to complete quilt center.





Sew 6-1/2" PC6795 Navy border strips together end to end. Cut [2] strips 60" long and sew to sides of quilt center. Press toward border. Cut [2] strips 72" long and sew to top and bottom of quilt center. Press toward border to complete quilt top.



  
Swirly Girls

[www.swirlygirlsdesign.com](http://www.swirlygirlsdesign.com)

© Swirly Girls Design, Inc. Permission is granted to shop owners and teachers to make copies for promotional or educational purposes.  
This pattern may not be reproduced for commercial purposes.