

# HEARTS A FLUTTER



# FABRIC REQUIREMENTS



**CX6562\_YELLOW**  
UNICORN PRINCESS  
1/4 YARD



**CX6562\_SEAFOAM**  
UNICORN PRINCESS  
1/3 YARD



**CX6708\_YELLOW**  
HEART O'MINE  
2 YARDS



**CX6566\_BUBBLEGUM**  
PRINCESS BLOSSOMS  
1/4 YARD



**CX6566\_LAVENDER**  
PRINCESS BLOSSOMS  
1/4 YARD



**CX6566\_TURQUOISE**  
PRINCESS BLOSSOMS  
1/3 YARD



**CX6563\_SEAFOAM**  
UNICORN FROLIC  
1/3 YARD



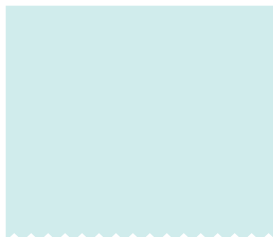
**CX6563\_OPAL**  
UNICORN FROLIC  
1/4 YARD  
3 3/4 YARDS (BACKING)



**SC5333\_LAVENDER**  
COTTON COUTURE  
2/3 YARD



**SC5333\_GIRL**  
COTTON COUTURE  
2/3 YARD



**SC5333\_SPA**  
COTTON COUTURE  
1/3 YARD



**SC5333\_CANARY**  
COTTON COUTURE  
1/4 YARD



**SC5333\_BRIGHT WHITE**  
COTTON COUTURE  
2 3/4 YARDS

## "Unicorn Princess"

Quilt by Heidi Pridemore

Size: Approximately 57" x 69" Skill Level: Beginner

### Materials

#### Cutting instructions

**Please Note: All strips are cut across the width of fabric (WOF) from selvage to selvage edge unless otherwise noted.**

	Fabric	Yardage	Cutting
(A)	CX6562-Yellow Unicorn Princess – Yellow	¼ yard	• See instructions to cut four x-small hearts.
(B)	SC5333-Canary Cotton Couture – Canary	¼ yard	• See instructions to cut four x-small hearts.
(C)	CX6566-Bubblegum Princess Blossoms – Bubblegum	¼ yard	• See instructions to cut three small hearts.
(D)	SC5333-Girl Cotton Couture – Girl	⅔ yard	• Cut four 2" x WOF strips. Sew the strips together, end to end with diagonal seams, and cut two 2" x 60 ½" strips. • Cut three 2" x WOF strips. Sew the strips together, end to end with diagonal seams, and cut two 2" x 51 ½" strips. • See instructions to cut three small hearts.
(E)	CX6563-Lavender Unicorn Frolic – Lavender	¼ yard	• See instructions to cut five medium hearts.
(F)	CX6566-Lavender Princess Blossoms – Lavender	¼ yard	• See instructions to cut four medium hearts.
(G)	SC5333-Spa Cotton Couture – Spa	⅓ yard	• See instructions to cut three large hearts.
(H)	CX6566-Turq. Princess Blossoms – Turq.	⅓ yard	• See instructions to cut three large hearts.
(I)	CX6563-Seafoam Unicorn Frolic – Seafoam	⅓ yard	• See instructions to cut four x-large hearts.
(J)	CX6562-Seafoam Unicorn Princess – Seafoam	⅓ yard	• See instructions to cut three xx-large hearts.
(K)	CX6708-Yellow Heart O' Mine – Yellow	2 yards	• Cut two 3 ½" x 63 ½" strips from the length of fabric. • From the remaining fabric, cut four 3 ½" x WOF strips. Sew the strips together, end to end with diagonal seams, and cut two 3 ½" x 57 ½" strips.
(L)	SC5333-Lavender Cotton Couture – Lavender	⅔ yard	• Cut seven 2 ½" x WOF strips for the binding.
(M)	SC5333-Brite White Cotton Couture – Brite White	2 ¾ yards	• Cut two 48 ½" x WOF strips. Sew the pieces together and trim to 48 ½" x 60 ½" to make the background.
Backing	CX6563-Lavender Unicorn Frolic – Lavender	3 ¾ yards	• Cut two 65" x WOF strips. Piece the strips together and trim to make the 65" x 77" pieced backing.

#### You will also need:

- 65" x 77" batting, fusible web, threads to match, scissors, straight pins, acrylic ruler, rotary cutter and mat.

## Disclaimers

This pattern is provided as a courtesy to quilt stores, catalogs and quilters. Michael Miller Fabrics, LLC is not responsible for the accuracy of any kits packaged to accompany this pattern. Please direct any inquiries to the kit maker.

Yardage requirements for this pattern may allow for excess yardage to accommodate specific placement of motifs or to allow for any fussy-cutting to achieve the finished quilt design.

While every attempt has been made to give accurate measurements, yardage requirements and construction directions; this does not allow personal variations in measuring, cutting or sewing. The enclosed directions were used in the construction of the original quilt.

## Block Assembly

1. Following the manufacturer's instructions, trace the listed number of each template onto the paper side of the fusible web. Roughly cut out each template about  $\frac{1}{8}$ " outside the drawn lines.
2. Press each template onto the wrong side of the fabrics as listed on the templates. Cut out each template on the drawn lines.
3. Refer to the quilt photo to arrange and press the thirty-six hearts onto the Fabric M background strip (Fig. 1).
4. Finish the raw edges of each shape with a decorative stitch such as a buttonhole or satin stitch to complete the center block.

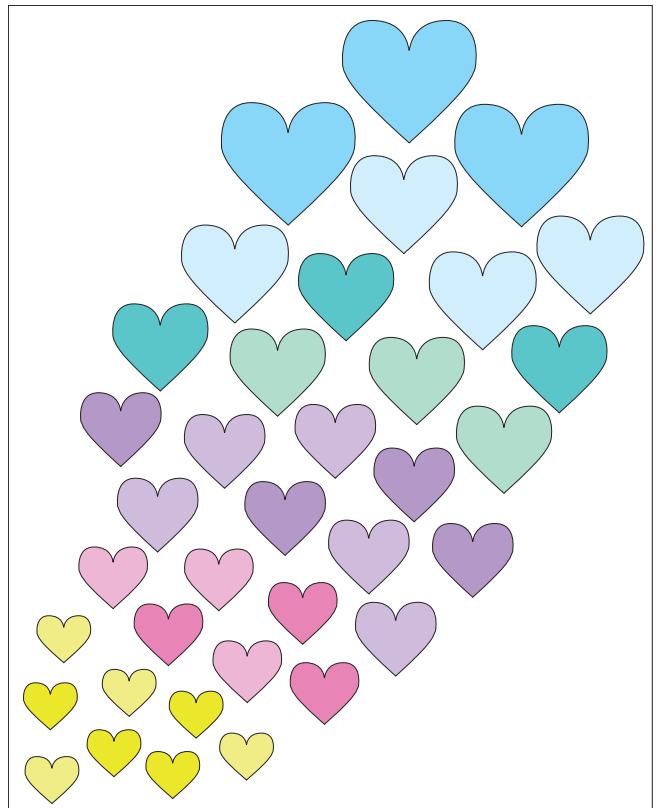
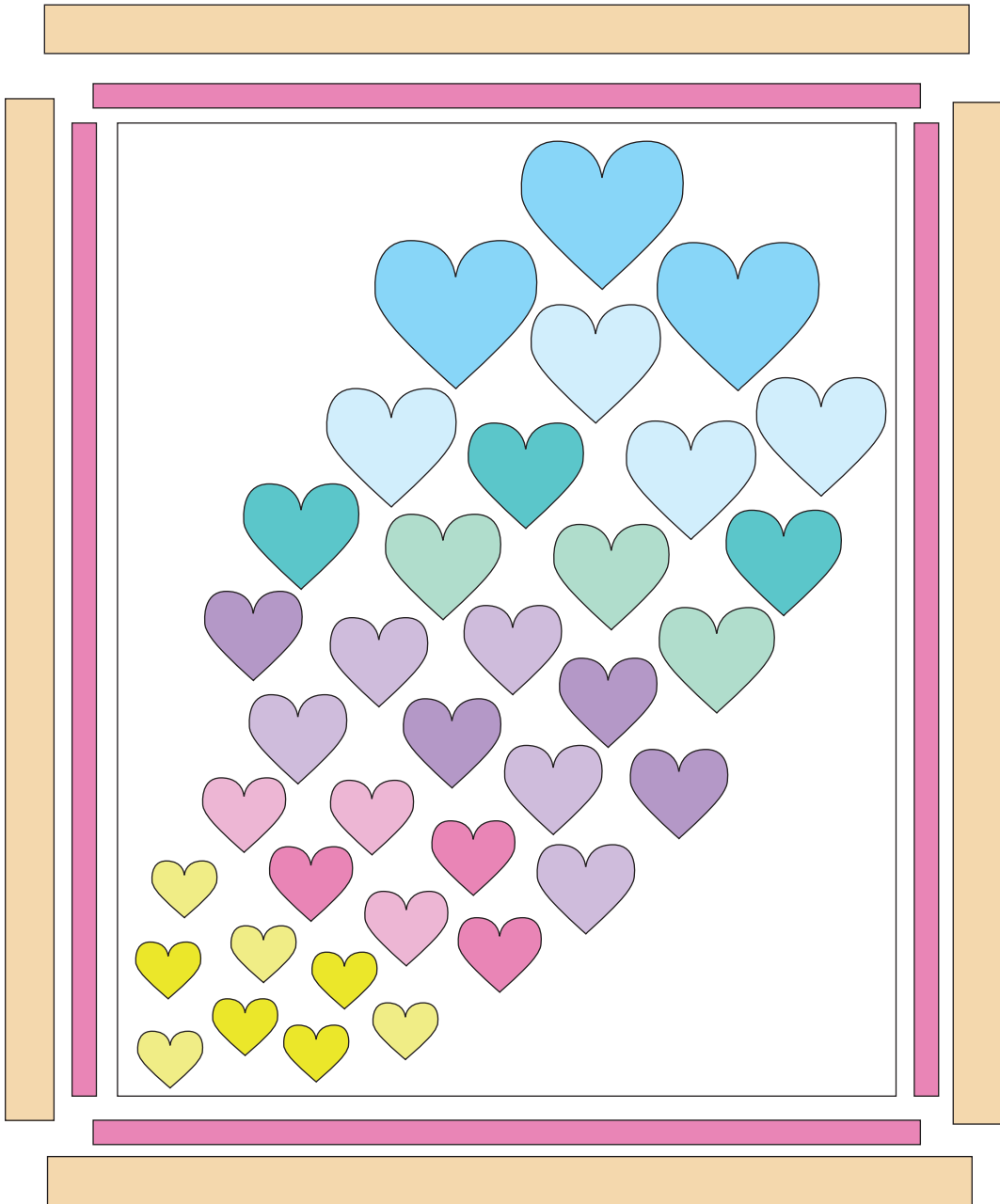


Fig. 1

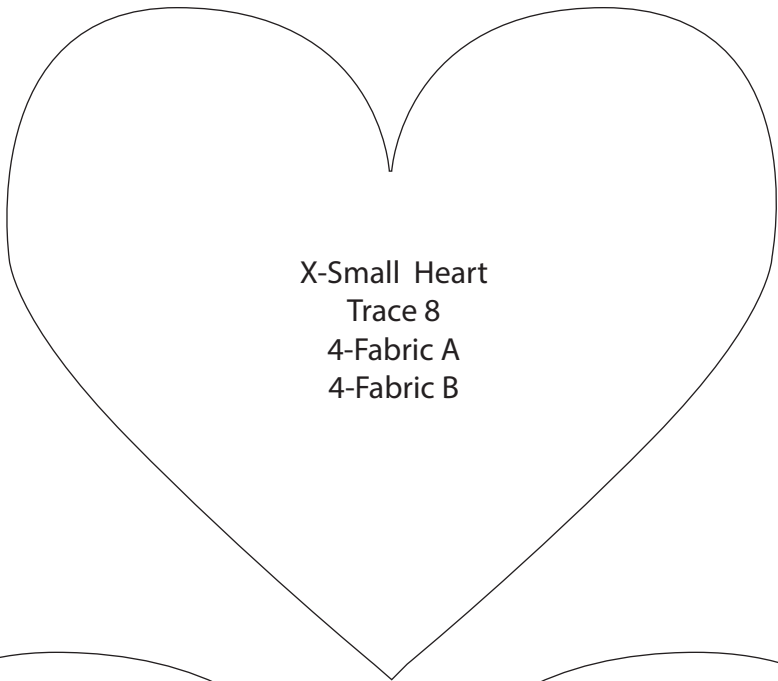
## Quilt Top Assembly

*(Follow Quilt Layout while assembling the quilt top.)*

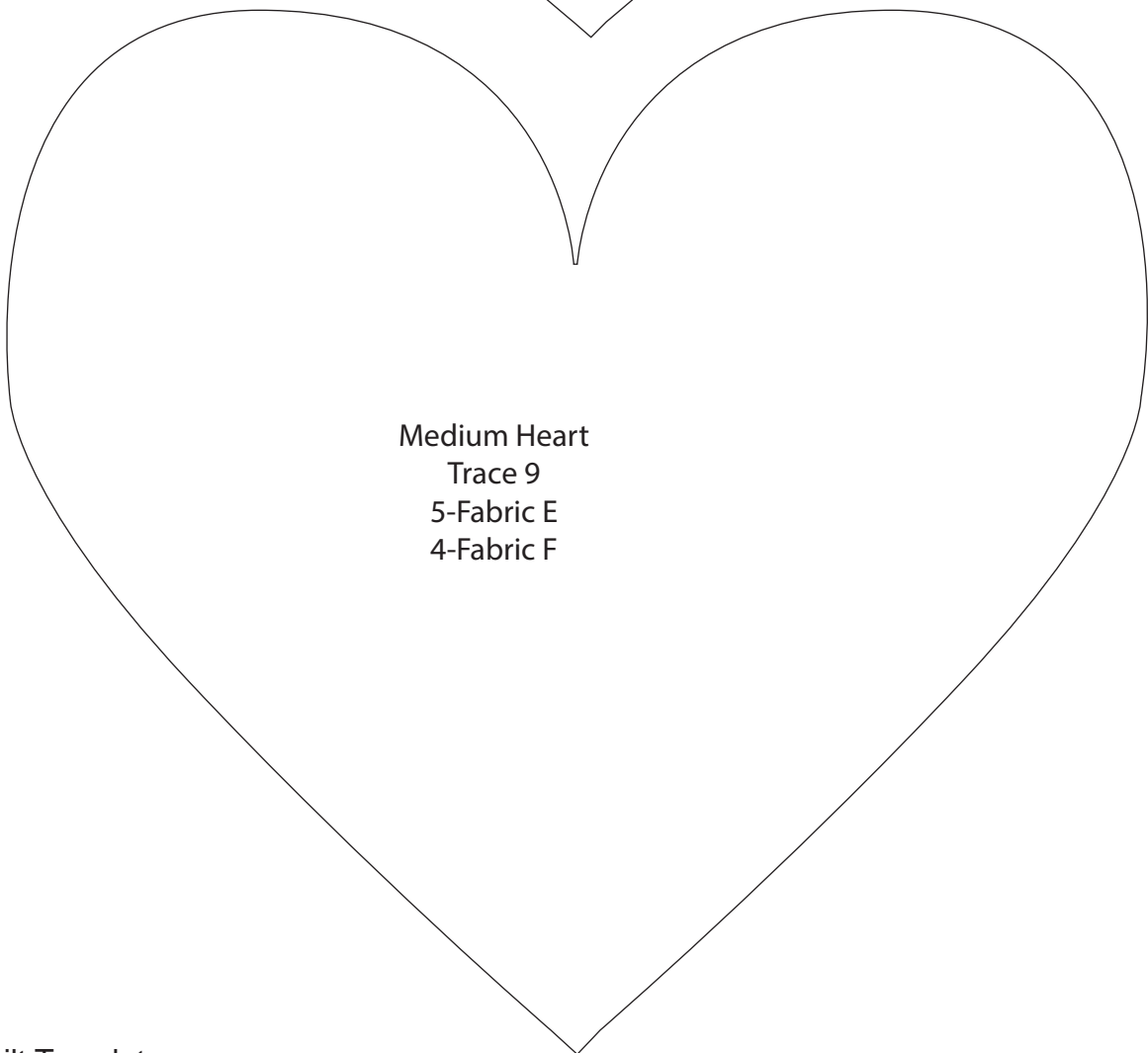
5. Sew one 2" x 60  $\frac{1}{2}$ " Fabric D strip to each side of the center block. Sew one 2" x 51  $\frac{1}{2}$ " Fabric D strip to the top and to the bottom of the center block to make the quilt top (Fig 2).
6. Sew one 3  $\frac{1}{2}$ " x 63  $\frac{1}{2}$ " Fabric K strip to each side of the quilt top. Sew one 3  $\frac{1}{2}$ " x 57  $\frac{1}{2}$ " Fabric K strip to the top and to the bottom of the quilt top.
7. Layer and quilt as desired.
8. Sew the seven 2  $\frac{1}{2}$ " x WOF Fabric L strips together, end-to-end with 45-degree seams, to make the binding. Fold this long strip in half lengthwise with wrong sides together and press.
9. Bind as desired.



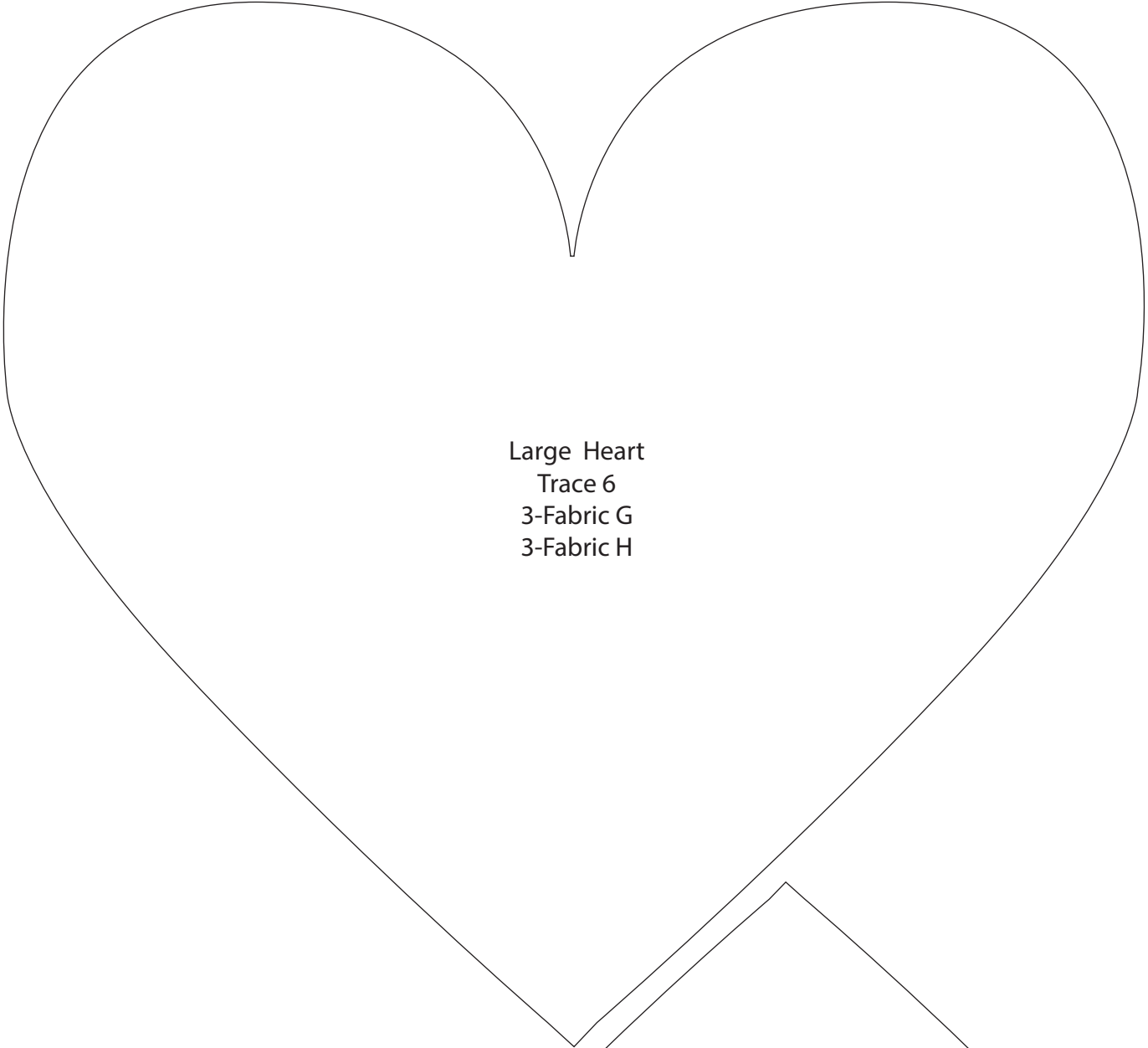
Quilt Layout



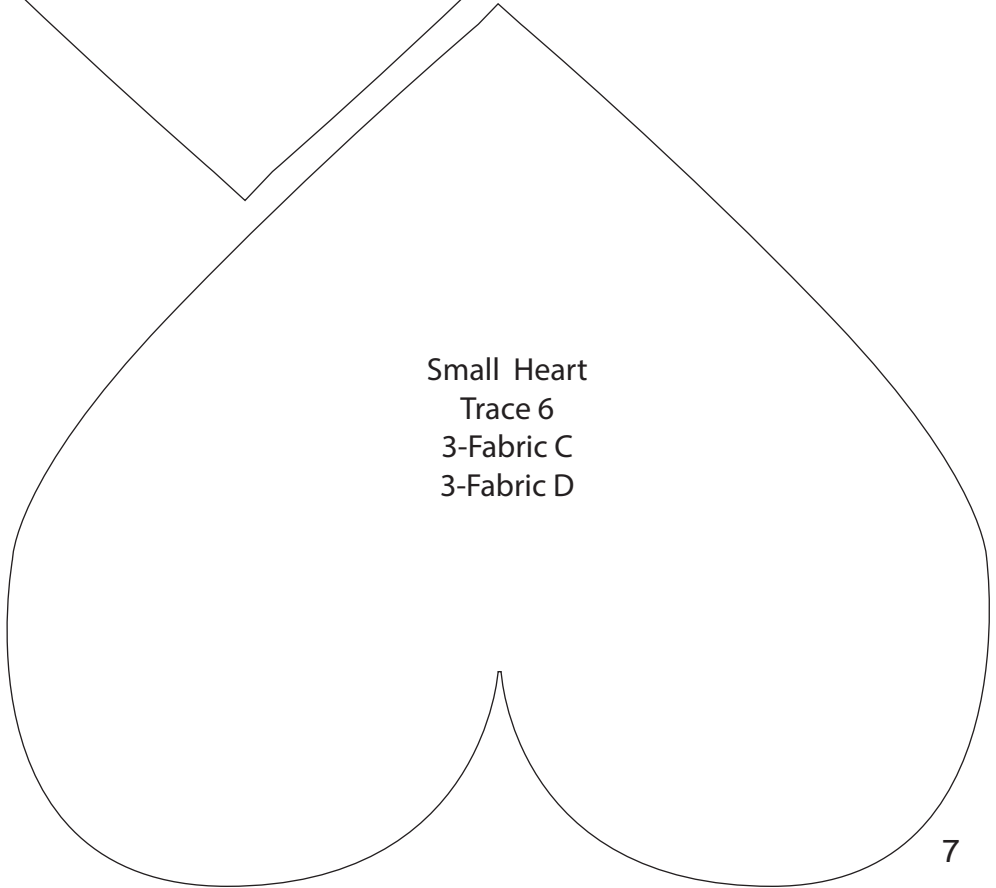
X-Small Heart  
Trace 8  
4-Fabric A  
4-Fabric B



Medium Heart  
Trace 9  
5-Fabric E  
4-Fabric F



Large Heart  
Trace 6  
3-Fabric G  
3-Fabric H



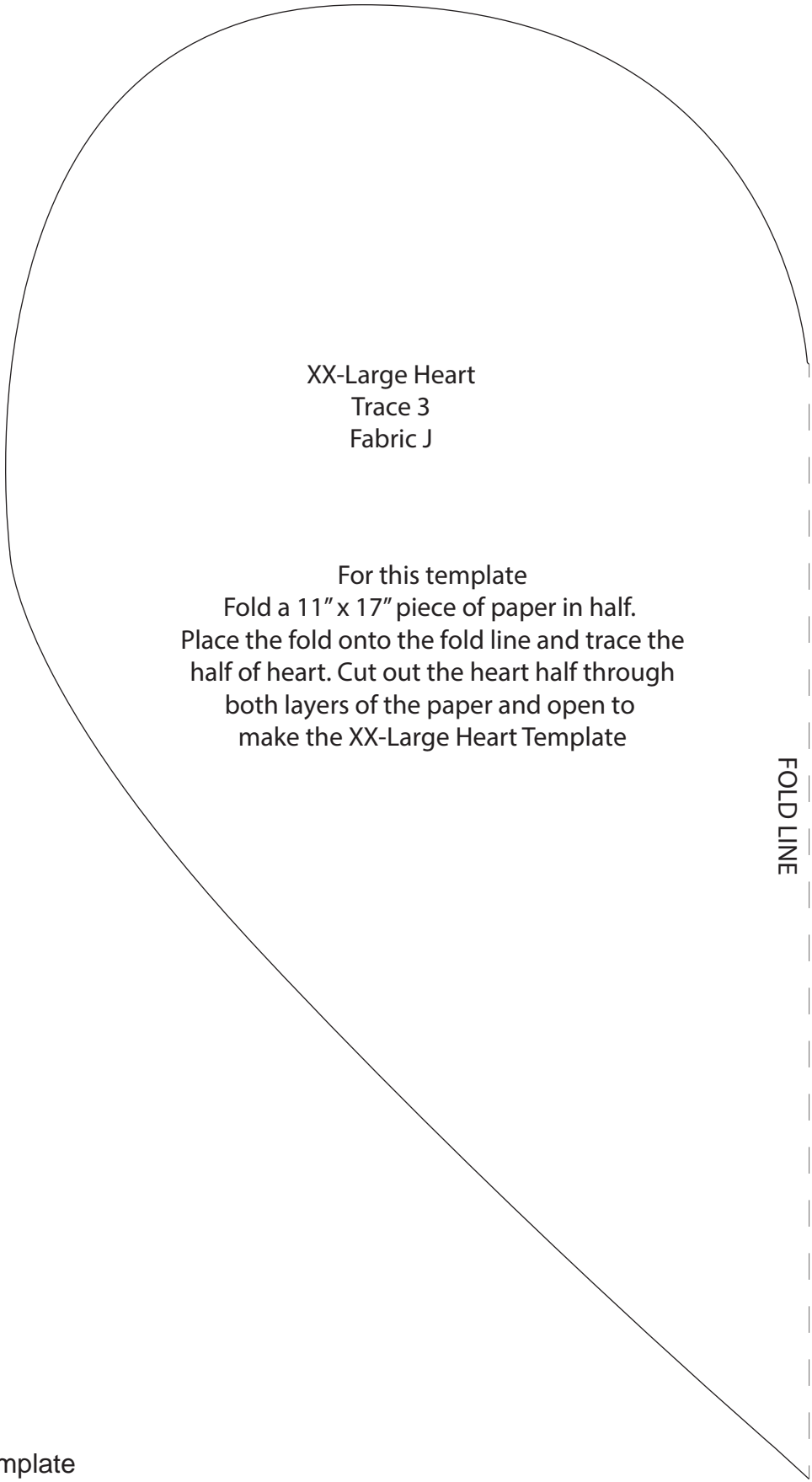
Small Heart  
Trace 6  
3-Fabric C  
3-Fabric D

Quilt Template



X-Large Heart  
Trace 4  
Fabric I





XX-Large Heart  
Trace 3  
Fabric J

For this template  
Fold a 11" x 17" piece of paper in half.  
Place the fold onto the fold line and trace the  
half of heart. Cut out the heart half through  
both layers of the paper and open to  
make the XX-Large Heart Template

FOLD LINE

Quilt Template