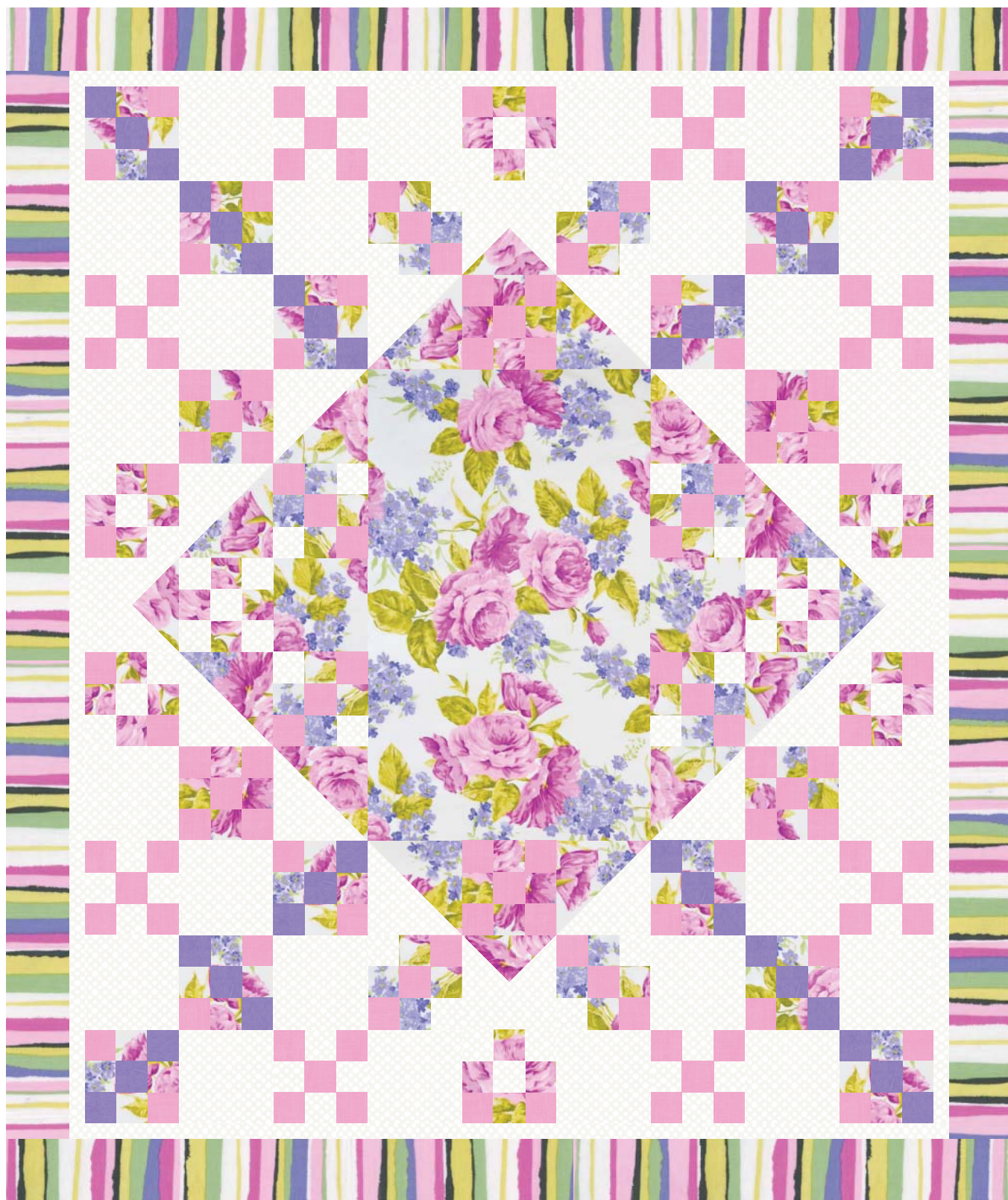


# VERANDA GARDEN



michae|miller FABRICS

LEVEL: ADVANCED BEGINNER | SIZE: 64" W X 76" H | QUILT DESIGNED BY SWIRLY GIRL DESIGNS

© Swirly Girls Design, Inc. Permission is granted to shop owners and teachers to make copies for promotional or educational purposes.  
This pattern may not be reproduced for commercial purposes.

# FABRIC REQUIREMENTS



**PC6676\_WHITE**  
VERANDA  
2 YARDS



**PC6680\_ORCHID**  
PATIO STRIPE  
1 1/2 YARDS



**CX6699\_ROSE**  
HASH DOT  
4 3/4 YARDS (BACKING)



**CX6322\_SNOW**  
DIM DOTS  
2 YARDS



**SC5333\_LILAC**  
COTTON COUTURE  
1/4 YARD



**SC5333\_PINK**  
COTTON COUTURE  
1 YARD

# Veranda

by Swirly Girls Design

64" x 76"

## **Cutting:**

WOF = Width of Fabric

Once Diagonally = 

Twice Diagonally = 

## **From PC6677 White (Floral):**

Cut [1] 18-1/2" x WOF strip; subcut [1] 18-1/2" x 30-1/2" rectangle.

From remainder of strip, cut [1] 7-1/4" square and cut twice diagonally

Cut [2] 7" x WOF strips; from one strip subcut [5] 7" squares.

from remaining strip cut [1] 7" square and [2] 6-1/2" squares

Cut [10] 2-1/2" x WOF strips; from [2] strips subcut [32] 2-1/2" squares (set 8 strips aside for strip piecing)

## **From SC5333 Pink:**

Cut [11] 2-1/2" x WOF strips; from [1] strip subcut [10] 2-1/2" squares (set 9 strips aside for strip piecing)

## **From SC5333 Lilac:**

Cut [3] 2-1/2" x WOF strips

## **From CX6322 Snow:**

Cut [1] 7-1/4" x WOF strip; subcut [1] 7-1/4" square and cut twice diagonally and [1] 7" square.

From remainder of strip, cut [2] 6-7/8" squares and cut once diagonally

Cut [1] 7" x WOF strip; subcut [5] 7" squares

Cut [4] 6-1/2" x WOF strips; subcut [24] 6-1/2" squares

Cut [6] 2-1/2" x WOF strips; from [2] strips subcut [28] 2-1/2" squares (set 4 strips aside for strip piecing)

Cut [7] 1-1/2" x WOF strips (inner border)

## **From PC6680 Orchid:**

Cut [7] 4-1/2" x WOF strips (outer border)

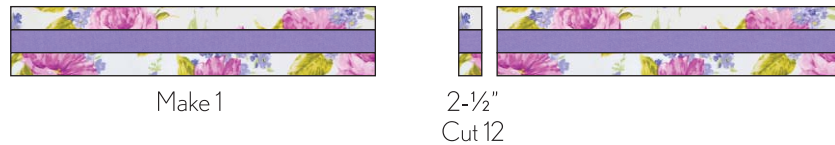
Cut [8] 2-1/2" x WOF strips (binding)

### Piecing:

Sew a 2-1/2" wide Floral strip to a 2-1/2" wide Lilac strip lengthwise as shown. Press toward Lilac. Sew a 2-1/2" wide Pink strip to opposite side of Floral strip. Press toward Pink. Make 2. Crosscut [24] 2-1/2" segments.



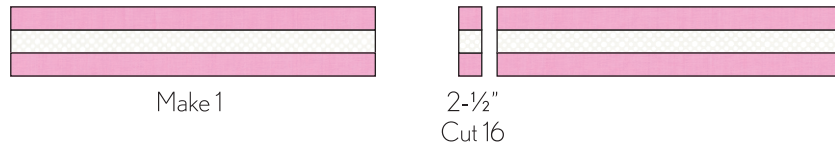
Sew a 2-1/2" wide Floral strip to each side of a 2-1/2" wide Lilac strip lengthwise as shown. Press toward Lilac. Make 1. Crosscut [12] 2-1/2" segments.



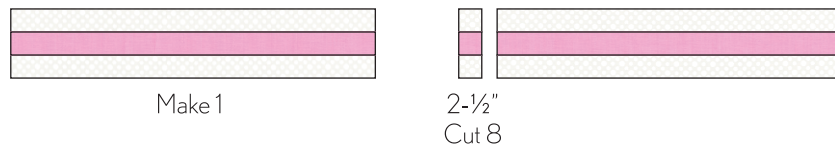
Arrange three segments as shown to form a nine-patch block. Sew together and press in either direction. Make 12.



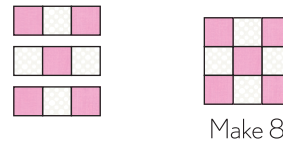
Sew a 2-1/2" wide Pink strip to each side of a 2-1/2" wide Snow strip lengthwise as shown. Press toward Pink. Make 1. Crosscut [16] 2-1/2" segments.



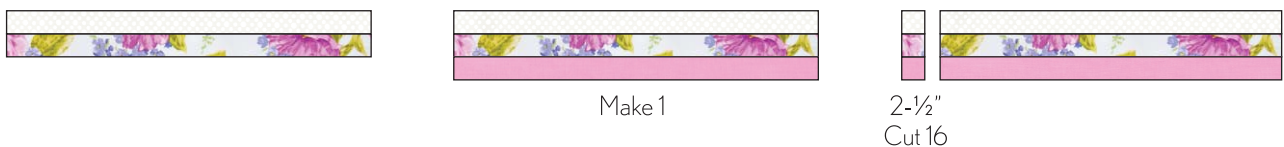
Sew a 2-1/2" wide Snow strip to each side of a 2-1/2" wide Pink strip lengthwise as shown. Press toward Pink. Make 1. Crosscut [8] 2-1/2" segments.



Arrange three segments as shown to form a nine-patch block. Sew together and press in either direction. Make 8.



Sew a 2-1/2" wide Snow strip to a 2-1/2" wide Floral strip lengthwise as shown. Press toward Snow. Sew a 2-1/2" wide Pink strip to opposite side of Floral strip. Press toward Pink. Make 1. Crosscut [16] 2-1/2" segments.





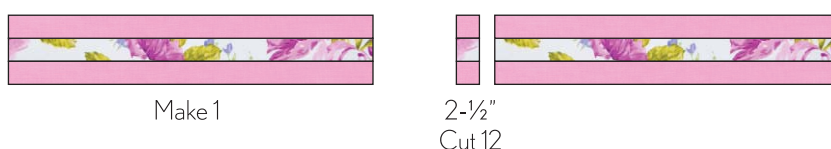
Sew a 2-1/2" wide Floral strip to each side of a 2-1/2" wide Pink strip lengthwise as shown. Press toward Pink. Make 1. Crosscut [14] 2-1/2" segments.



Arrange three segments as shown to form a nine-patch block. Sew together and press in either direction. Make 8. You will use [6] Floral/Pink/Floral segments in next block.



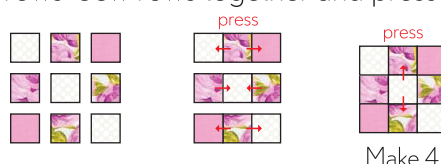
Sew a 2-1/2" wide Pink strip to each side of a 2-1/2" wide Floral strip lengthwise as shown. Press toward Pink. Make 1. Crosscut [12] 2-1/2" segments.



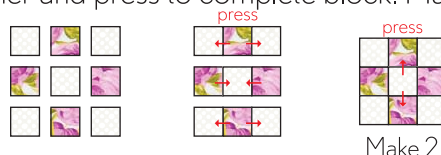
Arrange three segments as shown to form a nine-patch block. Sew together and press in either direction. Make 6.



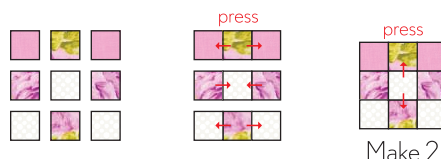
Arrange [3] 2-1/2" Snow squares, [4] 2-1/2" Floral squares and [2] 2-1/2" Pink squares as shown. Sew together into horizontal rows. Press as indicated by arrows. Sew rows together and press to complete block. Make 4.



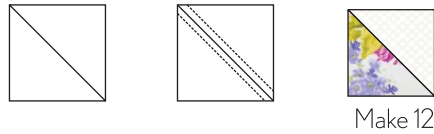
Arrange [5] 2-1/2" Snow squares and [4] 2-1/2" Floral squares as shown. Sew together into horizontal rows. Press as indicated by arrows. Sew rows together and press to complete block. Make 2.



Arrange [2] 2-1/2" Pink squares, [3] 2-1/2" Snow squares and [4] 2-1/2" Floral squares as shown. Sew together into horizontal rows. Press as indicated by arrows. Sew rows together and press to complete block. Make 2.



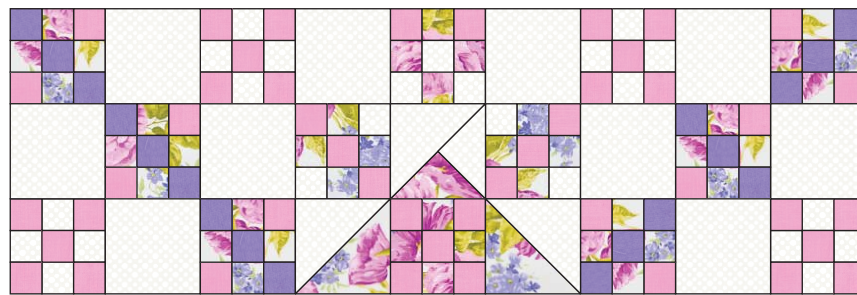
Draw a diagonal line on the wrong side of a 7" Snow square. Place 7" Snow square, right sides together, on a 7" Floral square. Stitch  $\frac{1}{4}$ " on each side of drawn line. Cut along line and press toward Floral print. Trim half-square triangle unit to measure  $6\frac{1}{2}$ " square. Make 12.



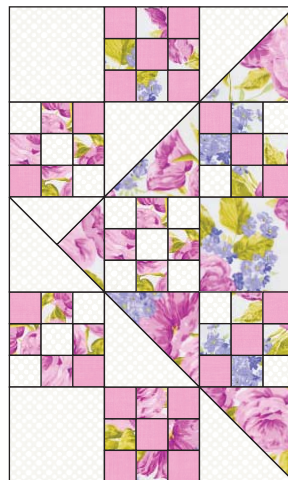
Sew a small Snow triangle to a small Floral triangle along the short side as shown. Press toward Floral triangle. Sew a large Snow triangle on the long edge and press toward large Snow triangle. Make 4.



Arrange nine-patch blocks,  $6\frac{1}{2}$ " squares and pieced triangle blocks as shown. Sew together into horizontal rows. Press away from nine-patch blocks. Sew rows together to complete top/bottom section. Make 2.



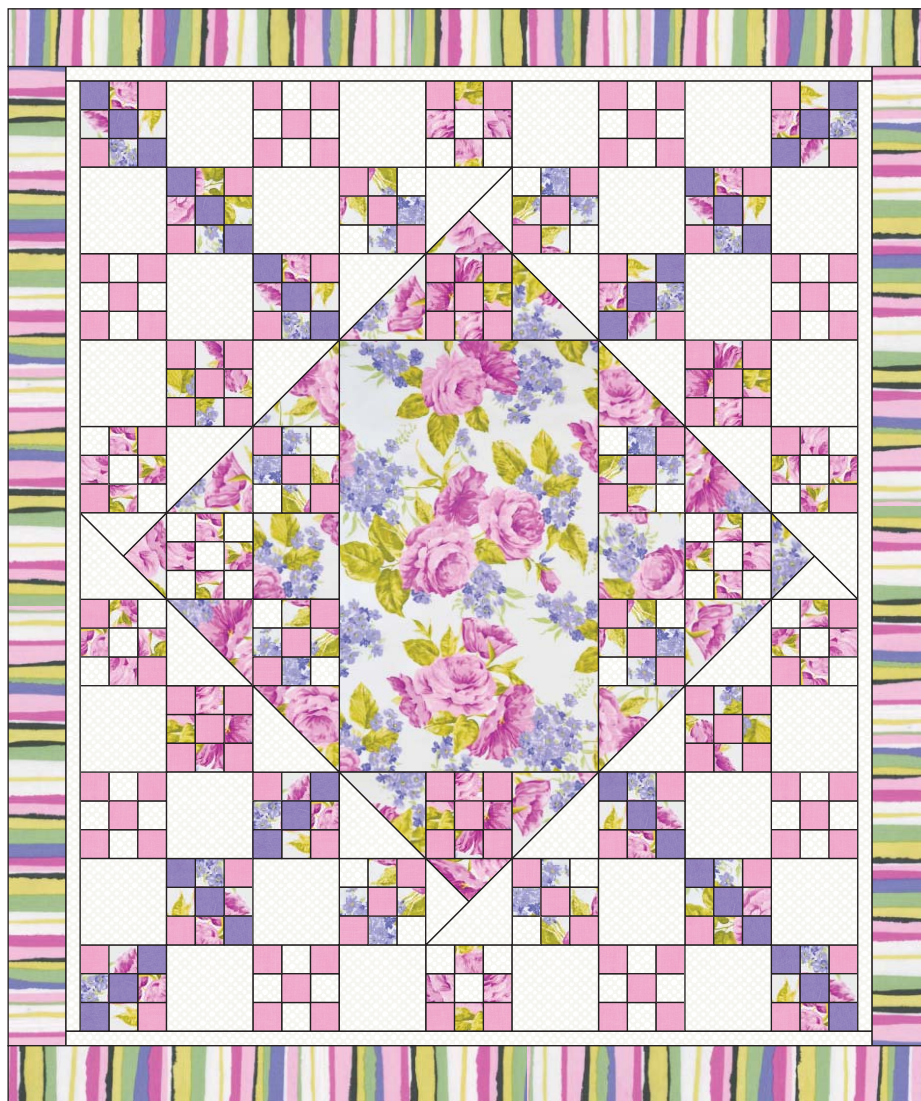
Arrange nine-patch blocks,  $6\frac{1}{2}$ " squares and pieced triangle blocks as shown. Sew together into horizontal rows. Press away from nine-patch blocks. Sew rows together to complete side section. Make 2.



Sew a side section to each side of 18-1/2" x 30-1/2" Floral rectangle. Press toward rectangle. Sew a top/bottom section to the top and bottom of quilt center. Press toward top/bottom sections.

Sew 1-1/2" Snow inner border strips together end to end. Cut [2] strips 66-1/2" long and sew to sides of quilt center. Press toward inner border. Cut [2] strips 56-1/2" long and sew to top and bottom of quilt center. Press toward inner border.

Sew 4-1/2" CX6715 Orchid border strips together end to end. Cut [2] strips 68-1/2" long and sew to sides of quilt center. Press toward border. Cut [2] strips 64-1/2" long and sew to top and bottom of quilt center. Press toward border to complete quilt top.



[www.swirlygirlsdesign.com](http://www.swirlygirlsdesign.com)