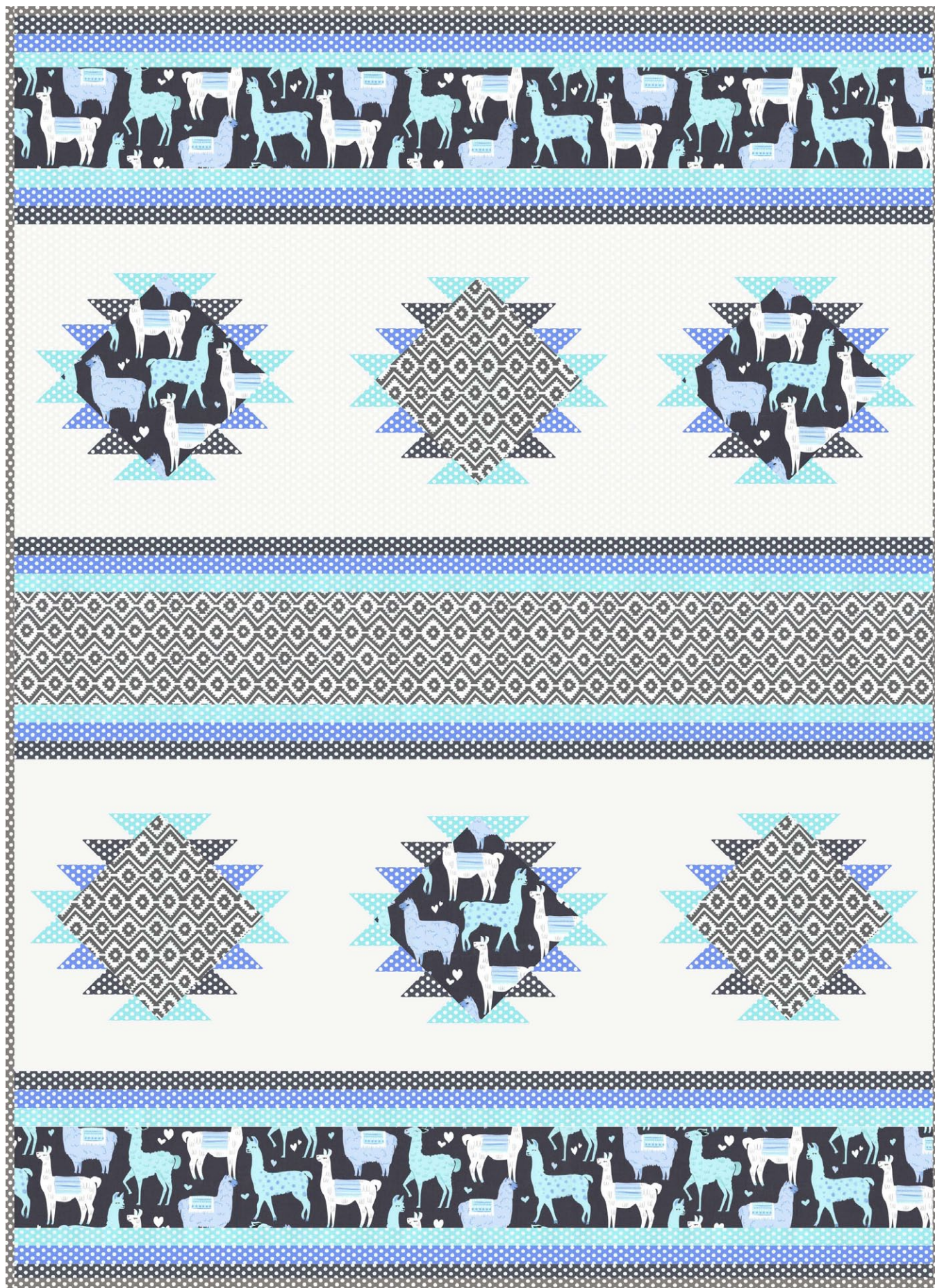


PACKMATES - BOY

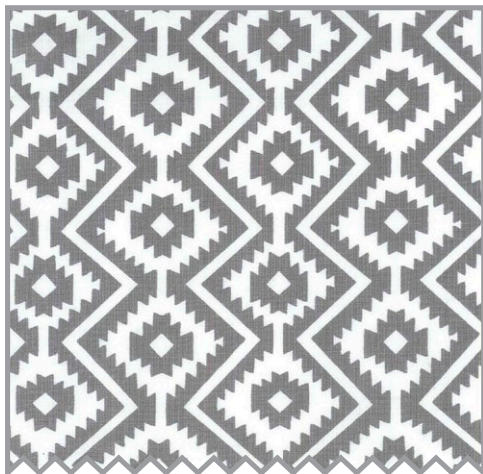


LEVEL: ADVANCED BEGINNER | SIZE: 51" W X 70" H | QUILT DESIGNED BY HEIDI PRIDEMORE

FABRIC REQUIREMENTS



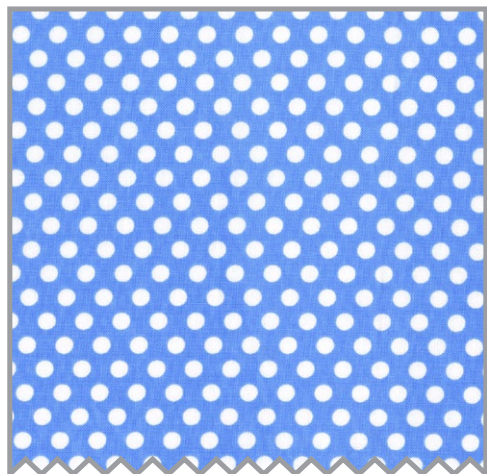
CX6710 Blue
PACKMATES
1 yard



CX6713 COIN
EDUARDO
1 1/2 yards



CX5518 CLOUD
KISS DOT
1 1/3 yards



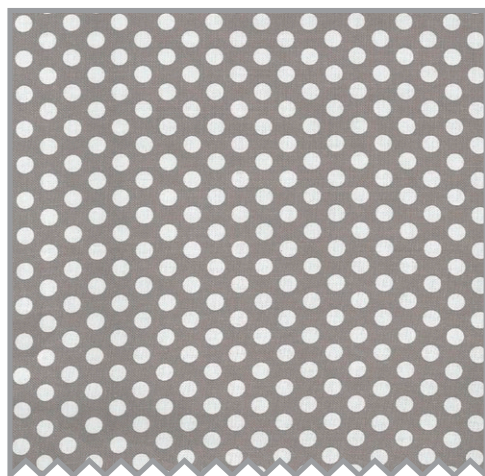
CX5518 Boy
KISS DOT
5/8 yard



CX5518 Aqua
KISS DOT
2/3 yard



CX5518 Gray
KISS DOT
5/8 yard



CX5518 STONE
KISS DOT
1/2 yard



CX5518 CLOUD
KISS DOT
3 1/2 yards for backing

"Packmates - Boy"
 Quilt designed by Heidi Pridemore
 Size: 51" x 70"

Materials

	Fabric	Yardage	Cutting
(A)	CX6710 Blue PACKMATES	1 yard	Cut three 8 ½" squares on point with the print. Cut three 6 ½" x WOF strips. Sew the strips together, end to end with diagonal seams, and cut two 6 ½" x 51 ½" strips.
(B)	CX6713 COIN EDUARDO	1 1/2 yards	Cut one 6 ½" x 51 ½" strip from the length of fabric (LOF). Cut three 8 ½" squares on point with the print from the remaining fabric.
(C)	CX5518 CLOUD KISS DOT	1 1/3 yards	Cut one 18 ¼" x WOF strip. Sub-cut the strip into two 18 ¼"squares. Cut the squares across both diagonals to make eight corner setting triangles. Cut one 9 ¾" x WOF strip. Sub-cut the strip into four 9 ¾"squares. Cut the squares across one diagonal to make eight side setting triangles. Cut four 2 ⅞" x WOF strips. Sub-cut the strips into forty eight 2 ⅞" squares. Cut two 2 ½" x WOF strips. Sub-cut the strips into twenty-four 2 ½" squares.
(D)	CX5518 Boy KISS DOT	5/8 yard	Cut one 2 ⅞" x WOF strip. Sub-cut the strip into twelve 2 ⅞"squares. Cut nine 1 ½" x WOF strips. Sew the strips together, end to end with diagonal seams, and cut six 1 ½" x 51 ½" strips.
(E)	CX5518 Aqua KISS DOT	2/3 yard	Cut two 2 ⅞" x WOF strip. Sub-cut the strip into twenty-four 2 ⅞" squares. Cut nine 1 ½" x WOF strips. Sew the strips together, end to end with diagonal seams, and cut six 1 ½" x 51 ½" strips.
(F)	CX5518 Gray KISS DOT	5/8 yard	Cut one 2 ⅞" x WOF strip. Sub-cut the strip into twelve 2 ⅞"squares. Cut nine 1 ½" x WOF strips. Sew the strips together, end to end with diagonal seams, and cut six 1 ½" x 51 ½" strips.
(G)	CX5518 STONE KISS DOT	1/2 yard	Cut six 2 ½" x WOF strips for the binding.
Back- ing	CX5518 CLOUD KISS DOT	3 1/2 yards	Cut two 59" x WOF strips. Piece the strips together and trim to make the 59" x 78" pieced backing.

ALSO NEEDED: 59" x 78" batting, threads to match, scissors, straight pins, acrylic ruler, rotary cutter, and mat.

Disclaimers

This pattern is provided as a courtesy to quilt stores, catalogs, and quilters. Michael Miller Fabrics, LLC is not responsible for the accuracy of any kits packaged to accompany this pattern. Please direct any inquiries to the kit maker.

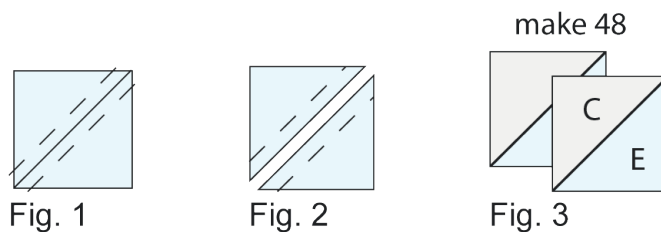
Yardage requirements for this pattern may allow for excess yardage to accommodate specific placement of motifs or to allow for any fussy-cutting to achieve the finished quilt design.

While every attempt has been made to give accurate measurements, yardage requirements, and construction directions; this does not allow personal variations in measuring, cutting, and or sewing. The enclosed directions were used in the construction of the original quilt.

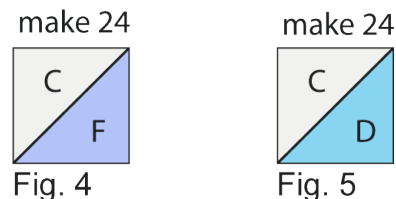
Please Note: All strips are cut across the width of fabric (WOF) from selvage to selvage edge unless otherwise noted.

Directions

1. Place one $2\frac{7}{8}$ " Fabric E square on top of one $2\frac{7}{8}$ " Fabric C square, right sides together. Draw a line across the diagonal of the top square (Fig. 1). Sew $\frac{1}{4}$ " away from each side of the drawn diagonal line (Fig. 1). Cut the two squares apart on the drawn diagonal line (Fig. 2) to make two EC units (Fig.3). Trim the EC units to measure $2\frac{1}{2}$ " square. Repeat to make forty-eight EC units total.



2. Repeat Step 1 using twelve $2\frac{7}{8}$ " Fabric F squares and twelve $2\frac{7}{8}$ " Fabric C squares to make twenty-four $2\frac{1}{2}$ " FC units (Fig. 4).
3. Repeat Step 1 using twelve $2\frac{7}{8}$ " Fabric D squares and twelve $2\frac{7}{8}$ " Fabric C squares to make twenty-four $2\frac{1}{2}$ " DC units (Fig. 5).



4. Sew four $2\frac{1}{2}$ " Fabric C squares, eight EC units, four FC units and four DC units and one Fabric A square together to make one A-Block (Fig. 6). Repeat to make three A-blocks total.
5. Repeat Step 4 using twelve $2\frac{1}{2}$ " Fabric C squares, twenty-four EC units, twelve FC units, twelve DC units and three 12" Fabric B squares together to make three B-blocks (Fig. 7).

Quilt Top Assembly

(Follow the Quilt Layout while assembling the quilt top.)

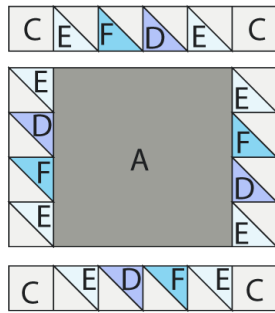


Fig. 6 make 3

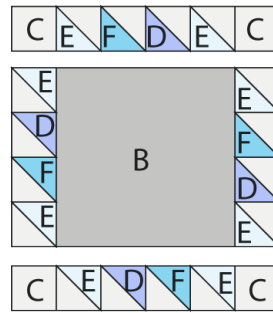
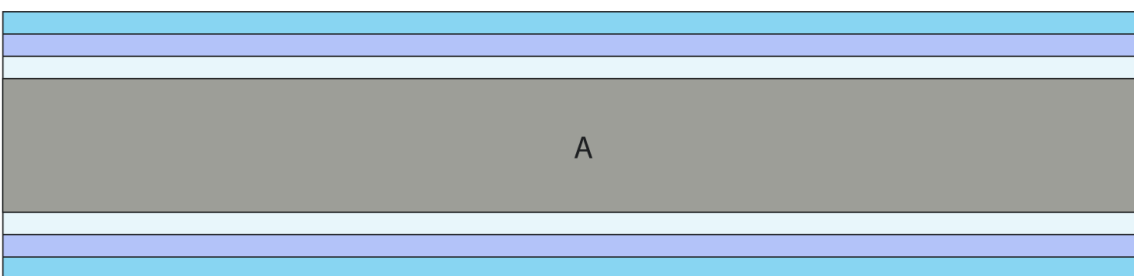
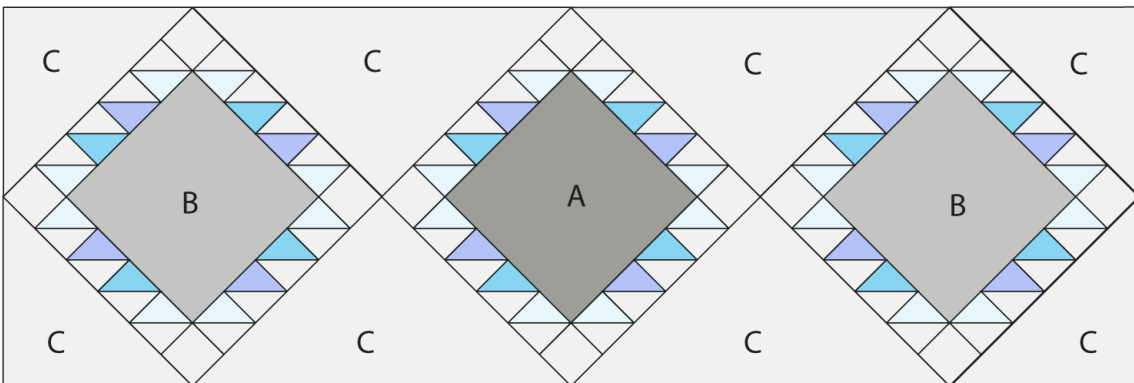
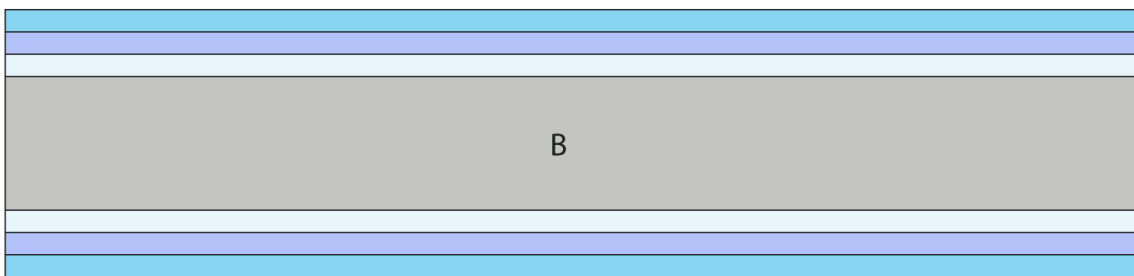
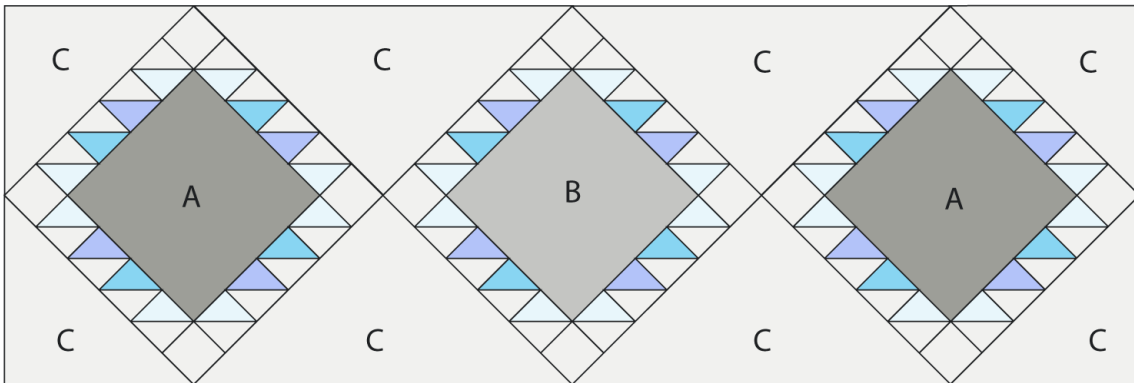
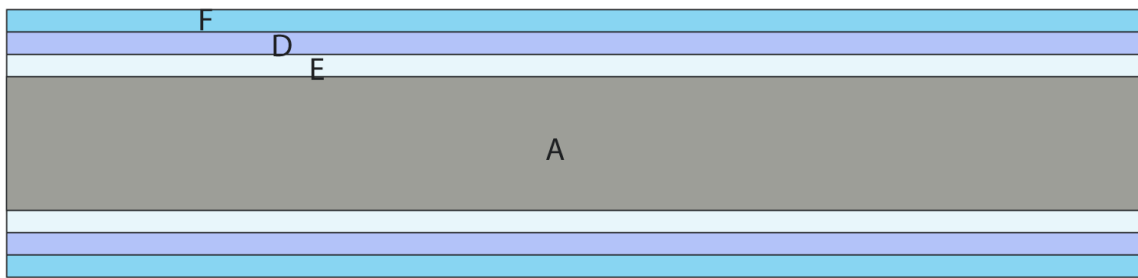


Fig. 7 make 3

6. Sew one 1 ½" x 51 ½" Fabric F strip, one 1 ½" x 51 ½" Fabric D strip and one 1 ½" x 51 ½" Fabric E strip together, lengthwise, to make one FDE strip. Repeat to make six FDE strips total.
7. Sew one FDE strip to the top and to the bottom of one 6 ½" x 51 ½" Fabric A strip, lengthwise, to make Row One. Repeat to make Row Five. Pay attention to the orientation of the FDE strips.
8. Sew two A-blocks, one B-block, four corner setting triangles and four side setting triangles together to make Row Two. Note: The A-blocks and B-blocks are on point.
9. Sew one FDE strip to the top and bottom of one 6 ½" x 51 ½" Fabric B strip, lengthwise, to make Row Three. Pay attention to the orientation of the FDE strips.
10. Sew two B-blocks, one A-block, four corner setting triangles and four side setting triangles together to make Row Four. (Note: The A-blocks and B-blocks are on point.)
11. Sew the five rows together, in numerical order, to make the quilt top.
12. Layer and quilt as desired.
13. Sew the six 2 ½" x WOF Fabric G strips together, end-to-end with 45-degree seams, to make the binding. Fold this long strip in half lengthwise with wrong sides together and press.
14. Bind as desired.



Quilt Layout