

COTTON COUTURE TEXTURE SAMPLER



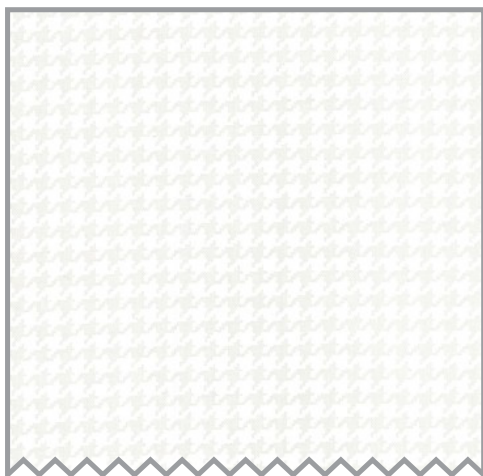
LEVEL: **INTERMEDIATE** | SIZE:36" W X 56" H | QUILT DESIGNED BY MARINDA STEWART

FABRIC REQUIREMENTS

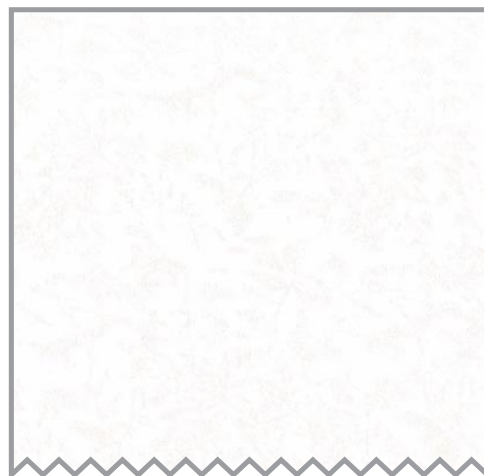
45" X 60" HIGH LOFT POLYESTER BATTING



SC5333 Bright White
Cotton Couture
1 ½ yards



CX4835 Snow
Tiny Houndstooth
¼ yard



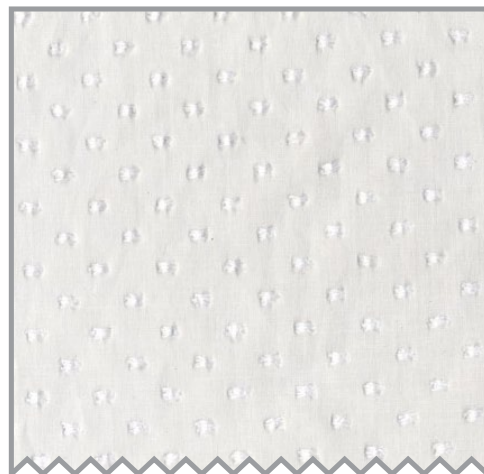
CM0376 Snow
Fairy Frost
3/8 yard



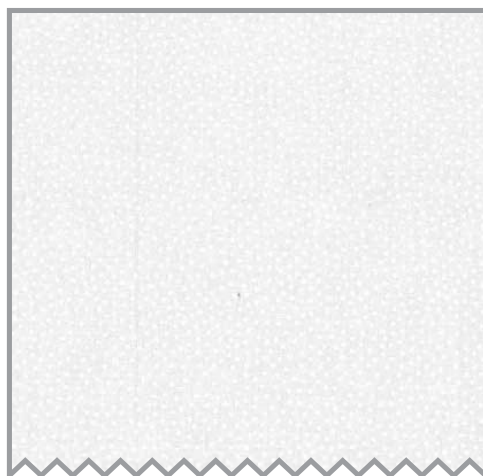
CX5518 Snow
Kiss Dot
3/8 yard



CX5514 Snow
Pinhead
¼ yard



Clip Dot White
¼ yard



CX1065 Snow
Garden Pindot
3/8 yard

"Cotton Couture Texture Sampler"
 Quilt designed by Marinda Stewart
 Size: 36" x 56" Skill Level: Intermediate

Materials

Fabric	Yardage	Cutting
SC5333 Bright White Cotton Couture	1 ½ yards	(9) 4 ½" square (8) 2 ½" square (1) 5 ½" x 8 ½" (1) 5" x 32 ½" (2) 5 ½" square (4) 6" squares (1) 4 ½" x 9" (1) 5" x 8 ½" (3) 1 ½" x 14" – bias (1) 4 ½" x 9 ½" (4) 2" squares (4) 4" circles (5) 1 ¼" x 4 ½" (2) 3 ½" x 50 ½" * (2) 3 ½" x 36 ½" (5) 2 ½" x W.O.F. *
CX4835 Snow Tiny Houndstooth Combo #1	¼ yard	(16) 1 ½" x 4 ½" (16) 1 ½" x 6 ½"
CM0376 Snow Fairy Frost Combo #1	3/8 yard	(16) 1 ½" x 6 ½" (16) 1 ½" x 8 ½"
CX5518 Snow Kiss Dot Combo #1	3/8 yard	(16) 1 ½" x 8 ½" (16) 1 ½" x 10 ½"
CX5514 Snow Pinhead Combo #2	¼ yard	(14) 1 ½" x 4 ½" (14) 1 ½" x 6 ½"
Clip Dot White Combo #2	¼ yard	(14) 1 ½" x 4 ½" (14) 1 ½" x 8 ½"
CX1065 Snow Garden Pindot Combo #2	3/8 yard	(14) 1 ½" x 8 ½" (14) 1 ½" x 10 ½"
Also Needed: 45" x 60" high loft polyester batting, threads to match, scissors, straight pins, rotary cutter, acrylic ruler, mat, crewel embroidery needle, and #5 perle cotton - white.		
* Pieced for length		

Disclaimers

This pattern is provided as a courtesy to quilt stores, catalogs, and quilters. Michael Miller Fabrics, LLC is not responsible for the accuracy of any kits packaged to accompany this pattern. Please direct any inquiries to the kit maker.

Yardage requirements for this pattern may allow for excess yardage to accommodate specific placement of motifs or to allow for any fussy-cutting to achieve the finished quilt design.

While every attempt has been made to give accurate measurements, yardage requirements, and construction directions; this does not allow personal variations in measuring, cutting, and or sewing. The enclosed directions were used in the construction of the original quilt.

The center of each 10" log cabin block is a different 4" square of textured fabric. Each block features a specific process. Eight blocks use combo #1 fabric. Seven blocks use combo #2 fabrics. Three of the 4" blocks use a lightweight batting to create the finished texture. The remaining blocks are pieced, gathered, pleated, tucked, and puckered. The textured blocks should be made first. Add the fabric borders next to finish the blocks to 10 1/2" before being sewn into the quilt top and adding the final border.

Directions

1. Row #1 - Block 'A' - Ruching - Run a gathering stitch across the top and bottom of one 5 1/2" x 8 1/2" piece. Pull thread to gather. Adjust gathers to fit the top and bottom of one 4 1/2" square. Stitch in place. Pleat in fullness with a tiny pleat on each side. Finish with combination #1 fabrics (listed at the end of the techniques).
Row #1 - Block 'B' - Prairie Point pinwheel - to make one prairie point - fold (1) 2 1/2" square in half horizontally. Fold each side of the folded edge to the center to make a triangle. Press. Make (4). Sew one prairie point between (2) 2 1/2" squares. Make (2). Join the two prairie point units together into a 4-patch block adding the remaining (2) prairie points. Arrange the prairie points to radiate in a pinwheel pattern as shown. Finish block with combination #2 fabrics.
Row #1 - Block 'C' - Gathered pom-pom - Join 5" ends of one 5" x 32 1/2" strip. Press seam open. Divide fabric into (4) equal parts and mark. Gather fabric along the 32" side. Pull gathers. Match each mark to one corner of a 4 1/2" square. Adjust gathers evenly. Topstitch in place 1/8" from the edge. Pin block to a stable surface to hold in place. Hand gather the remaining inside edge of the 32" strip into the center of the square. Adjust gathers evenly. Secure fabric tightly with a rubber band. Using a double length of thread in a hand sewing needle, secure the thread close to the rubber band. Wrap the thread very tightly several times around the gathers. Knot off. Cut off rubber band. Trim pom-pom to 1" - 1 1/2" using pink-ing shears. Finish Block 'C' with combination #1.
2. Row #2 - Block 'A' - Random pin-tuck. Randomly fold one 6" square. Stitch 1/8" from fold. Press. Repeat 3-4 times placing the fold in different directions and in different areas of the block as shown. Trim to 4 1/2". Finish block with Combo #2.
Row #2 - Block 'B' - puckered grid - adjust the upper tension on the sewing machine to lightly pucker the fabric. Stitch a 5 1/2" square in a 4-row grid from top to bottom and side to side. Trim to 4 1/2". Finish block with Combo #1.
Row 2 - Block 'C' - Twisted pleats - pleat one 4 1/2" x 8 1/2" piece of fabric each 1/2" with a 1/4" deep pleat across the 8 1/2" width of the fabric. Attach pleated fabric to a 4 1/2" foundation square. Sew the pleats in the same direction at the top and bottom of the block. Gently fold the pleats in the opposite direction in the middle. Pin in place. Stitch to hold. Remove pins. Trim block to an accurate 4 1/2". Finish with combo #2.
3. Row # 3 - Block 'A' - make (4) yo-yo using a 4" circle for each. Fold under a scant 1/8" hem on the outer edge. Secure hem using a running stitch. Pull thread tightly to gather hemmed circle. Knot off. Tack (4) yo-yo's together at the top, bottom, and sides of each. Mount in the center of a 4 1/2" foundation square. Finish block with combo #1.
Row #3 - Block 'B' - All over meander using Texture Magic. Layer (1) 6" square of white, batting,

and Texture Magic. Meander free motion stitch throughout the square through all layers. Following manufacturer's directions, steam the Texture Magic to pucker the fabric. Trim to an accurate 4 1/2" square. Finish with combo #2.

Row #3 - Block 'C' - Inset Prairie points - make (4) prairie points using 2" squares and the directions in Row #1 Block 'B'. Inset Prairie points randomly between 1 1/4" x 4 1/2" strips as shown. Trim to 4 1/2". Finish block using combo #1.

4. Row #4 - Block 'A' - Double stitched grid with Texture Magic. Using a 6" square following manufacturer's directions draw a diagonal grid onto Texture Magic. Layer fabric, batting, and Texture Magic. The drawn lines are the stitching guide. Stitch 1/8" on each side of each drawn line to create a double stitched grid. The lines should be approximately 1/4" apart. Following directions for the Texture Magic, steam the block to create the textured grid. Trim block to 4 1/2". Finish with combo #2.

Row #4 - Block 'B' - Biscuit block. Pleat one 5 1/2" square to fit one 4 1/2" foundation square. Place one pleat north, south, east, and west in the center on the sides of the foundation block. Topstitch in place 1/8" from the edge. Finish the block with combo #1.

Row #4 - Block 'C' - Mult-row ruching - run 5 rows of gathering stitches evenly spaced between the top and bottom edges of one 5 1/2" x 8 1/2" piece. Gather to fit one 4 1/2" foundation piece. Topstitch all four sides to secure. Trim (if needed) to 4 1/2" square. Finish block with combo #2.

5. Row #5 - Block 'A' - Tiered ruffles - gather (3) 1 1/2" x 14" bias pieces to fit evenly spaced on one 4 1/2" foundation piece. Double top stitch gathered edges to finish. The bias fabric will not ravel or fray. Finish block with combo #1. Make sure ruffles do not get caught in the bottom border.

Row #5 - Block 'B' - Random double-needle stitching - layer one 6" block with one 6" piece of batting. Using a double needle in the sewing machine randomly stitching serpentine lines. The batting makes the stitching look like it's corded. Trim block to 4 1/2" square. Finish block with combo #2.

Row #5 - Block 'C' - Knotted overlay block. Turn under 1/8" hem. Press. Repeat. Topstitch hem on each 9 1/2" side of our 4 1/2" x 9 1/2" piece. Tie an overhand knot in the center of the strip. Mount the top raw edge and the bottom raw edge on a 4 1/2" foundation piece with the knot in the center. Finish block with combo #1.

6. Finish combo #1 blocks as follows: Sew one CX4835 1 1/2" x 4 1/2" to the top and bottom. Sew one CX4835 1 1/2" x 6 1/2" piece to each side. Sew one CM0376 1 1/2" x 6 1/2" piece to the top and bottom. Sew one CM0376 1 1/2" x 8 1/2" piece to each side. Sew one CX5518 1 1/2" x 8 1/2" piece to each side. Sew one CX5518 1 1/2" x 10 1/2" piece to each side. Row #1 A/C, Row #2 B, Row #3 A/C, Row #4 B, Row #5 A/C. Finish combo #2 blocks as follows - Sew one CX5514 1 1/2" x 4 1/2" piece to the top and bottom. Sew one CX5514 1 1/2" x 6 1/2" piece to each side. Sew one Clip Dot 1 1/2" x 6 1/2" piece to the top and bottom. Sew one Clip Dot 1 1/2" x 6 1/2" to each side. Sew one CX1065 1 1/2" x 8 1/2" piece to the top and bottom. Sew one CX1065 1 1/2" x 10 1/2" piece to each side. Row #1 B, Row #2 A/C, Row #3 B, Row #4 A/C, Row #5 B.

7. Sew rows together in the order the texture samples were made. Make (5) rows of three blocks each.

8. Sew the (5) rows together to make one 30 1/2" W x 50 1/2" quilt top.

9. Sew one SC5333 White 3 1/2" x 50 1/2" piece (pieced for length) to each side of the quilt. Sew one SC5333 3 1/2" x 36 1/2" piece to the top and bottom.

10. Layer backing, batting, and quilt top. Baste.

11. Quilt as desired in and around the 4" textured blocks.

12. Bind quilt using SC5333 White 2 1/2" x W.O.F. strips pieced as needed for length.

ruching



prairie point
pinwheel



gathered
pom pom



random
pin tucks



puckered
stitch grid



twisted
pleats



yo-yos



allover
meander



inset prairie
points



diagonal
grid



biscuit



multi row
ruching



tiered
ruffles



random
double needle
stitching



knotted
overlay

