

# LA VIÑA



michae|miller FABRICS

SIZE: 60" W X 60" H | QUILT DESIGNED BY SWIRLY GIRLS DESIGN

© Swirly Girls Design, Inc. Permission is granted to shop owners and teachers to make copies for promotional or educational purposes.  
This pattern may not be reproduced for commercial purposes.



# FABRIC REQUIREMENTS



**CX6715\_GRAPE**  
ESME  
2 1/4 YARDS  
(INCLUDES BINDING)



**SC5333\_ISLE**  
COTTON COUTURE  
3/8 YARD



**SC5333\_LILAC**  
COTTON COUTURE  
3/8 YARD



**SC5333\_BRIGHT WHITE**  
COTTON COUTURE  
1 1/2 YARDS



**CX6713\_KRYPTONITE**  
EDUARDO  
1/8 YARD



**CX6713\_APRICOT**  
EDUARDO  
1/8 YARD



**CX6713\_CORAL**  
EDUARDO  
1/8 YARD



**CX6713\_LILAC**  
EDUARDO  
1/8 YARD



**CX6714\_GRAPE**  
ESTELLA  
4 YARDS (BACKING)

# La Vina

by Swirly Girls Design

60" x 60"

## Cutting:

WOF = Width of Fabric

### **From CX6715 Grape:**

Cut [3] 6-1/2" x WOF strips; subcut [16] 6-1/2" squares

Cut [6] 6-1/2" x WOF strips; set aside for borders

Cut [7] 2-1/2" x WOF strips; set aside for binding

### **From CX6713 Apricot, Coral, Kryptonite and Lilac:**

Cut [1] 2" x WOF strip of each

### **From SC5333 Bright White:**

Cut [1] 4" x WOF strip; subcut [4] 4" squares

Cut [13] 3-1/2" x WOF strips; subcut [24] 3-1/2" x 6-1/2" rectangles, [52] 3-1/2" squares,  
and [4] 3-1/2" x 36-1/2" rectangles

Cut [4] 2" x WOF strips

### **From SC5333 Isle:**

Cut [4] 3-1/2" x WOF strips; subcut [24] 3-1/2" x 6-1/2" rectangles

### **From SC5333 Lilac:**

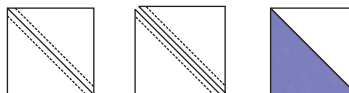
Cut [1] 4" x WOF strips; subcut [4] 4" squares and [4] 3-1/2" squares

Cut [4] 3-1/2" x WOF strips; subcut [44] 3-1/2" squares

## Piecing:

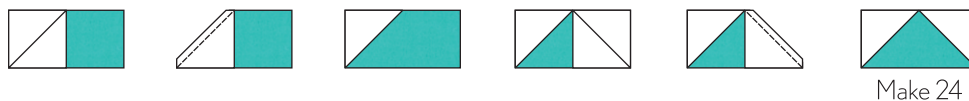
### **Half-Square Triangle Units:**

Draw a diagonal line on the wrong side of [4] 4" SC5333 Bright White squares. With right sides together, place a 4" SC5333 Bright White square on top of a 4" SC5333 Lilac square. Stitch 1/4" on each side of drawn line. Cut along drawn line and press toward SC5333 Lilac. Square up unit to measure 3-1/2" square. Repeat to make a total of [8] Bright White/Lilac half-square triangle units.



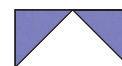
Make 8

Draw a diagonal line from corner to corner on the wrong side of [48] 3-1/2" SC5333 Bright White squares. With right sides together, place a 3-1/2" Bright White square on the corner of a 3-1/2" x 6-1/2" SC5333 Isle rectangle and stitch diagonally on the drawn line (see diagram below). Trim 1/4" from stitching line and press toward Bright White. Repeat to make a total of [24] Bright White/Isle flying geese units.



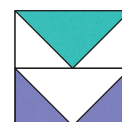
Make 24

Draw a diagonal line from corner to corner on the wrong side of [48] 3-1/2" SC5333 Lilac squares. Following instructions above, make [24] Lilac/Bright White flying geese units.



Make 24

Sew flying geese units together, as shown at right, to create star point units. Press seam open. Make 24.



Make 24

Sew a 2" CX6713 Apricot strip lengthwise to a 2" SC5333 Bright White strip. Press toward Apricot. Crosscut [18] 2" x 3-1/2" segments from strip set. Sew [2] segments together as shown. Press seam open. Repeat to make a total of [9] Apricot/Bright White four-patch blocks.



2"  
Cut 18



Make 9

Repeat with remaining 2" strips to make [9] Coral/Bright White four-patch blocks; [9] Kryptonite/Bright White four-patch blocks and [9] Lilac/Bright White four-patch blocks.



Make 9

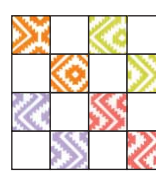
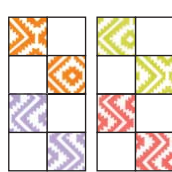
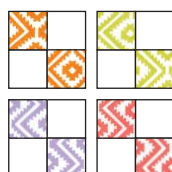


Make 9



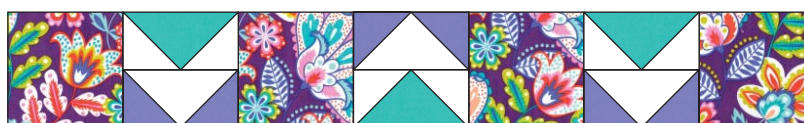
Make 9

Sew [4] four-patch blocks together as shown below. Press seam open. Repeat to make a total of [9] 16-patch blocks.



Make 9

Arrange [4] 6-1/2" CX6715 Grape squares and [3] star point units as shown below. Make sure to turn star point units the correct direction. Sew together and press seams toward 6-1/2" Grape squares. Make [4] rows.



Make 4

Arrange [4] star point units and [3] 16-patch blocks as shown below. Make sure to turn star point units the correct direction. Sew together and press seams toward four-patch blocks. Make [2] rows.



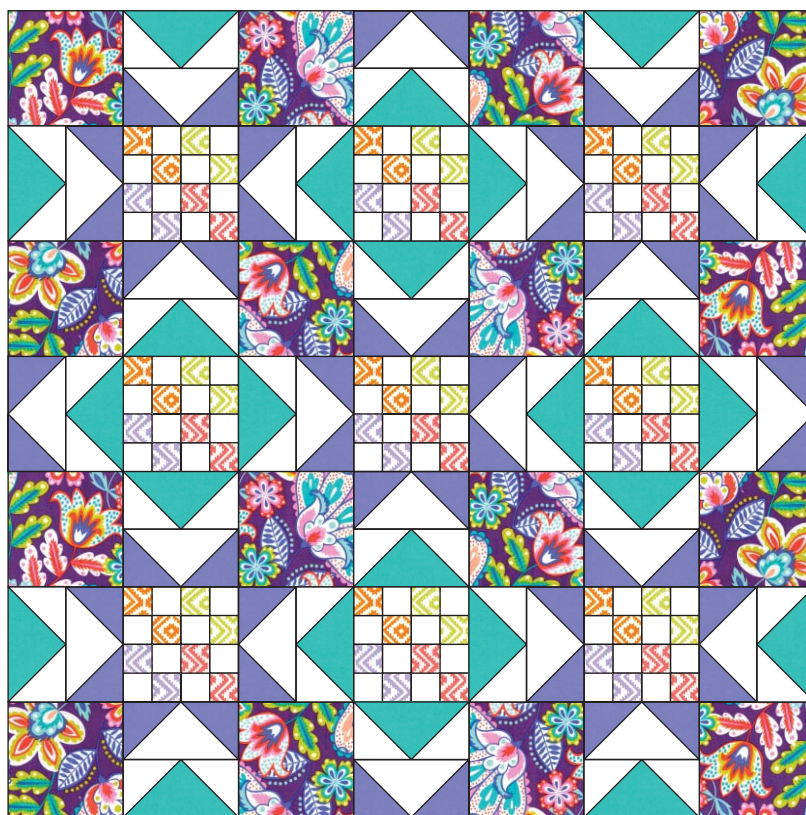
Make 2

Arrange [4] star point units and [3] 16-patch blocks as shown below. Make sure to turn star point units the correct direction. Sew together and press seams toward four-patch blocks. Make [1] row.



Make 1

Sew rows together as shown below. Make sure to rotate rows in the correct direction. Press seams open to complete quilt center.



Sew a Lilac/Bright White half-square triangle unit to each end of a 3-1/2" x 36-1/2" Bright White rectangle. Press toward Bright White rectangle. Make [4] inner borders.



Make 4



Sew a 3-1/2" Bright White square to each end of [2] inner borders. Press toward half-square triangle.



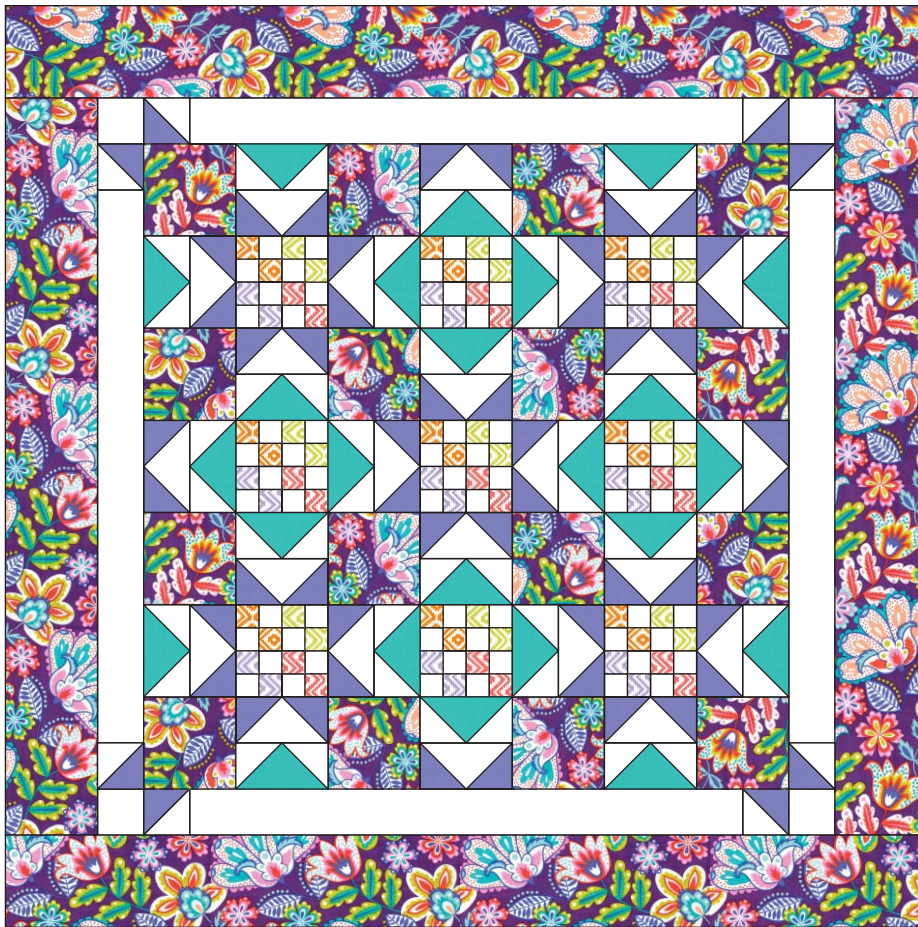
Top/Bottom Inner Border  
Make 2

Sew an inner border to each side of quilt center as shown below. Press toward inner border.

Sew a top/bottom inner border strip to top and bottom of quilt center as shown below.

Press toward top/bottom inner border.

Sew 6-1/2" CX6715 Grape border strips together end to end. Cut [2] strips 48-1/2" long and sew to sides of quilt center. Press toward border. Cut [2] strips 60-1/2" long and sew to top and bottom of quilt center. Press toward border to complete quilt top.



[www.swirlygirlsdesign.com](http://www.swirlygirlsdesign.com)