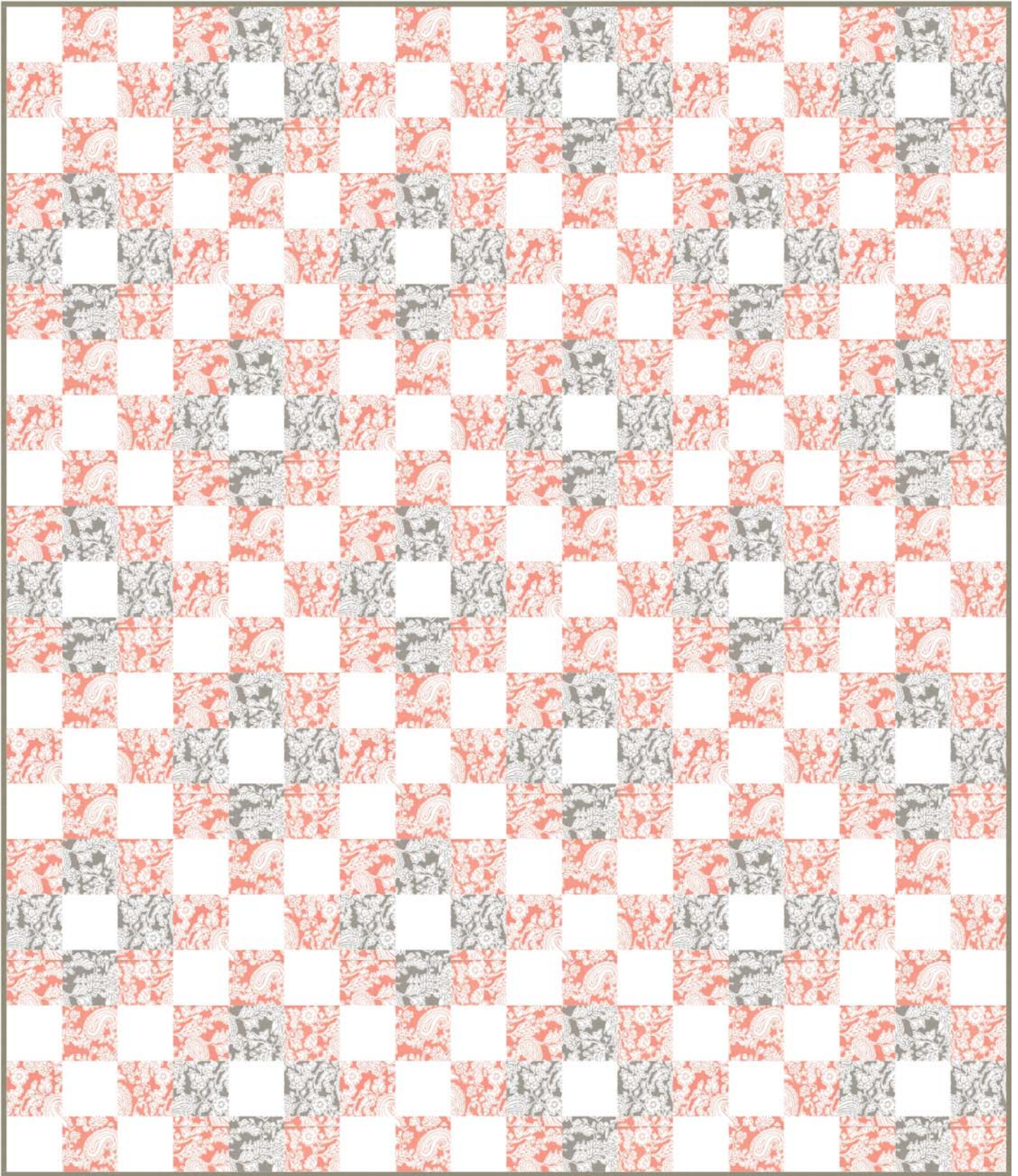


# CHATHAM SQUARE



michael miller FABRICS

SIZE: 90" W X 105" H | QUILT DESIGNED BY SWIRLY GIRLS DESIGN

© Swirly Girls Design, Inc. Permission is granted to shop owners and teachers to make copies for promotional or educational purposes. This pattern may not be reproduced for commercial purposes.

# FABRIC REQUIREMENTS



**PC6694\_MUD**  
MARA  
2 YARDS



**PC6694\_TERRACOTTA**  
MARA  
3 ¾ YARDS  
8 ½ YARDS (BACKING)



**SC5333\_DIRT**  
COTTON COUTURE  
7/8 YARDS (BINDING)



**SC5333\_BRIGHT WHITE**  
COTTON COUTURE  
3 YARDS

# Chatham Square

by Swirly Girls Design

90" x 105"

## Cutting:

WOF = Width of Fabric

### **From PC6694 Terracotta:**

Cut [24] 5-1/2" x WOF strips

### **From PC6694 Mud:**

Cut [12] 5-1/2" x WOF strips

### **From SC5333 Bright White:**

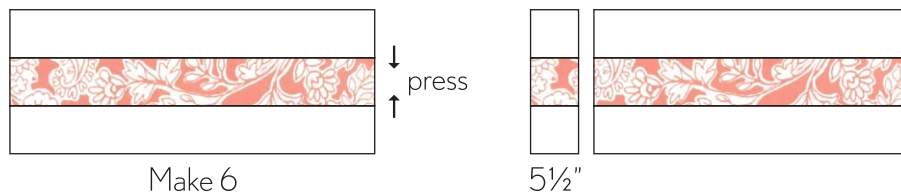
Cut [18] 5-1/2" x WOF strips

### **From SC5333 Dirt:**

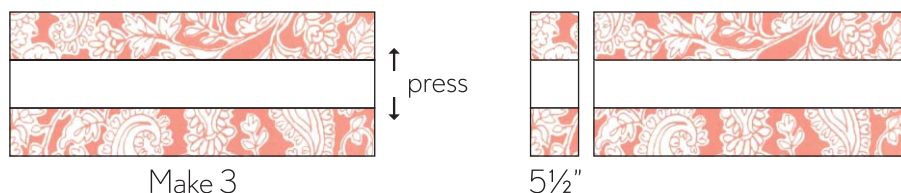
Cut [10] 2-1/2" x WOF strips (binding)

## Piecing:

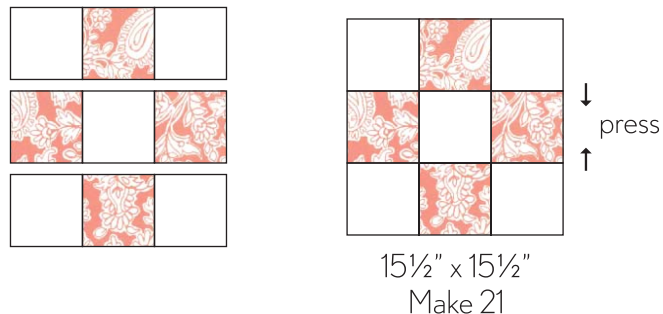
Sew a 5-1/2" Bright White strip lengthwise to each side of a 5-1/2" Terracotta strip as shown. Press toward Terracotta strip. Repeat to make a total of [6] strip sets. Crosscut [7] 5-1/2" x 15-1/2" segments from each strip set to yield a total of [42] segments.



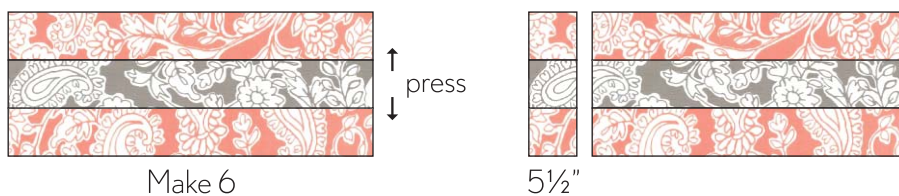
Sew a 5-1/2" Terracotta strip lengthwise to each side of a 5-1/2" Bright White strip as shown. Press toward Terracotta strips. Repeat to make a total of [3] strip sets. Crosscut [7] 5-1/2" x 15-1/2" segments from each strip set to yield a total of [21] segments.



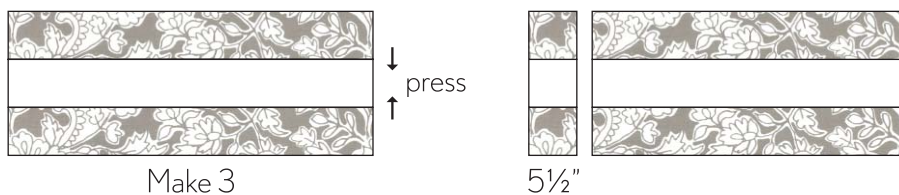
Arrange segments as shown to create a nine-patch block.  
Sew together and press as indicated by arrows.  
Repeat to make a total of [21] blocks.



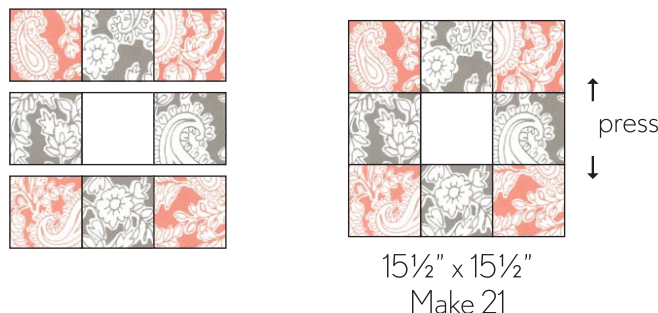
Sew a 5-1/2" Terracotta strip lengthwise to each side of a 5-1/2" Mud strip as shown. Press toward Terracotta strips. Repeat to make a total of [6] strip sets. Crosscut [7] 5-1/2" x 15-1/2" segments from each strip set to yield a total of [42] segments.



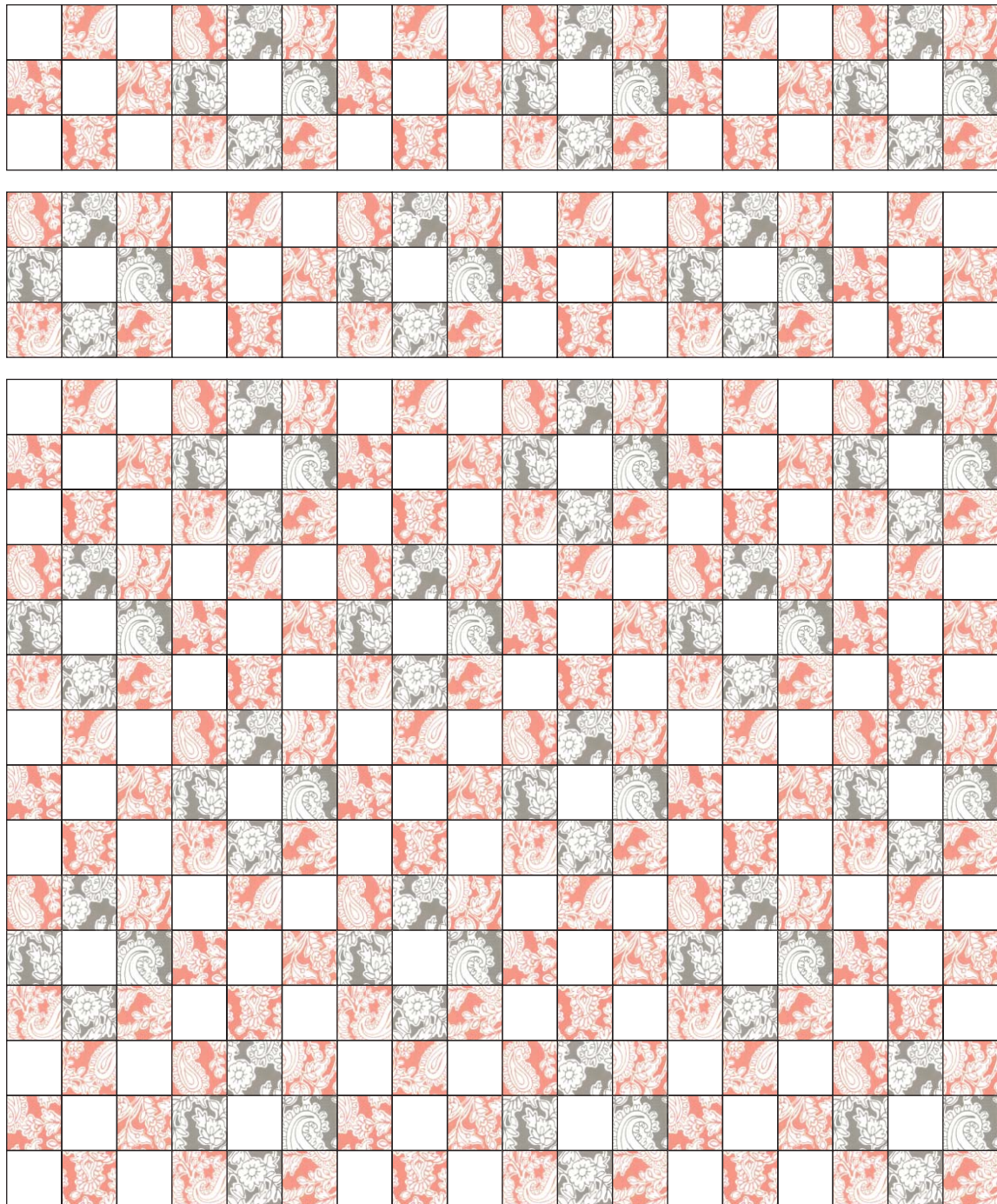
Sew a 5-1/2" Terracotta strip lengthwise to each side of a 5-1/2" Bright White strip as shown. Press toward Bright White strips. Repeat to make a total of [3] strip sets. Crosscut [7] 5-1/2" x 15-1/2" segments from each strip set to yield a total of [21] segments.



Arrange segments as shown to create a nine-patch block. Sew together and press as indicated by arrows.  
Repeat to make a total of [21] blocks.



Alternate blocks as shown below. Sew blocks together into horizontal rows and press toward Mud blocks. Sew rows together to complete quilt center.



[www.swirlygirlsdesign.com](http://www.swirlygirlsdesign.com)

© Swirly Girls Design, Inc. Permission is granted to shop owners and teachers to make copies for promotional or educational purposes. This pattern may not be reproduced for commercial purposes.