

PAINTED DESERT CARPET



LEVEL: CONFIDENT BEGINNER | SIZE: 40" W X 66" H | QUILT DESIGNED BY MARINDA STEWART

FABRIC REQUIREMENTS

45" X 70" BACKING, 45" X 70" BATTING



CX6645 Ranch
Blanket Patchwork
1/2 yard



K1259 (Teal)
Krystal
1/2 yard



CX6652 Aloe
Dots and Diamonds
1/4 yard



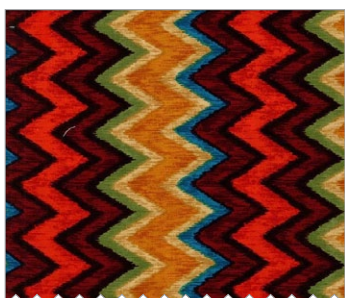
K2149 (Burgundy)
Krystal
1/8 yard



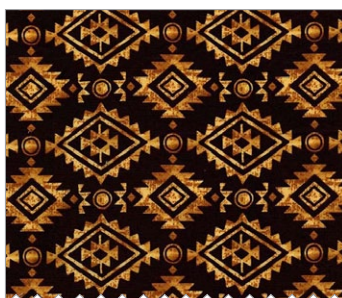
CX6650 Adobe
Pueblo Pottery
1/8 yard



K1124 (Gold)
Krystal
5/8 yard



CX6646 Ranch
Ikat Chevron
1 1/2 yard



CX6651 Earth
Diamond Stripe
1/6 yard



CX6647 Turquoise
Blanket Stripe
3/8 yard



CX6647 Sunset
Blanket Stripe
1/4 yard



CX6649 Teal
Chili Peppers
1/4 yard



K4151 (Avocado)
Krystal
6" x 16" piece

"Painted Desert Carpet"

Quilt by Marinda Stewart

Size: Approximately 40" x 66" Skill Level : Confident Beginner

Materials

Fabric	Yardage	Cutting
CX6645 Ranch Blanket Patchwork	1/2 yard	(1) 14 1/2" x 34 1/2"
K1259 (Teal) Krystal	1/2 yard	(2) 1" x 14 1/2" (2) 1" x 35 1/2" (6) 2 1/2" x W.O.F. - binding
CX6652 Aloe Dots and Diamonds	1/4 yard	(2) 2" x 15 1/2" (2) 2" x 38 1/2"
K2149 (Burgundy) Krystal	1/8 yard	(2) 1" x 18 1/2" (2) 1" x 39 1/2"
CX6650 Adobe Pueblo Pottery	1/8 yard	(2) 1" x 19 1/2" (2) 1" x 40 1/2"
K1124 (Gold) Krystal	5/8 yard	(28) 6 1/2" 45° triangles (4) 6 1/2" squares
CX6646 Ranch Ikat Chevron	1 1/2 yard	(24) 6 1/2" 45° triangles *
CX6651 Earth Diamond Stripe	1/6 yard	(2) 1" x 32 1/2" (2) 1" x 53 1/2" **
CX6647 Turquoise Blanket Stripe	3/8 yard	(2) 3 1/2" x 21 1/2" (2) 3 1/2" x 40 1/2"
CX6647 Sunset Blanket Stripe	1/4 yard	(4) 3 1/2" x 6 1/2" (4) 3 1/2" x 10 1/2"
CX6649 Lagoon Chili Peppers	1/4 yard	(2) 3 1/2" x 40 1/2" center on motif
K4151 (Avocado) Krystal	6" x 16" piece	(4) Leaves (see pattern)

Also Needed: 45" x 70" backing, 45" x 70" batting, scissors, straight pins, rotary cutter, acrylic ruler, mat, threads to match, and fusible web.

OPTIONAL: (but recommended) 45° triangle ruler 6" W x 6 1/2" H or Template plastic for drafting triangle.

Note: Triangle pattern is 6" wide at the base, 6 1/2" high with a 45° angle at the tip.

* The triangles were fussy-cut on the same stripe repeat for uniformity.

** Pieced for length.

Disclaimers

This pattern is provided as a courtesy to quilt stores, catalogs, and quilters. Michael Miller Fabrics, LLC is not responsible for the accuracy of any kits packaged to accompany this pattern. Please direct any inquiries to the kit maker.

Yardage requirements for this pattern may allow for excess yardage to accommodate specific placement of motifs or to allow for any fussy-cutting to achieve the finished quilt design.

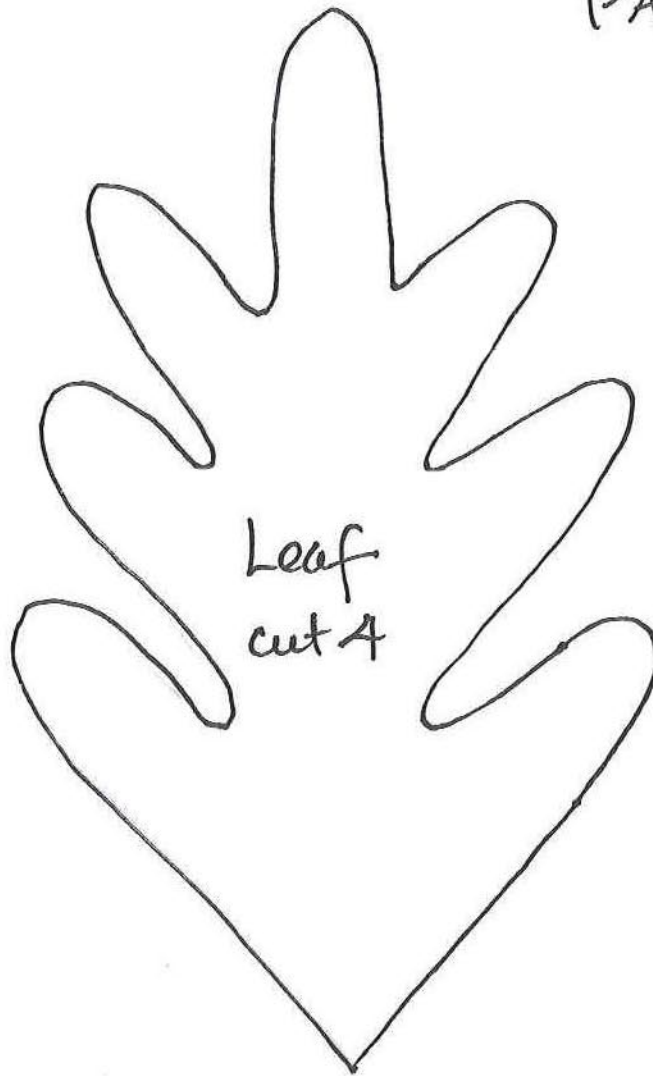
While every attempt has been made to give accurate measurements, yardage requirements, and construction directions; this does not allow personal variations in measuring, cutting, and or sewing. The enclosed directions were used in the construction of the original quilt.

Directions:

1. Sew one K1259 1" x 14 1/2" piece to the top and bottom of CX6645. Sew one K1259 1" x 3 1/2" piece to each side.
2. Sew one CX6652 2" x 15 1/2" piece to the top and bottom of the panel. Sew one CX6652 2" x 38 1/2" piece to each side.
3. Sew one K2149 1" x 18 1/2" piece to the top and bottom of the panel. Sew one K2149 1" x 39 1/2" piece to each side.
4. Sew one CX6550 1" x 19 1/2" piece to the top and bottom of the panel. Sew one CX6550 1" x 40 1/2" piece to each side. Set aside.
5. Trace leaf pattern onto the paper side of the fusible web (4) times. Following manufacturer's directions iron fusible web onto the wrong side of K4151. Cut out leaves. Remove paper backing. Iron leaves diagonally on each K1124 6 1/2" square. Machine satin stitch all raw edges to finish. Set aside.
6. For the triangle border - begin and end with a K1124 triangle and alternate with (4) CX6646 triangles as shown. Trim finished strip to 20 1/2". Make (2). Sew one strip to the top and one to the bottom of the panel. Repeat for the side borders using (8) CX6646 triangles. Make (2). Trim finished strips to 40 1/2". Sew one 6 1/2" leaf square to each end of each strip as shown. Sew completed strips to each side of the quilt.
7. Sew one CX6651 1" x 32 1/2" piece to the top and bottom of the quilt. Sew one CX6651 1" x 53 1/2" (pieced for length) piece to each side.
8. Sew one CX6647 Sunset 3 1/2" x 6 1/2" piece to each end of one CX6647 Turquoise 3 1/2" x 21 1/2". Make (2). Sew one to the top and bottom of the quilt. Sew one CX5547 Sunset 3 1/2" x 10 1/2" piece to each end of one CX6647 Turquoise 3 1/2" x 40 1/2" piece. Make (2). Sew to each side of the quilt.
9. Sew one CX6644 3" x 40 1/2" piece to the top and bottom of the quilt. The tops of the chili peppers should be on the inside edge at the seam.
10. Layer backing, batting, and quilt top. Baste.
11. Quilt as desired.
12. Bind quilt using K1259 2 1/2" strips pieced as needed for length.

Painted Desert Carpet

PATTERN



*Marinda © 2014