

BUBBLY BLOOMS



FABRIC REQUIREMENTS



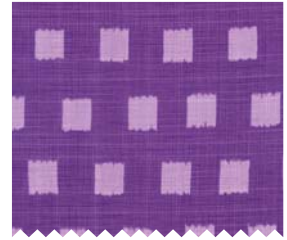
CX6688_PRINCESS
FRINGE FLOWERS
1/3 YARD



CX6700_PRINCESS
BIG HASH STRIPE
1/8 YARD



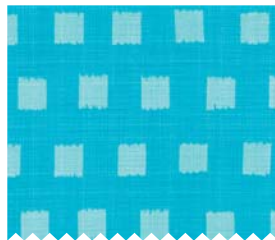
CX6513_PRINCESS
IN THE ROUND
1 YARD



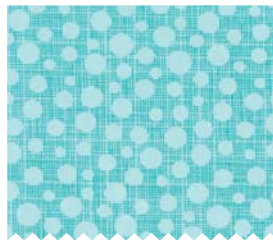
CX6689_PRINCESS
SQUARE DOT
1/4 YARD



CX6689_MAGENTA
SQUARE DOT
1/2 YARD



CX6689_TURQUOISE
SQUARE DOT
1 YARD
(INCLUDES BINDING)



CX6699_LUNA
HASH DOT
3/8 YARD



CX6699_PRINCESS
HASH DOT
3/8 YARD



CX6699_ROSE
HASH DOT
3/8 YARD



CX6688_PRINCESS
FRINGE FLOWERS
3 YARDS (BACKING)



SC5333_BRIGHT WHITE
COTTON COUTURE
1 1/8 YARDS

"Hash Mark - It's a Girl Thing"

Quilt by Heidi Pridemore

Size: Approximately 44" x 53 ½" Skill Level: Advanced Beginner

Materials

Cutting instructions

Please Note: All strips are cut across the width of fabric (WOF) from selvage to selvage edge unless otherwise noted.

	Fabric	Yardage	Cutting
(A)	CX6700-Princess Big Hash Stripe – Princess	¼ yard	<ul style="list-style-type: none"> • Cut one 2" x WOF strip. Sub-cut the strip into ten 2" squares.
(B)	CX6513-Princess In the Round – Princess	1 yard	<ul style="list-style-type: none"> • Cut five 5 ½" x WOF strips. Sew the strips together, end to end with diagonal seams, and cut (2) 5 ½" x 44" strips and (2) 5 ½" x 44 ½" strips. • Cut one 2" x WOF strip. Sub-cut the strip into ten 2" squares. • See instructions to cut two large flower centers.
(C)	CX6688-Princess Fringe Flower – Princess	⅓ yard	<ul style="list-style-type: none"> • See instructions to cut two large flowers.
(D)	CX6689-Magenta Square Dot – Magenta	½ yard	<ul style="list-style-type: none"> • Cut two 2 ½" x WOF strips. Sub-cut the strips into thirty-one 2" x 2 ½" strips. • See instructions to cut two large flowers.
(E)	CX6689-Princess Square Dot – Princess	¼ yard	<ul style="list-style-type: none"> • See instructions to cut five small flowers.
(F)	CX6689-Turquoise Square Dot – Turquoise	1 yard	<ul style="list-style-type: none"> • Cut two 2 ½" x WOF strips. Sub-cut the strips into thirty-one 2" x 2 ½" strips. • See instructions to cut four small flower centers. • See instructions to cut two large flowers. • Cut five 2 ½" x WOF strips for the binding.
(G)	CX6699-Luna Hash Dot – Luna	⅜ yard	<ul style="list-style-type: none"> • Cut two 2 ½" x WOF strips. Sub-cut the strips into thirty-one 2" x 2 ½" strips. • See instructions to cut five small flowers. • See instructions to cut two large flower centers.
(H)	CX6699-Princess Hash Dot Princess	⅜ yard	<ul style="list-style-type: none"> • Cut two 2 ½" x WOF strips. Sub-cut the strips into thirty-one 2" x 2 ½" strips. • See instructions to cut five small flower centers.
(I)	CX6699-Rose Hash Dot – Rose	⅜ yard	<ul style="list-style-type: none"> • See instructions to cut five small flower centers. • See instructions to cut four small flowers. • See instructions to cut two large flower centers.
(J)	SC5333-White Classic Cotton – White	1 ⅛ yards	<ul style="list-style-type: none"> • Cut three 8 ½" x WOF strips. Sub-cut the strips into twelve 8 ½" squares. • Cut two 2 ½" x 40" WOF strips. • Cut two 2 ½" x 34 ½" WOF strips.
Backing	CX6688-Princess Fringe Flower – Princess	3 yards	<ul style="list-style-type: none"> • Cut two 52" x WOF strips. Piece the strips together and trim to make the 52" x 62" pieced backing.

You will also need:

- 52" x 62" batting, threads to match, scissors, straight pins, acrylic ruler, rotary cutter and mat.

Disclaimers

This pattern is provided as a courtesy to quilt stores, catalogs and quilters. Michael Miller Fabrics, LLC is not responsible for the accuracy of any kits packaged to accompany this pattern. Please direct any inquiries to the kit maker.

Yardage requirements for this pattern may allow for excess yardage to accommodate specific placement of motifs or to allow for any fussy-cutting to achieve the finished quilt design.

While every attempt has been made to give accurate measurements, yardage requirements and construction directions; this does not allow personal variations in measuring, cutting or sewing. The enclosed directions were used in the construction of the original quilt.

Block Assembly

1. Sew one 2" x 2 ½" Fabric G strip, one 2" x 2 ½" Fabric H strip, one 2" x 2 ½" Fabric D strip and one 2" x 2 ½" Fabric F strip together end to end, in that order, to make one sashing strip (Fig. 1). Repeat to make thirty-one sashing strips total.



Fig. 1

make 31

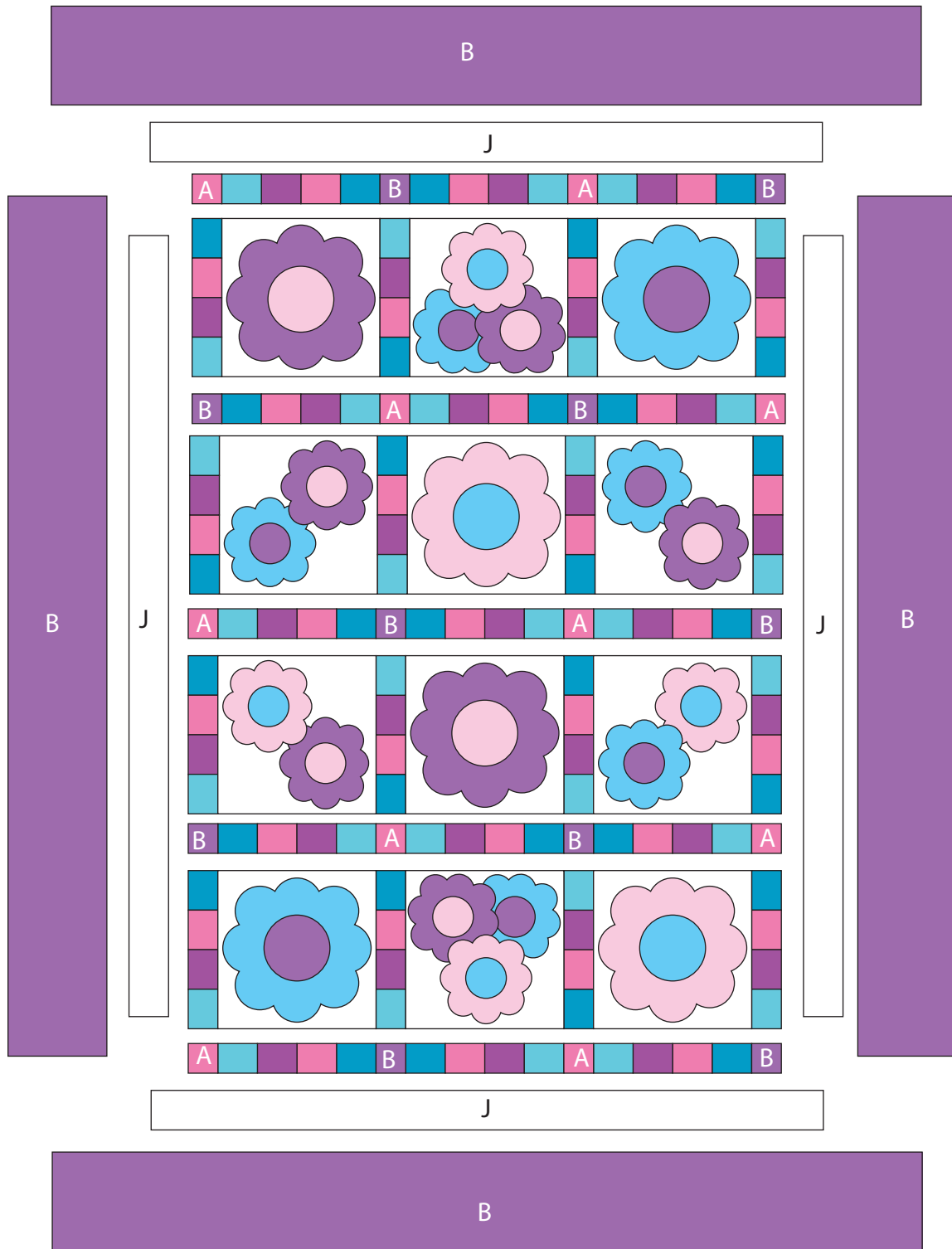
2. Sew one 2" Fabric A square, one sashing strip, one 2" Fabric B square, one sashing strip, one 2" Fabric A square, one sashing strip and one 2" Fabric B square together, in that order, to make one A-sashing row. Pay attention to the orientation of the sashing strips. Repeat to make three A-sashing rows total.
3. Repeat Step 2 but reverse the order of the A squares and B squares to make one B-sashing row. Pay attention to the orientation of the sashing strips. Repeat to make two B-sashing strips total.
4. Following the manufacturer's instructions, trace the listed number of each template onto the paper side of the fusible web. Roughly cut out each template about ⅛" outside the drawn lines.
5. Press each template onto the wrong side of the fabrics as listed on the templates. Cut out each template on the drawn lines.
6. Refer to the quilt photo to arrange and press the six large flowers, six large flower centers, fourteen small flowers and fourteen small flower centers together onto the twelve 8 ½" Fabric J squares.
7. Finish the raw edges of each shape with a decorative stitch such as a buttonhole or satin stitch to complete the twelve flower blocks.

Quilt Top Assembly

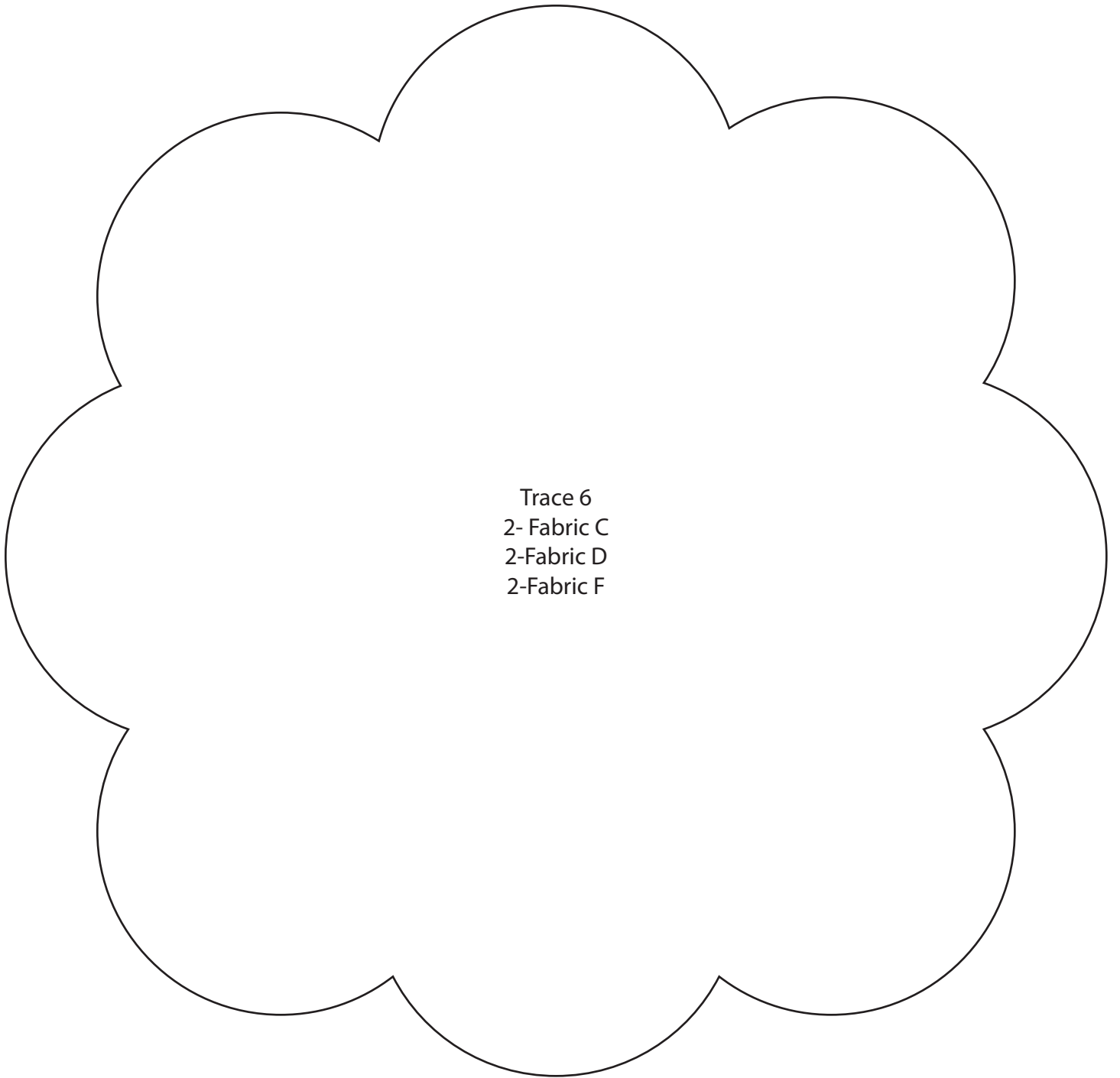
(Follow the Quilt Layout while assembling the quilt top.)

8. Sew four sashing strips and three flower blocks together, alternating them, to make one row. Repeat to make four rows.
9. Sew the five A and B sashing strips and four rows together, alternating them, to make the quilt top.
10. Sew one 2 ½" x 40" Fabric J strip to each side of the quilt top. Sew one 2 ½" x 34 ½" Fabric J strip to the top and to the bottom of the quilt top.

11. Sew one 5 1/2" x 44" Fabric B strip to each side of the quilt top. Sew one 5 1/2" x 44 1/2" Fabric B strip to the top and to the bottom of the quilt top.
12. Layer and quilt as desired.
13. Sew the five 2 1/2" x WOF Fabric F strips together, end-to-end with 45-degree seams, to make the binding. Fold this long strip in half lengthwise with wrong sides together and press
14. Bind as desired.

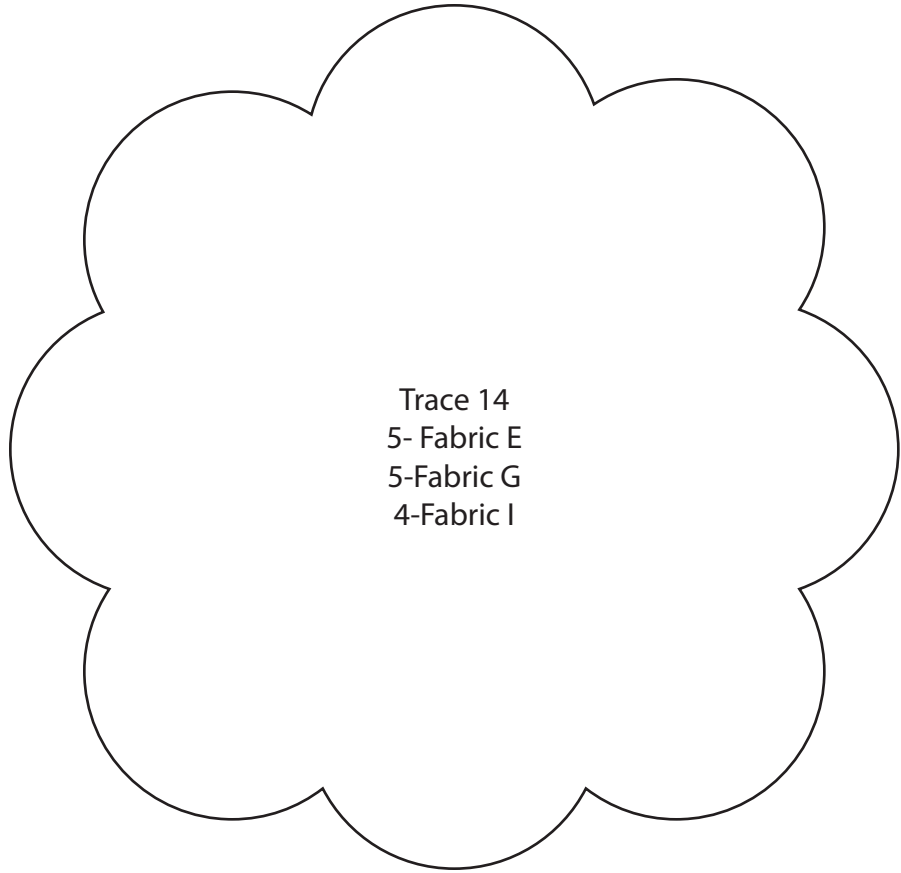


Quilt Layout

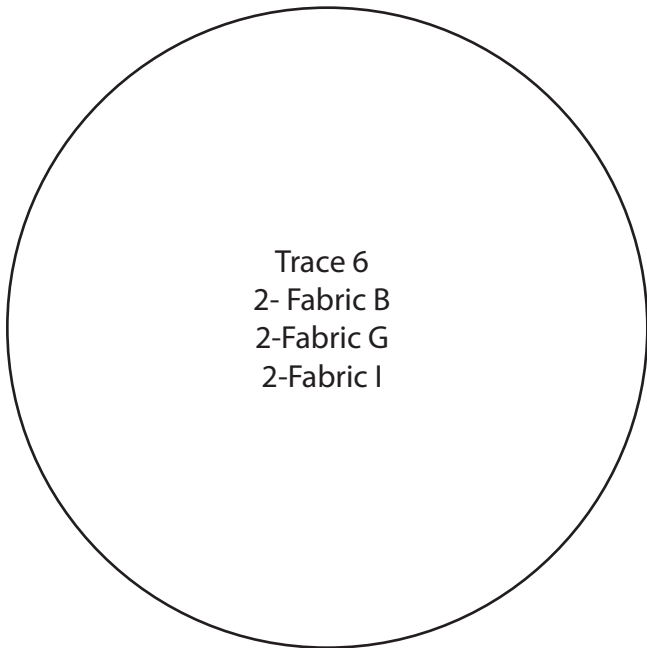


Trace 6
2- Fabric C
2-Fabric D
2-Fabric F

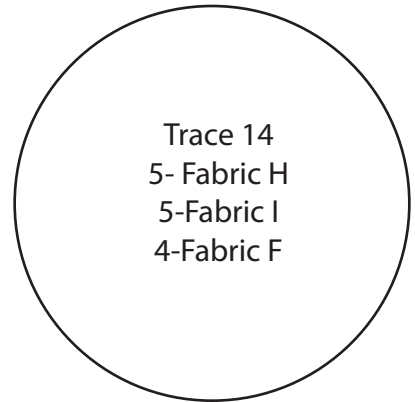
Quilt Templates



Trace 14
5- Fabric E
5-Fabric G
4-Fabric I



Trace 6
2- Fabric B
2-Fabric G
2-Fabric I



Trace 14
5- Fabric H
5-Fabric I
4-Fabric F

Quilt Templates