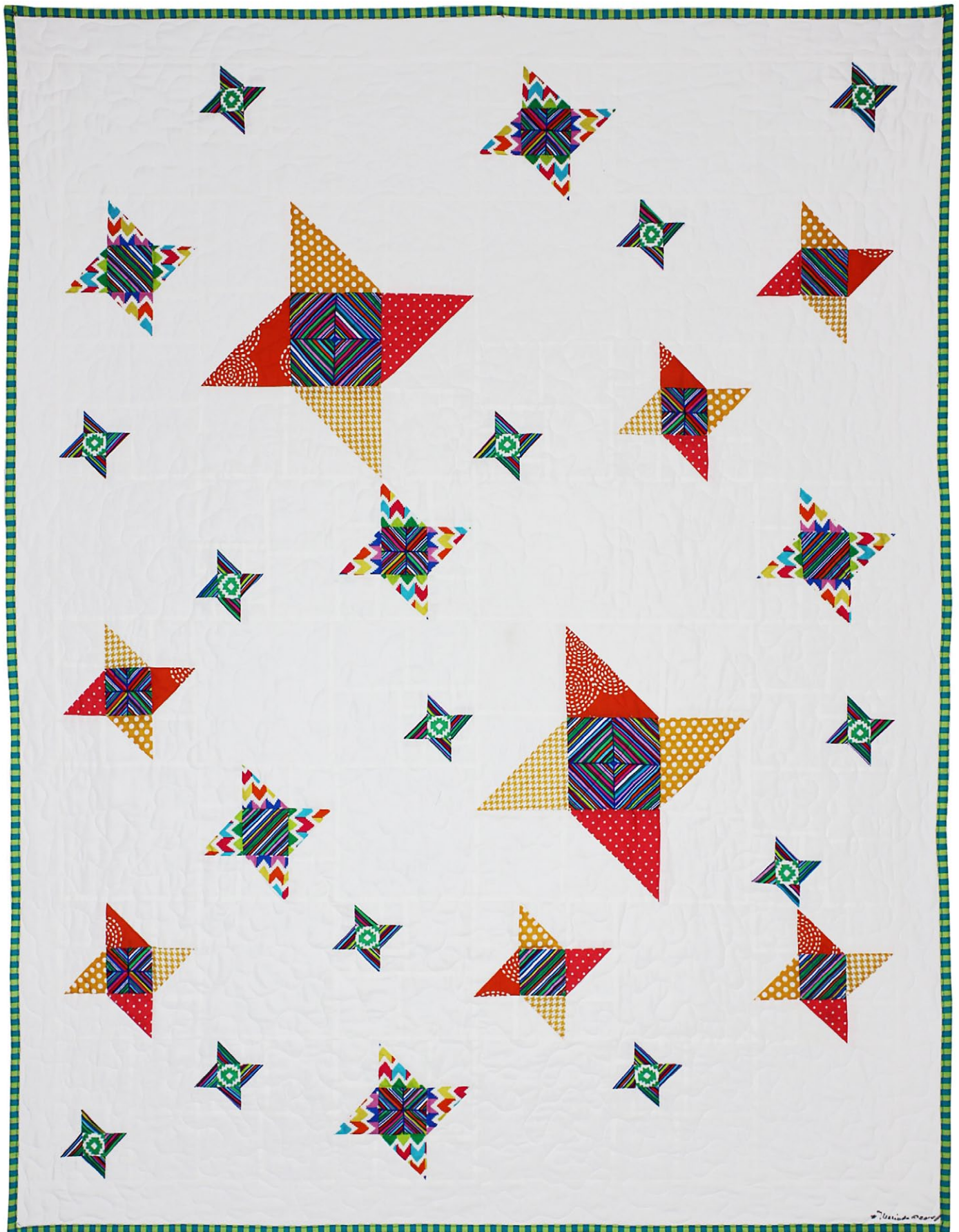


TWINKLE LITTLE STAR



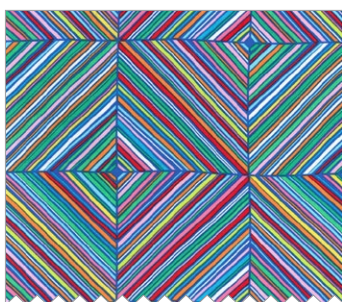
LEVEL: CONFIDENT BEGINNER | SIZE: 40" W X 52" H | QUILT DESIGNED BY MARINDA STEWART

FABRIC REQUIREMENTS

45" x 58" backing and batting



SC5333 Bright White
Cotton Couture
2 yards



CX6714 Blue
Estrella
3/8 yard



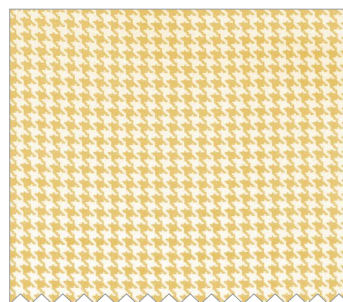
CX5946 Orange
Stitch Circle
Fat 1/8



CX5518 Mango
Kiss Dot
Fat 1/8



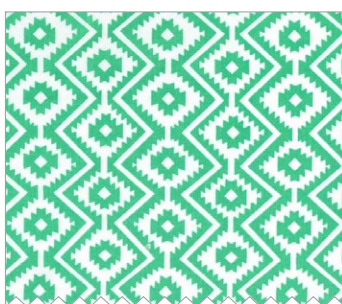
CX5514 Shell
Pinhead
Fat 1/8



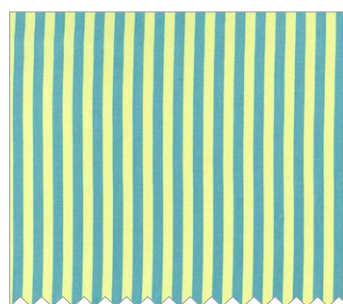
CX4835 Mango
Tiny Houndstooth
Fat 1/8



CX6718 Blue
Emilia
1/8 yard



CX6713 Turf
Eduardo
Fat 1/8



CX3584 Lagoon
Clown Stripe
3/8 yard

"Twinkle Little Star "
 Quilt by Marinda Stewart
 Size: 40" W x 52" H Skill Level : Confident Beginner

Materials

Fabric	Yardage	Cutting
SC5333 Bright White Cotton Couture	2 yards	(15) 6 ½" squares (39) 3 ½" squares (48) 2 ½" squares (26) 2" squares (52) 1 ½" squares (12) 3" squares (2) 2 ½" x 48 ½" (2) 2 ½" x 40 ½" (8) 4 ½" squares (4) 5" squares
CX6714 Blue Estrella	3/8 yard	(2) 4 ½" squares * (12) 2 ½" squares * (26) 2" squares
CX5946 Orange Stitch Circle	Fat 1/8	(3) 3" squares
CX5518 Mango Kiss Dot	Fat 1/8	(3) 3" squares
CX5514 Shell Pinhead	Fat 1/8	(3) 3" squares
CX4835 Mango Tiny Houndstooth	Fat 1/8	(3) 3" squares
CX6718 Blue Emilia	1/8 yard	(12) 3" squares
CX6713 Turf Eduardo	Fat 1/8	(13) 1 ½" squares *
CX3584 Lagoon Clown Stripe	3/8 yard	(2) 2 ½" x 40 ½" (2) 2 ½" x 52 ½" **
Also Needed: 45" x 58" backing, 45" x 58" batting, threads to match, scissors, straight pins, rotary cutter, acrylic ruler, and mat.		
* Optional: Center on an intersection of motifs or on a specific area of the print.		
** Pieced for length		

Disclaimers

This pattern is provided as a courtesy to quilt stores, catalogs, and quilters. Michael Miller Fabrics, LLC is not responsible for the accuracy of any kits packaged to accompany this pattern. Please direct any inquiries to the kit maker.

Yardage requirements for this pattern may allow for excess yardage to accommodate specific placement of motifs or to allow for any fussy-cutting to achieve the finished quilt design.

While every attempt has been made to give accurate measurements, yardage requirements, and construction directions; this does not allow personal variations in measuring, cutting, and or sewing. The enclosed directions were used in the construction of the original quilt.

The construction for the star block is the same whether it's a 3 1/2", 6 1/2", or 12 1/2" unfinished block, only the fabric changes.

Directions:

1. To make a right square triangle unit, place one White square right sides together with a matching print square. Draw a diagonal line between opposite corners. Stitch 1/4" one each side of the drawn line. Cut apart on the line. Press open. Yield is (2) matching right square triangles. Trim each

Square to the designated measurement:

3 1/2" Block – Block 'A' – use CX6714 and White 2" squares. Make (52) squares. Trim to measure 1 1/2" square.

6 1/2" Block – Block 'B1' – use CX6718 and White 3" squares. Make (24) squares. Trim to measure 2 1/2" square. For Block 'B2' – Use CX5946, CX5518, CX5514, CX4835, and White. Make (6) of each combination. Trim to 1 1/2" each.

12 1/2" Block – Block 'C' – use CX5946, CX5518, CX5514, CX4835, and White. Make (2) of each combination. Trim to 4 1/2" each.

2. For Block 'A' – Row (1) - one 1 1/2" White, (1) right square triangle, one White 1 1/2". Row (2) one right square triangle, (1) CX6713 1 1/2" square, (1) triangle unit (rotate triangles as shown to make a pinwheel). Row (3) – repeat Row #1. Make (13) 3 1/2" star blocks. To complete Block 'A' – sew together into a 4-patch unit with (3) 3 1/2" White squares. Make (13) 4-patch blocks. Set aside.
3. For Block 'B1' – sew together (1) 2 1/2" White square on either side of one right square triangle for row #1 + #3. Sew together (2) triangle units on each side of a CX6714 2 1/2" square for row #2. Make (6) 'B1' using CX6718 triangles. Set aside.
4. For Block 'B2' – repeat step #3 using (1) each triangle unit with CX5946, CX5518, CX5514, and CX4835. Make (6) blocks total. 6 1/2" squares. Set aside.
5. For Block 'C' – row #1 and row #3. Sew one 4 1/2" White square on each side of one 4 1/2" triangle unit. Sew one 4 1/2" triangle unit on each side of one CX6714 4 1/2" square for Row #2. Join rows as shown to make (1) 12 1/2" square. Make (2) squares total.
6. Assemble the quilt one row at a time. Join rows to the previous row as each row is completed. Row #1 – 6 1/2" White, Block 'A', 6 1/2" White, Block 'B1', 6 1/2" White, Block 'A'. Refer to photo for orientation of 'A' blocks
Row #2 - #3 – Sew one 'B1' to the top of one 'A'. Sew one 'C' block to the right side of the A/B1 unit. For the remainder of Row #2 – (1) 6 1/2" White, 'A', 'B2'. For the remainder of Row #3 – (1) 'A', (1) 'B2', (1) 6

1/2" White. Join Row #3 to the bottom of Row #2. Sew completed unit to the right side of the 12 1/2" block.

Sew completed row 2-3 unit to the bottom of Row #1.

Row #4 - (1) 6 1/2" White, (1) 'A', (1) 'B1', (1) 6 1/2" White, (1) 6 1/2" White, (1) 'B1'.

Row #5 - #6 - Row #5 use 'B2', 6 1/2" White, 'A'. Row #6 - use 6 1/2" White, 'B1', 6 1/2" White. Join partial rows. Add 12 1/2" block to the right side. Finish with (1) 'A' sewn to the top of another 'A'. Join to the right side of the 12 1/2" block. Add to quilt.

Row #7 - 'B2', 6 1/2" White, 'A', 'B2', 6 1/2" White, 'B2'.

Row #8 - 'A', 'A', 'B1', 6 1/2" White, 'A', 6 1/2" White.

7. Sew one White 2 1/2" x 48 1/2" strip (pieced for length) to each side of the quilt. Sew one White 2 1/2" x 40 1/2" piece to the top and bottom of the quilt.
8. Layer backing, batting, and quilt top. Baste.
9. Quilt as desired.
10. Bind quilt using CX3584 2 1/2" strips pieced as needed for length.