

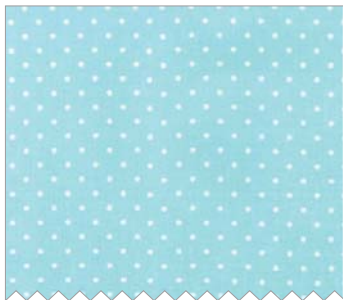
SPRING DIAMONDS



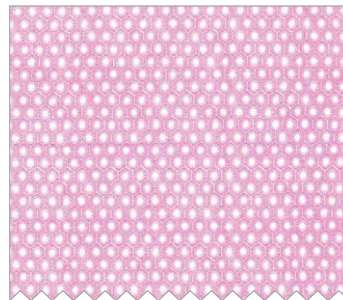
FABRIC REQUIREMENTS



PC6582 Spring
Josephine
2 yards



CX5514 Aqua
Pinhead
1/2 yard



DC6512 Pink
Sun Tiles
1/2 yard



SC5333 Turq
Cotton Couture
Fat Quarter



SC5333 Clementine
Cotton Couture
Fat Quarter



SC5333 Lemon
Cotton Couture
Fat Quarter



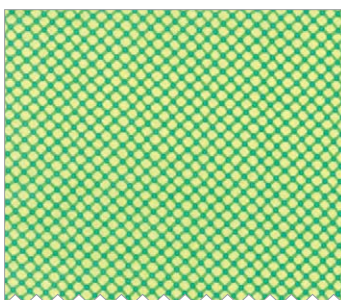
SC5333 Magenta
Cotton Couture
Fat Quarter



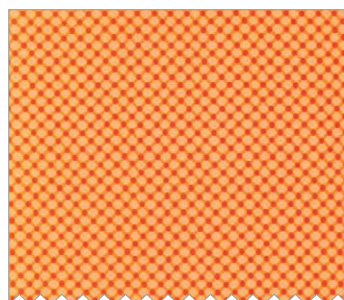
SC5333 Tangerine
Cotton Couture
Fat Quarter



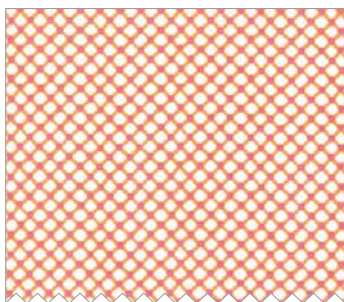
SC5333 Limeade
Cotton Couture
Fat Quarter



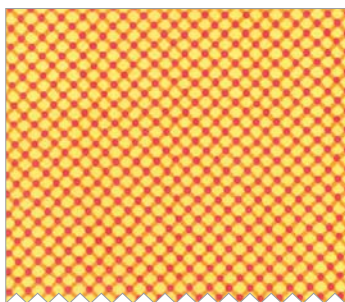
CX5911 Green
Cora
Fat Quarter



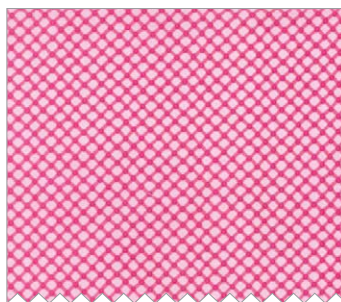
CX5911 Orange
Cora
Fat Quarter



CX5911 Sorbet
Cora
Fat Quarter



CX5911 Sunshine
Cora
Fat Quarter



CX5911 Pink
Cora
Fat Quarter



PC6500 Multi
Flower Fields
1/2 yard - binding

"Josephine"

Pattern by Emily Herrick

Size: Approximately 50" W x 60 H" Skill Level : Intermediate

Materials

Fabric	Yardage	Cutting
PC6585- SPRI	2 Yards	Cut 41 from piece "Z". Use arrows to line up grain of fabric.
CX5514 AQUA	1/2 Yard	From all but 2 fabrics cut (3) of each template A, B, C, and D. Use arrows to line up grain of fabric. Cut (7) 2 3/4" x 3 1/2" and (7) 1 3/4" x 5" and (1) 6" x 2 1/4" From 2 fabrics cut (4) of each template A, B, C and D. Use arrows to line up grain of fabric. Cut (9) 2 3/4" x 3 1/2" and (9) 1 3/4" x 5" (1) 6" x 2 1/4"
DC6512 PINK		
SC5333 Turquoise		
SC5333 Clementine		
SC5333 Lemon		
SC5333 Magenta		
SC5333 Tangerine		
SC5333 Limeade		
CX5911 Green		
CX5911 Orange		
CX5911 Sorbet		
CX5911 Sunshine		
CX5911 Pink		
PC6500 Multi	1/2 yards	(7) 2 1/2" x WOF strips for BINDING

Also Needed:

56" x 66" backing, 56" x 66" batting, threads to match, scissors, straight pins, rotary cutter, acrylic ruler.

Disclaimers

This pattern is provided as a courtesy to quilt stores, catalogs, and quilters. Michael Miller Fabrics, LLC is not responsible for the accuracy of any kits packaged to accompany this pattern. Please direct any inquiries to the kit maker.

Yardage requirements for this pattern may allow for excess yardage to accommodate specific placement of motifs or to allow for any fussy-cutting to achieve the finished quilt design.

While every attempt has been made to give accurate measurements, yardage requirements, and construction directions; this does not allow personal variations in measuring, cutting, and or sewing. The enclosed directions were used in the construction of the original quilt.

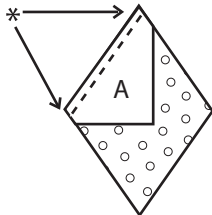
Directions

Use 1/4" seam allowance and press all seams open unless otherwise directed

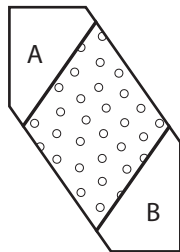
1. For each diamond block you will need an A, B, C, and D piece from the same fabric and a Z piece from the main print.

2. Begin piecing the block together by sewing piece A to the diamond center.

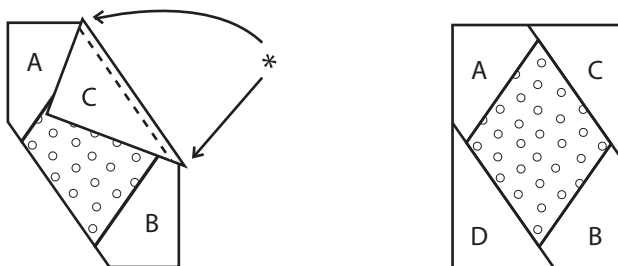
**Remember to offset seams by 1/4" when piecing so that, when opened, fabric edges remain aligned.*



3. Now sew piece B to the opposite side of the diamond. Press these pieces open being careful not to stretch the block.



4. Next, add section C. Finally, piece section D the same way. Carefully press the block open.



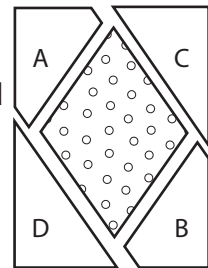
5. As you piece each block, the outer pieces should all be the same print and the center diamond should be a contrasting print.

6. Continue this method of making the blocks until you have 41 blocks.

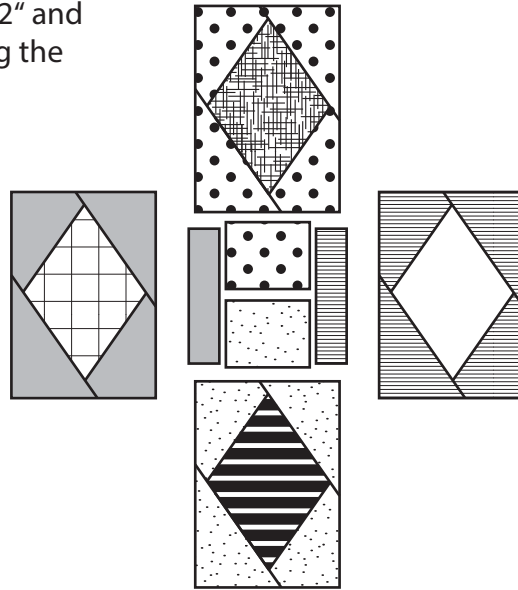
7. Trim blocks to 6" x 9".

8. Trim each block to 6" x 9" keeping the diamond in center.

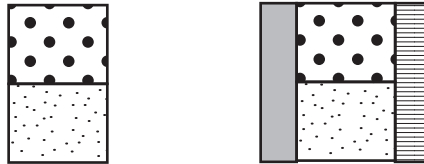
9. Lay blocks out on a large flat surface referring to the diagram as needed. Be sure to leave space between each block for the remaining block pieces.



10. Once you have decided on the placement of your blocks, begin filling in the spaces between blocks with the remaining $2\frac{3}{4}'' \times 3\frac{1}{2}''$ and $1\frac{3}{4}'' \times 5''$ pieces and along the sides of the quilt.

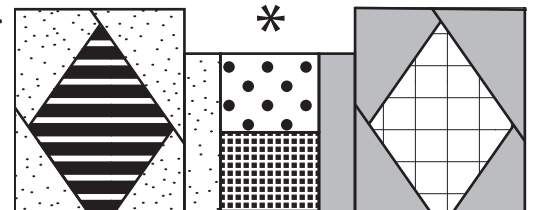


11. Begin piecing the remaining block sections by sewing the $2\frac{3}{4}'' \times 2\frac{1}{2}''$ pieces together first. Then add the $1\frac{3}{4}'' \times 5''$ pieces along each side.

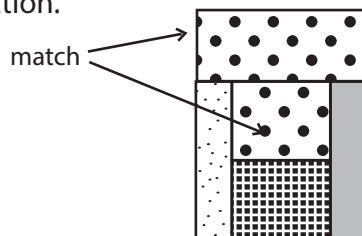


12. Set the pieced section in its place on the quilt layout and move to the next section until all sections have been pieced.

13. Locate the empty spaces along the top and bottom edges of the quilt.



14. Find the print that matches the $2\frac{3}{4}'' \times 2\frac{1}{2}''$ piece next to the open space. Place the corresponding $6'' \times 2\frac{1}{4}''$ piece and attach to the top of the pieced section.



15. Repeat this method of filling in the spaces across the top four spaces, then continue with the bottom four spaces.

16. Sew blocks and pieced sections together in vertical rows.

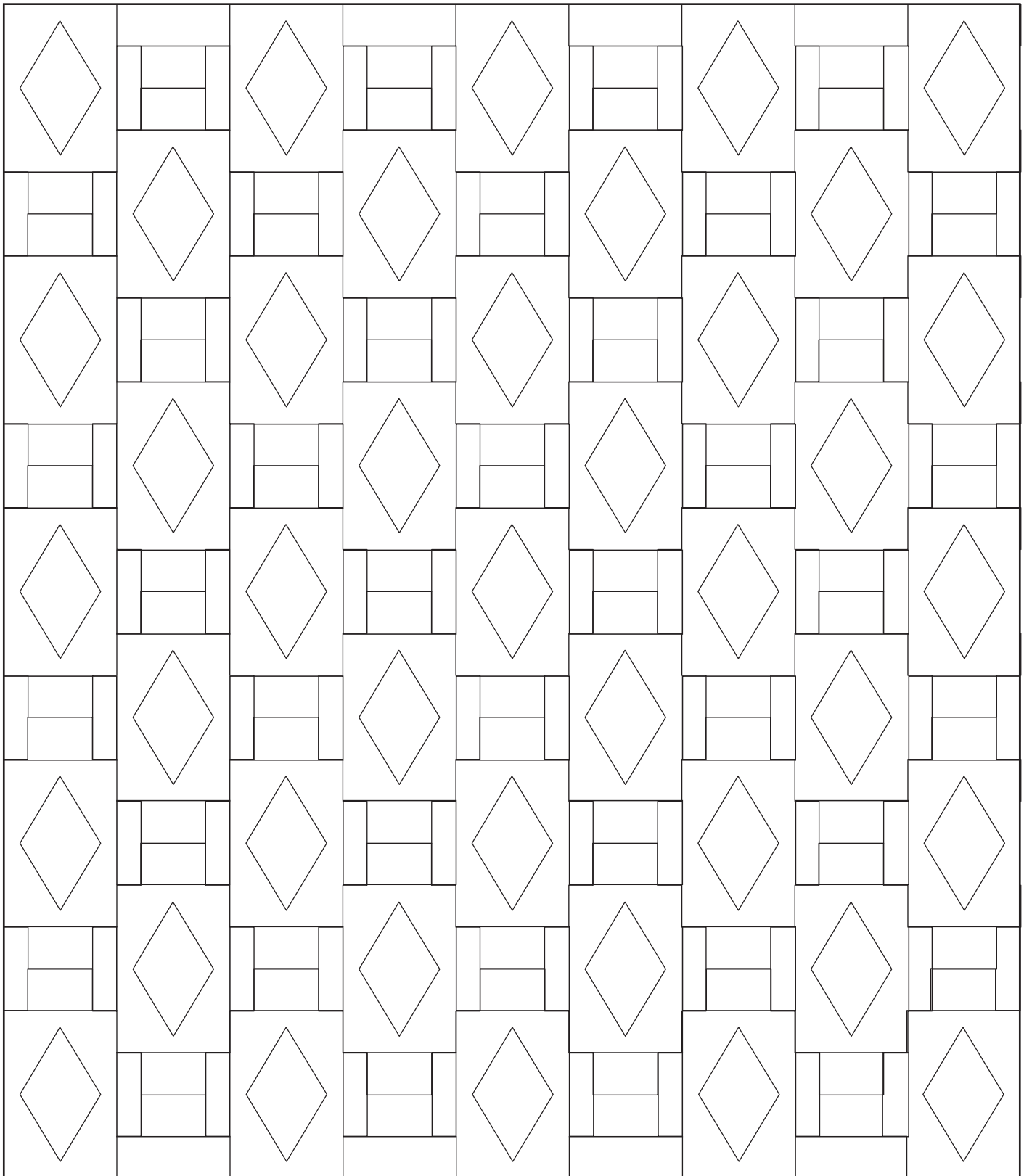
17. Sew rows together to complete quilt top.

18. Layer backing, batting and quilt top. Baste.

19. Quilt as desired.

20. Join together binding strips end-to-end. Bind.

Josephine Quilt Diagram



**JOSEPHINE
TEMPLATE
PIECES**

A

C

Z

D

B

