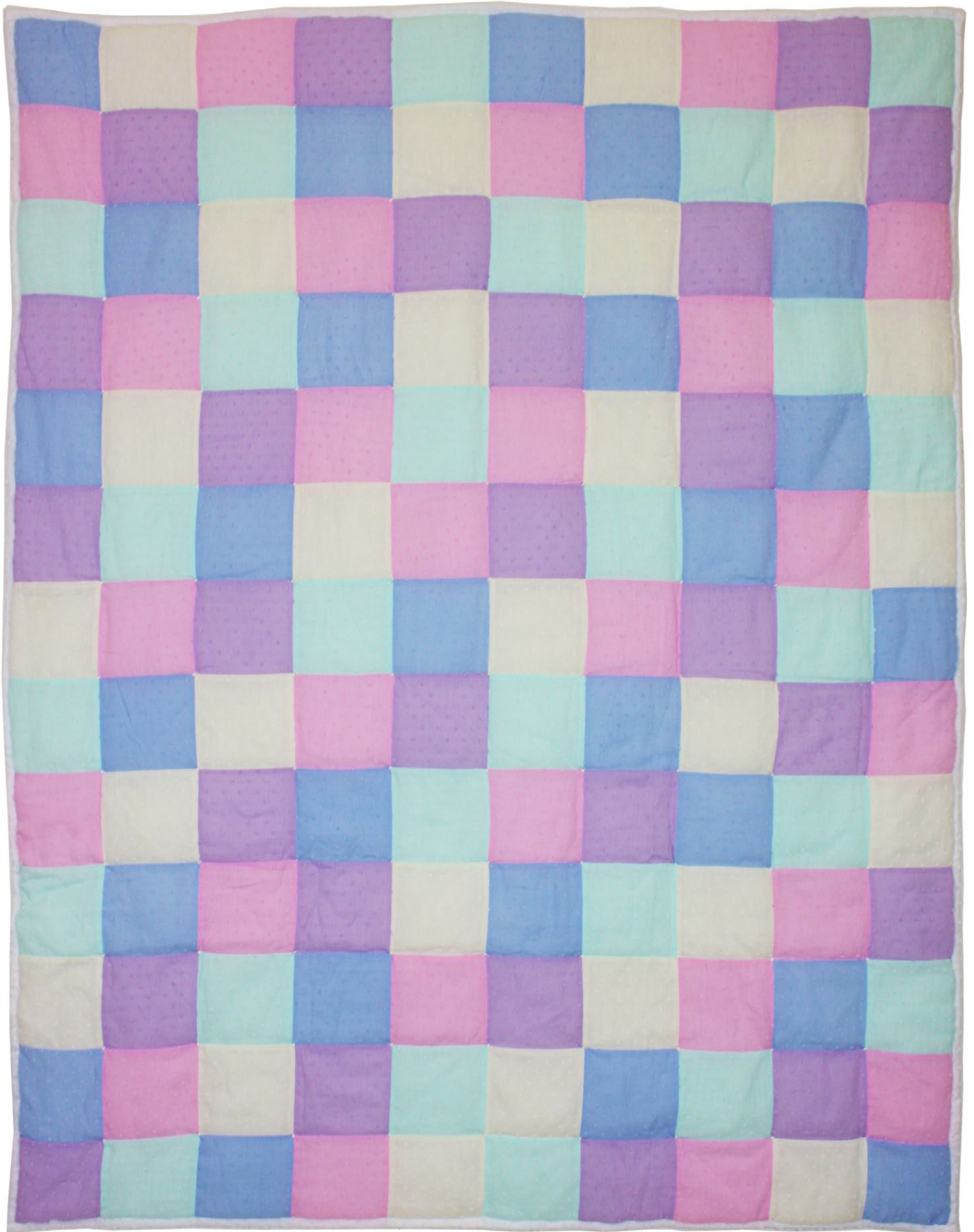


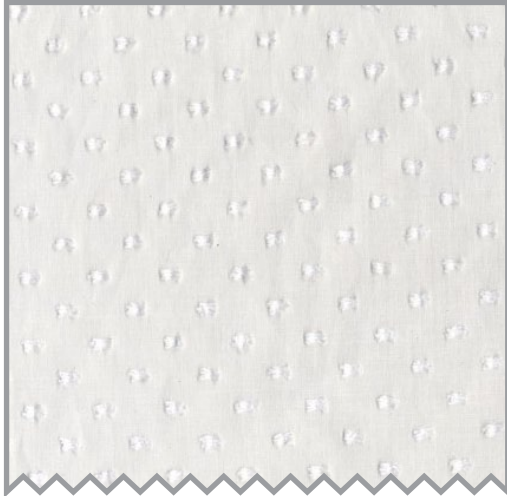
CLIP DOT CRIB



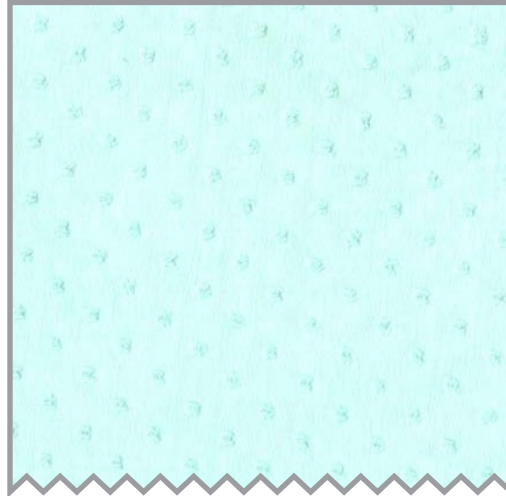
LEVEL: BEGINNER | SIZE:40" W X 52" H | QUILT DESIGNED BY MARINDA STEWART

FABRIC REQUIREMENTS

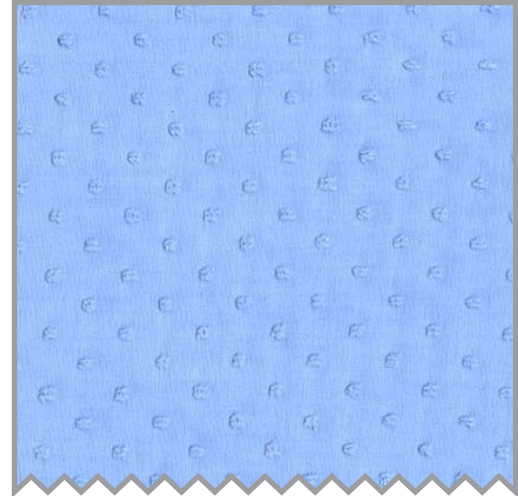
45" X 60" HIGH LOFT POLYESTER BATTING



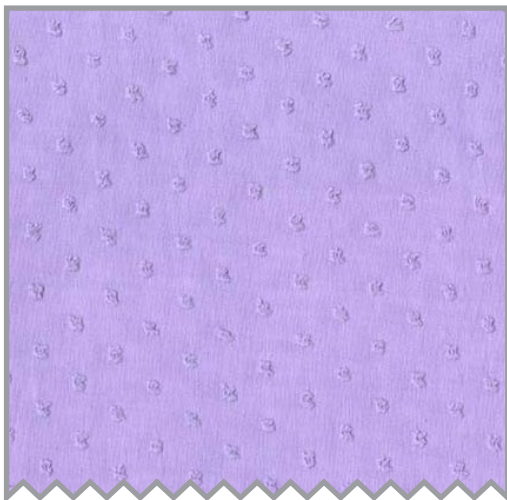
Clip Dot
White
1 5/8 yards



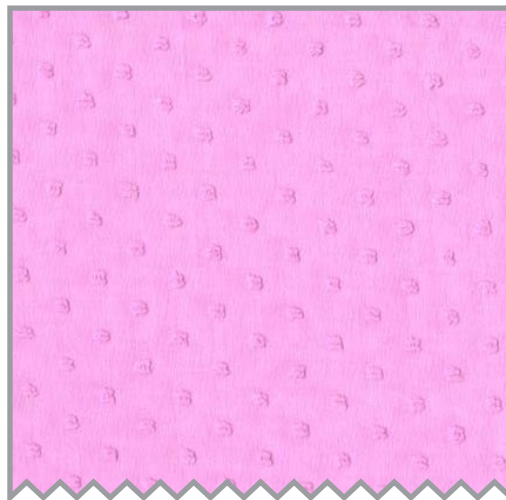
Clip Dot
Spa
1/2 yard



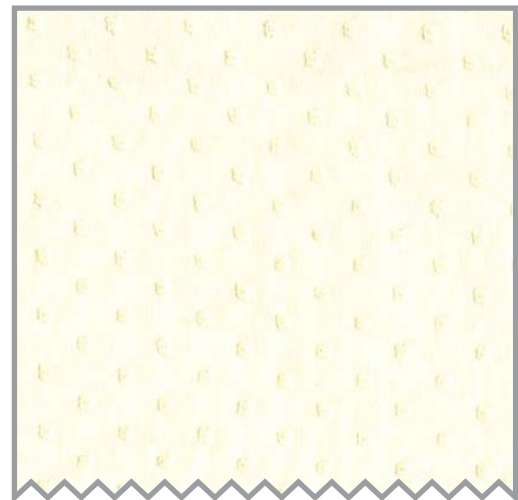
Clip Dot
Boy
1/2 Yard



Clip Dot
Opal
1/2 yard



Clip Dot
Rose
1/2 yard



Clip Dot
Cream
1/2 yard

"Clip Dot Crib"

Quilt designed by Marinda Stewart
Size: 40" x 52" Skill Level: Beginner

Materials

Fabric	Yardage	Cutting
Clip Dot White	1 5/8 yards	Backing
Clip Dot Spa	1/2 yard each	(26) 4 1/2" squares each
Clip Dot Boy		
Clip Dot Opal		
Clip Dot Rose		
Clip Dot Cream		
Also Needed: 45" x 60" high loft polyester batting, threads to match, scissors, straight pins, rotary cutter, acrylic ruler, mat, crewel embroidery needle, and #5 perle cotton - white.		

Disclaimers

This pattern is provided as a courtesy to quilt stores, catalogs, and quilters. Michael Miller Fabrics, LLC is not responsible for the accuracy of any kits packaged to accompany this pattern. Please direct any inquiries to the kit maker.

Yardage requirements for this pattern may allow for excess yardage to accommodate specific placement of motifs or to allow for any fussy-cutting to achieve the finished quilt design.

While every attempt has been made to give accurate measurements, yardage requirements, and construction directions; this does not allow personal variations in measuring, cutting, and or sewing. The enclosed directions were used in the construction of the original quilt.

Directions

1. Randomly sew (2) of each color 4 1/2" squares into a row of (10) blocks. Make (13) rows total.
2. Sew rows together to make quilt top.
3. Layer with White clip dot, batting, and pieced quilt top. Baste.
4. Using the crewel needle threaded with #5 perle cotton, tie each intersection of blocks with the ties clipped on the White Clip Dot side as a detail.
5. Trim excess batting even with the pieced quilt top. Trim the excess White Clip Dot backing to an even 1 1/4". Fold under raw edge towards the quilt by 1/2. Fold again over the raw edge of the quilt. Pin in place. Topstitch edges to finish. Clean finish all raw edges at the corner.