

I HEART PARIS

By Swirly Girls Design



SIZE: 46" W X 58" H | QUILT DESIGNED BY SWIRLY GIRLS DESIGN | SKILL LEVEL: INTERMEDIATE

FABRIC REQUIREMENTS

BACKGROUNDS: 3/8 YARD EACH OF 6 PRINTS

HEARTS: 10 FAT QUARTERS

PRIMROSE HEARTS, BORDER, & BINDING: 1 ½ YARDS

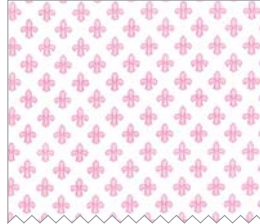
BACKING: 3 YARDS



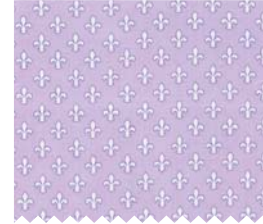
CX6557_PURPLE
PETITE DANDY DAMASK
FAT QUARTER



CX6557_PINK
PETITE DANDY DAMASK
FAT QUARTER



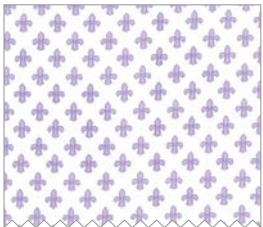
CX6556_ROSE
PETITE FLEUR DE LIS
3/8 YARD



CX6556_PURPLE
PETITE FLEUR DE LIS
FAT QUARTER



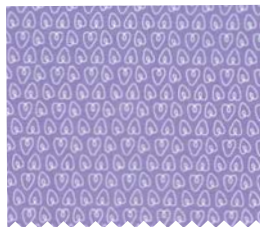
CX6556_PINK
PETITE FLEUR DE LIS
FAT QUARTER



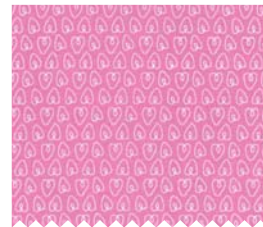
CX6556_LILAC
PETITE FLEUR DE LIS
3/8 YARD



CX6555_ROSE
PETITE HEARTS
3/8 YARD



CX6555_PURPLE
PETITE HEARTS
FAT QUARTER



CX6555_PINK
PETITE HEARTS
FAT QUARTER



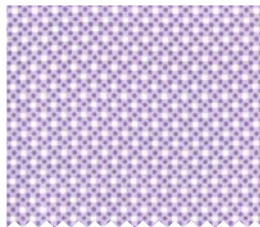
CX6555_LILAC
PETITE HEARTS
3/8 YARD



CX6554_PURPLE
PETITE PARIS
3/8 YARD



CX6554_PINK
PETITE PARIS
3/8 YARD



CX6322_OPAL
DIM DOTS
FAT QUARTER



CX1248_ROSE
EIFFEL TOWER
FAT QUARTER



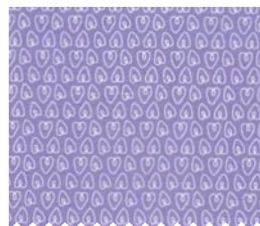
CX1248_PURPLE
EIFFEL TOWER
FAT QUARTER



SC5333_OPAL
COTTON COUTURE
FAT QUARTER



SC5333_PRIMROSE
COTTON COUTURE
1 ½ YARDS
(HEARTS BORDER, BACKING)



CX6555_PURPLE
PETITE HEARTS
3 YARDS (BACKING)

© Swirly Girls Design, Inc. Permission is granted to shop owners and teachers to make copies for promotional or educational purposes. This pattern may not be reproduced for commercial purposes.

I Heart Paris

46" x 58"

Cutting:

WOF = Width of Fabric

From each 3/8 yard print:

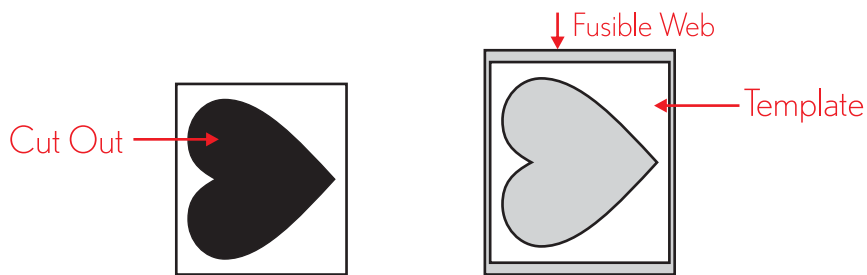
Cut [1] 12-1/2" x WOF strip; subcut [2] 12-1/2" squares

From border fabric:

Cut [5] 5-1/2" x WOF strips (borders) and [6] 2-1/2" x WOF strips (binding)

Prepare Appliqués:

Trace heart applique onto template plastic. Carefully cut the heart shape out of the template plastic, keeping the outside edges intact. Place the heart frame template on the paper side of the fusible web. Trace the inside of the heart frame. Trace 12 hearts onto fusible web.



Note: You may prefer to trace the "cut out" heart shape. I find it more accurate to trace the inside of the frame.

DO NOT cut the traced hearts on the drawn line. Cut them apart at least 1/8" outside the lines. Lay a fusible web heart, paper side up, on the wrong side of a fat quarter print and press according to fusible web manufacturer's directions. Let fabric cool, then cut out heart shape on the drawn line. Peel off paper and place appliqué onto a 12-1/2" background square. Fuse to the background square, following manufacturer's directions. Repeat to fuse a total of 10 hearts from fat quarters and [2] hearts from remaining border fabric.

Stitch the appliqué hearts to each 12-1/2" square using the stitch of your choice. I used a blanket stitch. You may also use a zig zag or straight stitch.

Arrange blocks as shown on Page 1. Sew together into horizontal rows. Sew rows together to complete quilt center.

Sew [5] 5-1/2" x WOF border strips together end to end. Cut two 5-1/2" x 48-1/2" borders and sew to each side of quilt center. Press toward borders.

Cut two 5-1/2" x 46-1/2" borders and sew to top and bottom of quilt center. Press toward borders to complete quilt top.

I Heart Paris

