

tamarakATE
ORIGAMIOASIS
starry migrations
quilt

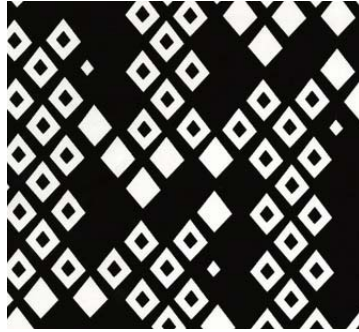


Starry Migration Quilt

Fabric Requirements



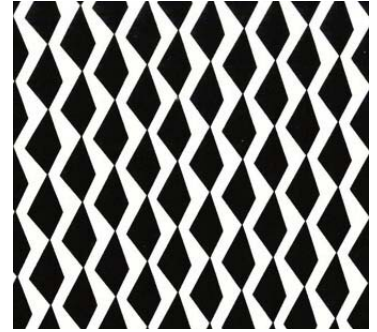
DC6600 BLACK
MIDNIGHT TRAIN
1/4 yard



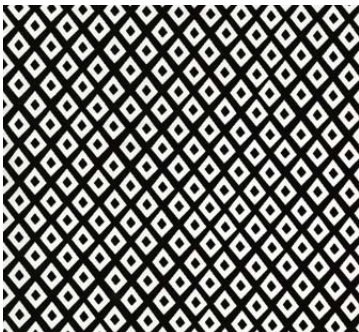
DC6405 BLACK
DIAMONDS IN THEIR EYES
1/4 yard



DC6404 BLACK
THICKET
1/4 yard



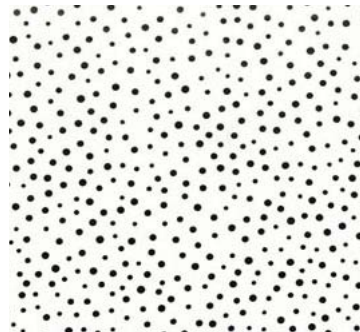
DC6400 BLACK
MOUNTAIN AND VALLEY
1/4 yard



DC6406 BLACK
SPOT
1/4 yard



DC6600 WHITE
MIDNIGHT TRAIN
1/4 yard



DC6186 WHITE
FRECKLED
1/2 yard



DC6398 BLUE
SHOW YOUR COLORS
1/2 yard



DC6406 STARFRUIT
SPOT
1/4 yard



DC6399 STARFRUIT
FOLD
1/4 yard



SC5333 BRIGHT WHITE
COTTON COUTURE
2 yards



DC6399 STARFRUIT
FOLD
BACKING: 1 1/2 yards

Starry Migration Quilt

Finished Quilt Size: 41" x 53" Skill Level: Beginner

Cutting Instructions:

- DC6186 WHITE - FRECKLED - Cut 5 rows 2½" x width of fabric (WOF) for binding.
- Cut the following numbers of 2½" and 3" squares from each of the following fabrics:

FABRIC	CUT 2½" SQUARES	CUT 3" SQUARES
DC6600 BLACK MIDNIGHT TRAIN	16	2
DC6405 BLACK DIAMONDS IN THEIR EYES	15	3
DC6404 BLACK THICKET	6	2
DC6400 BLACK MOUNTAIN AND VALLEY	23	1
DC6406 BLACK SPOT	21	0
DC6600 WHITE MIDNIGHT TRAIN	27	0
DC6186 WHITE FRECKLED	20	0
*** DC6398 BLUE SHOW YOUR COLORS	*** 8	*** 2
DC6406 STARFRUIT SPOT	12	4
DC6399 STARFRUIT FOLD	7	2
SC5333 BRIGHT WHITE COTTON COUTURE	Cut 23 rows 2½" x WOF. Sub-cut into (391) 2½" squares.	16

*** DC6398 BLUE - SHOW YOUR COLORS - This fabric needs to be fussy cut to show only the yellow zebras. Cut accordingly.



Starry Migration Quilt

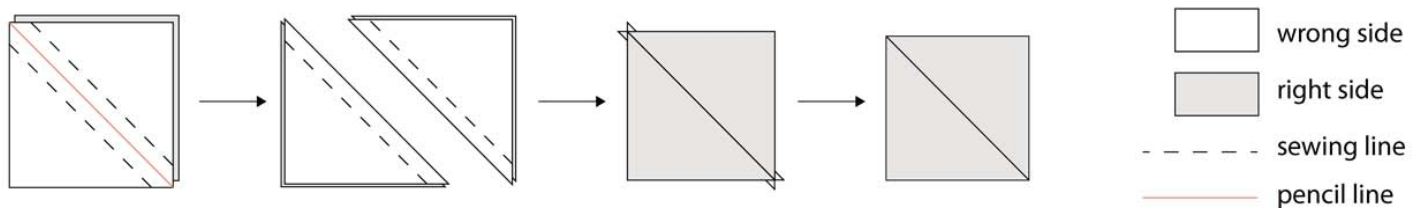
Also Needed:

- 41" x 53" quilt batting.
- A rotary cutter, a long acrylic ruler, cutting mat, white thread, scissors, pins, pencil.

Making Half Square Triangles:

With right sides together, place a white 3" square on a patterned 3" square and draw a diagonal line (with a pencil) from one corner to another (Keeping in mind the direction the print runs on the fabrics, refer to the Quilt Piecing Diagram to determine which direction the diagonal line should run for each set of triangles in order to avoid having upside-down zebras, or diamonds lying on their sides). Use this line as a guide to sew a $\frac{1}{4}$ " seam down one side of the line. Turn your square around and repeat down the other side of the line. Cut directly along the pencil line, resulting in two new squares when opened. Press the seams open.

Place one corner of your acrylic ruler on top of the sewn square, lining up the **seam line** (not the fabric edges) with the 45 degree diagonal ruler guides and making sure you have at least $2\frac{1}{2}$ " square of fabric under the ruler. (The accuracy of this step is important for perfectly matched corners when piecing the quilt). Trim the 2 exposed edges with your rotary cutter, spin the fabric around to the opposite corner and repeat, leaving a perfect $2\frac{1}{2}$ " square of fabric. You will have a few of these left over at the end.



Piecing Quilt Top:

- All seams are $\frac{1}{4}$ "
- Make sure all pieces will lie with printed pattern facing the same direction when piecing.

Using the Quilt Piecing Diagram as a reference, lay out squares (including the squares you just made) in 21 vertical rows of 27 squares, to show a gradual movement of color and intensity of pattern.

Sew together all squares in the first vertical row. Set it aside and continue with other rows, placing each row beside the former as finished, so as to keep them in the correct order. Press all seams in first row toward the bottom of the quilt. Press seams in second row toward the top. Keep alternating in this fashion across the quilt.

Pin these rows together in the right sequence and stitch. Press seams all in one direction.

Assembling Quilt:

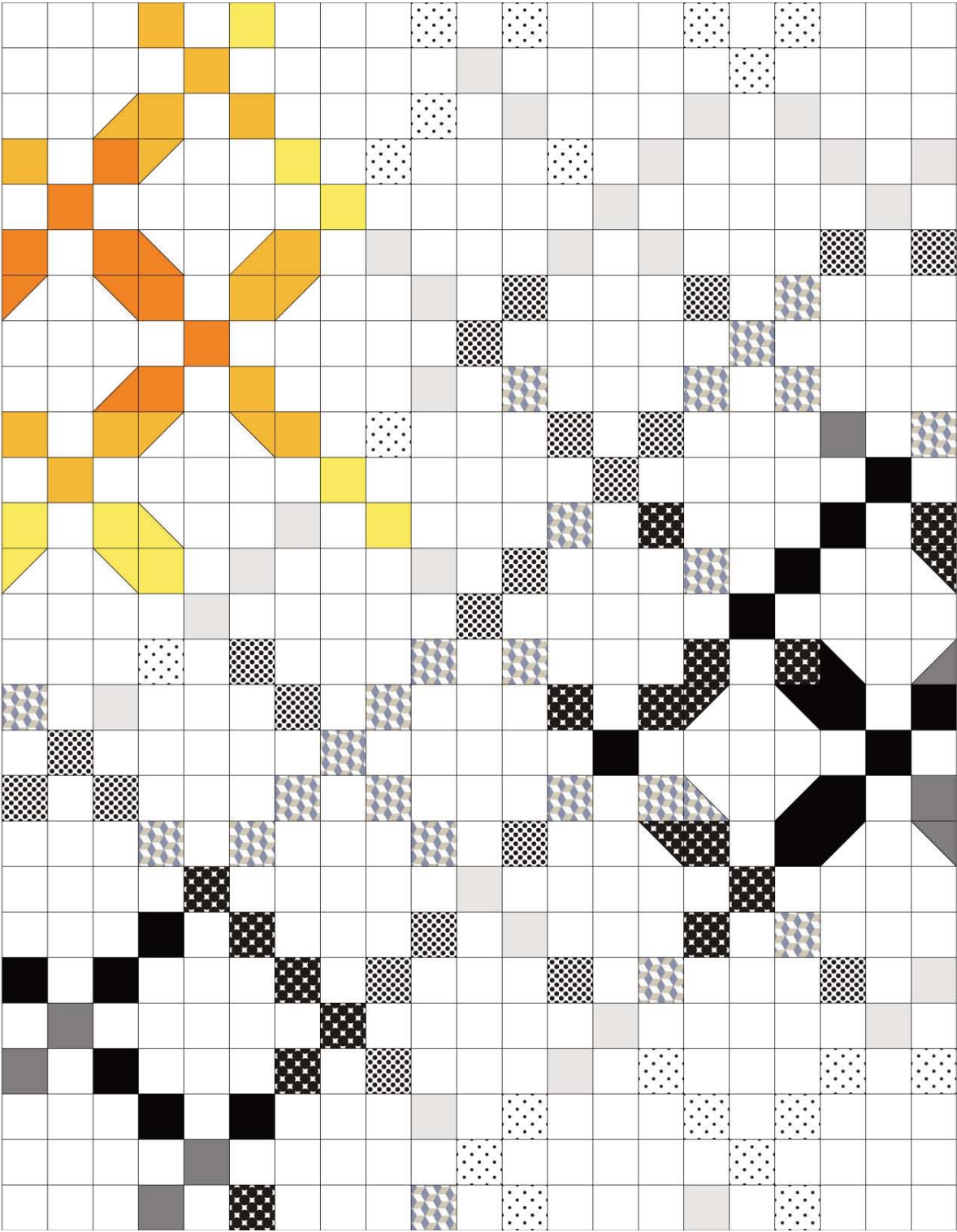
Square up quilt top. Layer backing, batting and quilt top. Baste or pin.











Quilt as desired.

Join binding strips together and bind in your preferred fashion.

Starry Migration Quilt

Quilt Piecing Diagram



-  FOLD
-  SPOT - STARFRUIT
-  SHOW YOUR COLORS
-  FRECKLED
-  MIDNIGHT TRAIN - WHITE
-  SPOT - BLACK
-  MOUNTAIN AND VALLEY
-  THICKET
-  DIAMONDS IN THEIR EYES
-  MIDNIGHT TRAIN - BLACK