

# STRAW DAISY CHEVRON

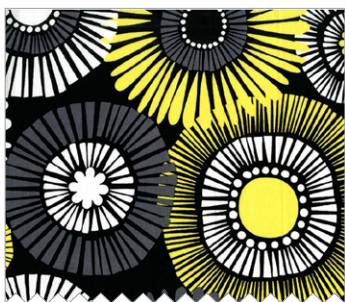


LEVEL: EASY | SIZE: 50" W X 64" H | QUILT DESIGNED BY ELLEN MAXWELL

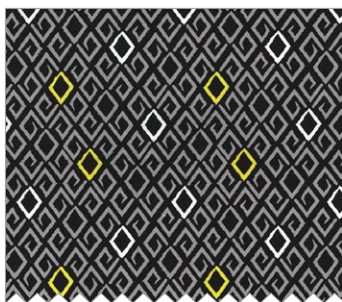


# FABRIC REQUIREMENTS

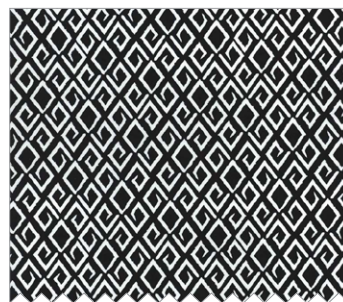
4 YARDS BACKING



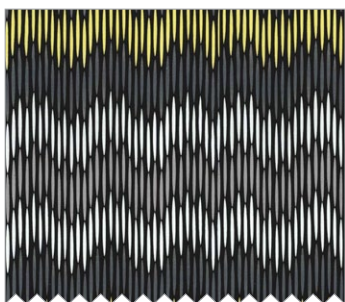
CX5485 Straw  
Straw Daisy  
1/2 yard



CX6542 Citron  
Aziza  
1/4 yard



CX6542 Black  
Aziza  
1/4 yard



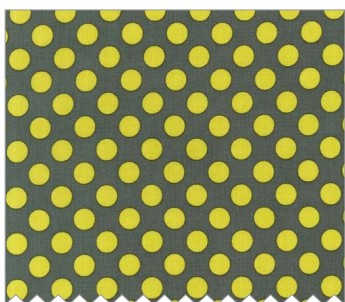
CX6591 Citron  
Asha  
1/2 yard



SC5333 Straw  
Cotton Couture  
1/2 yard



SC5333 Gray  
Cotton Couture  
2/3 yard



CX1492 Starfruit  
Ta Dot  
4 yards



SC5333 Bright White  
Cotton Couture  
1 3/4 yards

## "Straw Daisy Chevron"

Quilt by Ellen Maxwell

Size: Approximately 50" x 64" Skill Level : Easy

### Materials

Fabric	Yardage	Cutting
CX5485 Straw Straw Daisy	1/2 yard	Cut (2) strips – 8 1/2" x W.O.F. Cut (20) 2 1/2" x 8 1/2" rectangles
CX6542 Citron Aziza	1/4 yard	Cut (1) strip - 8 1/2" x W.O.F. Cut (16) 2 1/2" x 8 1/2"
CX6542 Black Aziza	1/4 yard	Cut (1) strip - 8 1/2" x W.O.F. Cut (13) 2 1/2" x 8 1/2"
CX6591 Citron Asha	1/2 yard	Cut (2) strips - 8 1/2" x W.O.F. Cut (17) 2 1/2" x 8 1/2"
SC5333 Straw Cotton Couture	1/2 yard	Cut (2) strips - 8 1/2" x W.O.F. Cut (16) 2 1/2" x 8 1/2"
SC5333 Gray Cotton Couture	2/3 yard	Cut (1) strip - 8 1/2" x W.O.F. Cut (13) 2 1/2" x 8 1/2" Cut (6) strips 2 1/4" x W.O.F. -binding
CX1492 Starfruit Ta Dot	4 yards	Use for backing
SC5333 Bright White Cotton Couture	1 3/4 yards	Cut (5) strips – 8 1/2" x W.O.F. Cut (82) 2 1/2" x 8 1/2" Cut (6) strips – 2 1/2" x W.O.F. Cut (12) 2 1/2" x 2 1/2" Cut (12) 2 1/2" x 4 1/2" Cut (12) 2 1/2" x 6 1/2"

### Disclaimers

This pattern is provided as a courtesy to quilt stores, catalogs, and quilters. Michael Miller Fabrics, LLC is not responsible for the accuracy of any kits packaged to accompany this pattern. Please direct any inquiries to the kit maker.

Yardage requirements for this pattern may allow for excess yardage to accommodate specific placement of motifs or to allow for any fussy-cutting to achieve the finished quilt design.

While every attempt has been made to give accurate measurements, yardage requirements, and construction directions; this does not allow personal variations in measuring, cutting, and or sewing. The enclosed directions were used in the construction of the original quilt.

### Directions:

This quilt is stripped VERTICALLY – left to right – and then rows are sewn together.

Best to use a design wall or lay out on the floor.

Fun to machine quilt vertically as well.