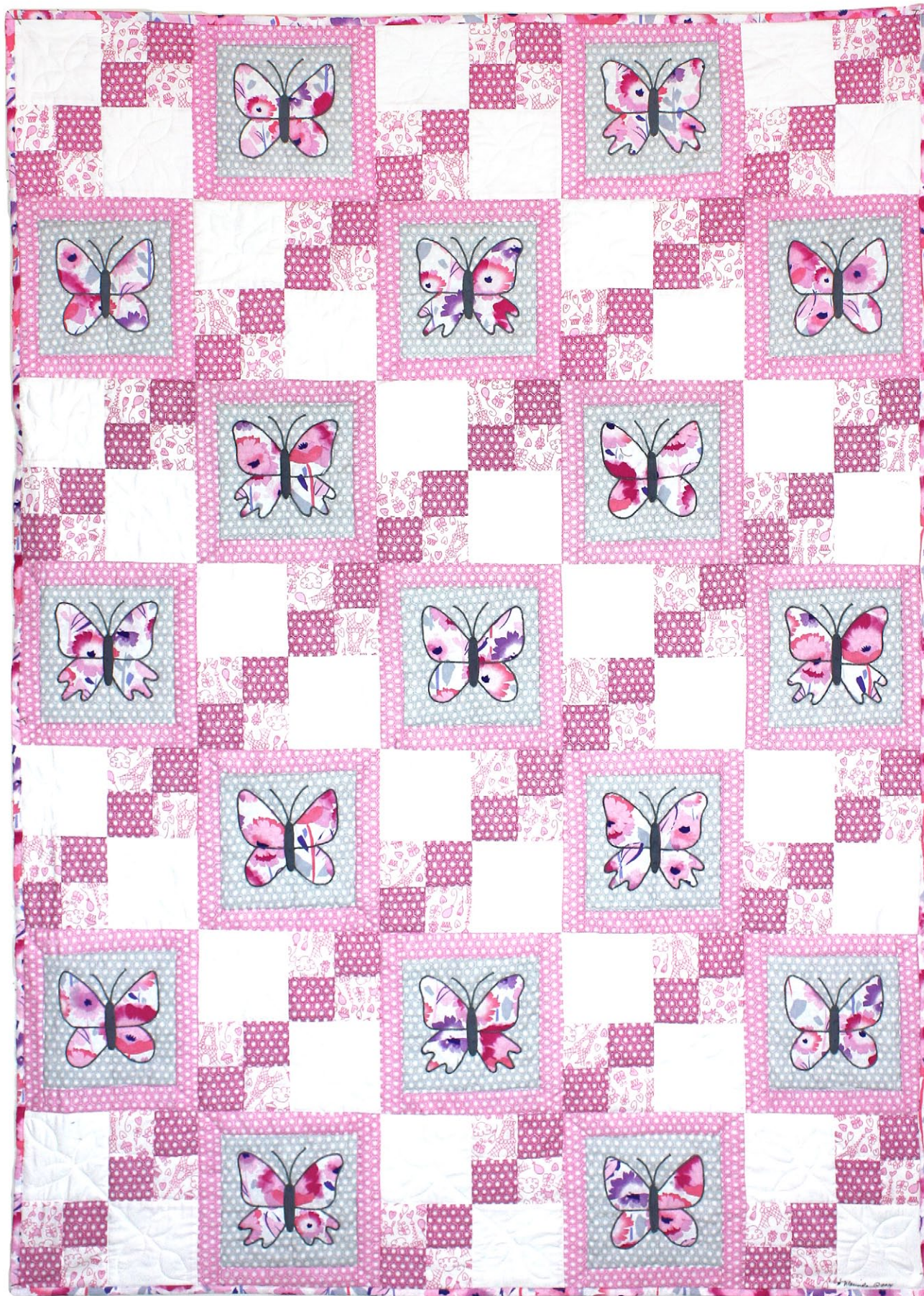


JOSEPHINE'S BUTTERFLIES



LEVEL: CONFIDENT BEGINNER | SIZE: 40" W X 56" H | QUILT DESIGNED BY MARINDA STEWART

FABRIC REQUIREMENTS

45" X 60" YARDS BACKING & BATTING



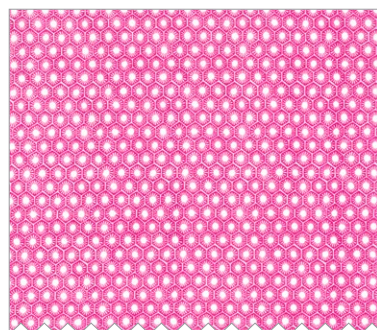
PC6582 Bloom
Josephine
3/4 yard



DC6512 Fog
Sun Tiles
5/8 yard



DC6512 Pink
Sun Tiles
5/8 yard



DC6512 Fuchsia
Sun Tiles
3/8 yard



CX6554 Pink
Petite Paris
3/8 yard



Clipdot
Gray
3" x 12" piece

"Josephine's Butterflies"

Quilt by Marinda Stewart

Size: Approximately 40" x 56" Skill Level : Confident Beginner

Materials

Fabric	Yardage	Cutting
PC6582 Bloom Josephine	3/4 yard	(5) 2 1/2" x W.O.F. – binding (8) Butterfly #1 (see patterns) (9) Butterfly #2 (see patterns)
DC6512 Fog Sun Tiles	5/8 yard	(17) 6 1/2" squares
DC6512 Pink Sun Tiles	5/8 yard	(34) 1" x 6 1/2" (34) 1" x 8 1/2"
DC6512 Fuchsia Sun Tiles	3/8 yard	(5) 2 1/2" x W.O.F.
CX6554 Pink Petite Paris	3/8 yard	(5) 2 1/2" x W.O.F.
Clipdot Gray	3" x 12" piece	(17) Butterfly Bodies (see pattern)
Also Needed: 45" x 60" backing, 45" x 60" batting, threads to match, scissors, straight pins, rotary cutter, acrylic ruler, mat, and fusible web. OPTIONAL: (but recommended) iron-on tear-away stabilizer.		

Disclaimers

This pattern is provided as a courtesy to quilt stores, catalogs, and quilters. Michael Miller Fabrics, LLC is not responsible for the accuracy of any kits packaged to accompany this pattern. Please direct any inquiries to the kit maker.

Yardage requirements for this pattern may allow for excess yardage to accommodate specific placement of motifs or to allow for any fussy-cutting to achieve the finished quilt design.

While every attempt has been made to give accurate measurements, yardage requirements, and construction directions; this does not allow personal variations in measuring, cutting, and or sewing. The enclosed directions were used in the construction of the original quilt.

Directions:

1. Following manufacturer's directions, trace (8) #1 butterflies, (9) #2 butterflies, and (17) butterfly bodies onto the paper side. Rough cut out. Iron all the butterflies onto the wrong side of PC6582. Iron the butterfly bodies onto the wrong side of the clip dot. Cut out all pieces on the pattern lines.
2. Center one butterfly in middle of one DC6512 Fog 6 ½" square. Remove paper backing. Iron in place. Remove paper from one butterfly body. Iron in place in the center of the butterfly between the wings as shown. Repeat for (17) blocks total. Machine satin stitch all around raw edges as shown. Add antennae at this time. OPTIONAL: (but recommended) iron iron-on tear-away stabilizer on the back of each square before stitching. Remove all traces of stabilizer after stitching. NOTE: Stabilizer improves the stitch quality and helps eliminate any distortions from stitching.
3. Sew one DC6512 Pink 1" x 6 ½" piece to the top and bottom of one butterfly square. Sew one DC6512 Pink 1" x 8 ½" piece to each side. Make (17) total. Set blocks aside.
4. For the 4 ½" square checkerboard units – sew together one each DC6512 Fuchsia 2 ½" x W.O.F. strip and CX6554 2 ½" x W.O.F. strip. Cut pieced strip into 2 ½" segments. Make (72) pieces total. Sew together two segments into one 4 ½" checkerboard. Make (36) 4 ½" checkerboard units.
5. Sew together (2) SC5333 4 ½" squares with (2) 4 ½" checkerboard units into one 8 ½" square 4-patch as shown. Make (18) 4-patch blocks total.
6. Row #1, #3, #5, and #7 - Begin and end with a 4-patch block and alternate with one each butterfly #1 and #2. Refer to photo for placement. Row #2, #4, and #6 – Begin and end with a butterfly block and alternate with two 4-patch blocks.
7. Sew rows together alternating odd numbered rows with even numbered rows as shown.
8. Layer backing, batting, and quilt top. Baste.
9. Quilt as desired.
10. Bind quilt using PC6582 2 ½" strips pieced as needed for length.

"Josephine's Butterflies"

PATTERNS

