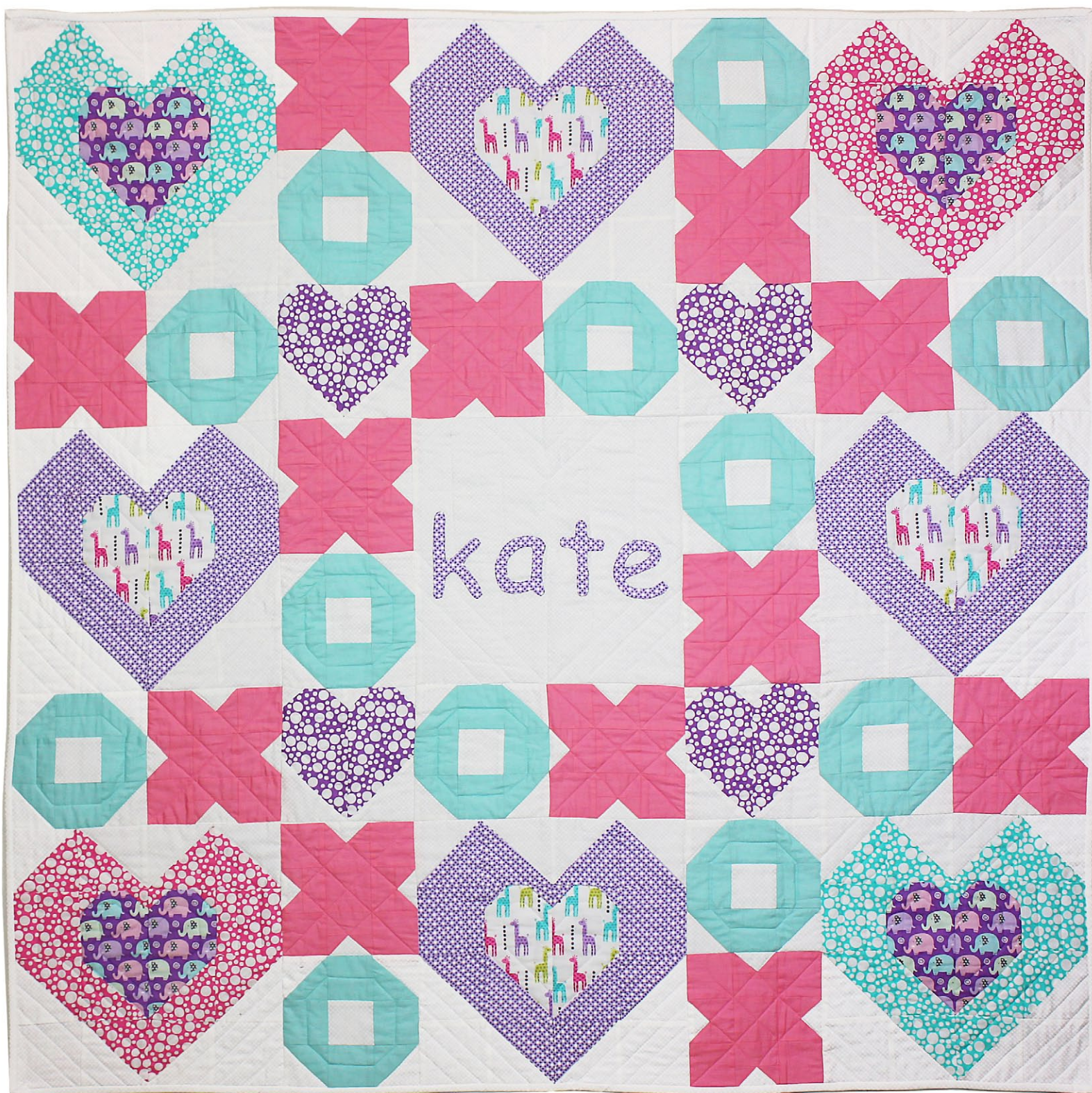


# XOXO



LEVEL: INTERMEDIATE | SIZE: 48 1/2" W X 48 1/2" H | QUILT DESIGNED BY ELLEN MAXWELL

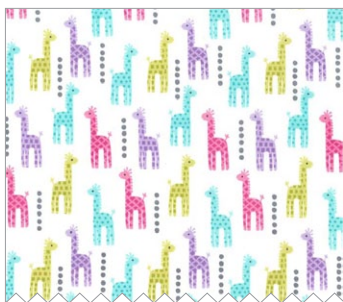


# FABRIC REQUIREMENTS

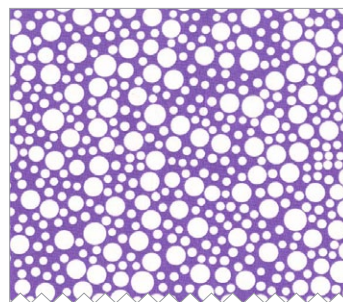
3 1/3 YARDS BACKING



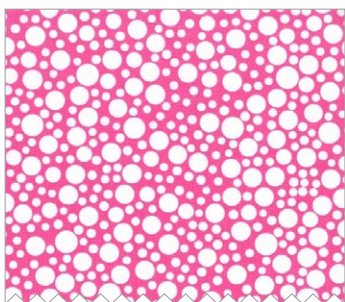
CX6547 Lilac  
Mini Elephants  
1/4 yard



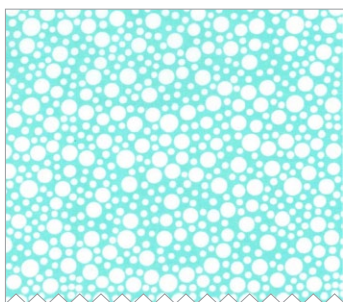
CX6550 Pink  
Mini Giraffes  
1/4 yard



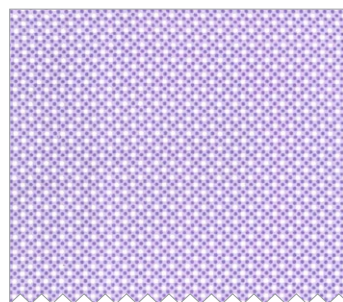
CX3136 Purple  
Play Dot  
1/4 yard



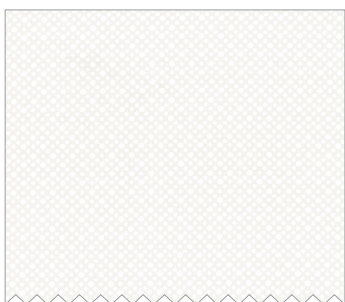
CX3136 Pink  
Play Dot  
1/4 yard



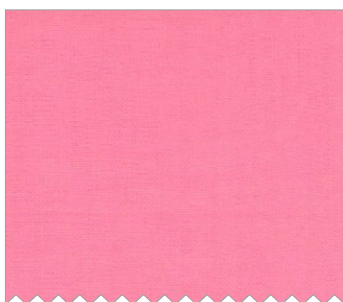
CX3136 Aqua  
Play Dot  
1/4 yard



CX6322 Opal  
Dim Dots  
1/4 yard



CX6322 Snow  
Dim Dots  
1 3/4 yards



SC5333 Bubblegum  
Cotton Couture  
5/8 yard



SC5333 Aqua  
Cotton Couture  
5/8 yard

**"XOXO"**  
Quilt by Ellen Maxwell

Size: Approximately 48 1/2" x 48 1/2" Skill Level : Intermediate

**Materials**

Fabric	Yardage	Cutting
CX6547 Lilac Mini Elephants	1/4 yard	Cut a 6 1/2" strip (W.O.F.) Cut (8) rectangles 3 1/2" x 6 1/2"
CX6550 Pink Mini Giraffes	1/4 yard	Cut a 6 1/2" strip (W.O.F.) Cut (8) rectangles 3 1/2" x 6 1/2"
CX3136 Purple Play Dot	1/4 yard	Cut a 6 1/2" strip (W.O.F.) Cut (8) rectangles 3 1/2" x 6 1/2"
CX3136 Pink Play Dot	1/4 yard	Cut (8) squares 3 1/2" x 3 1/2" Cut (8) squares 4" x 4" Cut (8) squares 1 1/2" x 1 1/2"
CX3136 Aqua Play Dot	1/4 yard	Cut (8) squares 3 1/2" x 3 1/2" Cut (8) squares 4" x 4" Cut (8) squares 1 1/2" x 1 1/2"
CX6322 Opal Dim Dots	1/4 yard	Cut (8) squares 3 1/2" x 3 1/2" Cut (8) squares 4" x 4" Cut (8) squares 1 1/2" x 1 1/2"
CX6322 Snow Dim Dots	1 3/4 yards	Cut (1) square 12 1/2" x 12 1/2" (center) Cut (16) squares 3 1/2" x 3 1/2" (large hearts) Cut (32) squares 4" x 4" (large hearts) Cut (12) squares 2 1/2" x 2 1/2" (O's) Cut (24) squares 3" x 3" (O's) Cut (48) rectangles 1 1/2" x 2 1/2" (X's) Cut (5) strips 2 1/4" x W.O.F. - binding
SC5333 Bubblegum Cotton Couture	5/8 yard	Cut (60) squares 2 1/2" x 2 1/2" Cut (48) squares 1 1/2" x 1 1/2" Cut (48) squares 1 1/2" x 2 1/2"
SC5333 Aqua Cotton Couture	5/8 yard	Cut (48) squares 2 1/2" x 2 1/2" Cut (24) squares 3" x 3"
Backing Fabric	3 1/3 yards	Cut in half and sew sections together.

## Disclaimers

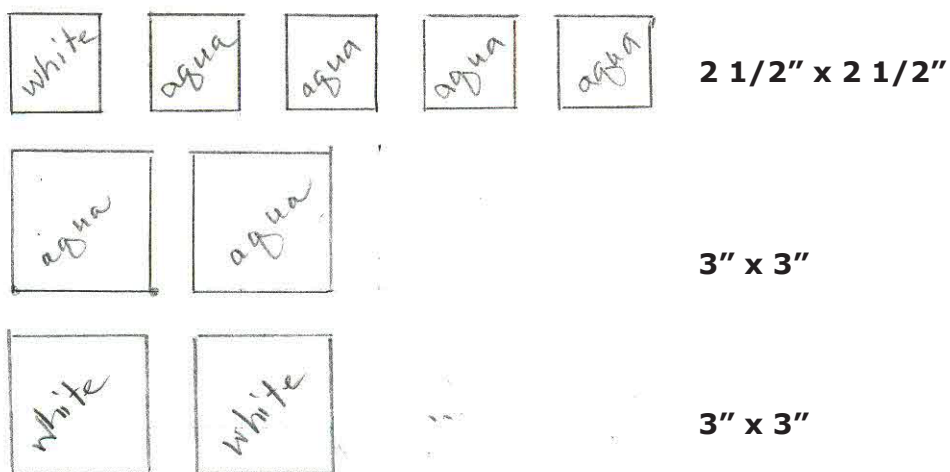
This pattern is provided as a courtesy to quilt stores, catalogs, and quilters. Michael Miller Fabrics, LLC is not responsible for the accuracy of any kits packaged to accompany this pattern. Please direct any inquiries to the kit maker.

Yardage requirements for this pattern may allow for excess yardage to accommodate specific placement of motifs or to allow for any fussy-cutting to achieve the finished quilt design.

While every attempt has been made to give accurate measurements, yardage requirements, and construction directions; this does not allow personal variations in measuring, cutting, and or sewing. The enclosed directions were used in the construction of the original quilt.

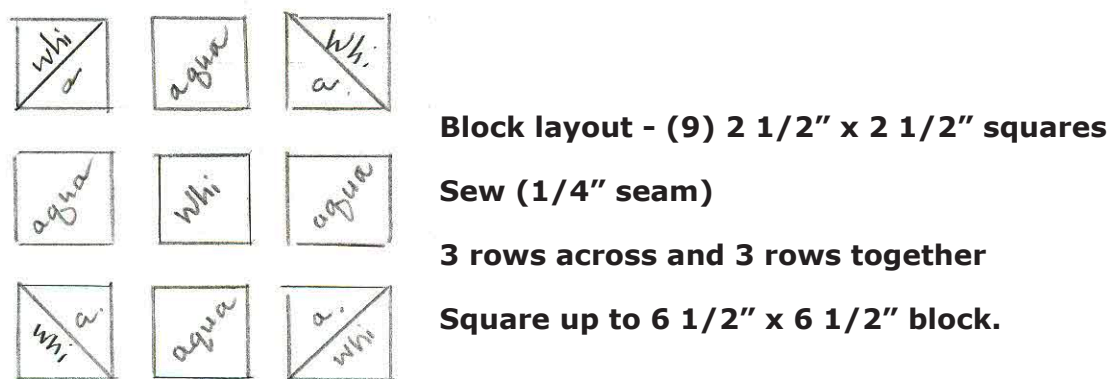
## Directions:

### Making the 'O's



1. Make 8 half square triangles. On the wrong side of the white  $3'' \times 3''$  squares – draw one diagonal pencil line – corner to corner. Layer each white square with an aqua square – right sides together.

Machine stitch  $\frac{1}{4}''$  on each side of the pencil line. Then cut on the pencil line. Press open. Square – up to  $2\frac{1}{2}'' \times 2\frac{1}{2}''$ .

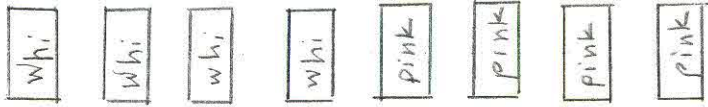


2. Repeat 11 times to total 12 'O' blocks.

## Making the 'X's



2 1/2" x 2 1/2"



1 1/2" x 2 1/2"



1 1/2" x 1 1/2"

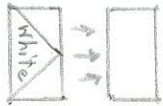
1. Make 4 Flying Geese blocks: Draw one diagonal pencil line on the wrong side of each 1 1/2" x 1 1/2" pink

square. Next – right sides together, place one pink square on the corner of a white rectangle – 1 1/2" x 2 1/2".



Stitch on the pencil line. Press the pink square back. Cut away the bottom 2 layers.

Repeat on the left side. Make 3 more. Stitch Flying Geese blocks to pink 1 1/2" x 2 1/2" rectangle.



Make 4. Will measure 2 1/2" x 2 1/2"



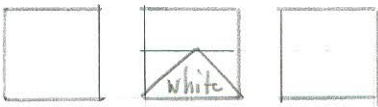
Block layout – (9) 2 1/2" x 2 1/2" squares

Sew (1/4" seam)



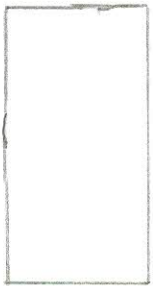
3 rows across and 3 rows together

Square up to 6 1/2" x 6 1/2"



2. Repeat 11 times to total 12 'X' blocks.

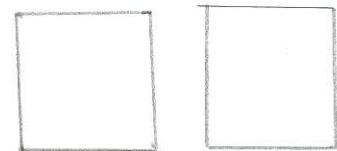
## MAKING THE SMALL HEARTS



**3 1/2" x 6 1/2" Purple Dots**

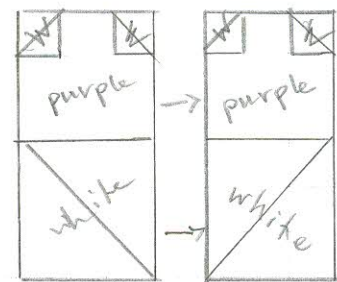


**1 1/2" x 1 1/2" White**



**3 1/2" x 3 1/2" White**

**Draw a pencil line diagonally on the wrong side of all white squares**



**Layout**

Stitch on diagonal lines

Press to corners

Cut away two bottom layers

Sew the (2) 3 1/2" x 6 1/2" sections together.

Make 3 additional hearts from purple dots for a total of 4.

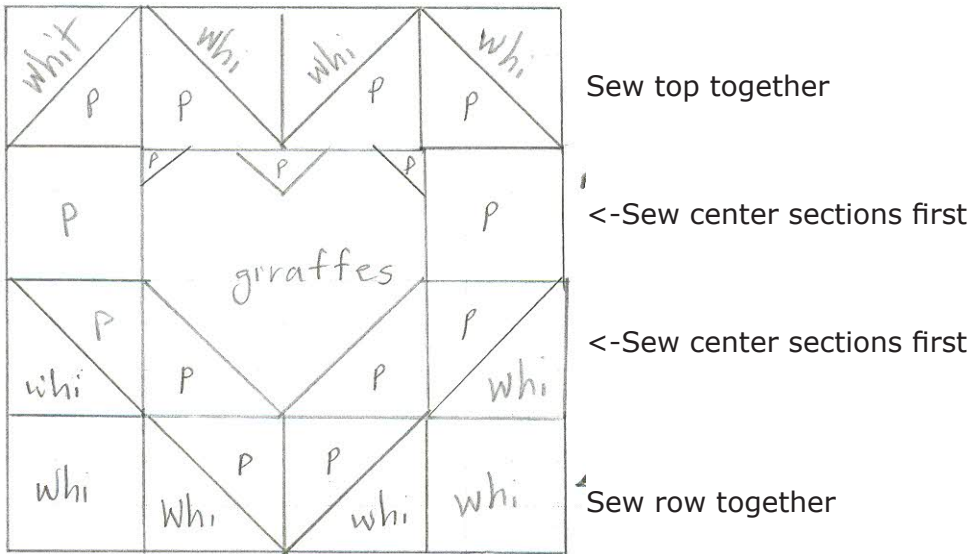
Repeat above sequence for:

4 heart blocks – with mini elephants as the hearts and purple dim dots at the corners

4 heart blocks – with mini elephants as the hearts and pink play dots at the corners

## MAKING THE LARGE HEARTS

1. Construct 4 large hearts with a mini giraffes heart in the center – contrast color is purple dim dots.
2. Draw a pencil line diagonally on the wrong side of the 4" x 4" squares. Match with 4" x 4" purple squares – right sides together. Stitch 1/4" on each side of the pencil line. Cut on the pencil line to make (2) half square triangle blocks. Square up to 3 1/2" x 3 1/2". Repeat to make a total of 8 half square triangle blocks.



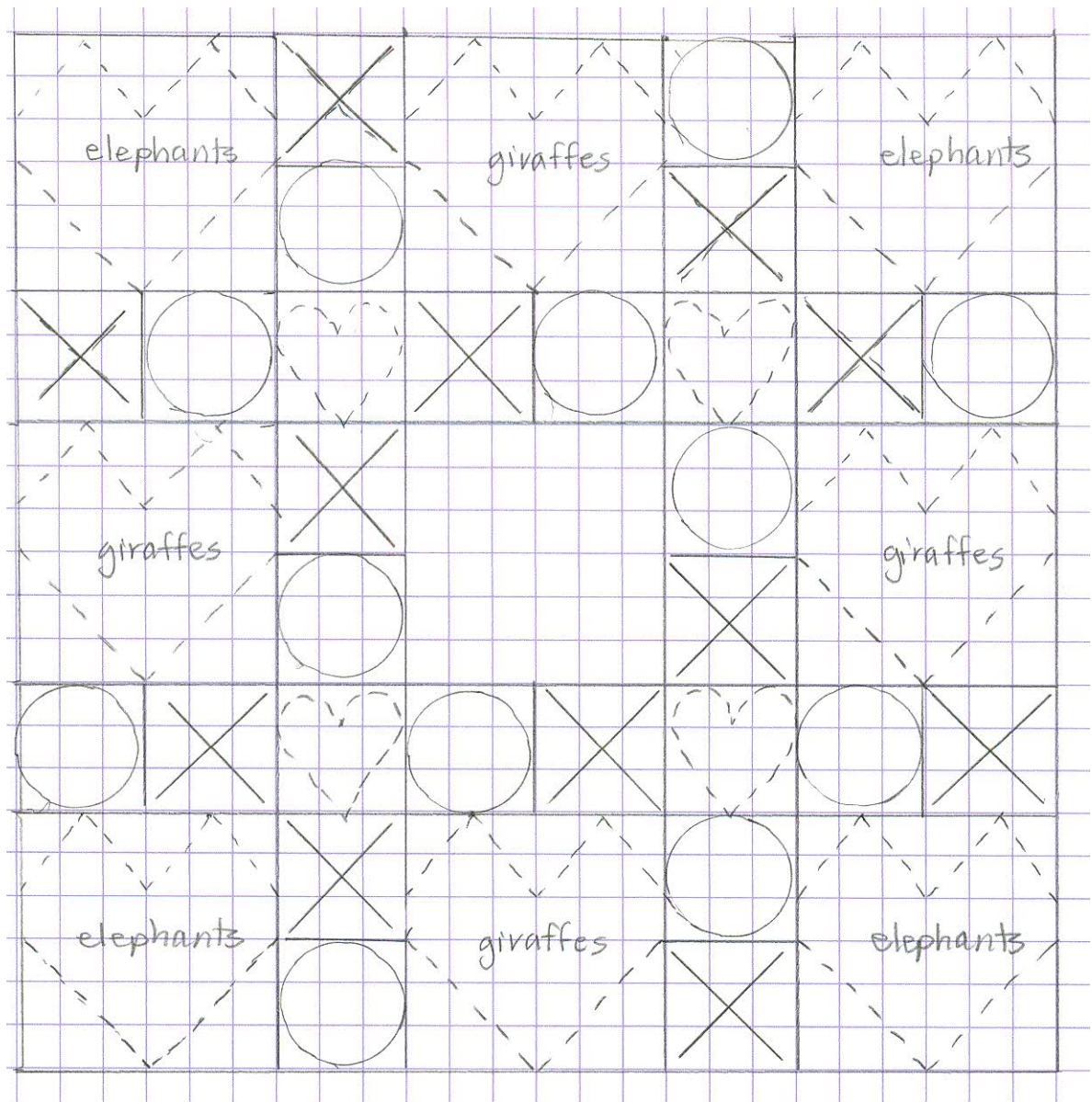
Then sew all sections together to make 12 1/2" x 12 1/2" block.

3. Construct (4) additional large heart blocks with mini elephants in the center, hearts and pink playdots surrounding it.

### CENTER SQUARE

Applique word or name in 12 1/2" x 12 1/2" white square. Enlarge letters as needed.





Quilt Layout.

Sew in vertical sections.

Quilt as desired.

Bind with 2 1/2" strips of white.

Sew end to end and sew to quilt as French Fold Binding.



a b c d e

f g h i j k

l m n o p q

r s t u v w

x

y

z