

MENAGERIE LATTICE



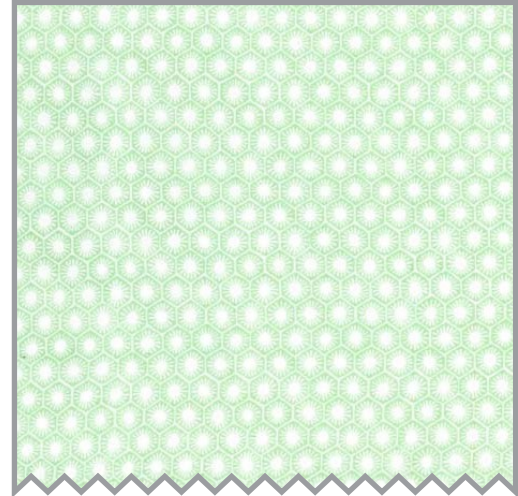
LEVEL: INTERMEDIATE | SIZE: 47" W X 63" H | QUILT DESIGNED BY MARINDA STEWART

FABRIC REQUIREMENTS

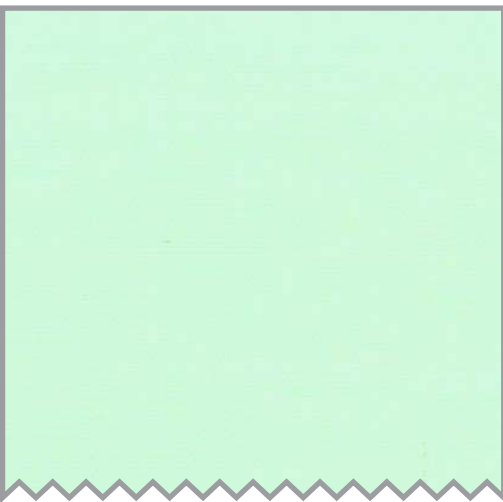
52" X 68" BACKING AND 52" X 68" BATTING



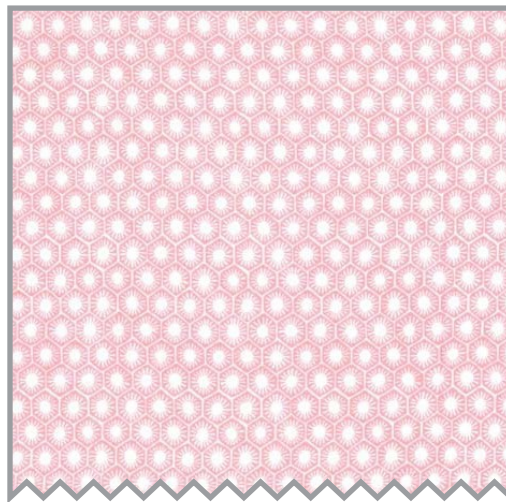
DC6506 Multi
Menagerie Collage Panel
2 yards



DC6512 Pastille
Sun Tiles
1 yard



SC5333 Mist
Cotton Couture
1/2 yard



DC6512 Shell
Sun Tiles
1/2 yard



DC6418 Sorbet
Drop Cloth
3/4 yard

"Menagerie Lattice"
 Quilt designed by Marinda Stewart
 Size: 47" x 63" Skill Level: Intermediate

Materials

Fabric	Yardage	Cutting
DC6506 Multi Menagerie Collage Panel	2 yards	(17) 3 ½" squares – cut on point *
DC6512 Pastille Sun Tiles	1 yard	(3) 12" squares (2) 18" squares
SC5333 Mist Cotton Couture	1/2 yard	(6) 2 ½" x W.O.F. – binding
DC6512 Shell Sun Tiles	1/2 yard	(34) 1" x 8 ½" (34) 1" x 9 ½"
DC6418 Sorbet Drop Cloth	3/4 yard	(22) 2" x 9 ½" (2) 2" x 22 ½" (2) 2" x 43 ½" ** (2) 2" x 54 ½" **
Also Needed: 52" x 68" backing, 52" x 68" batting, threads to match, scissors, straight pins, rotary cutter, acrylic ruler, pencil, and mat. OPTIONAL (but recommended) acrylic 8 ½" clear ruler		
* Center each square on a motif ** Pieced for length		

Disclaimers

This pattern is provided as a courtesy to quilt stores, catalogs, and quilters. Michael Miller Fabrics, LLC is not responsible for the accuracy of any kits packaged to accompany this pattern. Please direct any inquiries to the kit maker.

Yardage requirements for this pattern may allow for excess yardage to accommodate specific placement of motifs or to allow for any fussy-cutting to achieve the finished quilt design.

While every attempt has been made to give accurate measurements, yardage requirements, and construction directions; this does not allow personal variations in measuring, cutting, and or sewing. The enclosed directions were used in the construction of the original quilt.

This quilt has many bias edges. Each should be stay stitched 1/8" from the edge without stretching the fabric to stabilize the fabric before sewing. Handle each piece with bias edges as little as possible during assembly.

Directions

1. Sew one DC6512 Shell 1" x 8 1/2" piece to opposite sides of one DC6504 8 1/2" square. Sew one DC6512 Shell 1" x 9 1/2" piece to each remaining side. Be careful NOT to stretch the bias edges of the 8 1/2" square. Make (17) total.
2. The quilt will be assembled in (5) diagonal rows. Row #1 and #5. Begin and end with one DC6418 2" x 9 1/2" and alternate with the squares. Use (2) squares and (3) strips. Row #2 and #4 use (4) squares. Row #3 use (5) squares.
3. To assemble the top, start from the upper left corner and work diagonally across the quilt. Sew one DC6418 2" x 22 1/2" piece to the top edge of one 2-square row. Cut one DC6512 Pastille 12" square in half diagonally. Sew one triangle to each end as shown. Set aside. Row #2 – Sew one DC6418 2" x 43 1/2" piece to the top edge of a 4-square row. Cut one DC6512 Pastille 12" square in half diagonally. Sew one triangle to the left side of the row as shown. Set the other triangle aside. Sew Row #2 to the bottom of Row #1. Row #3 – Sew one DC6418 2" x 54 1/2" piece to each side of the 5-square row. Sew row #3 to the bottom of Row #2. Row #4 – repeat step for Row #2 sewing the DC6418 2" x 43 1/2" strip to the bottom edge of the 4-square row. Sew the remaining DC6512 Pastille triangle to the right end of Row #4. Sew to the bottom of Row #3. Row #5 – sew DC6418 2" x 22 1/2" piece to the bottom of the remaining 2-square row. Divide the remaining DC6512 Pastille 12" square as before and sew to each end of Row #5. Sew Row #5 to the bottom of the quilt as shown.
4. Cut each DC6512 Pastille 18" square in half diagonally. Sew one to each corner of the quilt as shown.
5. Layer backing, batting, and quilt top. Baste.
6. Quilt as desired.
7. Bind quilt using SC5333 Mist 2 1/2" strips pieced as needed for length.