

# TARTAN ROSE BORDER



LEVEL: INTERMEDIATE | SIZE: 41" W X 57" H | QUILT DESIGNED BY MARINDA STEWART



# FABRIC REQUIREMENTS

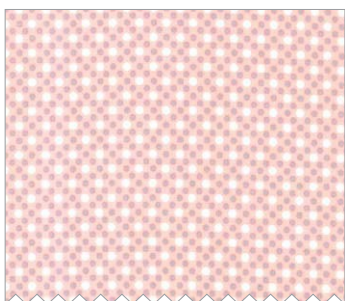
45" X 60" BACKING AND 45" X 60" BATTING



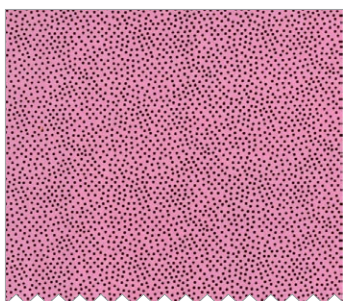
**CX6482 Black**  
Tartan Rose Border  
4 1/2 yard yards



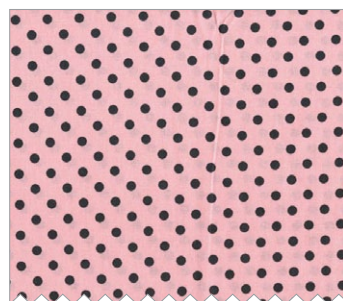
**CX3584 Earth**  
Clown Stripe  
3/4 yard



**CX6322 Confection**  
Dim Dots  
1/4 yard



**CX1065 Pastel**  
Garden Pindot  
1/4 yard



**CX2490 Dumb Dot**  
Blossom  
1/4 yard



**K1033 (Blush Pink)**  
Krystal  
1/4 yard



**CJ4816 Pink**  
Painter's Canvas  
Fat 1/8



**CX4595 Gray**  
Zelda  
1/6 yard

## "Tartan Rose Border"

Quilt by Marinda Stewart

Size: Approximately 41" x 57" Skill Level : Intermediate

### Materials

Fabric	Yardage	Cutting
CX6482 Black Tartan Rose Border	4 1/2 yards **	(2) 5 1/2" x 44 1/2" * (2) 5 1/2" x 28 1/2" * (40) Outer triangles (8) 4 1/2" squares (4) Corner triangles (8) Rose appliques
CX3584 Earth Clown Stripe	3/4 yard	(2) 1 1/2" x 32 1/2" (2) 1 1/2" x 18 1/2" 6 1/2 yards 1 3/4" bias-pieced for length
CX2490 Dumb Dot Blossom	1/4 yard	(8) Inner Triangles (8) 4 1/2" squares
CX6322 Confection Dim Dots	1/4 yard	(8) Inner Triangles (16) 2 1/2" squares
CX1065 Pastel Garden Pindot	1/4 yard	(8) Inner Triangles (16) 2 1/2" squares
CX4595 Gray Zelda	1/6 yard	(8) 4 1/2" squares
K1033 (Blush Pink) Krystal	1/4 yard	(8) Inner Triangles
CJ4816 Pink Painter's Canvas	Fat 1/8	(4) Inner Triangles
<b>Also Needed:</b> 45" x 60" backing (piece from leftover CX6482), 45" x 60" batting, threads to match, scissors, straight pins, rotary cutter, acrylic ruler, fusible web, and mat. <b>OPTIONAL:</b> (but recommended) iron-on tear-away stabilizer.		
* Center on lace border ** Piece remaining CX6482 for quilt backing		

## Disclaimers

This pattern is provided as a courtesy to quilt stores, catalogs, and quilters. Michael Miller Fabrics, LLC is not responsible for the accuracy of any kits packaged to accompany this pattern. Please direct any inquiries to the kit maker.

Yardage requirements for this pattern may allow for excess yardage to accommodate specific placement of motifs or to allow for any fussy-cutting to achieve the finished quilt design.

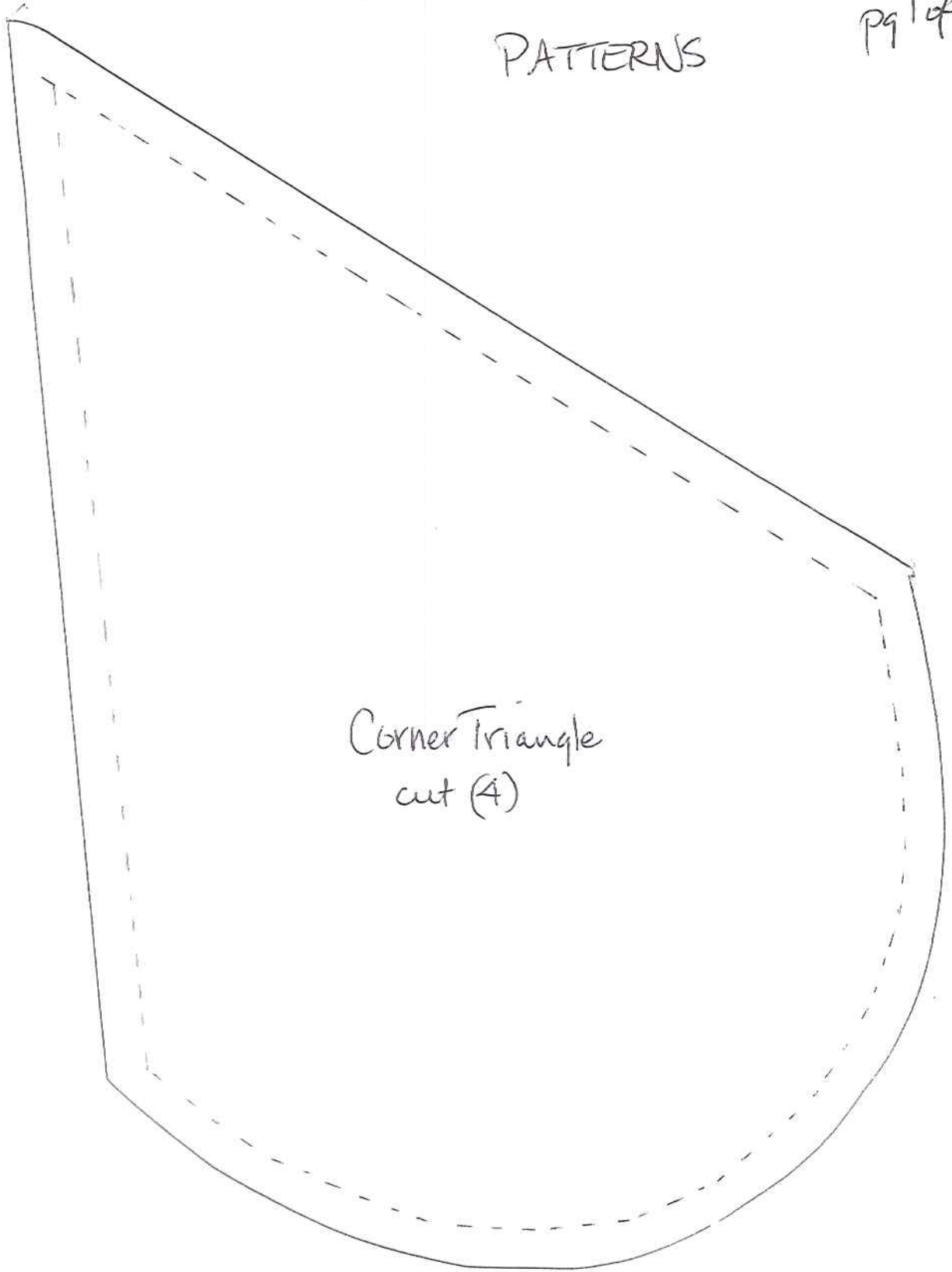
While every attempt has been made to give accurate measurements, yardage requirements, and construction directions; this does not allow personal variations in measuring, cutting, and or sewing. The enclosed directions were used in the construction of the original quilt.

## Directions:

1. Rough cut out (8) assorted rose appliques from CX6482. Following manufacturer's directions iron fusible web onto the back of each rose. Cut out. Remove paper backing. Iron applique onto the right side of CX2490 4 1/2" square. Center motifs. Machine satin stitch raw edges with matching threads to finish. Make (8).  
OPTIONAL (but recommended) iron a small piece of iron-on tear-away stabilizer onto the back of each 4 1/2" square before stitching. Stitch. Remove all traces of stabilizer after stitching. Stabilizer improves stitch quality and eliminates fabric distortion. Set aside.
2. From CX6322 2 1/2" squares and CX1065 2 1/2" squares piece two of each together to make (1) 4-patch checkerboard block. Make (8) total. Set aside.
3. To assemble the center of the quilt sew (4) 4 1/2" blocks into a row. Make (8) rows. Sew rows together in the order of construction.  
Row #1 – CX6482, CX2490, CX4595, 4-patch  
Row #2 – CX4595, 4-patch, CX6482, CX2490  
Row #3 – CX2490, CX6482, 4-patch, CX4595  
Row #4 – 4-patch, CX4595, CX2490, CX6482  
Row #5 – CX2490, CX6482, CX4595, 4-patch  
Row #6 – CX6482, 4-patch, CX2490, CX4595  
Row #7 – 4-patch, CX2490, CX4595, CX6482  
Row #8 – CX4595, 4-patch, CX6482, CX2490
4. Sew one CX3584 1 1/2" x 32 1/2" piece to each side of the quilt. Sew one CX3584 1 1/2" x 18 1/2" to the top and bottom of the quilt.
5. Sew one CX6482 5 1/2" x 44 1/2" piece to each side of the quilt to within 1/4" of each end. Have scalloped edge of the lace facing out. Sew one CX6482 5 1/2" x 28 1/2" piece to the top and bottom to within 1/4" of the edges. Finish the corners by mitering the fabric as shown.
6. For the outer border – sew together (11) assorted inner triangles (CX6322, CX2490, CX1065, K1033, and (1) CJ4816) with (12) outer triangles. Sew to each side of the quilt to within 1/4" of each end. For the top and bottom sew together (7) assorted inner triangles (with (1) CJ4816 on each side) with (8) outer triangles. Sew one corner triangle to each end of each strip as shown. Sew to the top and bottom of the quilt. Pivot at each corner to join the corner triangles to the sides of the quilt.
7. Layer backing, batting, and quilt top. Baste.
8. Quilt as desired.
9. Bind quilt using 6 1/2 yards of 1 3/4" bias CX3584 pieced for length. Ease bias around curves. Clip bias at inner corners. Turn bias to the back of the quilt and hand stitch in place to finish. Pleat excess fabric at corners to handle fullness.

"Tartan Rose Border" Quilt  
PATTERNS

pg 1 of 2

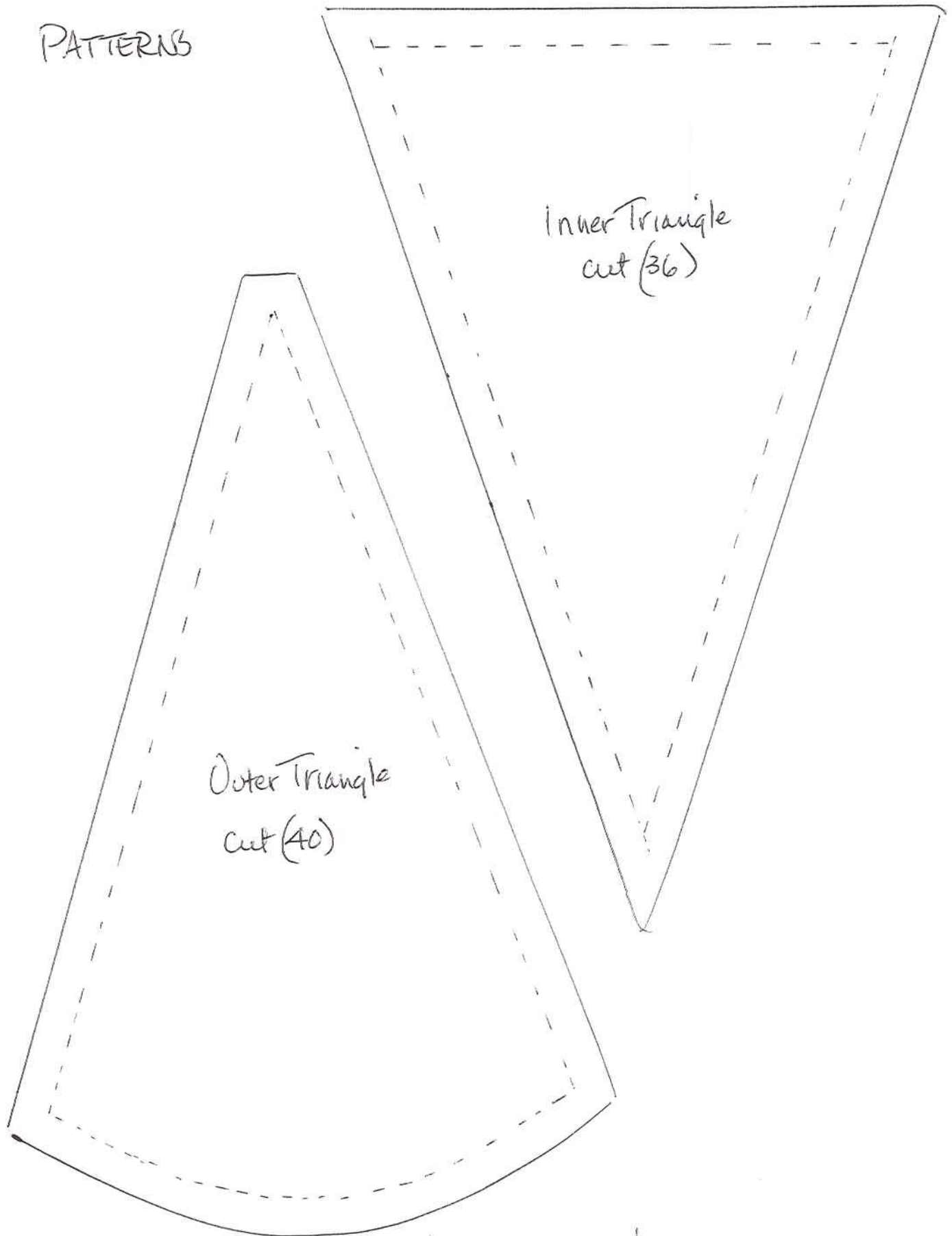


\*Marinda ©2014

# "Tartan Rose Border" Quilt

pg 2 of 2

## PATTERNS



\* Ulanida © 2014