

USES PRE-CUTS

Fairy Frost



FABRIC REQUIREMENTS



FQ077

BINDING AND INNER BORDER: 1 1/4 yards of CM0376 Fancy

BACKGROUND: 3 yards of SC5333 Cotton Couture / Bright White or CM0376 Snow

BACKING: 4 yards of SC5333 Cotton Couture / Bright White or CM0376 Snow (Optional)

FLOWERS AND BLOCKS: 15 Fat Quarters (one of each)

PACK INCLUDES THE BELOW PRINTS:



CM0376_DUSTY ROSE



CM0376_LOVE



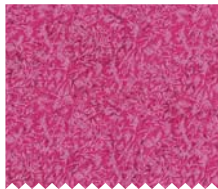
CM0376_RASPBERRY



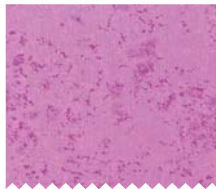
CM0376_PETAL



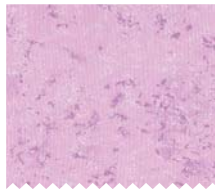
CM0376_PEONY



CM0376_PASSION



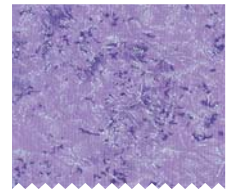
CM0376_AZALEA



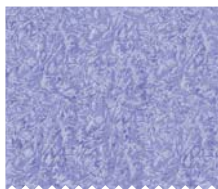
CM0376_GIRL



CM0376_LILAC



CM0376_FANCY



CM0376_BLIZZARD



CM0376_TWILIGHT



CM0376_PLATINUM



CM0376_ZIRCONIUM



CM0376_SNOW

"Fairy Frost - Pink"

Quilt by Heidi Pridemore

Size: Approximately 60" x 72" Skill Level: Advanced Beginner

Materials

Cutting instructions

Please Note: All strips are cut across the width of fabric (WOF) from selvage to selvage edge except where noted.

	Fabric	Yardage	Cutting
(A)	CM0376-Snow (or Plain White)	2 ¾ yards	<ul style="list-style-type: none"> • Cut three 12 ½" x 60 ½" strips from LOF. • Cut four 4 ½" x WOF strips. Sew the strips together, end to end with a diagonal seam, and cut two 4 ½" x 64 ½" strips. • Cut three 4 ½" x WOF strips. Sew the strips together, end to end with a diagonal seam, and cut two 4 ½" x 52 ½" strips.
(B)	CM0376-Fancy	1 ¼ yards	<ul style="list-style-type: none"> • Cut seven 2 ½" x WOF strips. Sew the strips together, end to end with a diagonal seam, and cut two 2 ½" x 60 ½" strips and two 2 ½" x 52 ½" strips. • Cut seven 2 ½" x WOF strips for the binding.
(C)	CM0376-Zirconium	Fat Quarter	<ul style="list-style-type: none"> • Cut fourteen 3 ⅞" squares. • Cut four 2 ⅞" squares.
(D)	CM0376-Fancy	Fat Quarter	<ul style="list-style-type: none"> • Cut fourteen 3 ⅞" squares. • Cut four 2 ⅞" squares.
(E)	CM0376-Lilac	Fat Quarter	<ul style="list-style-type: none"> • Cut thirteen 3 ⅞" squares. • Cut four 2 ⅞" squares.
(F)	CM0376-Petal	Fat Quarter	<ul style="list-style-type: none"> • Cut thirteen 3 ⅞" squares.
(G)	CM0376-Girl	Fat Quarter	<ul style="list-style-type: none"> • Cut thirteen 3 ⅞" squares. • Cut four 2 ⅞" squares.
(H)	CM0376-Snow	Fat Quarter	<ul style="list-style-type: none"> • Cut thirteen 3 ⅞" squares.
(I)	CM0376-Blizzard	Fat Quarter	<ul style="list-style-type: none"> • See instructions to cut eight flower centers, two right scrolls and two left scrolls.
(J)	CM0376-Dusty Rose	Fat Quarter	<ul style="list-style-type: none"> • See instructions to cut thirty-two flower petals.
(K)	CM0376-Love	Fat Quarter	
(L)	CM0376-Azalea	Fat Quarter	
(M)	CM0376-Raspberry	Fat Quarter	
(N)	CM0376-Peony	Fat Quarter	
(O)	CM0376-Passion	Fat Quarter	
(P)	CM0376-Platinum	Fat Quarter	
(Q)	CM0376-Twilight	Fat Quarter	<ul style="list-style-type: none"> • See instructions to cut sixteen right scrolls.
Backing	CM0376-Snow (or Plain White)	4 yards	<ul style="list-style-type: none"> • Cut two 68" x WOF strips. Piece the strips together and trim to make the 68" x 80" pieced backing.

You will also need:

- Fusible web, 68" x 80" batting, threads to match, scissors, straight pins, acrylic ruler, rotary cutter and mat.

Disclaimers

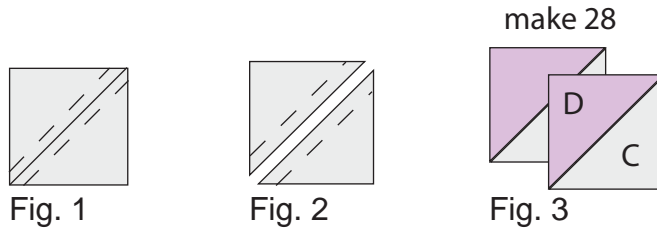
This pattern is provided as a courtesy to quilt stores, catalogs and quilters. Michael Miller Fabrics, LLC is not responsible for the accuracy of any kits packaged to accompany this pattern. Please direct any inquiries to the kit maker.

Yardage requirements for this pattern may allow for excess yardage to accommodate specific placement of motifs or to allow for any fussy-cutting to achieve the finished quilt design.

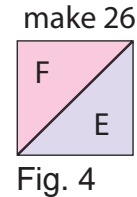
While every attempt has been made to give accurate measurements, yardage requirements and construction directions; this does not allow personal variations in measuring, cutting or sewing. The enclosed directions were used in the construction of the original quilt.

Block Assembly

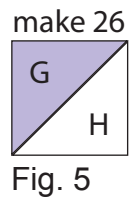
1. Place one $3\frac{7}{8}$ " Fabric C square on top of one $3\frac{7}{8}$ " Fabric D square, right sides together. Draw a line across the diagonal of the top square (Fig. 1). Sew $\frac{1}{4}$ " away from each side of the drawn diagonal line (Fig. 1). Cut the two squares apart on the drawn diagonal line (Fig. 2) to make two CD units (Fig. 3). Trim blocks to measure $3\frac{1}{2}$ " square. Repeat to make twenty-eight $3\frac{1}{2}$ " CD units total.



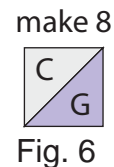
2. Repeat Step 1 using thirteen $3\frac{7}{8}$ " Fabric E squares and thirteen $3\frac{7}{8}$ " Fabric F squares to make twenty-six $3\frac{1}{2}$ " EF units (Fig. 4).



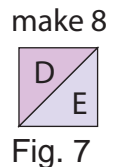
3. Repeat Step 1 using thirteen $3\frac{7}{8}$ " Fabric G squares and thirteen $3\frac{7}{8}$ " Fabric H squares to make twenty-six $3\frac{1}{2}$ " GH units (Fig. 5).



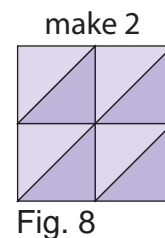
4. Repeat Step 1 using four $2\frac{7}{8}$ " Fabric C squares and four $2\frac{7}{8}$ " Fabric G squares to make eight $2\frac{1}{2}$ " CG units (Fig. 6).



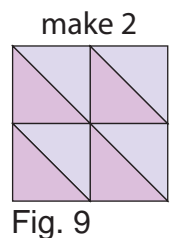
5. Repeat Step 1 using four $2\frac{7}{8}$ " Fabric D squares and four $2\frac{7}{8}$ " Fabric E squares to make eight $2\frac{1}{2}$ " DE units (Fig. 7).



6. Sew four CG units together to make one CG corner square (Fig. 8). Repeat to make a second CG corner square.



7. Sew four DE units together to make one DE corner square (Fig. 9). Repeat to make a second DE corner square.



8. Sew twenty assorted half-square triangles into one column with the half-square triangle angle going from upper left to lower right corner. Sew twenty assorted half-square triangles into one column with the half-square triangle angle going from upper right to lower left corner. Sew the two columns together to make one half-square triangle Column (Fig. 10). Repeat to make a second half-square triangle column.
9. Following the manufacturer's instructions, trace the listed number of each template onto the paper side of the fusible web. Roughly cut out each template about $\frac{1}{8}$ " outside the drawn lines.
10. Press each template onto the wrong side of the fabrics as listed in the cutting instructions. Cut out each template on the drawn lines.
11. Refer to the quilt photo to arrange and press the various flower petals, flower centers, right scrolls and left scrolls onto the three $12\frac{1}{2}$ " x $60\frac{1}{2}$ " Fabric A strips.
12. Finish the raw edges of each shape with a decorative stitch such as a buttonhole or satin stitch to make the flower columns.

Quilt Top Assembly (Refer to the Quilt Layout while assembling the quilt top.)

13. Sew two $2\frac{1}{2}$ " x $60\frac{1}{2}$ " Fabric B strips, three $12\frac{1}{2}$ " x $60\frac{1}{2}$ " Flower Columns and the two half-square columns together to make the quilt top.
14. Sew one $2\frac{1}{2}$ " x $52\frac{1}{2}$ " Fabric B strip to the top and to the bottom of the quilt top.
15. Sew one $4\frac{1}{2}$ " x $64\frac{1}{2}$ " Fabric A strip to each side of the quilt top.
16. Sew one DE corner to one end of a $4\frac{1}{2}$ " x $52\frac{1}{2}$ " Fabric A strip. Sew one GC corner to the opposite end of the Fabric A strip. Repeat to make a second strip. Sew the strips to the top and bottom of the quilt top.
17. Layer and quilt as desired.
18. Sew the seven $2\frac{1}{2}$ " x WOF Fabric B strips together, end-to-end with 45-degree seams, to make the binding. Fold this long strip in half lengthwise with wrong sides together and press
19. Bind as desired.

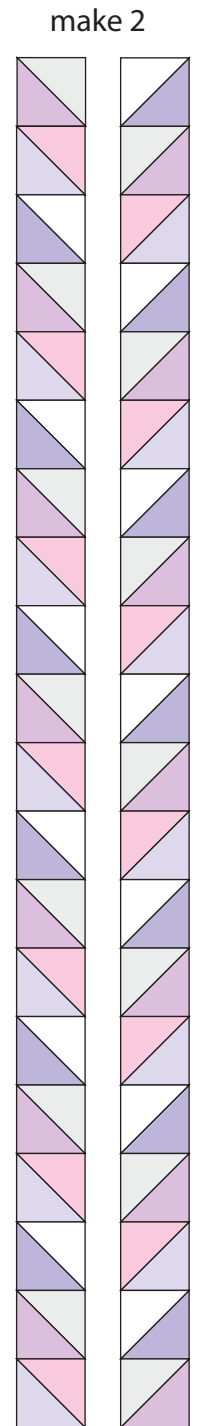
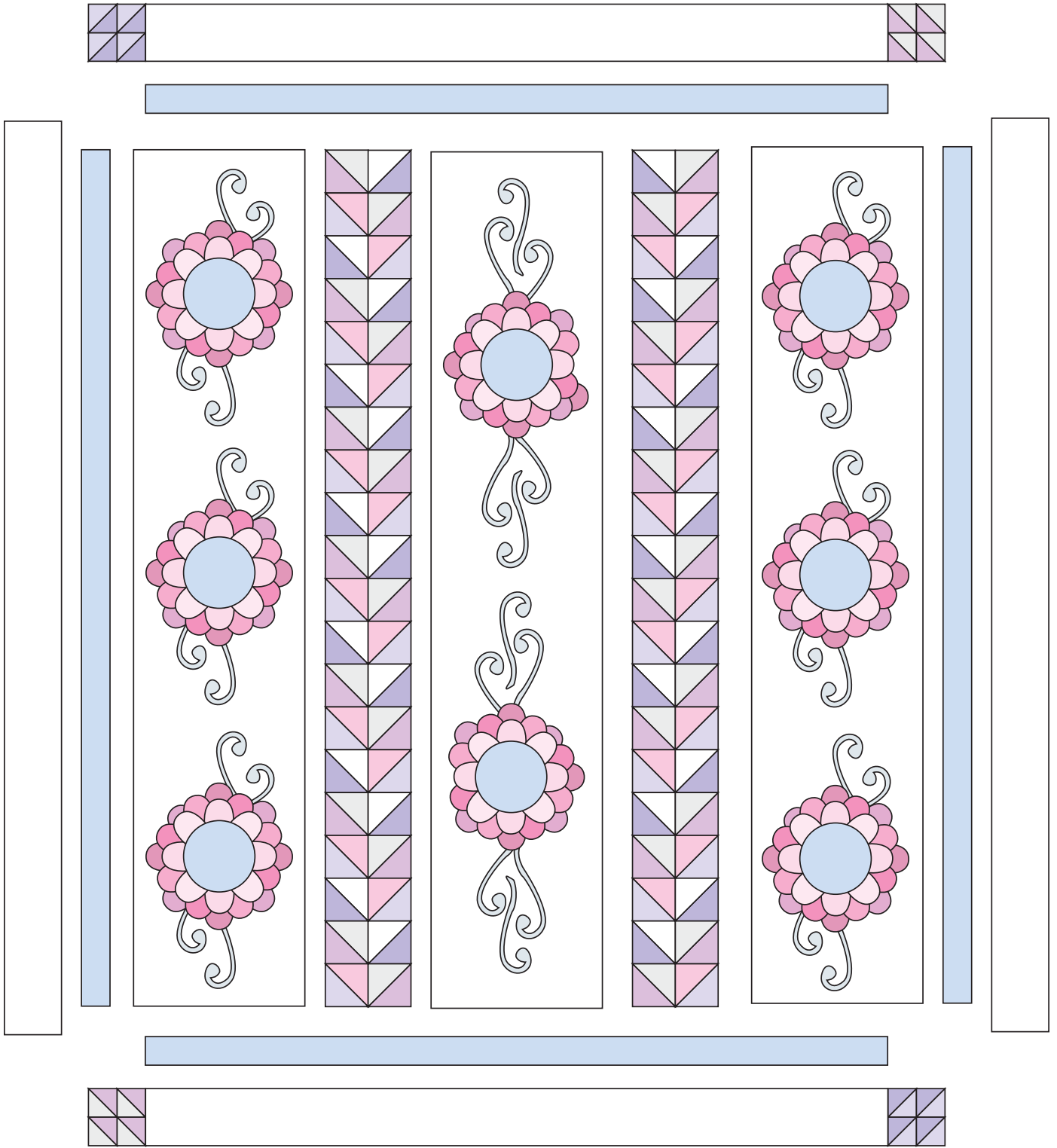


Fig. 10



Quilt Layout

Templates

