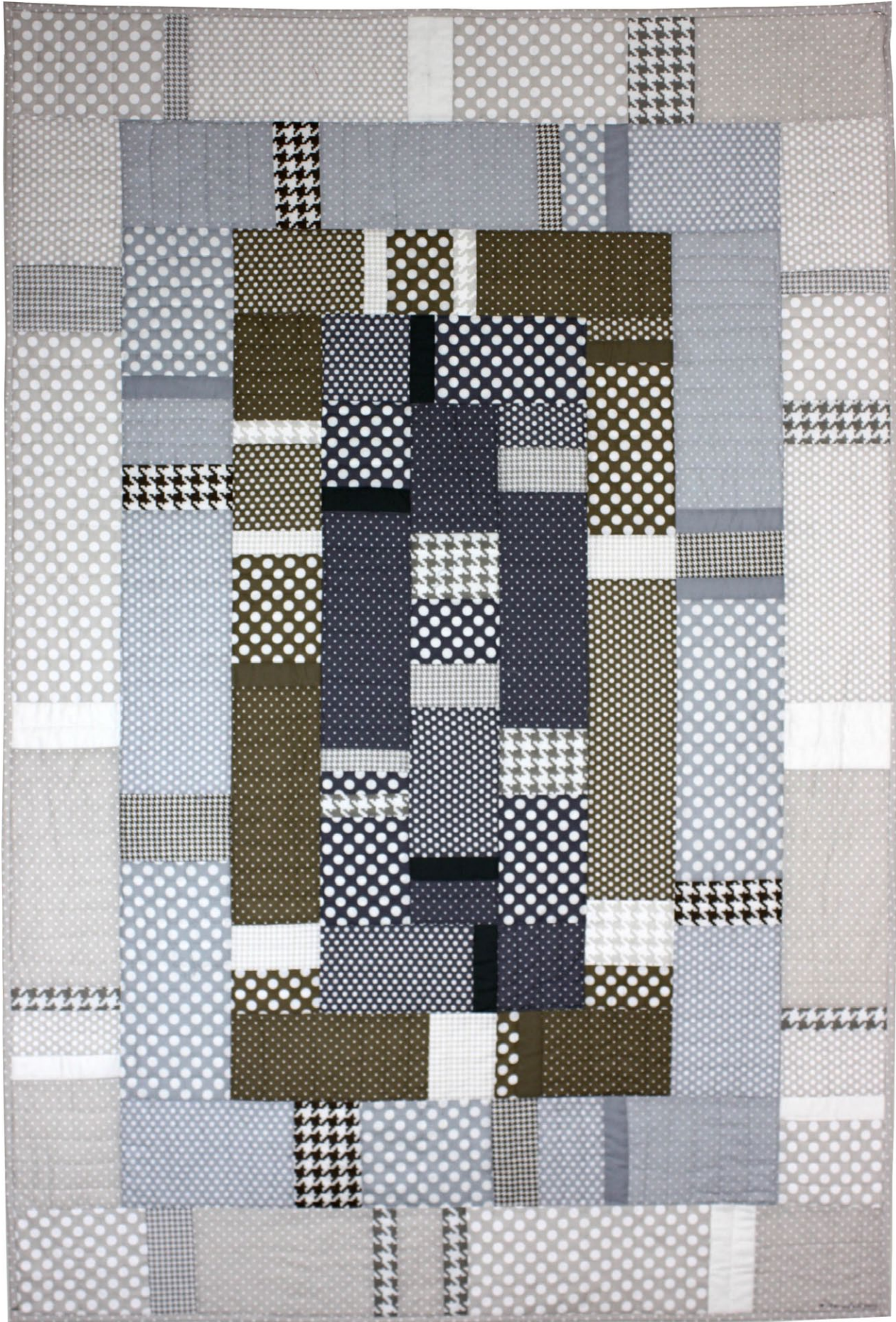


Urban Abstraction



Level: Confident Beginner | Size: 40" W x 60" H | Quilt Designed by Marinda Stewart



FABRIC REQUIREMENTS

45" x 65" backing and 45" x 65" batting



**SC5333 Gray
Cotton Couture
5" x 7" piece**



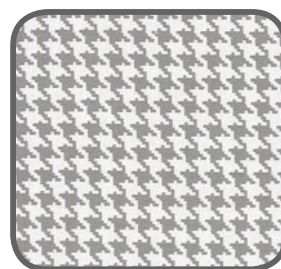
**CX1492 Graphite
Ta Dot
Fat 1/8**



**CX5518 Gray
Kiss Dot
5" x 15" piece**



**CX5514 Gray
Pinhead
1/8 yard**



**CX4835 Stone
Tiny Houndstooth
Fat 1/8**



**CX6363 Stone
Everyday Houndstooth
Fat 1/8**



**SC5333 Dirt
Cotton Couture
5" x 5"**



**CX1492 Dirt
Ta Dot
Fat 1/8**



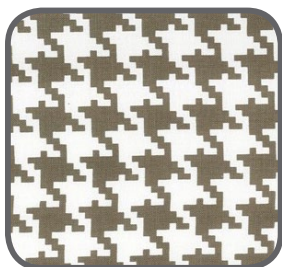
**CX5518 Dirt
Kiss Dot
Fat 1/8**



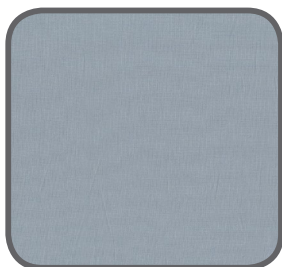
**CX5514 Dirt
Pinhead
1/8 yard**



**CX4835 Dirt
Tiny Houndstooth
5" x 10" piece**



**CX6363 Dirt
Everyday Houndstooth
5" x 7" piece**



**SC5333 Fog
Cotton Couture
6" x 8" piece**



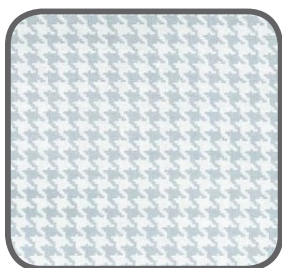
**CX1492 Fog
Ta Dot
1/6 yard**



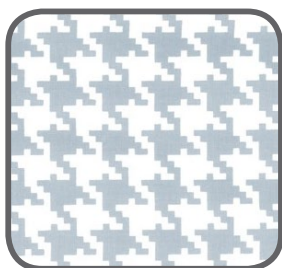
**CX5518 Fog
Kiss Dot
1/6 yard**



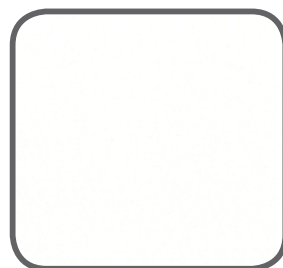
**CX5514 Fog
Pinhead
1/6 yard**



**CX4835 Fog
Tiny Houndstooth
6" x 11" piece**



**CX6363 Fog
Everyday Houndstooth
6" x 9" piece**



**SC5333 Soft White
Cotton Couture
6" x 11" piece**



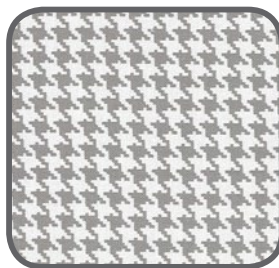
**CX1492 Cloud
Ta Dot
3/8 yard**



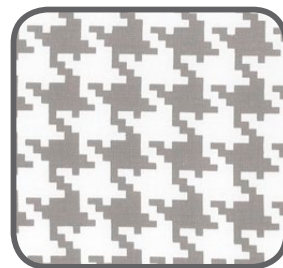
**CX5518 Cloud
Kiss Dot
3/8 yard**



**CX5514 Cloud
Pinhead
3/4 yard**



**CX4835 Stone
Tiny Houndstooth
Fat 1.8**



**CX6363 Stone
Everyday Houndstooth
Fat 1/8**

“Urban Abstraction”

Quilt by Marinda Stewart

Size: Approximately 40" x 60" Skill Level : Confident Beginner

Materials

Fabric	Yardage	Cutting
Round 1		
1 – “A” SC5333 Gray Cotton Couture	5" x 7" piece	(4) 1 ½" x 4 ½"
1 – “B” CX1492 Graphite Ta Dot	Fat 1/8	(1) 4 ½" x 1 ½" (1) 4 ½" x 3 ½" (1) 4 ½" Square (1) 4 ½" x 5 ½" (1) 4 ½" x 6 ½" (1) 4 ½" x 7 ½"
1 – “C” CX5518 Gray Kiss Dot	5" x 15" piece	(1) 4 ½" x 2 ½" (1) 4 ½" square (2) 4 ½" x 7 ½"
1 – “D” CX5514 Gray Pinhead	1/8 yard	1) 4 ½" x 2 ½" (1) 4 ½" square (1) 4 ½" x 6 ½" (2) 4 ½" x 11 ½"
1 & 4 – “E” * CX4835 Stone Tiny Houndstooth	Fat 1/8	(1) 4 ½" x 1 ½" (2) 4 ½" x 2 ½"
1 & 4 – “F” * CX6363 Stone Everyday Houndstooth	Fat 1/8	(1) 4 ½" x ½" (2) 4 ½" x 3 ½"

Round 2		
2 – “A” SC5333 Dirt Cotton Couture	5" x 5"	(3) 4 ½" x 1 ½"
2 – “B” CX1492 Dirt Ta Dot	Fat 1/8	(1) 4 ½" x 1 ½" (2) 4 ½" x 2 ½" (1) 4 ½" x 3 ½" (1) 4 ½" x 5 ½" (1) 4 ½" x 8 ½"
2 – “C” CX5518 Dirt Kiss Dot	Fat 1/8	(1) 4 ½" x 2 ½" (1) 4 ½" square (2) 4 ½" x 7 ½"
1 – “D” CX5514 Gray Pinhead	1/8 yard	(1) 4 ½" x 1 ½" (1) 4 ½" x 6 ½" (1) 4 ½" x 15 ½"
2 – “D” CX5514 Dirt Pinhead	1/8 yard	(1) 4 ½" x 5 ½" (1) 4 ½" x 6 ½" (2) 4 ½" x 9 ½" (1) 4 ½" x 11 ½"
2 – “E” CX4835 Dirt Tiny Houndstooth	5" x 10" piece	(2) 4 ½" x 1 ½" (2) 4 ½" x 2 ½" (1) 4 ½" x 3 ½"
2 – “F” CX6363 Dirt Everyday Houndstooth	5 " x 7" piece	(2) 4 ½" x 1 ½" (1) 4 ½" x 3 ½"

Round 3		
3 – "A" SC5333 Fog Cotton Couture	6" x 8" piece	(5) 5 1/2" x 1 1/2"
3 – "B" CX1492 Fog Ta Dot	1/6 yard	(1) 5 1/2" x 2 1/2" (1) 5 1/2" x 6 1/2" (1) 5 1/2" x 7 1/2" (1) 5 1/2" x 11 1/2" (1) 5 1/2" x 13 1/2"
3 – "C" CX5518 Fog Kiss Dot	1/6 yard	1) 5 1/2" x 3 1/2" (1) 5 1/2" x 7 1/2" (2) 5 1/2" x 8 1/2" (1) 5 1/2" x 13 1/2"
3 – "D" CX5514 Fog Pinhead	1/6 yard	(1) 5 1/2" x 3 1/2" (2) 5 1/2" x 7 1/2" (1) 5 1/2" x 10 1/2" (1) 5 1/2" x 13 1/2"
3 – "E" CX4835 Fog Tiny Houndstooth	6" x 11" piece	(1) 5 1/2" x 1 1/2" (2) 5 1/2" x 2 1/2" (1) 5 1/2" x 3 1/2"
3 – "F" CX6363 Fog Everyday Houndstooth	6" x 9" piece	(3) 5 1/2" x 2 1/2" (1) 5 1/2" x 3 1/2"

Round 4		
4 – "A" SC5333 Soft White Cotton Couture	6" x 11" piece	(2) 5 1/2" x 1 1/2" (3) 5 1/2" x 2 1/2" (1) 5 1/2" x 3 1/2"
4 – "B" CX1492 Cloud Ta Dot	3/8 yard	(1) 5 1/2" x 4 1/2" (1) 5 1/2" square (1) 5 1/2" x 6 1/2" (2) 5 1/2" x 7 1/2" (1) 5 1/2" x 8 1/2" (1) 5 1/2" x 11 1/2"
4 – "C" CX5518 Cloud Kiss Dot	3/8 yard	(1) 5 1/2" x 2 1/2" (1) 5 1/2" x 3 1/2" (2) 5 1/2" x 7 1/2" (1) 5 1/2" x 10 1/2" (1) 5 1/2" x 12 1/2"
4 – "D" CX5514 Cloud Pinhead	3/4 yard	(1) 5 1/2" x 2 1/2" (2) 5 1/2" x 6 1/2" (2) 5 1/2" x 9 1/2" (2) 5 1/2" x 11 1/2" (5) 2 1/2" x W.O.F. - binding
4 – "E" CX4835 Stone Tiny Houndstooth	(See 1 – "E")	(2) 5 1/2" x 1 1/2" (1) 5 1/2" x 2 1/2" (1) 5 1/2" x 3 1/2"
4 – "F" CX6363 Stone Everyday Houndstooth	(See 1 – "F")	(4) 5 1/2" x 1 1/2" (1) 5 1/2" x 2 1/2" (1) 5 1/2" x 3 1/2"
Also Needed: 45" x 65" backing, 45" x 65" batting, threads to match, scissors, straight pins, rotary cutter, acrylic ruler, and mat.		
* See Round #4 for cutting amounts for this round from total yardage.		

Disclaimers

This pattern is provided as a courtesy to quilt stores, catalogs, and quilters. Michael Miller Fabrics, LLC is not responsible for the accuracy of any kits packaged to accompany this pattern. Please direct any inquiries to the kit maker.

Yardage requirements for this pattern may allow for excess yardage to accommodate specific placement of motifs or to allow for any fussy-cutting to achieve the finished quilt design.

While every attempt has been made to give accurate measurements, yardage requirements, and construction directions; this does not allow personal variations in measuring, cutting, and or sewing. The enclosed directions were used in the construction of the original quilt.

Note: This quilt looks complicated to construct. It's actually simple. Work from the center out. As each side is pieced, attach it to the quilt before making the next side panel to prevent confusion. Cut only the pieces for each side as they are made. Each round uses the same fabrics in different colors. There are four color combinations: Center and Round #1, Round #2, Round #3, and Round #4.

Directions:

Center

1. For center strip – sew one 1-F 3 ½" piece to the end of one 1-D 6 ½" piece. Add one 1-B 3 ½" piece, one 1-E 2 ½" piece, one 1-C 7 ½" piece, one 1-A 1 ½" piece and end with one 1-D 2 ½" piece to make one 4 ½" x 24 ½" strip.

Round #1

2. For the left side – sew one 1-B 4 ½" square to one 1-A 1 ½" piece, add a 1-D 11 ½" piece, 1-E 1 ½" piece, one 1-B 1 ½" piece, one 1-F 1 ½" piece, and end with one 1-B 5 ½" piece. Sew 4 ½" x 24 ½" strip to the left side of the center strip.
3. For the right side – sew one 1-C 2 ½" piece to the top of one 1-E 2 ½" piece. Add one 1-D 11 ½" piece followed by one 1-F 3 ½" piece. Next add one 1-B 6 ½" piece. Sew the 4 ½" x 24 ½" strip to the right side of the center strip.
4. For the top strip – Sew one 1-C 4 ½" square to the left side of one 1-A 1 ½" piece. Add a 1-B 7 ½" piece to the other side of 1-A. Sew the 4 ½" x 12 ½" piece to the top of the center panel.
Step 5: For the bottom strip – Sew one 1-A 1 ½" strip to the left side of one 1-C 7 ½" piece. Sew one 1-D 4 ½" square to the other side of 1-A. Sew one 4 ½" x 12 ½" strip to the bottom.
5. For the bottom strip – Sew one 1-A 1 ½" strip to the left side of one 1-C 7 ½" piece. Sew one 1-D 4 ½" square to the other side of 1-A. Sew one 4 ½" x 12 ½" strip to the bottom.

Round #2

6. For the left side – Sew in order from the top one 2-D 5 ½" piece, one 2-F 1 ½" piece, one 2-C 4 ½" square, one 2-E 1 ½" piece, one 2-B 5 ½" piece, one 2-A 1 ½" piece, one 2-D 11 ½" piece, one 2-E 2 ½" piece and end with one 2-B 2 ½" piece. Sew 4 ½" x 32 ½" strip to the left side of the quilt.

For the right side – Sew in order from the top – 2-C 1 ½" piece, 2-A 1 ½" piece, 2-B 8 ½" piece, 2-E 2

7. $\frac{1}{2}$ " piece, 2-C $15\frac{1}{2}$ " piece, 2-F $3\frac{1}{2}$ " piece, and 2-B $8\frac{1}{2}$ " piece. Sew to the right side.

For the top – Sew in order from the left to the right – 2-C $6\frac{1}{2}$ " piece, 2-E $1\frac{1}{2}$ " piece, 2-B $3\frac{1}{2}$ " piece,

8. 2-F $1\frac{1}{2}$ " piece and 2-D $9\frac{1}{2}$ " piece. Sew $4\frac{1}{2}$ " x $20\frac{1}{2}$ " piece to the top.

For the bottom – Sew in order from left to right – 2-D $9\frac{1}{2}$ " piece, 2-E $3\frac{1}{2}$ " piece, 2-F $1\frac{1}{2}$ " piece, 2-A

9. $1\frac{1}{2}$ " piece and 2-D $6\frac{1}{2}$ " piece. Sew $4\frac{1}{2}$ " x $20\frac{1}{2}$ " piece to the bottom of the quilt.

Round #3

10. For the left side - Sew in order from the top - 3-B $7\frac{1}{2}$ " piece, 3-A $1\frac{1}{2}$ " piece, 3-D $3\frac{1}{2}$ " piece, 3-F $2\frac{1}{2}$ " piece, 3-C $13\frac{1}{2}$ " piece, 3-E $3\frac{1}{2}$ " piece and 3-B $11\frac{1}{2}$ " piece. Sew $5\frac{1}{2}$ " x $40\frac{1}{2}$ " piece to the left side.
11. For the right side - from the top - 3-D $13\frac{1}{2}$ " piece, 3-A $1\frac{1}{2}$ " piece, 3-E $2\frac{1}{2}$ " piece, 3-A $1\frac{1}{2}$ " piece, 3-B $13\frac{1}{2}$ " piece, 3-F $2\frac{1}{2}$ " piece, and 3-C $8\frac{1}{2}$ " piece. Sew the $5\frac{1}{2}$ " x $40\frac{1}{2}$ " piece to the right side.
12. For the top - from the left sew one 3-D $7\frac{1}{2}$ " piece, 3-F $2\frac{1}{2}$ " piece, 3-D $10\frac{1}{2}$ " piece, 3-E $1\frac{1}{2}$ " piece, 3-B $2\frac{1}{2}$ ", 3-A $1\frac{1}{2}$ " piece and end with 3-C $7\frac{1}{2}$ " piece. Sew $5\frac{1}{2}$ " x $30\frac{1}{2}$ " strip to the top of the quilt.
13. For the bottom - from the left - sew one 3-C $8\frac{1}{2}$ " piece, 3-F $3\frac{1}{2}$ " piece, 3-B $6\frac{1}{2}$ " piece, 3-E $2\frac{1}{2}$ " piece, 3-C $3\frac{1}{2}$ " piece, 3-A $1\frac{1}{2}$ " piece and 3-D $7\frac{1}{2}$ " piece. Sew $5\frac{1}{2}$ " x $30\frac{1}{2}$ " strip to the bottom of the quilt.

Round #4

14. For the left side - from the top one 4-C $7\frac{1}{2}$ " piece, 4-E $3\frac{1}{2}$ " piece, 4-B $17\frac{1}{2}$ " piece, 4-A $2\frac{1}{2}$ " piece, 4-D $11\frac{1}{2}$ " piece, 4-F $1\frac{1}{2}$ " 4-C $2\frac{1}{2}$ " piece, 4-A $1\frac{1}{2}$ " piece, and 4-D $6\frac{1}{2}$ " piece. Sew $5\frac{1}{2}$ " x $50\frac{1}{2}$ " strip to the left side of the quilt.
15. For the right side - from the top - 4-C $7\frac{1}{2}$ " piece, 4-E $1\frac{1}{2}$ " piece, 4-B $5\frac{1}{2}$ " square, 4-F $2\frac{1}{2}$ " piece, 4-C $12\frac{1}{2}$ " piece, 4-A $3\frac{1}{2}$ " piece, 4-D $11\frac{1}{2}$ " piece, 4-F $1\frac{1}{2}$ " piece, 4-C $3\frac{1}{2}$ " piece, 4-A $1\frac{1}{2}$ " piece and 4-B $4\frac{1}{2}$ " piece. Sew $5\frac{1}{2}$ " x $50\frac{1}{2}$ " piece to the right side of the quilt.
16. For the top from the left - one 4-B $7\frac{1}{2}$ " piece, one 4-E $1\frac{1}{2}$ ", 4-C $10\frac{1}{2}$ " piece, 4-A $2\frac{1}{2}$ " piece, 4-B $8\frac{1}{2}$ " piece, 4-F $3\frac{1}{2}$ " piece, 4-D $9\frac{1}{2}$ " piece. Sew $5\frac{1}{2}$ " x $40\frac{1}{2}$ " piece to the top of the quilt.
17. For the bottom from the left sew one 4-B $6\frac{1}{2}$ " piece, one 4-F $2\frac{1}{2}$ " piece, 4-D $9\frac{1}{2}$ " piece, 4-F $1\frac{1}{2}$ " piece, 4-D $2\frac{1}{2}$ " piece, 4-F $1\frac{1}{2}$ " piece, 4-B $11\frac{1}{2}$ " piece, 4-A $2\frac{1}{2}$ " piece, and 4-D $6\frac{1}{2}$ " piece. Sew $5\frac{1}{2}$ " x $40\frac{1}{2}$ " strip to the bottom of the quilt.
18. Layer backing, batting, and quilt top. Baste.
19. Quilt as desired.
20. Bind quilt using CX5514 (4-D) $2\frac{1}{2}$ " strips pieced as needed for length.