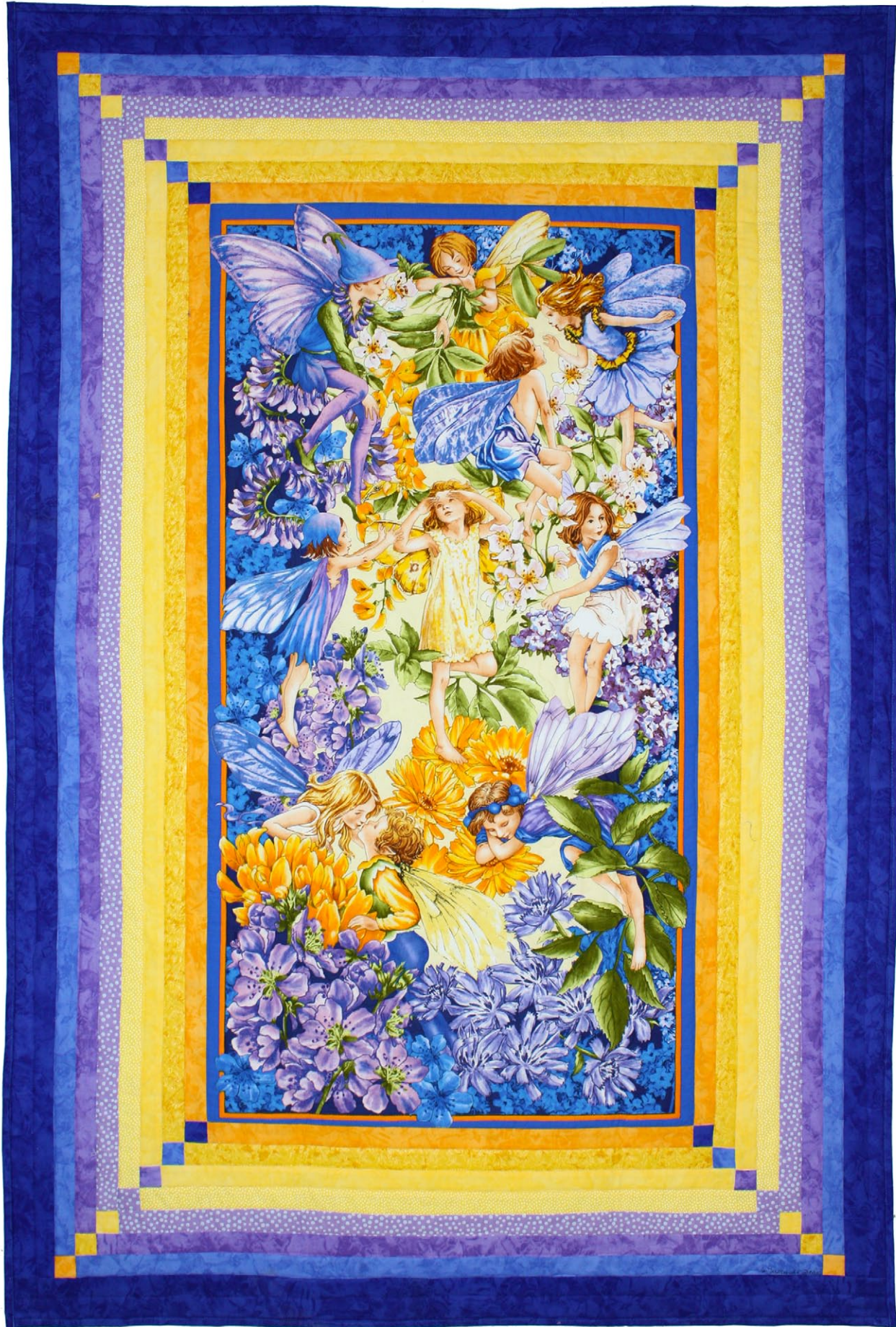


# *From Dawn til Dusk Flower Fairy*



Level: Confident Beginner | Size: 40" W x 60" H | Quilt Designed by Marinda Stewart



# FABRIC REQUIREMENTS

45" x 65" backing and 45" x 65" batting



**DC6437 Nite**  
From Dawn till Dusk  
2/3 yard



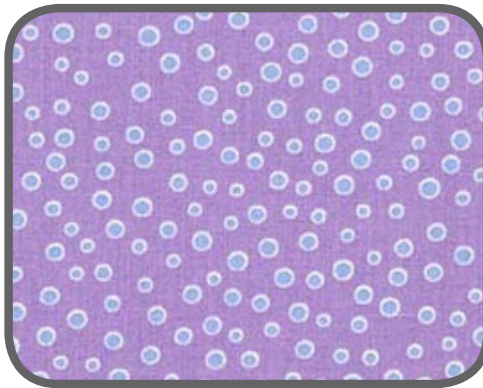
**K1265 Krystal**  
Dark Royal Blue  
3/4 yard



**K1161 Krystal**  
Medium Blue  
1/4 yard



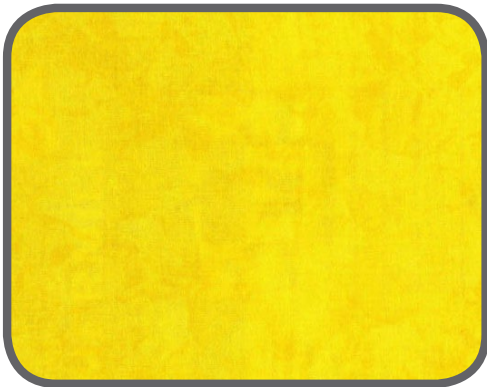
**K1173 Krystal**  
Lavender  
1/4 yard



**DC6186 Lilac**  
Freckled  
1/4 yard



**CX1065 Sunny**  
Garden Pindot  
1/4 yard



**K1127 Krystal**  
Bright Yellow  
1/4 yard



**CM0376 Sunshine**  
Fairy Frost  
1/4 yard



**K1122 Krystal**  
Marigold  
1/4 yard

## "From Dawn till Dusk Flower Fairy"

Quilt by Marinda Stewart

Size: Approximately 40" x 60" Skill Level : Beginner

### Materials

Fabric	Yardage	Cutting
DC6437 Nite From Dawn till Dusk	2/3 yard*	(1) 22 1/2" W x 42 1/2" panel
K1265 Krystal Dark Royal Blue	3/4 yard	(5) 2 1/2" x W.O.F. - binding (2) 2 1/2" x 40 1/2" (2) 2 1/2" x 56 1/2" ** (4) 1 1/2" squares
K1161 Krystal Medium Blue	1/4 yard	(2) 1 1/2" x 34 1/2" (2) 1 1/2" x 54 1/2" ** (4) 1 1/2" squares
K1173 Krystal Lavender	1/4 yard	(2) 1 1/2" x 32 1/2" (2) 1 1/2" x 52 1/2" ** (4) 1 1/2" squares
DC6186 Lilac Freckled	1/4 yard	(2) 1 1/2" x 30 1/2" (2) 1 1/2" x 50 1/2" ** (4) 1 1/2" squares
CX1065 Sunny Garden Pindot	1/4 yard	(2) 1 1/2" x 28 1/2" (2) 1 1/2" x 48 1/2" **
K1127 Krystal Bright Yellow	1/4 yard	(2) 1 1/2" x 26 1/2" (2) 1 1/2" x 46 1/2" ** (4) 1 1/2" squares
CM0376 Sunshine Fairy Frost	1/4 yard	(2) 1 1/2" x 24 1/2" (2) 1 1/2" x 44 1/2" ** (4) 1 1/2" squares
K1122 Krystal Marigold	1/4 yard	(2) 1 1/2" x 22 1/2" (2) 1 1/2" x 42 1/2" (4) 1 1/2" squares

**Also Needed:**

Also Needed: 45" x 65" backing, 45" x 65" batting, threads to match, scissors, straight pins, rotary cutter, acrylic ruler, fusible web, and mat.

-----  
\* Or amount needed to get one complete panel

\*\* Pieced for length

## Disclaimers

This pattern is provided as a courtesy to quilt stores, catalogs, and quilters. Michael Miller Fabrics, LLC is not responsible for the accuracy of any kits packaged to accompany this pattern. Please direct any inquiries to the kit maker.

Yardage requirements for this pattern may allow for excess yardage to accommodate specific placement of motifs or to allow for any fussy-cutting to achieve the finished quilt design.

While every attempt has been made to give accurate measurements, yardage requirements, and construction directions; this does not allow personal variations in measuring, cutting, and or sewing. The enclosed directions were used in the construction of the original quilt.

## Directions:

1. Sew one K1122 1 1/2" x 42 1/2" piece to each side of DC6437. Sew one K1265 1 1/2" square to each end of one K1122 1 1/2" x 22 1/2" piece. Make (2). Sew one strip to the top and bottom of the panel.
2. Sew one CM0376 1 1/2" x 44 1/2" piece to each side of the quilt. Sew one K1161 1 1/2" square to each end of one CM0376 1 1/2" x 24 1/2" piece. Make (2). Sew one strip to the top and bottom of the quilt.
3. Sew one K1127 1 1/2" x 46 1/2" piece to each side of the quilt. Sew one K1173 1 1/2" square to each end of one K1127 1 1/2" x 26 1/2" piece. Make (2) Sew one strip to the top and bottom of the quilt.
4. Sew one CX1065 1 1/2" x 48 1/2" piece to each side of the quilt. Sew one DC6186 1 1/2" square to each end of one CX1065 1 1/2" x 28 1/2" piece. Make (2). Sew one strip to the top and bottom of the quilt.
5. Sew one DC6186 1 1/2" x 50 1/2" piece to each side of the quilt. Sew one K1127 1 1/2" square to each end of one DC6186 1 1/2" x 30 1/2" piece. Make (2). Sew one strip to the top and bottom of the quilt.
6. Sew one K1173 1 1/2" x 52 1/2" piece to each side of the quilt. Sew one CM0376 1 1/2" square to each end of one K1173 1 1/2" x 32 1/2" piece. Make (2). Sew one strip to the top and bottom of the quilt.
7. Sew one K1161 1 1/2" x 54 1/2" piece to each side of the quilt. Sew one K1122 1 1/2" square to each end of one K1161 1 1/2" x 34 1/2" piece. Make (2). Sew one strip to the top and bottom of the quilt.
8. Sew one K1265 2 1/2" x 56 1/2" piece to each side of the quilt. Sew one 2 1/2" x 40 1/2" to the top and bottom of the quilt.
9. Layer backing, batting, and quilt top. Baste.
10. Quilt as desired.
11. Bind quilt using K1265 2 1/2" strips pieced as needed.