

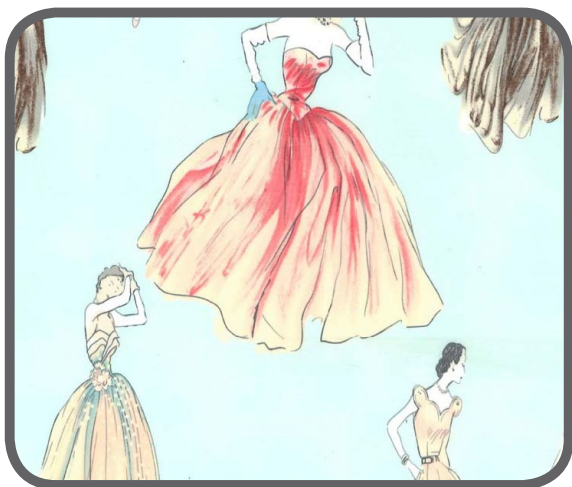
Couture





FABRIC REQUIREMENTS

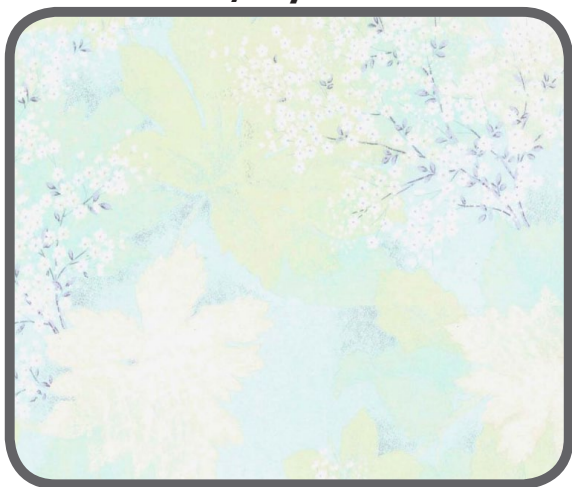
45" x 55" backing and 45" x 55" batting



**PC1531 Seafoam
Couture
1 1/2 yards**



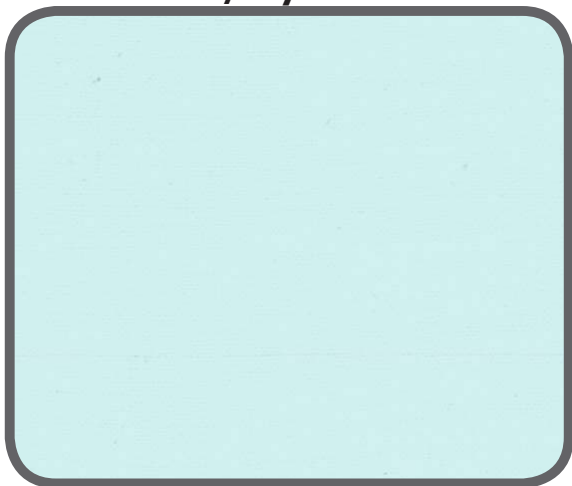
**CX4595 Gray
Zelda
1/2 yard**



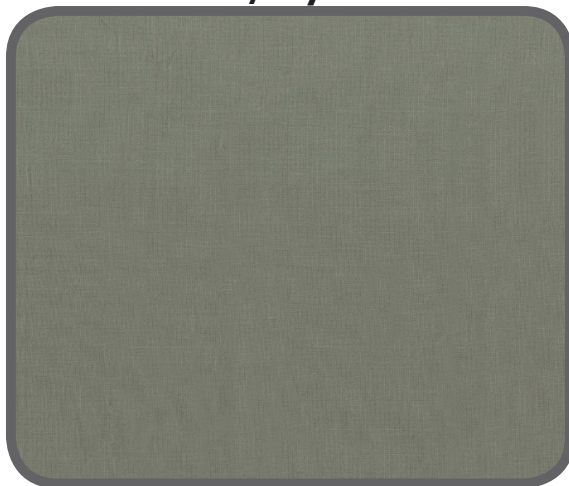
**CJ5749 Mist
Bokashi Blossoms
1/2 yard**



**CX6322 Spa
Dim Dots
1/4 yard**



**SC5333 Spa
Cotton Couture
3/8 yard**



**SC5333 Stone
Cotton Couture
3/8 yard**

"Couture"

Quilt designed by Marinda Stewart - Skill Level: Confident Beginner
Size: 40" x 50"

Materials

Fabric	Yardage	Cutting
PC1531 Seafoam Couture	1 1/2 yards *	(2) 5 1/2" H x 40 1/2" W (2) 5 1/2" W x 40 1/2" H (1) 20 1/2" W x 30 1/2" H
CX4595 Gray Zelda	1/2 yard	(2) 2 1/2" x 20 1/2" (2) 2 1/2" x 30 1/2" (2) 1 3/4" x 40 1/2" (2) 1 3/4" x 30 1/2" (assorted applique motifs - see directons)
CJ5749 Mist Bokashi Blossoms	1/2 yard	(2) 4 1/2" x 20 1/2" (2) 4 1/2" x 38 1/2"
CX6322 Spa Dim Dots	1/4 yard	(2) 1 1/2" x 28 1/2" (2) 1 1/2" x 40 1/2"
SC5333 Spa Cotton Couture	3/8 yard	(5) 2 1/2" x W.O.F. - binding
SC5333 Stone Cotton Couture	3/8 yard	(1) Silhouette (see pattern)
Also Needed: 45" x 55" backing, 45" x 55" batting, threads to match, scissors, pinking scissors, straight pins, rotary cutter, acrylic ruler, mat, fusible web, 2 2/3 yards 1 1/2" wide black sheer ribbon, and 6" piece of 1/8" black satin ribbon. OPTIONAL: (but recommended) iron-on tear-away stabilizer, water soluble fabric pen.		
* One way print. Cut pieces with motif upright.		

Disclaimers

This pattern is provided as a courtesy to quilt stores, catalogs, and quilters. Michael Miller Fabrics, LLC is not responsible for the accuracy of any kits packaged to accompany this pattern. Please direct any inquiries to the kit maker.

Yardage requirements for this pattern may allow for excess yardage to accommodate specific placement of motifs or to allow for any fussy-cutting to achieve the finished quilt design.

While every attempt has been made to give accurate measurements, yardage requirements, and construction directions; this does not allow personal variations in measuring, cutting, and or sewing. The enclosed directions were used in the construction of the original quilt.

Directions

1. Join pattern pieces as shown. Enlarge pattern 150%. Trace pattern onto the paper side of the fusible web. Rough cut out. Iron pattern onto the wrong side of SC5333 Stone. Cut out on pattern lines. Remove paper backing. Center motif on the PC1531 20 1/2" W x 30 1/2" piece. Iron in place. OPTIONAL: Iron iron-on tear-away stabilizer on the wrong side of the rectangle before stitching. Machine satin stitch all raw edges to finish. Remove all traces of stabilizer after stitching. (Note: stabilizer improves stitch quality and prevents stitch distortion).
2. To create the scallop edge for the CX4595 fabric, use the guide for the scallop on pattern pages. Mark (10) 2" scallops on the wrong side of each CX4595 2 1/2" x 20 1/2" pieces. Leave 1/4" seam allowance at each end. Cut out the scallop edges with the pinking scissors. Place right sides together on the top and bottom of the PC 1531 20 1/2" x 30 1/2" piece. Place one CJ 5749 4 1/2" x 20 1/2" piece on top of the CX4595 pieces. Sew to the top and bottom of the quilt. Press the scallop edge over the CJ5749 fabric.
3. Repeat step #2 for each side. Mark (15) 2" scallops on each CX4595 2 1/2" x 30 1/2" piece. Press under the 1/4" seam allowance at each end. Sew in place with CJ5749 4 1/2" x 38 1/2" pieces. Press scallop edge over CJ5749 .
4. Pin the scallops in place on top of CJ5749. Topstitch all the pinked edges 1/8" from the raw edge on all four sides. Top stitch the folded under seam allowance on each end of each side piece to secure. OPTIONAL (but recommended). Use iron-on tear-away stabilizer under the border fabric before stitching the scallop edges. It makes the stitching easier and the rounded edges don't stretch. Remove stabilizer after stitching.
5. Sew one CX6322 1 1/2" x 28 1/2" piece to the top and bottom. Sew one CX6322 1 1/2" x 40 1/2" piece to each side.
6. Repeat step #2 for the outer CX4595 scallop edge. Mark (15) scallops on each CX4595 1 3/4" x 30 1/2" piece for the top and bottom. Mark (20) scallops on each CX4595 1 3/4" x 40 1/2" piece for each side. Cut out each using pinking scissors.
7. Sew the CX4595 1 3/4" x 40 1/2" piece with the PC1531 5 1/2" W x 40 1/2" H pieces to each side. Keep motifs upright. Sew the CX4595 1 3/4" x 30 1/2" piece (with 1/4" seam pressed under at each end) to the top and bottom with the PC1531 5 1/2" H x 40 1/2" W piece on top as shown. Press scallops over the border fabric. Topstitch in place as in Step #4.
8. With the remaining CX4595 iron fusible web on the wrong side of CX4595. Cut out (8) large flowers. Place one flower in each corner of the two CX4595 borders as shown. Topstitch in place. Cut out many small motifs - buds, leaves, etc. Scatter them on the silhouette as shown or as desired. NOTE: the sleeves, hem, and neckline were outlined. Motifs were scattered on the dress and in the hair. Topstitch in place secure.
9. Cut 6" piece of ribbon in half. Turn under raw edge. Stitch in place at each side of the waist of the dress. Tie into a knot. Trim away any excess as shown.
10. Layer backing, batting, and quilt top. Baste.
11. Quilt as desired.
12. Bind quilt using SC5333 Spa 2 1/2" strips pieced as needed for length.
13. Divide 1 1/2" wide black sheer ribbon into (4) equal pieces (24" each). Fold ribbon in half. Topstitch one piece in each corner of the inside CX4595 border as shown. Tie each piece into a bow. "V" cut the ends of each ribbon to finish.

"Couture"

PATTERN
(Bottom)

pg 1 of 2

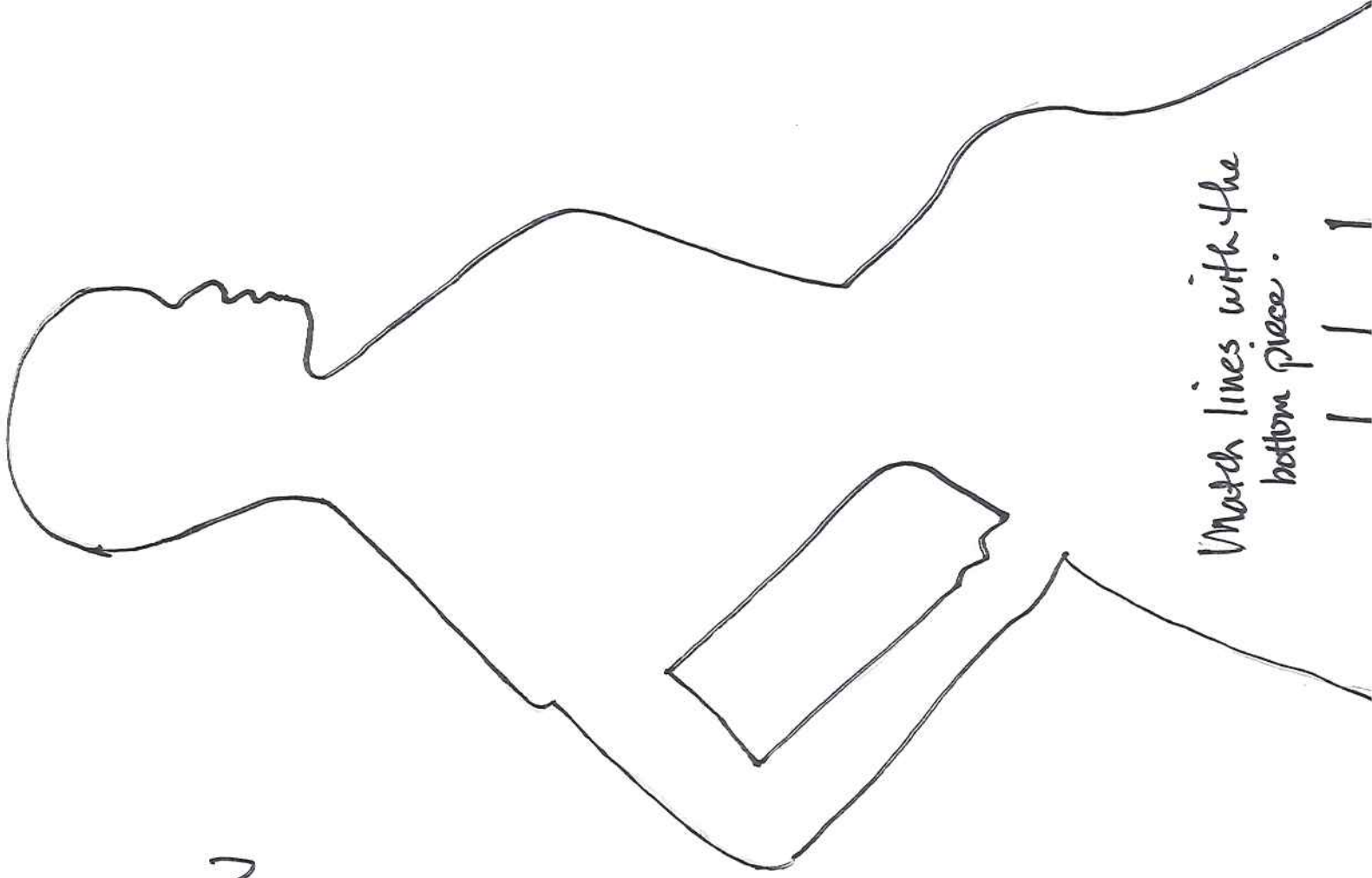


*Marinda © 2014

"Couture"

PATTERN

(Top)



Match lines with the
bottom piece.

