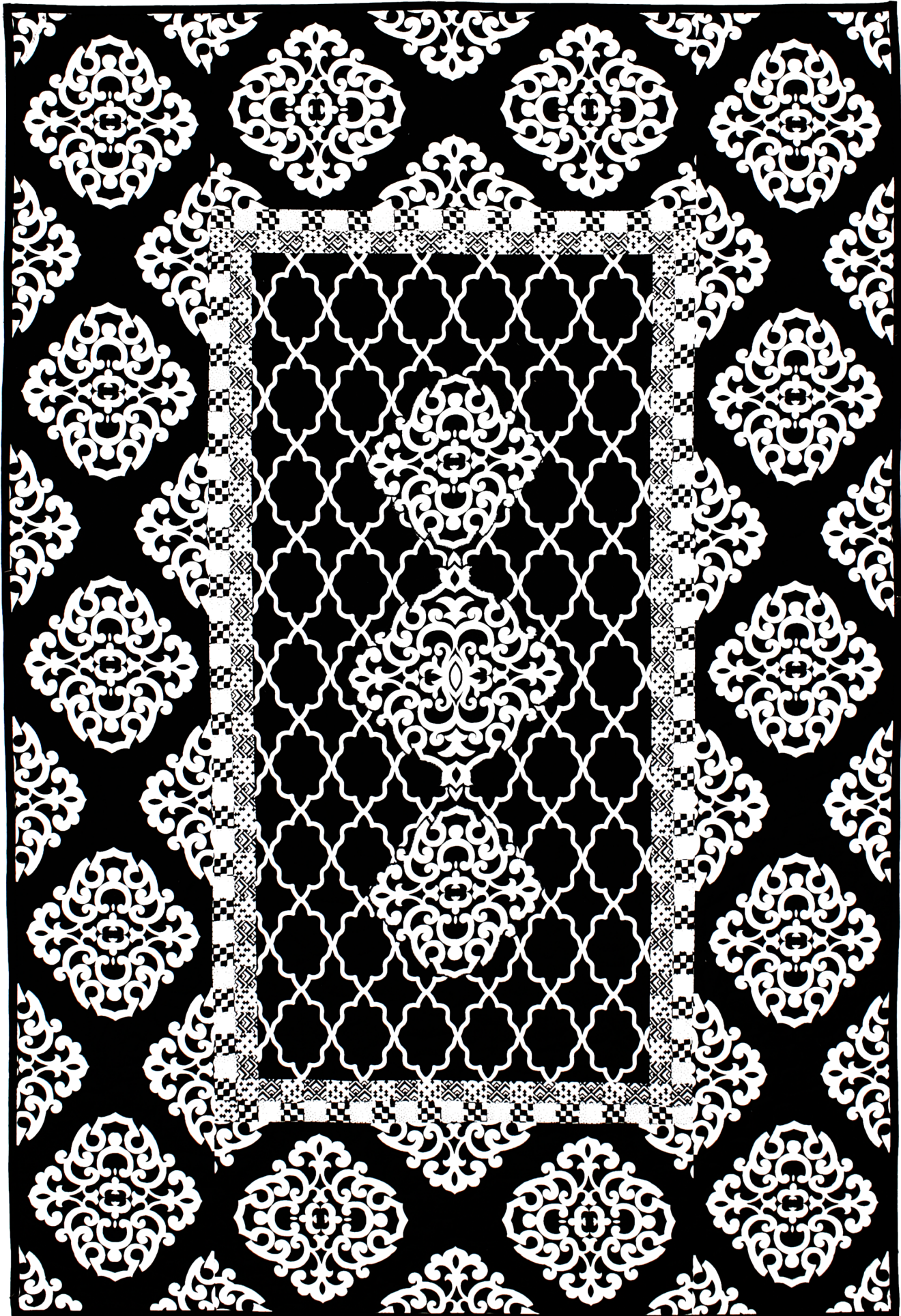


SULTANA

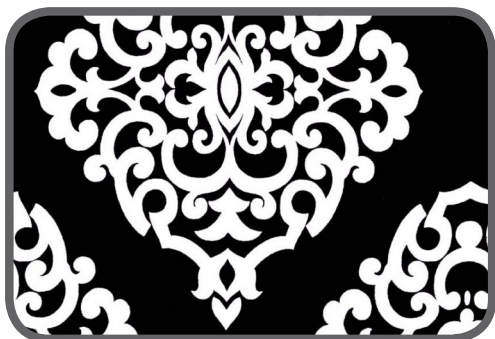
Date: Jan.31.14



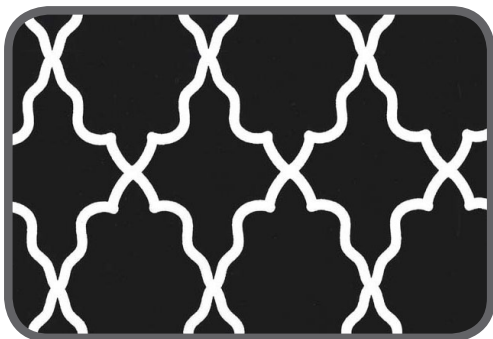
Quilt Designed by Marinda Stewart. Size 40" x 60". Skill level: Confident Beginner



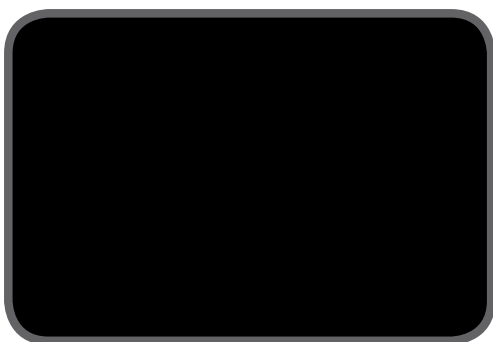
FABRIC REQUIREMENTS



**PC5542 Black
Sultana**
2 yards



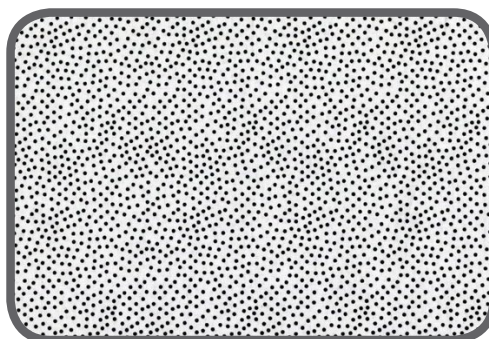
**DC5702 Black
Moroccan Lattice**
1 1/8 yards



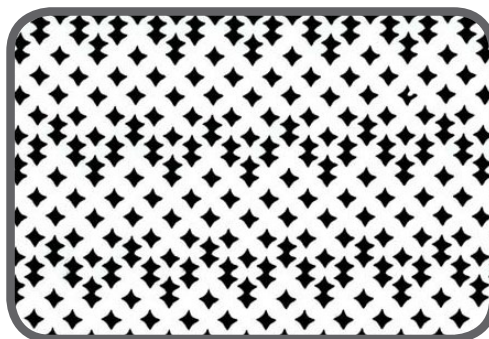
Jet Black
3/8 yard



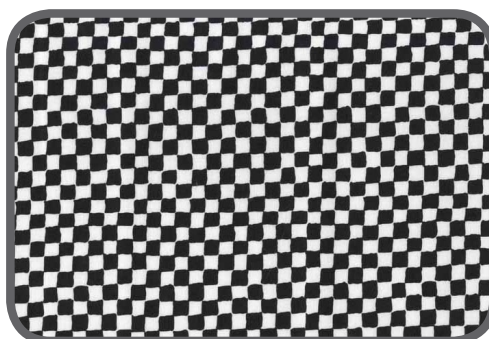
**CX6327 Black
Deco Geo**
1/6 yard



**CX1065 Dalmatian
Garden Pindot**
1/6 yard



**DC6210 Black
North Star**
1/6 yard



**CX0482 White
Clown Check**
1/6 yard

"Sultana"

Quilt Designed by Marinda Stewart

Size: 40" x 60" - Skill Level: Confident Beginner

Materials

Fabric	Yardage	Cutting
PC5542 Black Sultana	2 yards	(2) 9 ½" W x 60 ½" H * (2) 9 ½" H x 22 ½" W * (3) medallions
DC5702 Black Moroccan Lattice	1 1/8 yards	(1) 18 ½" W x 38 ½" H *
Jet Black	3/8 yard	(5) 2 ½" x W.O.F. – binding
CX6327 Black Deco Geo	1/6 yard	(3) 1 ½" x W.O.F.
CX1065 Dalmatian Garden Pindot	1/6 yard	(3) 1 ½" x W.O.F.
DC6210 Black North Star	1/6 yard	(3) 1 ½" x W.O.F.
CX0482 White Clown Check	1/6 yard	(3) 1 ½" x W.O.F.
ALSO NEEDED: 45" X 65" backing, 45" x 65" batting, threads to match, scissors, straight pins, rotary cutter, acrylic ruler, mat, and fusible web.		
* Cut vertically. Center on motif as shown.		

Disclaimers

This pattern is provided as a courtesy to quilt stores, catalogs, and quilters. Michael Miller Fabrics, LLC is not responsible for the accuracy of any kits packaged to accompany this pattern. Please direct any inquiries to the kit maker.

Yardage requirements for this pattern may allow for excess yardage to accommodate specific placement of motifs or to allow for any fussy-cutting to achieve the finished quilt design.

While every attempt has been made to give accurate measurements, yardage requirements, and construction directions; this does not allow personal variations in measuring, cutting, and or sewing. The enclosed directions were used in the construction of the original quilt.

Directions:

1. From PC5542 scraps cut out (2) small medallions and one large. Following manufacturer's directions, iron fusible web on the wrong side of each. Cut out on motif lines. Remove paper backing. Iron large motif in the center of the DC5702 18 ½" x 38 ½" rectangle. Iron one small medallion on each end of the center medallion as shown. Machine applique all raw edges to finish. Set aside.
2. For the checkerboard border. Sew one CX6327 1 ½" x W.O.F. strip to one CX1065 1 ½" x W.O.F. strip. Make (3). Repeat using DC6210 1 ½" x W.O.F. strips and CX0482 1 ½" x W.O.F. strips. Cut across the pieced strips every 1 ½" to make (58) pieces of each combo. Sew one strip of each combo together into a 2 ½" x 2 ½" checkerboard 4 patch. Make (58) total. Sew together (18) 4- patch units into a strip. Make (2). Sew one strip to each side of the DC5702 rectangle. Sew together (11) 4-patch units into a strip. Make (2). Sew one strip to the top and bottom of the rectangle maintaining the checkerboard pattern.
3. Sew one PC5542 9 ½" H x 22 ½" W piece to the top and bottom of the quilt. Sew one PC5542 9 ½" W x 60 ½" H piece to each side of the quilt.
4. Layer backing, batting, and quilt top. Baste.
5. Quilt as desired.
6. Bind quilt using Jet Black 2 ½" strips pieced as needed for length.