

Golden Angel Redux

Date: Dec.17.13



Level: Beginner | Size: 40" W x 60" H | Quilt Designed by Marinda Stewart



FABRIC REQUIREMENTS

backing and batting: 45" W x 65" H



CX4648 Gold

Golden Angel
2/3 yard or 1 Panel



CM0376 Garland

Fairy Frost
1/2 yard



K2247 Krystal

(Dark Red)
1/2 yard



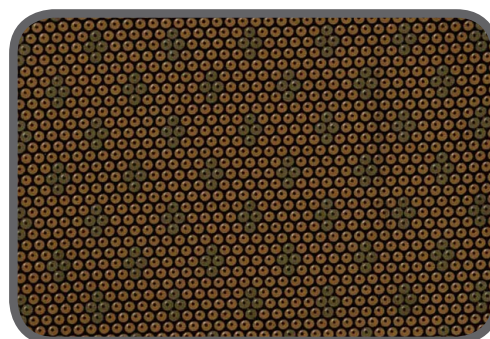
K1156 Krystal

(Leaf Green)
1/4 yard



CX4653 Black

Divine Crosses
1 5/8 yards



DC5786 Maize

Diamondback
3/8 yard

“Golden Angel Redux”
Quilt by Marinda Stewart

Size: Approximately 40" W x 60" H Skill Level: Beginner

Materials

Fabric	Yardage	Cutting
CX4648 Gold Golden Angel	2/3 yard or 1 Panel	(1) 23 1/2" W x 43 1/4" H
CX4653 Black Divine Crosses	1 5/8 yards *	(2) 4 1/2" W x 46 1/4" H (cut vertically) (2) 4 1/2" H x 34 1/4" W (cut horizontally)
CM0376 Garland Fairy Frost	1/2 yard	(2) 1 1/2" x 44 1/4" (2) 1 1/2" x 26 1/2" (2) 1 1/2" x 54 1/4" ** (2) 1 1/2" x 36 1/2"
K2247 Krystal (Dark Red)	1/2 yard	(2) 1" x 43 1/4" (2) 1" x 24 1/2" (5) 2 1/2" x W.O.F. – binding
DC5786 Maize Diamondback	3/8 yard	(2) 2" x 40 1/2" (2) 2" x 57 1/4" **
K1156 Krystal (Leaf Green)	1/4 yard	(2) 1" x 56 1/4" ** (2) 1" x 37 1/2"
Also needed: 45" x 65" Backing, 45" x 65" Batting, thread to match, scissors, straight pins, rotary cutter, acrylic ruler, and mat. Optional: Metallic gold thread for quilting wings and halo.		
* One-way print. Keep motifs upright. ** Pieced for length.		

Disclaimers

This pattern is provided as a courtesy to quilt stores, catalogs, and quilters. Michael Miller Fabrics, LLC is not responsible for the accuracy of any kits packaged to accompany this pattern. Please direct any inquiries to the kit maker.

Yardage requirements for this pattern may allow for excess yardage to accommodate specific placement of motifs or to allow for any fussy-cutting to achieve the finished quilt design.

While every attempt has been made to give accurate measurements, yardage requirements, and construction directions; this does not allow personal variations in measuring, cutting, and or sewing. The enclosed directions were used in the construction of the original quilt.

Directions

1. Sew one K2247 1" x 43 1/4" piece to each side of panel. Sew one K2247 1" x 24 1/2" piece to the top and bottom.
2. Sew one CM0376 1 1/2" x 44 1/2" piece to each side of the panel. Sew one CM0376 1 1/2" x 26 1/2" piece to the top and bottom.
3. Sew one CX4653 4 1/2" W x 46 1/4" H piece to each side of the panel. Sew one CX4653 4 1/2" H x 34 1/2" W piece to the top and bottom. Keep motifs upright on each piece as shown.
4. Sew one CM0376 1 1/2" x 54 1/4" ** piece to each side of the panel. Sew one CM0376 1 1/2" x 36 1/2" piece to the top and bottom.
5. Sew one K1156 1 1/2" x 56 1/4" ** piece to each side of the panel. Sew one K1156 1 1/2" x 37 1/2" piece to the top and bottom.
6. Sew one DC5786 2" x 57 1/4" ** piece to each side of the panel. Sew one DC576 2" x 40 1/2" piece to the top and bottom.
7. Layer backing, batting, and quilt top. Baste.
8. Quilt as desired. OPTIONAL: Use metallic gold thread to quilt wings and halo.
9. Bind quilt using K2247 2 1/2" strips pieced as needed for length.