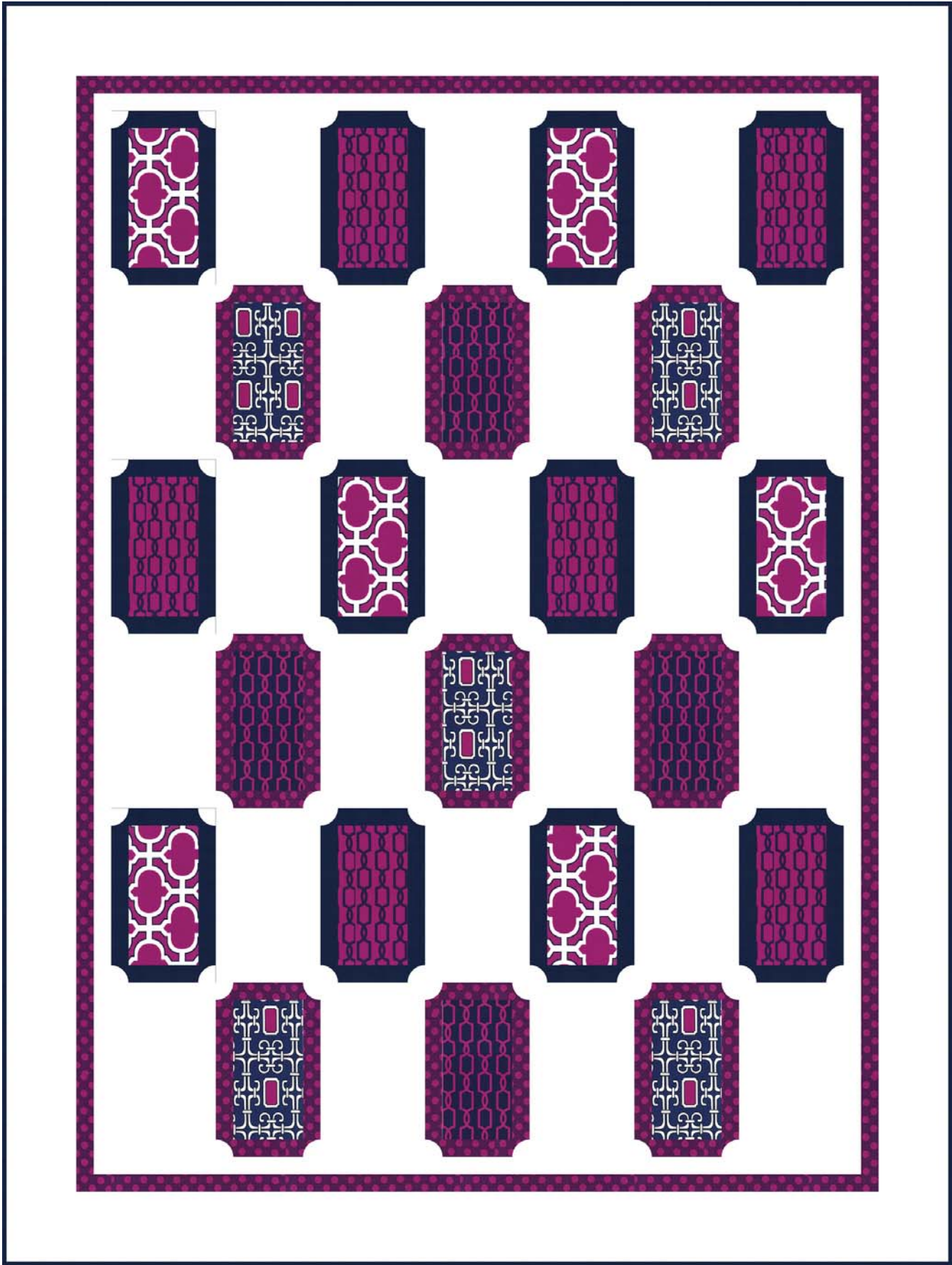


# midnite gems



Size: 54" W x 72" H | Quilt designed by Heidi Pridemore



# FABRIC REQUIREMENTS

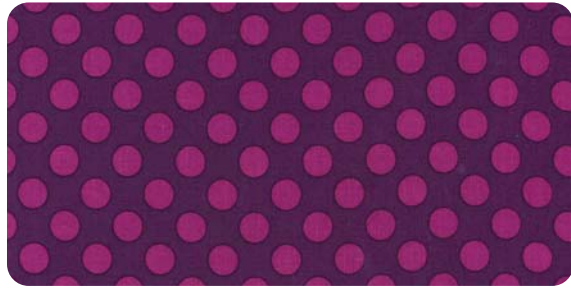
Backing & Batting: 59" x 77"



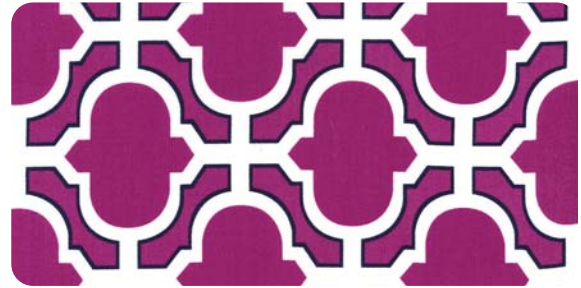
SC5333 Bright White  
Cotton Couture  
2-3/4 yards



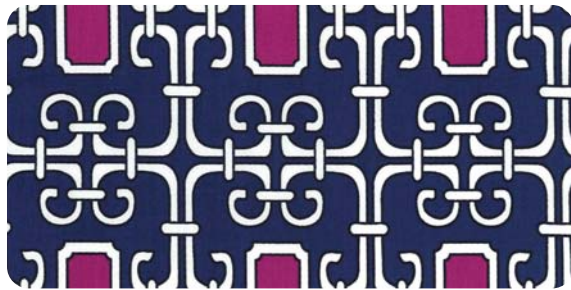
SC5333 Midnite  
Cotton Couture  
1-1/8 yards



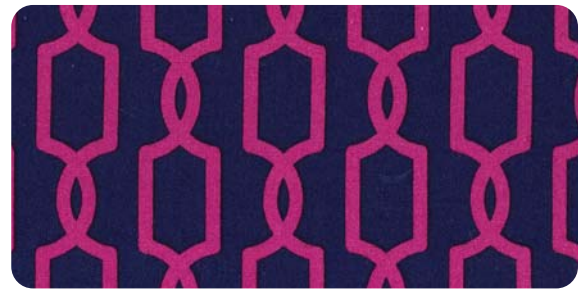
CX1492 Jewel  
Ta Dot  
7/8 yard



DC5904 Jewel  
Heather  
1/3 yard



DC5905 Jewel  
Lauren  
1/3 yard



CX6019 Passion  
Trelliage  
1/3 yard



CX6019 Jewel  
Trelliage  
1/3 yard



CX1492 Jewel (Backing)  
Ta Dot  
2-3/4 yards

## "Midnight Gems"

Quilt by Heidi Pridemore

Size: Approximately 51" x 72" Skill Level: Advanced Beginner

### Materials

#### Cutting instructions

**Please Note: All strips are cut across the width of fabric (WOF) from selvage to selvage edge.**

	Fabric	Yardage	Cutting
(A)	DC5904-Heather-Jewel Heather Jewel	1/3 yard	<ul style="list-style-type: none"> <li>• Cut one 8 1/2" x WOF strip. Sub-cut the strip into six 4 1/2" x 8 1/2" strips.</li> </ul>
(B)	CX6019-Trelliage-Jewel Trelliage Jewel	1/3 yard	<ul style="list-style-type: none"> <li>• Cut one 8 1/2" x WOF strip. Sub-cut the strip into six 4 1/2" x 8 1/2" strips.</li> </ul>
(C)	SC5333 Cotton Couture - Midnight Navy Solid	1 1/8 yard	<ul style="list-style-type: none"> <li>• Cut one 8 1/2" x WOF strip. Sub-cut the strip into twenty-four 1 1/2" x 8 1/2" strips.</li> <li>• Cut one 6 1/2" x WOF strip. Sub-cut the strip into twenty-four 1 1/2" x 6 1/2" strips.</li> <li>• Cut seven 2 1/2" x WOF strips for the binding.</li> </ul>
(D)	DC5905-Lauren-Jewel Lauren Jewel	1/3 yard	<ul style="list-style-type: none"> <li>• Cut one 8 1/2" x WOF strip. Sub-cut the strip into five 4 1/2" x 8 1/2" strips.</li> </ul>
(E)	CX6019-Trelliage-Passion Trelliage Passion	1/3 yard	<ul style="list-style-type: none"> <li>• Cut one 8 1/2" x WOF strip. Sub-cut the strip into four 4 1/2" x 8 1/2" strips.</li> </ul>
(F)	CX1492-Ta Dot-Jewel Ta Dot Jewel	7/8 yard	<ul style="list-style-type: none"> <li>• Cut one 8 1/2" x WOF strip. Sub-cut the strip into eighteen 1 1/2" x 8 1/2" strips.</li> <li>• Cut one 6 1/2" x WOF strip. Sub-cut the strip into eighteen 1 1/2" x 6 1/2" strips.</li> <li>• Cut four 1 1/2" x WOF strips. Sew the strips together, end to end, and cut two 1 1/2" x 62 1/2" strips.</li> <li>• Cut three 1 1/2" x WOF strips. Sew the strips together, end to end, and cut two 1 1/2" x 46 1/2" strips.</li> </ul>
(G)	SC5333-Bright White White	2 3/4 yard	<ul style="list-style-type: none"> <li>• Cut four 10 1/2" x WOF strips. Sub-cut the strips into twenty-one 6 1/2" x 10 1/2" strips.</li> <li>• Cut four 1 1/2" x WOF strips. Sew the strips together, end to end, and cut two 1 1/2" x 60 1/2" strips.</li> <li>• Cut three 1 1/2" x WOF strips. Sew the strips together, end to end, and cut two 1 1/2" x 44 1/2" strips.</li> <li>• Cut four 4 1/2" x WOF strips. Sew the strips together, end to end, and cut two 4 1/2" x 64 1/2" strips.</li> <li>• Cut three 4 1/2" x WOF strips. Sew the strips together, end to end, and cut two 4 1/2" x 54 1/2" strips.</li> <li>• Cut four 2" x WOF strips. Sub-cut the strips into eighty-four 2" squares.</li> </ul>
Backing	CX1492-Ta Dot-Jewel Ta Dot Jewel	3 3/4 yards	<ul style="list-style-type: none"> <li>• Cut two 62" x 42" strips. Piece the strips together and trim to make the 62" x 80" pieced backing.</li> </ul>

#### **You will also need:**

• 59" x 80" Batting, 1 yard fusible web cut into eighty-four 2" squares, threads to match, scissors, straight pins, acrylic ruler, rotary cutter and mat.

## Disclaimers

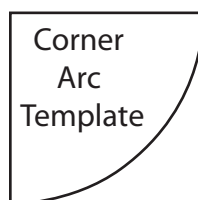
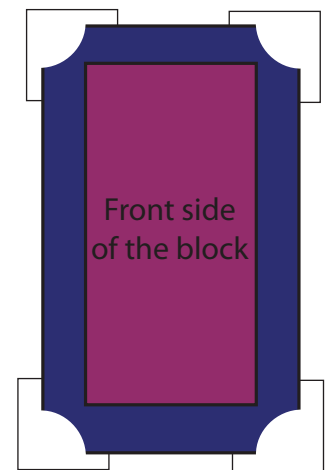
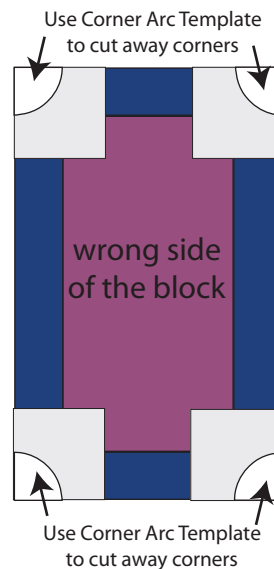
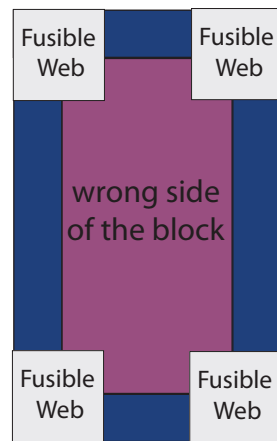
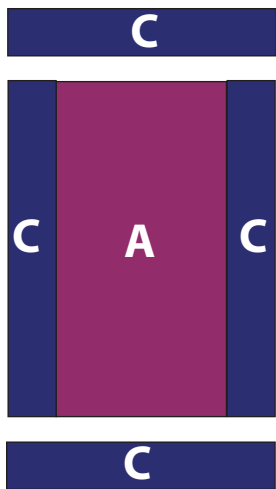
This pattern is provided as a courtesy to quilt stores, catalogs and quilters. Michael Miller Fabrics, LLC is not responsible for the accuracy of any kits packaged to accompany this pattern. Please direct any inquiries to the kit maker.

Yardage requirements for this pattern may allow for excess yardage to accommodate specific placement of motifs or to allow for any fussy-cutting to achieve the finished quilt design.

While every attempt has been made to give accurate measurements, yardage requirements and construction directions; this does not allow personal variations in measuring, cutting or sewing. The enclosed directions were used in the construction of the original quilt.

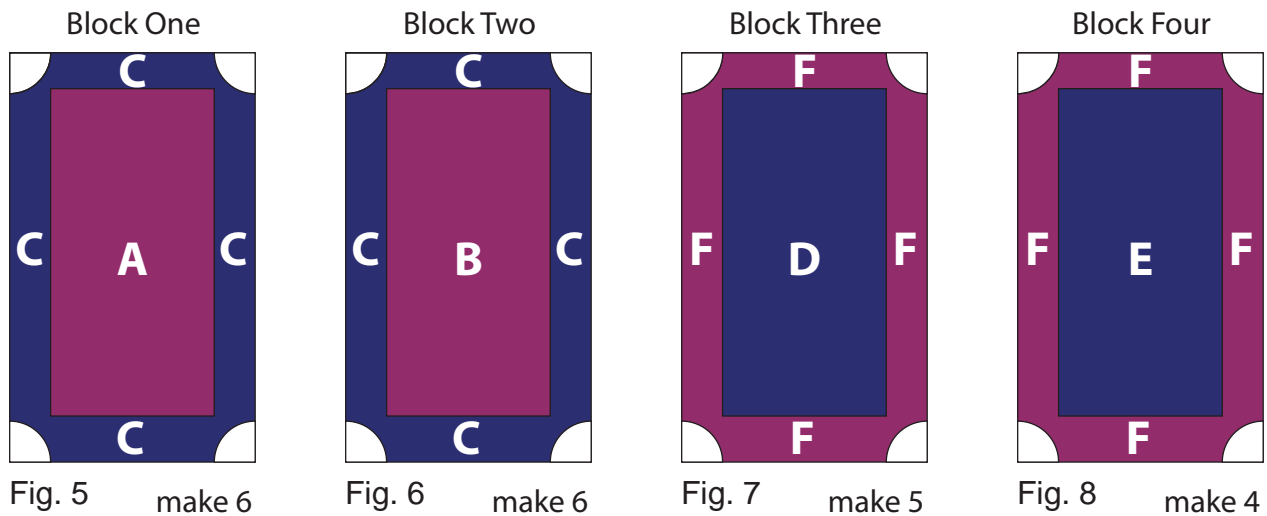
## Block Assembly

1. Sew one 1 ½" x 8 ½" Fabric C strip to each side of one 4 ½" x 8 ½" Fabric A strip. Sew one 1 ½" x 6 ½" Fabric C strip to the top and bottom of the Fabric A strip to make one Block One Rectangle (Fig. 1). Repeat to make six Block One Rectangles total.
2. Align one 2" piece of fusible web behind each corner of one Block One Rectangle and press in place (Fig. 2).
3. Using the Corner Arc template provided, cut out all four corners of one Block One Rectangle (Fig. 3).
4. Place one 2" Fabric G square on the back of the Block One Rectangle, covering each of the corners section that were just removed and aligned with the sides, tops and bottoms of the original block (Fig. 4). Press the squares in place.



Corner Arc Template

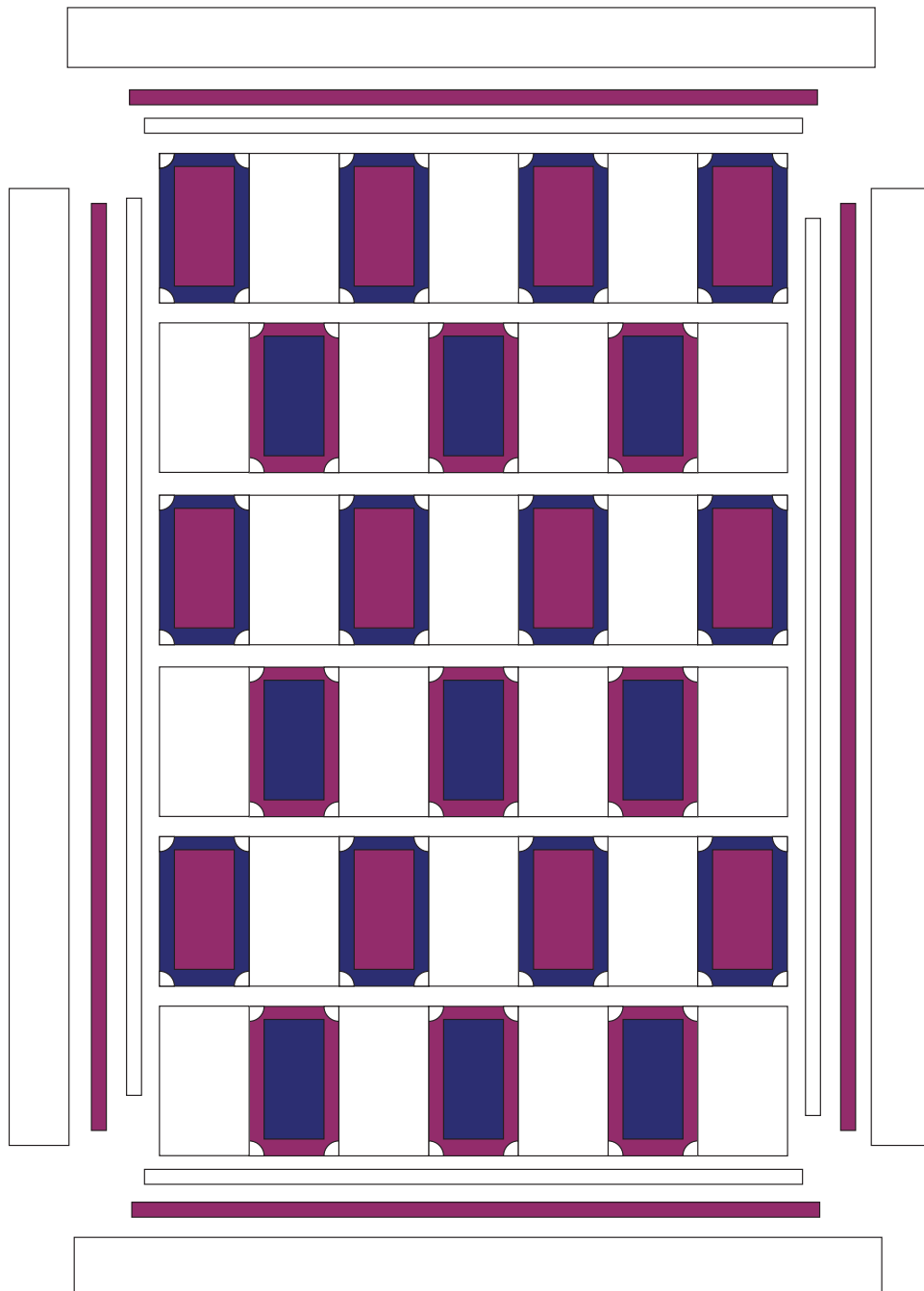
5. Sew along the arc (ONLY THE ARC) using a buttonhole or satin stitch to finish the Block One Rectangle Corners. Trim the white square even with the block sides (if needed) (Fig. 5).
6. Repeat Steps 2-5 to make six Block One Rectangles total.
7. Repeat Step 1-5 using six 4 ½" x 8 ½" Fabric B strips, twelve 1 ½" x 8 ½" Fabric C strips, twelve 1 ½" x 6 ½" Fabric C strips and twenty-four 2" Fabric G squares to make six Block Two Rectangles total (Fig. 6).
8. Repeat Steps 1-5 using five 4 ½" x 8 ½" Fabric D strips, ten 1 ½" x 8 ½" Fabric F strips, ten 1 ½" x 6 ½" Fabric F strips and twenty 2" Fabric G squares to make five Block Three Rectangles total (Fig. 7).
9. Repeat Steps 1-5 using four 4 ½" x 8 ½" Fabric E strips, eight 1 ½" x 8 ½" Fabric F strips, eight 1 ½" x 6 ½" Fabric F strips and sixteen 2" Fabric G squares to make four Block Four Rectangles total (Fig. 8).



**Quilt Top Assembly: (Refer to the quilt layout while assembling the quilt top)**

10. Sew two Block One Rectangles, two Block Two Rectangles and three 6 ½" x 10 ½" Fabric G strips together to make Row One. Repeat to make Row Five.
11. Sew four 6 ½" x 10 ½" Fabric G strips, two Block Three Rectangles and one Block Four Rectangle to make Row Two. Repeat to make Row Six.
12. Sew two Block Two Rectangles, two Block One Rectangles and three 6 ½" x 10 ½" Fabric G strips together to make Row Three.
13. Sew four 6 ½" x 10 ½" Fabric G strips, two Block Four Rectangles and one Block Three Rectangle to make Row Four.
14. Sew the six rows together in numerical order to make the quilt top.
15. Sew one 1 ½" x 60 ½" Fabric G strip to each side of the quilt top. Sew one 1 ½" x 44 ½" Fabric G strip to the top and bottom of the quilt top.

16. Sew one 1 ½" x 62 ½" Fabric F strip to each side of the quilt top. Sew one 1 ½" x 46 ½" Fabric F strip to the top and bottom of the quilt top.
17. Sew one 4 ½" x 64 ½" Fabric G strip to each side of the quilt top. Sew one 4 ½" x 54 ½" Fabric G strip to the top and bottom of the quilt top.
18. Layer and quilt as desired.
19. Sew the seven 2 ½" x 42" Fabric C strips together, end to end with 45 degree seams, to make the binding. Fold this long strip in half lengthwise with wrong sides together and press.
20. Bind as desired.



Quilt Layout