

TRIBAL BLANKET

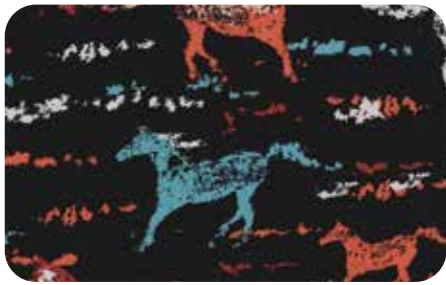


Level: Confident Beginner | Size: 40" W x 56" H | Quilt designed by Marinda Stewart



FABRIC REQUIREMENTS

Backing & Batting: 45" x 60"



CX6000 Sunset
Wild Horses
7/8 yard



CX5744 Sunset
Tribal Blanket
7/8 yard



CX3584 Apricot
Clown Stripe
1/4 yard



CX5999 Honey
Diamond Prism
1/8 yard



CX5988 Espresso
Tiny Tiles
1/6 yard



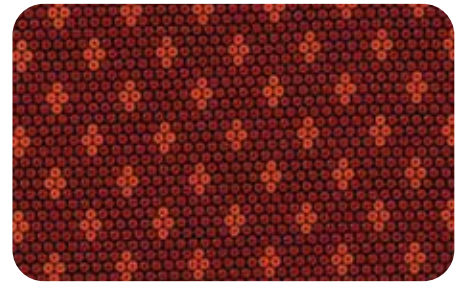
CX5988 Toffee
Tiny Tiles
1/6 yard



K2214 (Brown)
Krystal
3/8 yard



CX5744 Teal
Tribal Blanket
3/8 yard



DC5786 Flame
Diamondback
1/6 yard



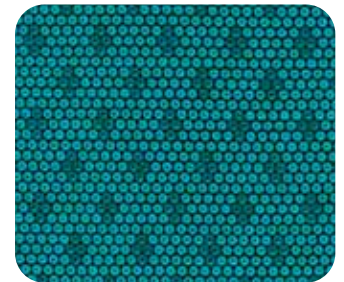
CX5999 Teal
Diamond Prism
3/8 yard



CX6048 Black
Caravan
3/8 yard



CX5999 Sunset
Diamond Prism
1/6 yard



DC5786 Turquoise
Diamondback
1/6 yard

"Tribal Blanket"
Quilt by Marinda Stewart

Size: Approximately 40" x 56" Skill Level : Confident Beginner

Materials

Fabric	Yardage	Cutting
CX6000 Sunset Wild Horses	7/8 yard	(1) 12 1/2" W x 28 1/2" H*
CX5744 Sunset Tribal Blanket	7/8 yard	(2) 6 1/2" W x 30 1/2" H* (2) 26 1/2" W x 6 1/2" H*
CX3584 Apricot Clown Stripe	1/4 yard	(2) 1 1/2" x 42 1/2" (2) 1 1/2" x 28 1/2"
CX5999 Honey Diamond Prism	1/8 yard	(2) 1 1/2" x 12 1/2" (2) 1 1/2" x 30 1/2"
CX5988 Espresso Tiny Tiles	1/6 yard	(40) 2 1/2" squares
CX5988 Toffee Tiny Tiles	1/6 yard	(40) 2 1/2" squares
K2214 (Brown) Krystal	3/8 yard	(5) 2 1/2" x W.O.F. – binding
CX5744 Teal Tribal Blanket	3/8 yard	(12) 2 1/2" x 6 1/2" (2) 6 1/2" squares
DC5786 Flame Diamondback	1/6 yard	(12) 2 1/2" x 6 1/2"
CX5999 Teal Diamond Prism	3/8 yard	(12) 2 1/2" x 6 1/2" (2) 6 1/2" squares
CX6048 Black Caravan	3/8 yard	(12) 2 1/2" x 6 1/2" (2) 4 1/2" squares
CX5999 Sunset Diamond Prism	1/6 yard	(12) 2 1/2" x 6 1/2"
DC5786 Turquoise Diamondback	1/6 yard	(12) 2 1/2" x 6 1/2"

*** One-way motif. Cut with pattern (motif) upright.**

Also needed: 45" x 60" backing, 45" x 60" batting, threads to match, scissors, straight pins, rotary cutter, acrylic ruler, and mat.

Disclaimers

This pattern is provided as a courtesy to quilt stores, catalogs, and quilters. Michael Miller Fabrics, LLC is not responsible for the accuracy of any kits packaged to accompany this pattern. Please direct any inquiries to the kit maker.

Yardage requirements for this pattern may allow for excess yardage to accommodate specific placement of motifs or to allow for any fussy-cutting to achieve the finished quilt design.

While every attempt has been made to give accurate measurements, yardage requirements, and construction directions; this does not allow personal variations in measuring, cutting, and or sewing. The enclosed directions were used in the construction of the original quilt.

Directions:

1. Sew a CX5999 Honey 1 ½" x 12 ½" piece to the top and bottom of the CX6000 piece. Sew a CX5999 Honey 1 ½" x 30 ½" piece to each side.
2. Sew a CX5744 Sunset 6 ½" W x 30 ½" H to each side of the center panel. Sew a CX5744 Sunset 6 ½" H x 26 ½" W piece to the top and bottom.
3. Sew a CX3584 1 ½" x 42 ½" piece to each side of the quilt. Sew a CX3584 1 ½" x 28 ½" to the top and bottom of the quilt.
4. For one picket – place one 2 ½" square on one half of one 2 ½" x 6 ½" piece. Sew across the 2 ½" square diagonally from the lower left corner to the upper right corner. Trim away excess. Press contrast corner to the top. Make (72) total – (12) each of CX5744 Teal, CX5999 Teal, DC5786 Turq with CX5988 Espresso – 2 ½" squares with point on right side. Reverse the sewing direction to the left side for (12) each. DC5786 Flame, CX6048 Black, CX5999 Sunset with CX5988 Toffee 2 ½" squares.
5. Sew pickets together into pairs (12) CX5744 Teal and DC5786 Flame, CX5999 Teal with CX6048, CX5999 Sunset with DC5786 Turq. Make (12) sets of each combination.
6. Sew (11) pairs together into (1) row. Make (2). Sew one to each side of the quilt. Sew (7) pairs together into (1) row. Make (2). Set aside.
7. For a cornerstone – sew one CX5988 Toffee and one CX5988 Espresso to each corner of a CX5744 Teal and CX5999 Teal 6 ½" block as in step #4. Cut (2) CX6048 4 ½" blocks in half diagonally. Sew across the 6 ½" square between the CX5988 corners as shown. Trim away excess. Sew one block to each end of each (7) picket row. Sew one row to the top and bottom of the quilt.
8. Layer backing, batting, and quilt top. Baste.
9. Quilt as desired.
10. Bind quilt using K2214 2 ½" strips pieced as needed for length.