

three's a party



Quilt designed by Emily Herrick



FABRIC REQUIREMENTS



CX5967 Forest
Happy Hooters
fat 1/4



CX5966 Purple
Fantasy Forest
fat 1/4



CX5976 Forest
Scandi Mushrooms
fat 1/4



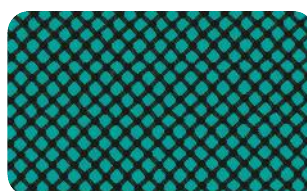
CX5977 Forest
Scandi Leaves
fat 1/4



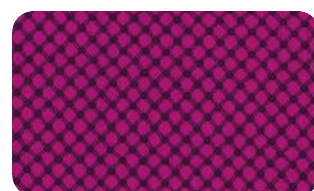
CX5978 Forest
Acornucopia
fat 1/4



CX5916 Cocoa
Polygon
fat 1/4



CX5911 Teal
Cora
fat 1/4



CX5911 Jewel
Cora
fat 1/4



CX5911 Apricot
Cora
fat 1/4



CX5911 Citron
Cora
fat 1/4



CX1492 Pumpkin
Ta Dot
fat 1/4



CX1492 Loden
Ta Dot
fat 1/4



SC5333 Tangerine
Cotton Couture
fat 1/4



SC5333 Mermaid
Cotton Couture
fat 1/4



SC5333 Jewel
Cotton Couture
fat 1/4



SC5333 Starfruit
Cotton Couture
fat 1/4



CX5974 Forest
Norwegian Woods Panel

"Three's a Party"

Quilt by Emily Herrick

Size: Approximately 48" W x 53" H Skill Level : Beginner

Materials

Fabric	Yardage	Cutting
CX5978 Forest	fat 1/8	(2) 5 3/4" squares; (1) 6 1/2" square
CX5911 Jewel	fat quarter	(1) 12" square
CX1492 Pumpkin	fat quarter	(1) 12" square; (1) 5 3/4" square
SC5333 Tangerine	fat quarter	(2) 2 2/3" x 6 1/2"; (2) 2 3/4" x 11" (1) 5 3/4" square;
SC5333 Jewel	fat 1/8	(2) 2 2/3" x 6 1/2"; (2) 2 3/4" x 11"
CX5976 Forest	fat quarter	(3) 5 3/4" squares; (1) 6 1/2" square
CX5967 Forest	fat 1/8	(3) 5 3/4" squares
CX5966 Purple	fat 1/8	(2) 5 3/4" squares; (1) 6 1/2" square
CX5911 Citron	fat 1/8	(2) 5 3/4" squares
CX1492 Loden	fat quarter	(1) 12" square; (1) 5 3/4" square
SC5333 Starfruit	fat quarter	(2) 2 2/3" x 6 1/2"; (2) 2 3/4" x 11" (1) 5 3/4" square;
CX1492 Azure	fat 1/8	(1) 5 3/4" squares
CX5977 Forest	fat 1/8	(2) 5 3/4" squares; (1) 6 1/2" square
CX5911 Teal	fat 1/8	(1) 12" square; (1) 5 3/4" square
SC5333 Mermaid	fat 1/8	(2) 2 2/3" x 6 1/2"; (2) 2 3/4" x 11"
CX5916 Cocoa	fat 1/8	(3) 5 3/4" squares
CX5911 Apricot	fat 1/8	(1) 5 3/4" squares
CX5974 Forest	Panel	11" x 21" each
SC5333 Black	2/3 yard	(5) 2 1/2" x WOF for Binding

Also Needed:

54" x 60" backing, 54 x 60" batting, threads to match, scissors, straight pins, rotary cutter, acrylic ruler, mat.

Disclaimers

This pattern is provided as a courtesy to quilt stores, catalogs, and quilters. Michael Miller Fabrics, LLC is not responsible for the accuracy of any kits packaged to accompany this pattern. Please direct any inquiries to the kit maker.

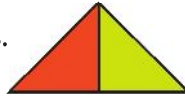
Yardage requirements for this pattern may allow for excess yardage to accommodate specific placement of motifs or to allow for any fussy-cutting to achieve the finished quilt design.

While every attempt has been made to give accurate measurements, yardage requirements, and construction directions; this does not allow personal variations in measuring, cutting, and or sewing. The enclosed directions were used in the construction of the original quilt.

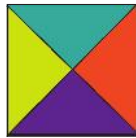
Directions

1. Cut each of the 12" squares in half diagonally twice to yield (4) triangles from each.

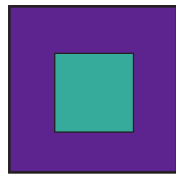
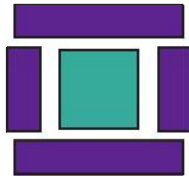
2. Mix and match the triangles and sew into pairs.
Make 8 pairs.



3. Sew the pairs together to make blocks.
Make 4 blocks.
Trim to 10 1/2" square.



4. Pair a 6 1/2" square of one fabric print with the 2 3/4" strips of another fabric print. Sew the shorter strips as shown below.
Make 4 blocks.



5. Sew together (8) pairs of 5 3/4" squares. Then sew 2 rows of (9) 5 3/4" squares each using the quilt picture as a reference.

6. Begin piecing quilt together in horizontal rows. Follow the quilt diagram and picture as needed. Sew rows together to complete the quilt top.

7. Layer backing, batting and quilt top. Baste.

8. Quilt as desired.

9. Join binding strips together as needed. Bind.

Quilt Assembly Diagram

