

Mark Hordyszynski BEADWORK

Beadwork Clutch Purse¹

featuring BEADWORK by Mark Hordyszynski for Michael Miller Fabrics
and Cotton Couture by Michael Miller Fabrics²

Evoking the luxurious beauty and craftsmanship of beaded purses and handbags of an Era gone by, Mark's trompe l'oeil BEADWORK collection will help you create timeless treasures in a fraction of the time.



TOOLS and MATERIALS required for each purse:

FAT QUARTERS WORK GREAT! - with sizeable scraps left over for other projects! Or 3/8 of a yard is needed of each of the Outer and Lining fabrics.

Outer Purse:

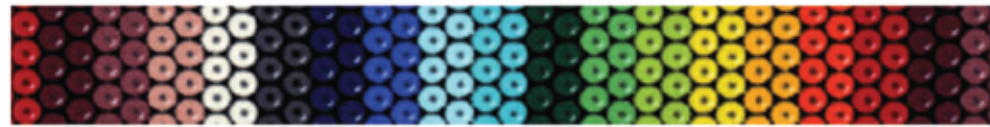
- ~ Cotton print fabric - one (1) piece cut to measure 11-1/2" long x 13-1/2" wide
*for this project it is not necessary to prewash the fabrics (I do not when using a fabric with a specialty finish such as Mirror Ball Dot) but if you do, prewash the fabric BEFORE cutting! Also remember you might need to purchase additional fabric if a particular design placement is required
- ~ Fusible interfacing - medium weight - one (1) piece cut to measure 11-3/8" long x 13-3/8" wide
- ~ Fusible fleece - one (1) piece cut to measure 11-1/2" long x 12-1/2" wide
*Fusiboo® by Fairfield Processing³ has proven to work well and was used in the making of these samples

Lining:

- ~ Lightweight cotton - one (1) piece cut to measure 11-1/2" long x 13-1/2" wide
*Cotton Couture by Michael Miller Fabrics² is a perfect weight for the lining and comes in over 100 colors!

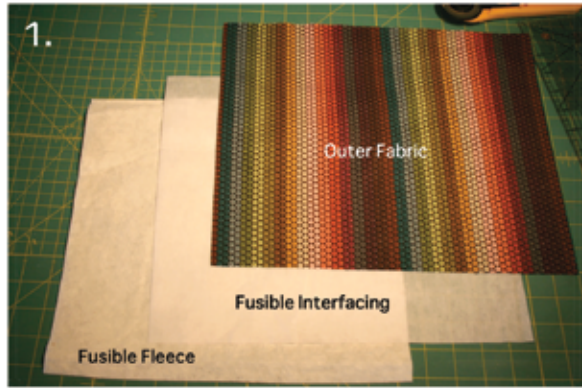
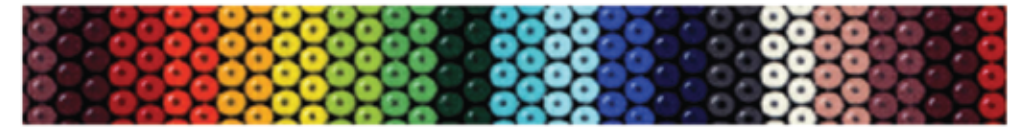
Rotary cutter, ruler, cutting mat, pins or paperclips, tape, super strength glue
Thread to match fabric, sewing machine and iron

One (1) 8" metal clutch purse frame *frames purchased at: www.etsy.com/shop/upstyle4

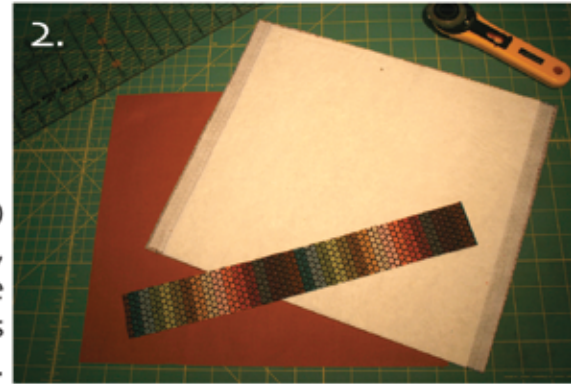


Mark Hordyszynski BEADWORK

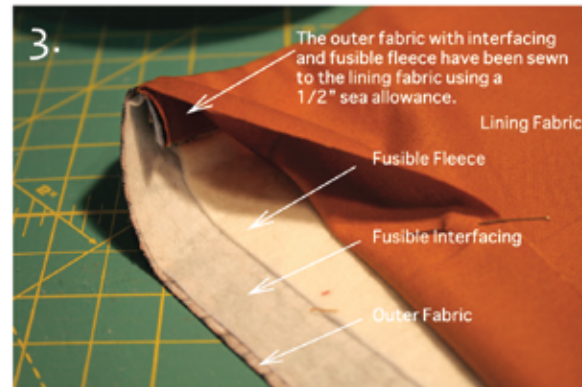
Beaded "Clutch Me" Purse Instructions



1. READ ALL INSTRUCTIONS CAREFULLY BEFORE STARTING
Lay the piece of cotton print fabric right side down on an ironing surface so the long (13-1/2") side is on the top and the bottom. Center the fusible interfacing on top of the wrong side of the print fabric. Following the manufacturer's directions fuse the interfacing to the wrong side of the fabric.



2. Center the fusible fleece on top of the interfaced (wrong) side of the fabric and following the manufacturer's directions, fuse the fleece to the interfacing. On your work surface, place the interfacing-and-fleece fused fabric so the right side is facing you, keeping the long sides on top and bottom.

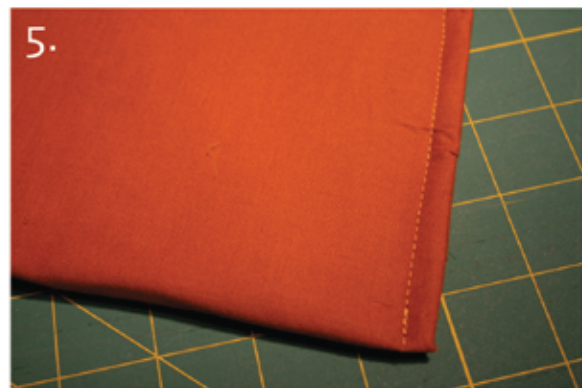


3. Matching raw edges, place the lining fabric on the fused fabric wrong sides together. Sew the two (2) pieces together along the top and bottom (long sides) using a 1/2" seam allowance. Use pins or paperclips to hold the pieces together.

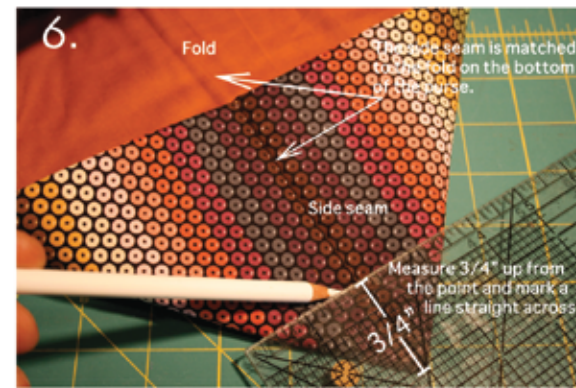
Turn right side out and press flat.



4. Fold the piece in half bottom to top, lining side together. Use pins or paperclips to hold the piece together. Sew along the raw edge (short side) using a 1/4" seam allowance on sides. Trim the seam allowance to 1/8". Clip the corner through the stitching forming a small hole.



5. Turn the purse outside in, pulling out the corners. Using a 1/4" seam allowance sew along the stitched (short) sides, encasing the previously stitched raw edge thus creating a French seam.



6. Turn the purse right side out. Match the side (French) seam to the fold on the center of the bottom of the purse. Measure 3/4" up from the point. Draw a straight line across point then stitch over this line, forming a gusset. Repeat for the other side. Trim the gusset to 1/8" seam allowance.

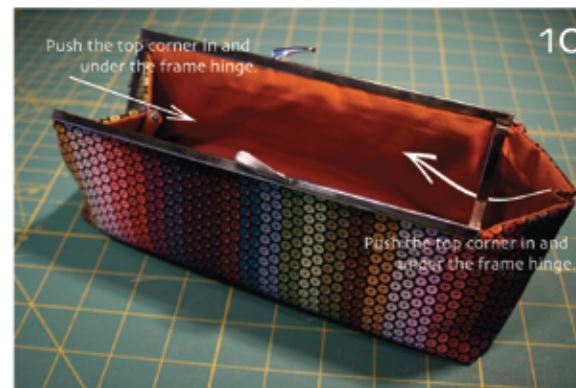


7. Turn the purse outside in. Using a 1/4" seam, sew along the gusset stitching, encasing the previously stitched raw edge. Turn the purse right side out. Iron the surfaces on both sides to remove any wrinkles, creases and/or puckering. DO NOT use too hot an iron as you do not want to "unglue" the fused interfacing from the fabric or have adhesive bleed through.



8. Find the center of both top (long) seams. Mark with a disappearing marker or similar. Center the frame on the seam edge and mark the ends with tape. Repeat for the other side.

9. Work one side at a time Apply glue into the channel of the frame starting 1/4" away from the ends as it is advisable to apply a thin, even bead of glue. After drying if the bond is not secure you can always remove the frame and reglue and reset the frame or add glue to the ends. Carefully insert the top seam into the glued channel. Secure in place with tape. Repeat for the other side. Allow the bag to dry thoroughly.



10. Remove the tape. Open the frame and lift the hinges up. Push the top corners in and under the frame hinge. Repeat. Snap the frame closed.

Mark Hordyszynski BEADWORK

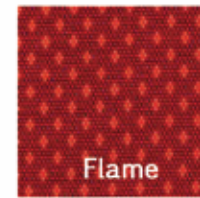
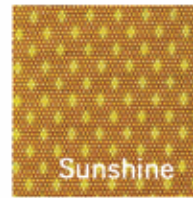


Multi



The richly saturated palette of Nature's paintbox - brightly hued, and vibrantly alive with animated color.

Diamondback DC5786

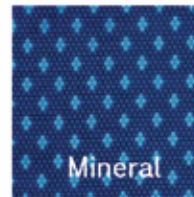


Jewel



Constellations abound as the gossamer kiss of velveteen darkness douses the passions of the day and everything reverberates with deep, cooling ultraviolet.

Diamondback DC5786



Earth



Radiating the warmth of sun-kissed colors at sunset and the scintillating quicksilver of a desert mirage.

Diamondback DC5786

