

Park Slope Triangles



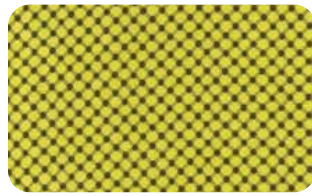


FABRIC REQUIREMENTS

Backing & Batting: 54" x 66"



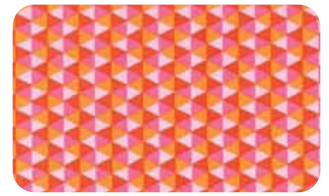
CX3137 Caribbean
Play Stripe
5/8 Yard



CX5911 Citron
Cora
Fat 1/4



CX5911 Orange
Cora
Fat 1/4



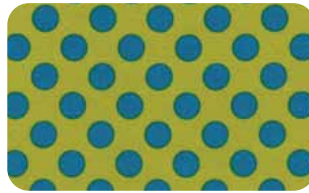
CX5916 Watermelon
Polygon
Fat 1/4



DC4703 Hollyberry
Tonal Kaleidoscope
Fat 1/4



CX1492 Berry
Ta Dot
Fat 1/4



CX1492 Caribe
Ta Dot
Fat 1/4



CX5518 Pink
Kiss Dot
Fat 1/4



CX5960 Black
Meadow Meet Up
Fat 1/4



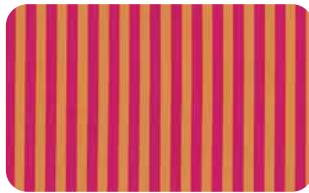
CX5960 White
Meadow Meet Up
Fat 1/4



CX5958 Black
Park Slope
Fat 1/4



CX5958 Teal
Park Slope
Fat 1/4



CX3584 Sorbet
Clown Stripe
Fat 1/4



CX5291 Brite
Diddly Dot
Fat 1/4



CX5959 Black
Brooklyn Debi
Fat 1/4



DC5702 Aqua
Moroccan Lattice
Fat 1/4



DC5702 Pink
Moroccan Lattice
Fat 1/4

"Park Slope Triangles"

Quilt by Marinda Stewart

Size: Approximately 49" W x 61 H" Skill Level : Intermediate

Materials

Fabric	Yardage	Cutting
CX3137 Caribbean Play Stripe	5/8 yard	(8) 2 1/2" x W.O.F. - Binding
CX5291 Brite Diddly Dot	Fat 1/4	(8) 60° triangles each color
CX5911 Citron Cora		6 7/8" x 6 7/8" *
CX5911 Orange Cora		
DC4703 Hollyberry Tonal Kaleidoscope		
CX1492 Berry Ta Dot		
CX1492 Caribe Ta Dot		
CX5916 Watermelon Polygon		
CX5518 Pink Kiss Do		
DC5702 Aqua Morrocan Lattice		
DC5702 Pink Morrocan Lattice		
CX3584 Sorbet Clown Stripe		
CX5960 Black Meadow Meet Up		
CX5960 White Meadow Meet Up		
CX5958 Black Park Slope		
CX5958 Teal Park Slope		
CX5959 Black Brooklyn Debi		

* Specialty ruler recommended - equilateral triangle

Also Needed:

55" x 65" backing, 55 x 65" batting, threads to match, scissors, straight pins, rotary cutter, acrylic ruler, fusible web, mat, and 60° ruler.

Disclaimers

This pattern is provided as a courtesy to quilt stores, catalogs, and quilters. Michael Miller Fabrics, LLC is not responsible for the accuracy of any kits packaged to accompany this pattern. Please direct any inquiries to the kit maker.

Yardage requirements for this pattern may allow for excess yardage to accommodate specific placement of motifs or to allow for any fussy-cutting to achieve the finished quilt design.

While every attempt has been made to give accurate measurements, yardage requirements, and construction directions; this does not allow personal variations in measuring, cutting, and or sewing. The enclosed directions were used in the construction of the original quilt.

NOTE: Binding this quilt is a challenge because of the points and inside angles. Another option is to trim the irregular edges into a simple rectangle to simplify the binding process.

1. Sew (14) assorted triangles two at a time into (7) diamond shapes. Join diamonds to each other using (6) more triangles to make the top row of the quilts. Make another set for the bottom edge of the quilt.
2. Sew (13) assorted triangles together to make a row. Alternate the direction of every other triangle across the row. Make (6) rows total.
3. Sew one row at a time to the bottom of the preceding row. Maintain the diamond shape pattern row to row. Refer to the photo. Complete the quilt top by sewing the bottom diamond unit to the bottom of the quilt.
4. Layer backing, batting, and quilt top. Baste.
5. Quilt as desired.
6. Bind quilt using CX3137 2 ½" strips pieced as needed for length. Points and inside angles will need to be mitered for a clean finish.

OPTION: Trim away irregular edges on all sides to make a rectangle. Bind the straight edges traditionally.