

Love



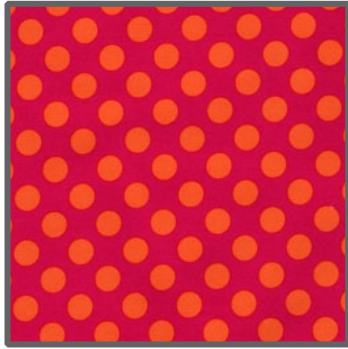
Size: 50" Square

Level: Confident Beginner

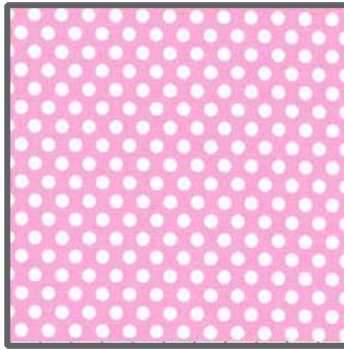
Quilt designed by Marinda Stewart



FABRIC REQUIREMENTS



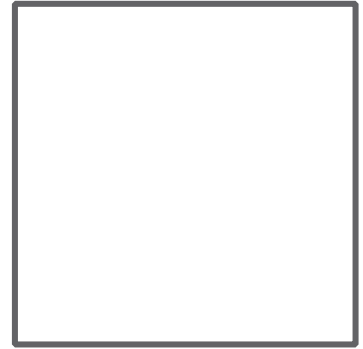
**CX1492 Bubblegum
Ta Dot
3/8 yard**



**CX5518 Pink
Kiss Dot
Fat 1/8**



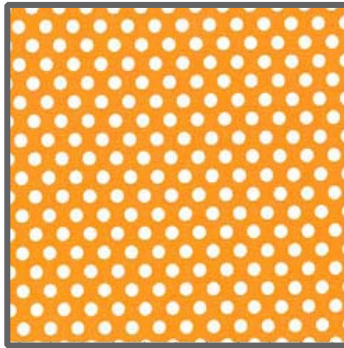
**CX5701 Multi
Love
3/4 yard**



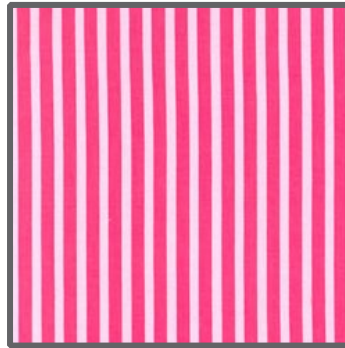
**SC5333 Bright White
Cotton Couture
1/2 yard**



**CX3137 Tangerine
Play Stripe
1/2 yard**



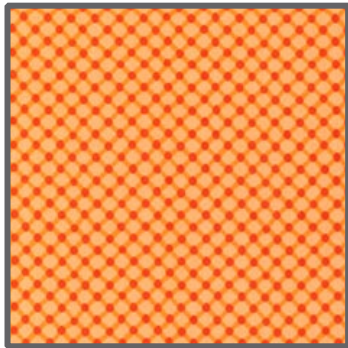
**CX5518 Orange
Kiss Dot
3/8 yard**



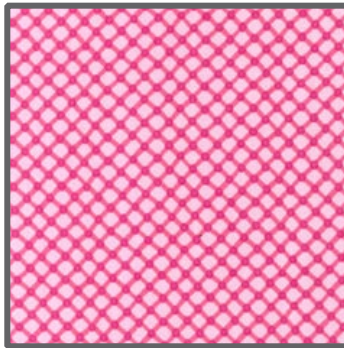
**CX3584 Girl
Clown Stripe
3/8 yard**



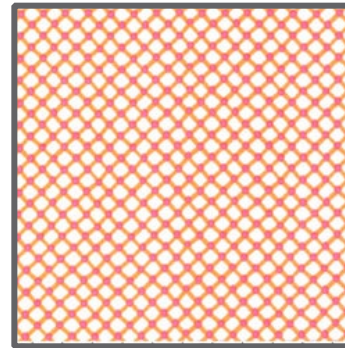
**CX5518 Kiwi
Kiss Dot
6" x 18" piece**



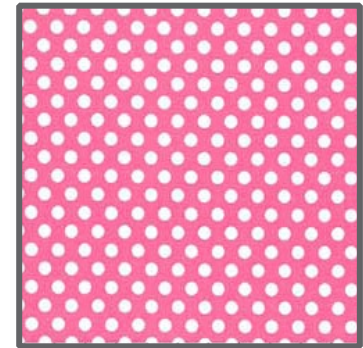
**CX5911 Orange
Cora
1/2 yard**



**CX5911 Pink
Cora
Fat 1/4**



**CX5911 Sorbet
Cora
8" Square**



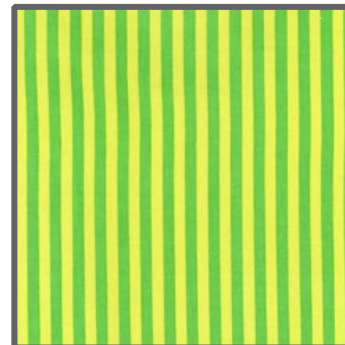
**CX5518 Blossom
Kiss Dot
8" x 12" piece**



**CX4831 Watermelon
Mini Harlequin
11" x 12"**



**CX2490 Orchid
Dumb Dot
3/8 yard**



**CX3584 Mint
Clown Stripe
3/8 yard**

Backing & Batting 55" x 55"

"Love"

Quilt by Marinda Stewart

Size: Approximately 50" square Skill Level : Confident Beginner

Materials

Fabric	Yardage	Cutting
CX1492 Bubblegum Ta Dot	3/8 yard	(2) 5 1/2" x 10 1/2" (20) 2 1/2" x 5 1/2" (4) hearts (see pattern)
CX5518 Pink Kiss Dot	Fat 1/8	(4) 3" squares (2) 5 1/2" squares
* CX5701 Multi Love	3/4 yard	(2) 6 1/2" H x 24 1/2" W (2) 6 1/2" W x 24 1/2" H (5) Fussy-cut hearts
SC5333 Bright White Cotton Couture	1/2 yard	(4) 5 1/2" squares (80) 2 1/2" squares
CX3137 Tangerine Play Stripe	1/2 yard	(40) 2 1/2" x 5 1/2"
CX5518 Orange Kiss Dot	3/8 yard	(2) 1 1/2" x 22 1/2" (2) 1 1/2" x 24 1/2" (2) 1 1/2" x 36 1/2" (2) 1 1/2" x 38 1/2"
CX3584 Girl Clown Stripe	3/8 yard	(2) 1 1/2" x 20 1/2" (2) 1 1/2" x 22 1/2" (2) 1 1/2" x 38 1/2" (2) 1 1/2" x 40 1/2"
CX5518 Kiwi Kiss Dot	6" x 18" piece	(2) 1" x 7 1/2" (4) hands (see pattern)
CX5911 Orange Cora	1/2 yard	(20) 2 1/2" x 5 1/2"
CX5911 Pink Cora	Fat 1/4	(3) 3 1/2" x 7 1/2" (1) 3 1/2" x 10 1/2"
CX5911 Sorbet Cora	8" Square	(1) 7 1/2" squares
CX5518 Blossom Kiss Dot	8" x 12" piece	(1) 3 1/2" x 10 1/2" (1) 3 1/2" x 7 1/2"
CX4831 Watermelon Mini Harlequin	11" x 12"	(2) 5 1/2" x 10 1/2"
CX2490 Orchid Dumb Dot	3/8 yard	(4) 5 1/2" square (4) 6 1/2" square
CX3584 Mint Clown Stripe	3/8 yard	(5) 2 1/2" x W.O.F. - binding

* One Way Print

Also Needed:

55" x 55" backing, 55" x 55" batting, threads to match, scissors, straight pins, acrylic ruler, rotary cutter, mat, and fusible web. OPTIONAL: iron-on tear-away stabilizer

Disclaimers

This pattern is provided as a courtesy to quilt stores, catalogs, and quilters. Michael Miller Fabrics, LLC is not responsible for the accuracy of any kits packaged to accompany this pattern. Please direct any inquiries to the kit maker.

Yardage requirements for this pattern may allow for excess yardage to accommodate specific placement of motifs or to allow for any fussy-cutting to achieve the finished quilt design.

While every attempt has been made to give accurate measurements, yardage requirements, and construction directions; this does not allow personal variations in measuring, cutting, and or sewing. The enclosed directions were used in the construction of the original quilt.

Directions

1. For the "L" - sew one CX5518 blossom 3 1/2" x 7 1/2" piece to the bottom of the CX5911 Sorbet - 7 1/2" square. Sew the CX5518 Blossom 3 1/2" x 10 1/2" piece to the left side of the pieced unit. Set aside.
2. For the "O" - place one CX5518 Pink - 3" square right sides together on the upper left corner of one CX1492 5 1/2" x 10 1/2" piece. Draw a diagonal line from the lower left corner to the upper right corner of the 3" square. Stitch along the line. Trim away the excess from the back. Repeat for the upper right corner. Using the same process use the CX5518 Pink - 5 1/2" square on the bottom edge of the CX1492 piece as shown. Repeat the process for the remaining CX1492 5 1/2" x 10 1/2" piece. Join two half hearts together as shown. Following manufacturer's direction iron one fussy-cut heart to the paper side of the fusible web. Cut out. Remove the paper backing. Fuse to the center of the heart as shown. Machine satin stitch the raw edges to finish. Sew completed block to the right side of the "L" block. Set aside.
3. For the "V" - using the same process as step #2 sew one CX2490 5 1/2" square to the top of one CX4831 5 1/2" x 10 1/2" piece. Sew one CX2490 5 1/2" square to the bottom as shown. Repeat for the other side of the "V". Sew the two halves together as shown. Set aside.
4. For the "E" - Sew one CX5518 Kiwi - 1" x 7 1/2" piece between each of the three CX5911 Pink - 3 1/2" x 7 1/2" pieces as shown. Sew one CX5911 - Pink 3 1/2" x 10 1/2" piece to the left side of the unit. Sew the completed "E" to the right side of the "V" block.
5. Sew the "V/E" unit to the bottom of the "L/O" unit to make a 20 1/2" square.
6. Sew one CX3584 Girl 1 1/2" x 20 1/2" piece to the top and bottom of the unit. Sew one CX3684 Girl - 1 1/2" x 22 1/2" piece to each side.
7. Sew one CX5518 Orange 1 1/2" x 22 1/2" piece to the top and bottom of the unit. Sew one CX5518 Orange 1 1/2" x 24 1/2" piece to each side.
8. Sew one CX5701 6 1/2" H x 24 1/2" W to the top and bottom of the quilt.
9. For the heart - in - hand cornerstone blocks - trace four hands and four hearts on the paper side of the fusible web. Rough cut out. Fuse the hands to CX5518 Kiwi and the hearts to CX1492. Cut out along the pattern lines. Remove paper backing. Fuse a heart to the center of each hand. Fuse one hand to the center of one CX2490 6 1/2" square. Machine satin stitch all raw edges to finish. (Optional - back each block with iron-on tear away stabilizer before stitching. This improves the stitch quality and helps eliminate warping and distortion. Remove all stabilizer after stitching.)
10. Sew one hand block to the top and bottom of each CX5701 6 1/2" W x 24 1/2" H piece. Keep motifs upright. Make two. Sew one each to each side of the quilt.
11. Sew one CX5518 Orange 1 1/2" x 36 1/2" to the top and bottom of the quilt. Sew on CX5518 Orange 1 1/2" x 38 1/2" piece to each side.
12. Sew one CX3584 Girl 1 1/2" x 38 1/2" piece to the top and bottom of the quilt. Sew one CX3584 Girl 1 1/2" x 40 1/2" piece to each side. Set aside.

13. For the picket units - using the method in Step #2 sew one SC5333 2 1/2" square to the top of one CX3137 2 1/2" x 5 1/2" piece. Sew from the lower left corner to the upper right. Make (40) total. Repeat using the (20) CX5911 Orange and the (20) CX1492 2 1/2" x 5 1/2" pieces, sewing from the lower right corner to the upper left. Sew together one left unit with one right unit. Make (40) pairs. Sew together four sets of (10) pairs alternating the CX5911 Orange and the CX1492 pairs as shown. Sew one 10 pair unit to the top and bottom of the quilt.
14. For the heart cornerstone blocks - fuse the remaining four fussy-cut hearts to the lower corners of each SC5333 5 1/2" square as shown. Machine satin stitch the raw edges. Sew one block to the top and bottom of each remaining 10-pair strip. Sew one strip to each side fo the quilt as shown.
15. Layer backing, batting, and quilt top. Baste.
16. Quilt as desired.
17. Bind quilt using CX3584 - Mint 2 1/2" strips pieced together as needed for length.

"Love" Quilt PATTERNS



cut (4) each

*Note: hand image
will be reversed.

*Marinda © 2012