

Happy Tones

Date: Nov.13.12



Level: Confident Beginner | Size: 50" W x 70" H | Quilt designed by Marinda Stewart

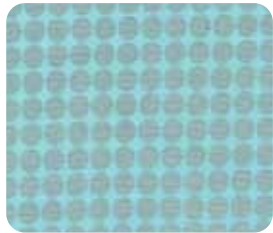




FABRIC REQUIREMENTS



CX4956 Citrus That's All Stripe
1/2 yard



DM2999 Luna Mirror Ball Dot
4" x 8" piece



DM2999 Aloe Mirror Ball Dot
8" x 12" piece



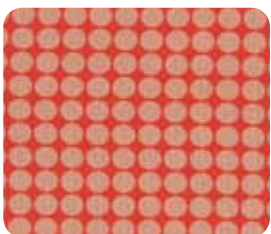
DM2999 Limeade Mirror Ball Dot
14" x 18" piece



DM2999 Citron Mirror Ball Dot
12" x 18" piece



DM2999 Sunshine Mirror Ball Dot
8" x 10" piece



DM2999 Clementine Mirror Ball Dot
12" square



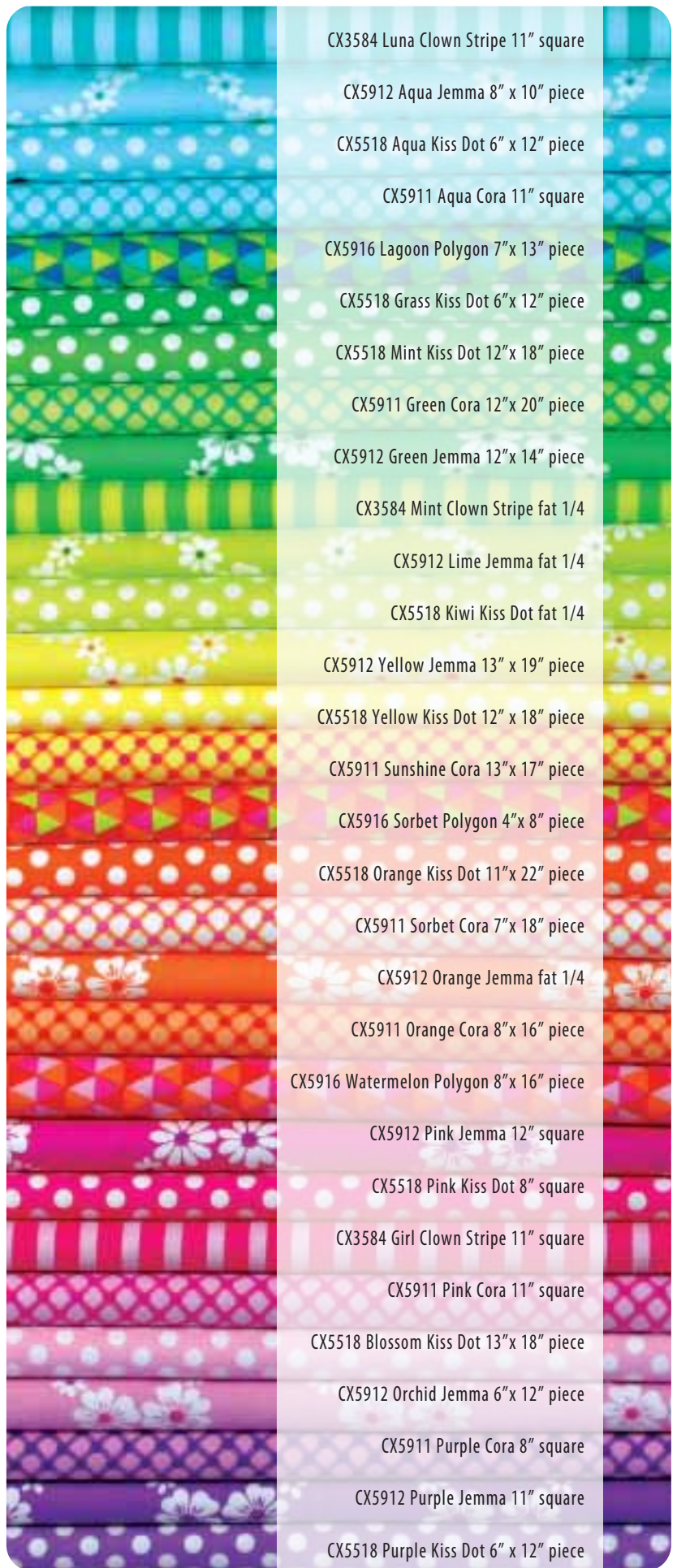
DM2999 Sunkist Mirror Ball Dot
4" x 8" piece



DM2999 Confection Mirror Ball Dot
6" x 12" piece



DM2999 Princess Mirror Ball Dot
7" x 13" piece



CX3584 Luna Clown Stripe 11" square

CX5912 Aqua Jemma 8" x 10" piece

CX5518 Aqua Kiss Dot 6" x 12" piece

CX5911 Aqua Cora 11" square

CX5916 Lagoon Polygon 7" x 13" piece

CX5518 Grass Kiss Dot 6" x 12" piece

CX5518 Mint Kiss Dot 12" x 18" piece

CX5911 Green Cora 12" x 20" piece

CX5912 Green Jemma 12" x 14" piece

CX3584 Mint Clown Stripe fat 1/4

CX5912 Lime Jemma fat 1/4

CX5518 Kiwi Kiss Dot fat 1/4

CX5912 Yellow Jemma 13" x 19" piece

CX5518 Yellow Kiss Dot 12" x 18" piece

CX5911 Sunshine Cora 13" x 17" piece

CX5916 Sorbet Polygon 4" x 8" piece

CX5518 Orange Kiss Dot 11" x 22" piece

CX5911 Sorbet Cora 7" x 18" piece

CX5912 Orange Jemma fat 1/4

CX5911 Orange Cora 8" x 16" piece

CX5916 Watermelon Polygon 8" x 16" piece

CX5912 Pink Jemma 12" square

CX5518 Pink Kiss Dot 8" square

CX3584 Girl Clown Stripe 11" square

CX5911 Pink Cora 11" square

CX5518 Blossom Kiss Dot 13" x 18" piece

CX5912 Orchid Jemma 6" x 12" piece

CX5911 Purple Cora 8" square

CX5912 Purple Jemma 11" square

CX5518 Purple Kiss Dot 6" x 12" piece

Backing & Batting: 55" x 75"

"Happy Tones"

Quilt by Marinda Stewart

Size: Approximately 50" W x 70" H Skill Level: Confident Beginner

Materials

Fabric	Yardage	Cutting
CX5912 Aqua Jemma	8" x 10" piece	(1) 5 1/2" square (2) 3 1/2" square
CX5518 Aqua Kiss Dot	6" x 12" piece	(2) 5 1/2" squares
DM2999 Luna Mirror Ball Dot	4" x 8" piece	(2) 3 1/2" squares
CX3584 Luna Clown Stripe	11" square	(1) 10 1/2" square
CX5912 Green Jemma	12" x 14" piece	(1) 5 1/2" square (2) 6" squares (2) 3 1/2" squares
CX5911 Green Cora	12" x 20" piece	(3) 5 1/2" squares (2) 6" squares (2) 3 1/2" squares
CX5518 Mint Kiss Dot	12" x 18" piece	(3) 5 1/2" squares (2) 6" squares
CX3584 Mint Clown Stripe	Fat 1/4	(8) 3 1/2" squares (1) 10 1/2" squares
CX5912 Lime Jemma	Fat 1/4	(4) 6" squares (4) 5 1/2" squares (2) 3 1/2" squares
DM2999 Aloe Mirror Ball Dot	8" x 12" piece	(6) 3 1/2" squares
DM2999 Citron Mirror Ball Dot	12" x 18" piece	(1) 5 1/2" x 10 1/2" (2) 6" squares (1) 5 1/2" squares
DM2999 Limeade Mirror Ball Dot	14" x 18" piece	(4) 6" squares (1) 5 1/2" squares
CX5911 Aqua Cora	11" square	(1) 10 1/2" squares
CX5916 Lagoon Polygon	7" x 13" piece	(2) 6" squares
CX5518 Kiwi Kiss Dot	Fat 1/4	(1) 10 1/2" square (1) 5 1/2" x 10 1/2" (2) 6" square (4) 3 1/2" square
CX5911 Sunshine Cora	13" x 17" piece	(4) 6" square (2) 3 1/2" square
DM2999 Sunshine Mirror Ball Dot	8" x 10" piece	(1) 5 1/2" square (2) 3 1/2" square
CX5518 Yellow Kiss Dot	12" x 18" piece	(2) 5 1/2' x 10 1/2" (2) 5 1/2" square
CX5518 Grass Kiss Dot	6" x 12" piece	(2) 5 1/2" squares
CX5912 Yellow Jemma	13" x 19" piece	(1) 5 1/2" square (4) 6" squares

Fabric	Yardage	Cutting
CX5912 Orange Jemma	Fat 1/4	(1) 10 1/2" squares (2) 6" squares (1) 5 1/2" square
CX5911 Sorbet Cora	7" x 18" piece	(1) 5 1/2" square (2) 6" squares
CX5518 Orange Kiss Dot	11" x 22" piece	(1) 10 1/2' square (1) 5 1/2" x 10 1/2" (1) 5 1/2" square
CX5912 Pink Jemma	12" square	(4) 5 1/2" squares
CX5518 Blossom Kiss Dot	13" x 18" piece	(4) 5 1/2" squares (2) 6" squares
DM2999 Clementine Mirror Ball Dot	12" square	(4) 5 1/2" squares
CX5911 Orange Cora	8" x 16" piece	(8) 3 1/2" squares
CX5916 Watermelon Polygon	8" x 16" piece	(8) 3 1/2" squares
CX5911 Pink Cora	11" square	(1) 10 1/2" square
CX5916 Sorbet Polygon	4" x 8" piece	(2) 3 1/2" squares
DM2999 Sunkist Mirror Ball Dot	4" x 8" piece	(2) 3 1/2" squares
DM2999 Princess Mirror Ball Dot	7" x 13" piece	(2) 6" squares
CX5912 Orchid Jemma	6" x 12" piece	(2) 5 1/2" squares
DM2999 Confection Mirror Ball Dot	6" x 12" piece	(2) 5 1/2" squares
CX5518 Purple Kiss Dot	6" x 12" piece	(2) 5 1/2" squares
CX5518 Pink Kiss Dot	8" square	(4) 3 1/2" squares
CX5911 Purple Cora	8" square	(4) 3 1/2" squares
CX3584 Girl Clown Stripe	11" square	(1) 10 1/2" square
CX5912 Purple Jemma	11" square	(1) 10 1/2" square
CX4956 Citrus That's All Stripe	1/2 yard	(6) 2 1/2" x W.O.F. - binding
Also Needed: 55" x 75" backing, 55" x 75" batting, threads to match, scissors, straight pins, rotary cutter, acrylic ruler, and mat.		

Disclaimers

This pattern is provided as a courtesy to quilt stores, catalogs, and quilters. Michael Miller Fabrics, LLC is not responsible for the accuracy of any kits packaged to accompany this pattern. Please direct any inquiries to the kit maker.

Yardage requirements for this pattern may allow for excess yardage to accommodate specific placement of motifs or to allow for any fussy-cutting to achieve the finished quilt design.

While every attempt has been made to give accurate measurements, yardage requirements, and construction directions; this does not allow personal variations in measuring, cutting, and or sewing. The enclosed directions were used in the construction of the original quilt.

Directions

This quilt is easy to make. Each block is made of different colors and prints. It is important to pay attention to the block fabrics and placement to maintain the rainbow effect.

To easily keep track of all the fabrics, this quilt will be assembled by row – one block at a time. Almost every block throughout the quilt is a different combination of fabric. Each block is labeled with the row and place in the row ("1-A, 2-C).

1. There are two sizes of pinwheels in this quilt 5" and 10". The process for making them is the same. Here are the steps. Place (2) same size squares right sides together (3 1/2" / 6"). Draw a diagonal line from corner to opposite corner. Stitch 1/4" on each side of the line. Cut apart along the line. Press open. Trim each to an accurate measurement (3" square and 5 1/2" square). Sew together four right square triangles as shown to make one pinwheel block 5 1/2" or 10 1/2" square.
2. Row #1 – Block "A" – make one 5 1/2" pinwheel block using CX5912 Aqua and DM2999 Luna 3 1/2" squares. Sew together one CX5912 Aqua 5 1/2" square and one CX5518 Aqua. Sew together (1) CX5518 Aqua 5 1/2" square and pinwheel block. Sew two rows together to make (1) 10 1/2" 4-patch block.
Block "1-B" – Sew CX3584 Luna 10 1/2" square to right side of Block "1-A". Stripes run up and down. Block "1-C" make one 10 1/2" pinwheel using CX5912 Green and CX5911 Green 6" squares. Sew to the right side of Block "1-B". Block "1-D" – make (3) 5 1/2" pinwheels using CX3584 Mint and DM2999 Aloe 3 1/2" squares. Set two aside for later use. Sew together (1) CX5518 Mint and (1) CX5911 Green 5 1/2" squares. Sew (1) CX5912 Lime 5 1/2" square to the pinwheel block. Join the two rows together into a 10 1/2" square. Sew to Block "1-C". For Block "1-E" – make (4) right square triangles from DM2999 Limeade and CX5912 Lime 6" squares. Sew two together to make two pairs. Set one pair aside for later use. Sew DM2999 Citron 5 1/2" x 10 1/2" piece to the top of one pair of triangles (1/ 2 pinwheel unit) to make the final block in Row #1. Sew to Block "1-D". Set Row #1 aside.
3. Row #2 - Block "2-B" - make a 10 1/2" pinwheel using CX5518 Mint and CX5916 Lagoon 6" squares. Sew to the right side of Block "2-A" CX5911 Aqua 10 1/2" square. Block "2-C" - sew together one CX5912 Lime and CX5518 Mint 5 1/2" squares. Sew one CX5911 Green 5 1/2" square to the left side of one 5 1/2" pinwheel left over from step #2 (CX3584 Mint and DM2999 Aloe combo). Sew two rows together. Sew completed 10 1/2" square to Block "2-B". Sew (1) CX5518 Kiwi 10 1/2" square (Block "2-D") to Block "2-C". For Block "2-E" from CX5911 Sunshine and DM2999 Sunshine make one 5 1/2" pinwheel. Sew one CX5518 Yellow 5 1/2" square to the right side of the 5 1/2" pinwheel. Sew this unit to the bottom of the remaining row of 5 1/2" right square triangles (1/2 pinwheel unit). Sew Block "2-E" to Block "2-D". This completes the pinwheel started in Row #1. Sew completed Row #2 to the bottom of Row #1. Set aside.
4. Row #3 - Block "3-A" - From CX5912 Green and CX5911 Green make a 5 1/2" pinwheel block. Sew (1) CX5518 Grass and (1) CX5912 Green 5 1/2" squares together. Sew one CX5518 Grass 5 1/2" square to the right side of the pinwheel unit. Sew the two units together to make a 10 1/2" square. For Block "3-B" sew together one CX5912 Lime 5 1/2" square to the left side of the last 5 1/2" pinwheel from step #2 (CX3584 Mint and DM2999 Aloe combo) Sew one CX5911 Green and (1) CX5518 Mint 5 1/2" squares. Join the two rows.

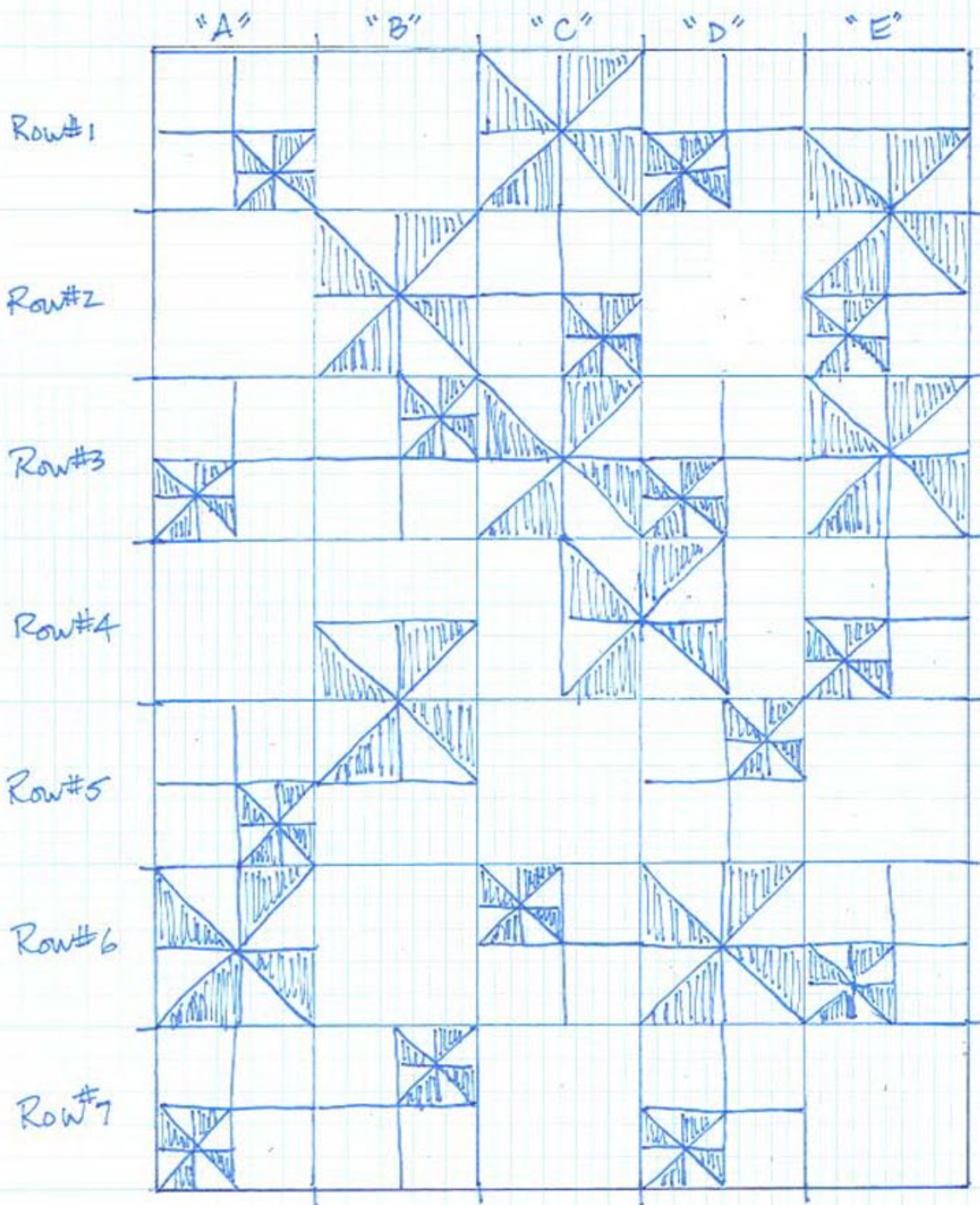
Sew completed Block "3-B" to the right side of the Block "3-A". Block "3-C" - Make (2) 10 ½" pinwheels using CX5518 Kiwi and DM2999 Citron. Set one aside. Sew to Block "3-B". For Block "3-D" from CX5518 Kiwi and CX5912 Lime 3 ½" squares make a 5 ½" pinwheel. Sew together (1) CX5518 Yellow and CX5912 Yellow 5 ½" square. Sew one DM2999 Sunshine 5 ½" square to the right side of the pinwheel. Join the two rows. Sew Block "3-D" to Block "3-C". For Block "3-E" - Make one 10 ½" pinwheel using CX5912 Orange and CX5911 Sorbet. Sew to Block "3-D". Sew completed row to the bottom of Row#2.

5. Row #4 - Block "4-B" - From CX5912 Lime and DM2999 Limeade 6" squares make (4) right square triangles. Sew into two sets ((2) Half 10 ½" pinwheel units). Set one pair of triangles aside. Sew one CX5518 Kiwi 5 ½" x 10 ½" piece to the top of one pair of 5 ½" right square triangles. Sew Block "4-B" to the right side of CX3584 Mint 10 ½" square (Block "4-A"). For Block "4-C" - From CX5912 Yellow and CX5911 Sunshine 6" squares, make (4) right square triangles. Sew into (2) Half pinwheel units. Sew one CX5518 5 ½" x 10 ½" piece to the left side of one Half pinwheel unit. Sew Block "4-C" to Block "4-B". Sew one CX5518 Orange 5 ½" x 10 ½" piece to the right side of the remaining Half pinwheel unit. Sew completed Block "4-D" to Block "4-C" maintaining pinwheel pattern. For Block "4-E" - From CX5911 Orange and CX5916 Watermelon 3 ½" squares make (4) 5 ½" pinwheels. Set three aside. Sew one CX5912 Pink and CX5518 Blossom 5 ½" squares. Sew one DM2999 Clementine 5 ½" square to the right side of one 5 ½" pinwheel. Sew two rows together to make Block "4-E". Sew to Block "4-D". Sew completed Row #4 to the bottom of Row #3. Set aside.
6. Row #5 - Block "5-A" - From CX5518 Lime and CX3584 Mint 3 ½" squares make (1) 5 ½" pinwheel. Sew together one CX5912 Lime and DM2999 Citron 5 ½" squares. Sew one DM2999 Limeade 5 ½" square to the left side of the pinwheel. Join the two rows. For Block "5-B" sew one CX5518 Yellow 5 ½" x 10 ½" piece to the bottom of the remaining Half pinwheel unit (CX5912 Lime and DM2999 Limeade combo). Sew to the right side of Block "5-A". Sew (1) CX5912 Orange 10 ½" square (Block "5-C") to the right side of Block "5-B". For Block 5-D sew one CX5518 Blossom 5 ½" square to the left side of one 5 ½" pinwheel from Row #4. Sew one DM2999 Clementine and one CX5912 Pink 5 ½" squares together. Join (2) rows. Sew to Block "5-C". Sew one CX5911 Pink 10 ½" square (Block"5-E") to Block "5-D". Add row to the quilt.
7. Row #6 - Block "6-A" and "6-B" - Sew one CX5518 Orange 10 ½" square to the right side of the remaining 10 ½" pinwheel from Row #4 (CX5912 Yellow and CX5911 Sunshine combo). Sew one CX5912 Pink 5 ½" square to the right side of one 5 ½" pinwheel from Row #4 (CX5911 Orange and CX5916 Watermelon combo). Sew one DM2999 Clementine and one CX5518 Blossom 5 ½" squares together. Join two rows. Sew Block "6-C" to "6-B". For Block "6-D" from CX5518 Blossom and DM2999 Princess 6" squares make a 10 ½" pinwheel. Sew to Block "6-C". For Block "6-E" - From CX5518 Pink and CX5911 Purple 3 ½" squares. Make two 5 ½" pinwheels. Set one aside. Sew one CX5912 Orchid and DM2999 Princess 5 ½" squares together. Sew one CX5518 Purple 5 ½" square to the right side of one 5 ½" pinwheel. Sew the two rows together. Sew to Block "6-D". Sew finished row to the bottom of the quilt.
8. Row #7 - For Block "7-A" - From CX5916 Sorbet and DM2999 Sunkist 3 ½" squares make a 5 ½" pinwheel. Sew one CX5518 Orange and one CX5912 Orange 5 ½" together. Sew one CX5911 Sorbet 5 ½" square to the right side of the pinwheel. Join the two rows together. Set aside. For Block "7-B" - Sew one DM2999 Clementine 5 ½" square to the left side of the remaining 5 ½" pinwheel from Row #4 (CX5911 Orange and CX5916 Watermelon combo). Sew together one CX5518 Blossom and one CX5912 Pink 5 ½" squares. Join the two rows. Sew Block "7-B" to the right side of Block "7-A". Sew one CX3584 Girl 10 ½" square (Block "7-C") to Block "7-B". Block "7-D" Sew one DM2999 Princess and one CX5912 Orchid 5 ½" squares together. Sew one CX5518 Purple 5 ½" square to the right side of the remaining 5 ½" pinwheel (CX5911 Purple and CX5518 Pink combo). Join two rows together. Sew to Block "7-C". Sew one CX5912 Purple 10 ½" square (Block"7-E") to Block "7-D" to complete the row. Sew Row #7 to the bottom of the quilt to complete the top.
9. Layer backing, batting, and quilt top. Baste.
10. Quilt as desired.
11. Bind quilt using CX4956 2 ½" strips pieced as needed with the stripe for length.

Whew! It's finished!!

Refer to the "Placement Guide" for block positions and row compositions

"Happy Tones" Placement Guide



- (35) 10" blocks =
- (9) 10" solid fabric
 - (6) 10" pinwheel
 - (6) 1/2 10" pinwheel
 - (14) 10" four-patch w/ (1) 5" pinwheel
 - (1) 1/2 10" four-patch w/ (1) 5" pinwheel
 - (15) 5" pinwheels
 - (43) 5" solid fabric