

# Stitch Floral



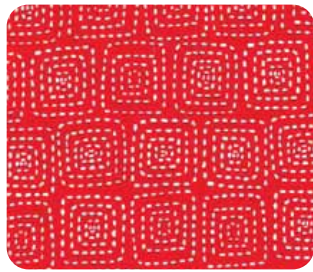
Level: Beginner | Size: 42.5" W x 56.5" H | Quilt designed by Marinda Stewart







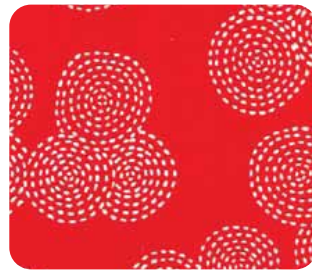
# FABRIC REQUIREMENTS



CX5944 Red Stitch Square  
3/8 yard



CX5944 Orange Stitch Square  
1/4 yard



CX5946 Red Stitch Circle  
3/8 yard



CX5946 Orange Stitch Circle  
3/8 yard



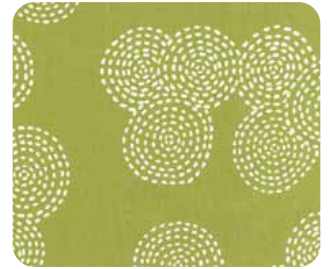
CX5944 Mustard Stitch Square  
1/4 yard



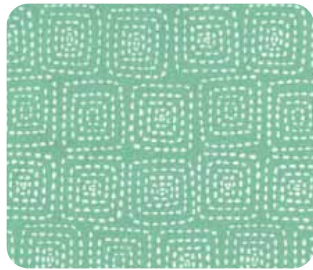
CX5944 Olive Stitch Square  
1/6 yard



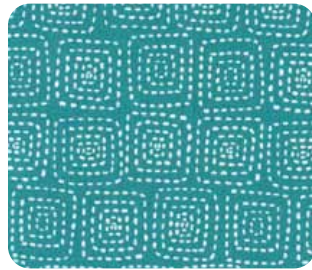
CX5946 Mustard Stitch Circle  
1/4 yard



CX5946 Olive Stitch Circle  
1/4 yard



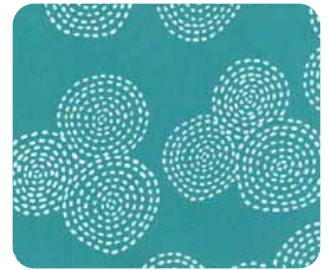
CX5944 Mint Stitch Square  
1/4 yard



CX5944 Teal Stitch Square  
3/8 yard



CX5946 Mint Stitch Circle  
1/4 yard



CX5946 Teal Stitch Circle  
3/8 yard



CX5947 Navy Stitch Floral  
5/8 yard



CX3137 Navy Play Stripe  
3/8 yard

Backing & Batting: 48" x 62"

## "Stitch Floral"

Quilt by Marinda Stewart

Size: Approximately 42 1/2" x 56 1/2" Skill Level : Beginner

### Materials

Fabric	Yardage	Cutting
CX5947 Navy Stitch Floral	5/8 yard	Fussy cut (12) 5 1/2" squares *
CX5944 Olive Stitch Square	1/6 yard	(12) 2" x 5 1/2"
CX5946 Olive Stitch Circle	1/4 yard	(12) 2" x 7"
CX5946 Mustard Stitch Circle	1/4 yard	(12) 2" x 7"
CX5944 Mustard Stitch Square	1/4 yard	(12) 2" x 8 1/2"
CX5944 Mint Stitch Square	1/4 yard	(12) 2" x 10"
CX5946 Mint Stitch Circle	1/4 yard	(12) 2" x 8 1/2"
CX5944 Orange Stitch Square	1/4 yard	(12) 2" x 10"
CX5946 Orange Stitch Circle	3/8 yard	(12) 2" x 11 1/2"
CX5944 Teal Stitch Square	3/8 yard	(12) 2" x 11 1/2"
CX5946 Teal Stitch Circle	3/8 yard	(12) 2" x 13"
CX5946 Red Stitch Circle	3/8 yard	(12) 2" x 13"
CX5944 Red Stitch Square	3/8 yard	(12) 2" x 14 1/2"
CX3137 Navy Play Stripe	3/8 yard	(5) 2 1/2" x W.O.F. - binding

\* Center on motif

#### Also Needed:

48" x 62" backing, 48" x 62" batting, threads to match, scissors, straight pins, acrylic ruler, rotary cutter, and mat.

## Disclaimers

This pattern is provided as a courtesy to quilt stores, catalogs, and quilters. Michael Miller Fabrics, LLC is not responsible for the accuracy of any kits packaged to accompany this pattern. Please direct any inquiries to the kit maker.

Yardage requirements for this pattern may allow for excess yardage to accommodate specific placement of motifs or to allow for any fussy-cutting to achieve the finished quilt design.

While every attempt has been made to give accurate measurements, yardage requirements, and construction directions; this does not allow personal variations in measuring, cutting, and or sewing. The enclosed directions were used in the construction of the original quilt.

## Directions

1. For (1) 14 ½" square block - sew one CX5944 Olive 2" x 5 ½" piece to the top of one CX5947 5 ½" square. Sew one CX5946 Olive 2" x 7" piece to the right side. Sew one CX5946 Mustard 2" x 7" piece to the bottom. Sew one CX5944 Mustard 2" x 8 ½" piece to the left side.

Round #2 - Sew one CX5946 Mint 2" x 8 ½" piece to the top of the block. Sew one CX5944 Mint 2" x 10" piece to the right side. Sew one CX5944 Orange 2" x 10" piece to the bottom. Sew one CX5946 Orange 2" x 11 ½" piece to the left side.

Round #3 - Sew one CX5944 Teal 2" x 11 ½" piece to the top. Sew one CX5944 Teal 2" x 13" piece to the right side. Sew one CX5946 Red 2" x 13" piece to the bottom. Sew one CX5949 Red 2" x 14 ½" piece to the left side. Make (12).

2. Sew together (3) blocks to make (1) row. Match the colors from block to block as shown. Make (4) rows total.
3. Sew rows together to make diagonal pattern as shown or as desired.
4. Layer backing, batting, and quilt top. Baste.
5. Quilt as desired.
6. Bind quilt using CX3137 2 ½" strips pieced as needed for length.